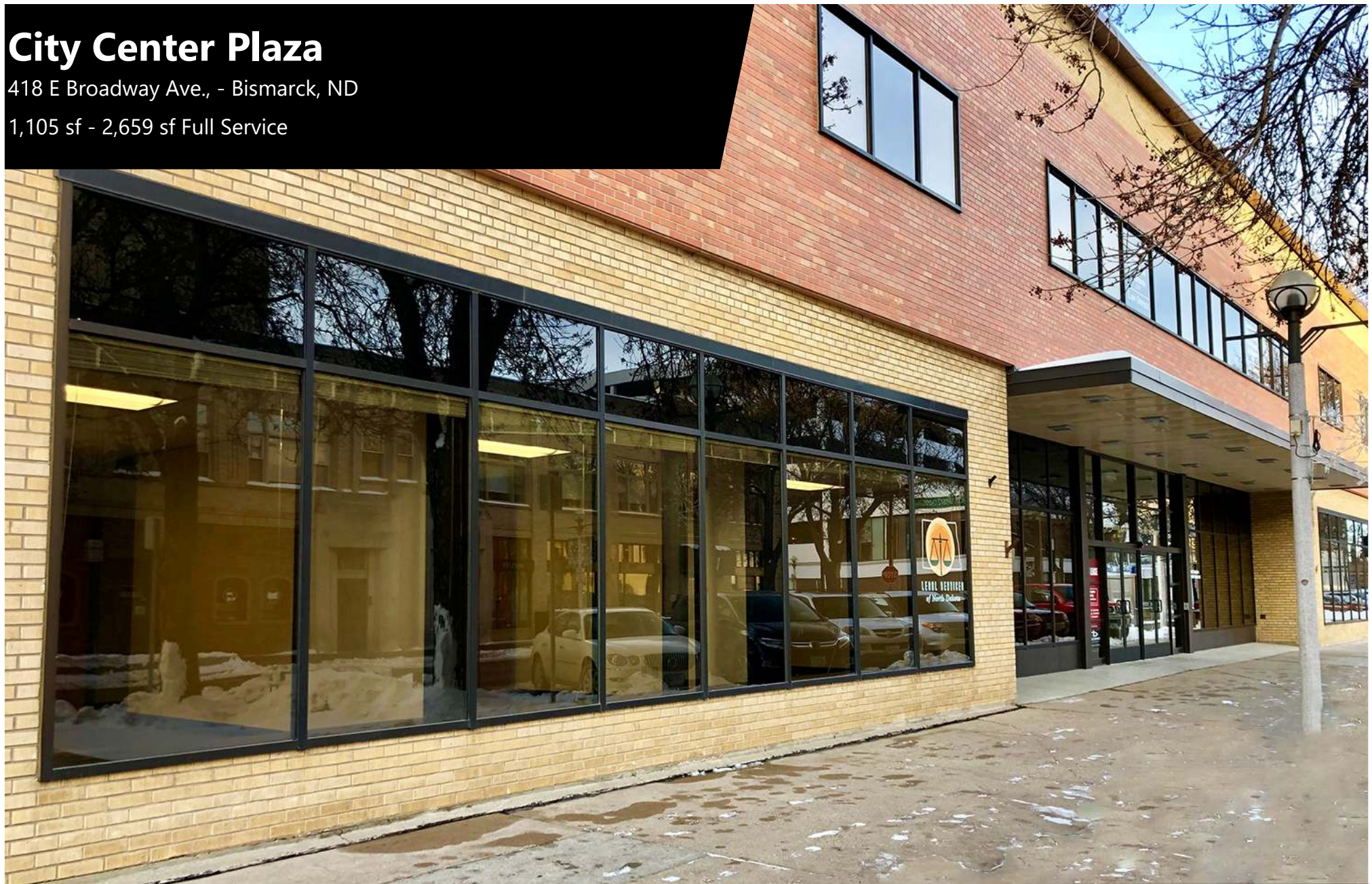


City Center Plaza

418 E Broadway Ave., - Bismarck, ND

1,105 sf - 2,659 sf Full Service



Taylor Daniel | Vice President
Commercial Realtor®
Taylor@DanielCompanies.com

Bill Daniel | President
CCIM, Broker
Bill@DanielCompanies.com

DanielCompanies.com

Executive Summary for Lease

| | |
|---------------------------------|---|
| Address: | 418 E Broadway Ave #12 - Bismarck, ND |
| Property Name: | City Center Plaza |
| Date Available: | Now |
| Lease Term: | 3 or 5 Year |
| Lease Rate: | \$16.00 psf / \$3,211 mo. |
| Approximate SF: | 2,408 sf |
| Parking: | Street and Ramp parking maybe available |
| Tenant Responsibilities: | Base Rent, Internet, and Phone |

Broker does not guarantee the information describing this property. Interested parties are advised to independently verify the information through personal inspectors or with appropriate professionals.



\$3,211 mo. - 2,408 sf

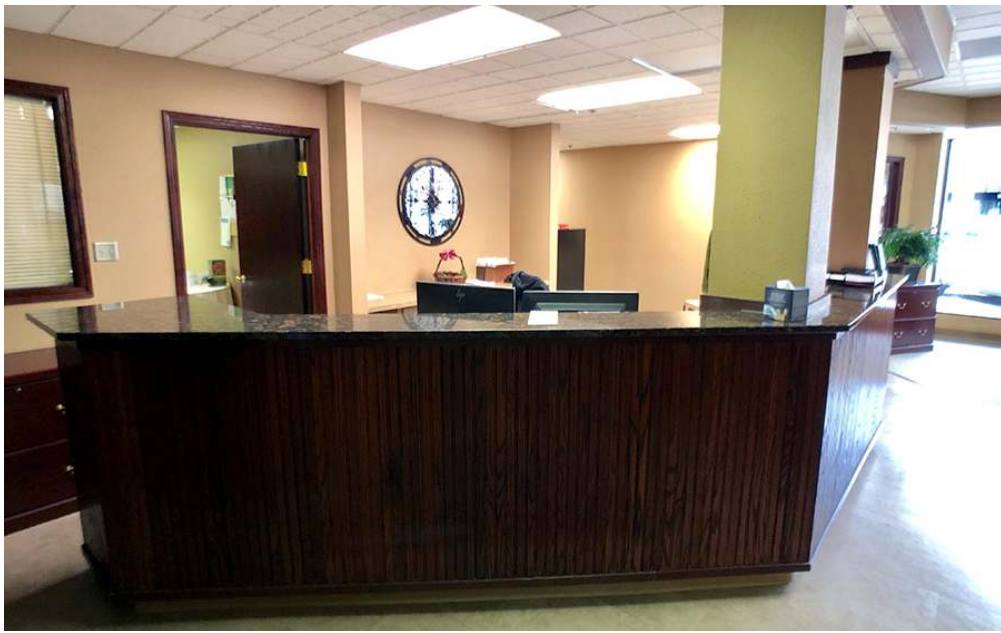
- Rare street front, Downtown Space
- Private Offices
- Common Restroom
- Common Conference Room
- Reception Area
- Break room with wet bar
- Elevator
- Great Corner Location: Corner of N 5th St and E Broadway Ave.
- In the heart of Downtown Bismarck
- Across the street from City Parking Ramp
- Walking distance to many downtown restaurants / bars / boutiques
- Easy access to Bismarck Event Center, Kirkwood Mall, and City & County Offices
- Common conference room available on 2nd for tenant use



Taylor Daniel | Vice President
Commercial Realtor®
Taylor@DanielCompanies.com

Bill Daniel | President
CCIM, Broker
Bill@DanielCompanies.com

DanielCompanies.com



Taylor Daniel | Vice President
Commercial Realtor®
Taylor@DanielCompanies.com

Bill Daniel | President
CCIM, Broker
Bill@DanielCompanies.com

DanielCompanies.com



Taylor Daniel | Vice President
Commercial Realtor®
Taylor@DanielCompanies.com

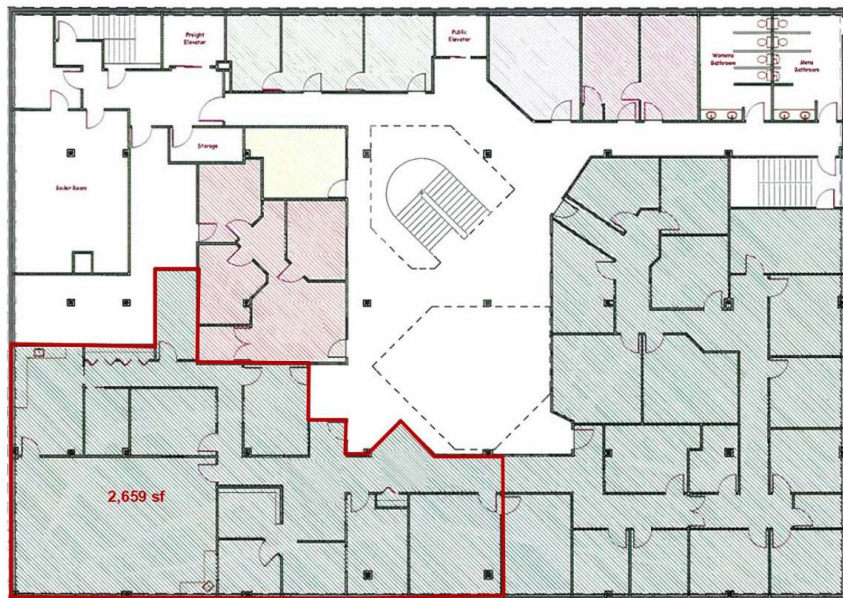
Bill Daniel | President
CCIM, Broker
Bill@DanielCompanies.com

DanielCompanies.com

Executive Summary for Lease

| | |
|---------------------------------|---|
| Address: | 418 E Broadway Ave Ste. 40 - Bismarck, ND |
| Property Name: | City Center Plaza - Lower Level |
| Date Available: | Now |
| Lease Term: | 3 or 5 Year |
| Lease Rate: | \$9.95 psf / \$2,204.75 mo. |
| Approximate SF: | 2,659 sf |
| Parking: | Street and Ramp parking maybe available |
| Tenant Responsibilities: | Base Rent, Internet, and Phone |

Broker does not guarantee the information describing this property. Interested parties are advised to independently verify the information through personal inspectors or with appropriate professionals.



\$2,204.75 mo. - 2,659 sf

- Private Offices
- Common Restroom
- Common Conference Room
- Reception Area
- Break room with wet bar
- Elevator
- Great Corner Location: Corner of N 5th St and E Broadway Ave.
- In the heart of Downtown Bismarck
- Across the street from City Parking Ramp
- Walking distance to many downtown restaurants / bars / boutiques
- Easy access to Bismarck Event Center, Kirkwood Mall, and City & County Offices
- Common conference room available on 2nd for tenant use



Taylor Daniel | Vice President
 Commercial Realtor®
Taylor@DanielCompanies.com

Bill Daniel | President
 CCIM, Broker
Bill@DanielCompanies.com

DanielCompanies.com

Executive Summary for Lease

| | |
|---------------------------------|--|
| Address: | 418 E Broadway Ave Ste. 246 - Bismarck, ND |
| Property Name: | City Center Plaza - Second Floor |
| Date Available: | Now |
| Lease Term: | 3 or 5 Year |
| Lease Rate: | \$15.50 psf / \$1,427.30 mo. |
| Approximate SF: | 1,105 sf |
| Parking: | Street and Ramp parking maybe available |
| Tenant Responsibilities: | Base Rent, Internet, and Phone |

Broker does not guarantee the information describing this property. Interested parties are advised to independently verify the information through personal inspectors or with appropriate professionals.



\$1,427.29. - 1,105 sf

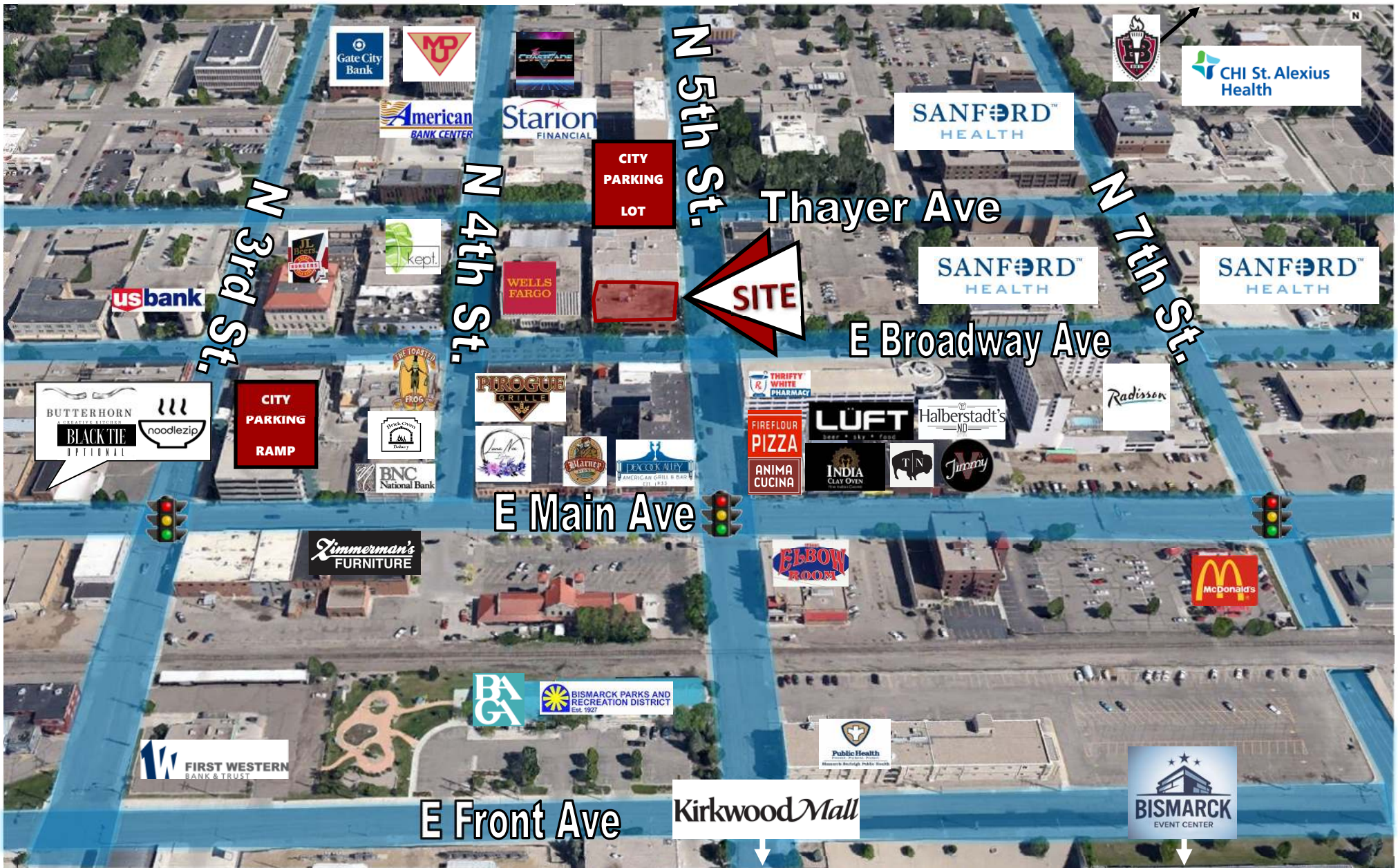
- Private Offices
- Common Restroom
- Common Conference Room
- Reception Area
- Elevator
- Great Corner Location: Corner of N 5th St and E Broadway Ave.
- In the heart of Downtown Bismarck
- Across the street from City Parking Ramp
- Walking distance to many downtown restaurants / bars / boutiques
- Easy access to Bismarck Event Center, Kirkwood Mall, and City & County Offices
- Common conference room available on 2nd for tenant use



Taylor Daniel | Vice President
 Commercial Realtor®
Taylor@DanielCompanies.com

Bill Daniel | President
 CCIM, Broker
Bill@DanielCompanies.com

DanielCompanies.com



Taylor Daniel | Vice President
 Commercial Realtor®
Taylor@DanielCompanies.com

Bill Daniel | President
 CCIM, Broker
Bill@DanielCompanies.com

DanielCompanies.com

Join Exciting Downtown Bismarck!



Bismarck Veterans Memorial Public Library



THE BARBER'S WIFE EST. 2015



THREEFOLD



BOUTIQUE

BISMARCK MAGAZINE

WHITE LACE Bridal



hiccup's KIDS + BABY



Small town. Growing city.







DANIEL COMPANIES

The Leader in Commercial Real Estate



**Bill Daniel, CCIM | President
Commercial Broker**



701.220.2455

Bill@DanielCompanies.com



**Taylor Daniel | Vice President
Commercial Realtor®**



701.391.4262

Taylor@DanielCompanies.com

Serving commercial real estate clients with unmatched market knowledge, experience and a well-deserved reputation for integrity. They know the Bismarck-Mandan commercial real estate market better than anyone.

Powerful Team. Powerful Process. Powerful Results.