

City Center Plaza

418 E Broadway Ave Ste. 246 - Bismarck, ND

1,105 sf / \$15.50 psf Full Service



Taylor Daniel | Vice President
Commercial Realtor®
Taylor@DanielCompanies.com

Bill Daniel | President
CCIM, Broker
Bill@DanielCompanies.com

DanielCompanies.com

Executive Summary for Lease

Address:	418 E Broadway Ave Ste. 250 - Bismarck, ND
Date Available:	Now
Lease Rate:	\$15.50 psf / \$1,427.30 mo. - Full Service
Lease Term:	3 Year Minimum
Approximate SF:	1,105 sf
Parking:	Street and Ramp parking maybe available
Tenant Responsibilities:	Base Rent, Internet, and Phone

Broker does not guarantee the information describing this property. Interested parties are advised to independently verify the information through personal inspectors or with appropriate professionals.



DAYTIME POPULATION

.5 MILES	1 MILE	3 MILES
11,879	25,122	75,624



AVERAGE HOUSEHOLD INCOME

.5 MILES	1 MILE	3 MILES
\$34,004	\$46,959	\$59,713



2021 POPULATION

.5 MILES	1 MILE	3 MILES
2,667	13,770	64,019



EMPLOYEES

.5 MILES	1 MILE	3 MILES
12,678	26,044	\$59*713

- ◆ Prominent Downtown office building
- ◆ Offices and reception area
- ◆ In the Heart of Downtown Bismarck
- ◆ Common Restrooms
- ◆ Elevator
- ◆ Close to city parking lot and ramp
- ◆ Walk Score of 86 - Most errands can be accomplished on foot.



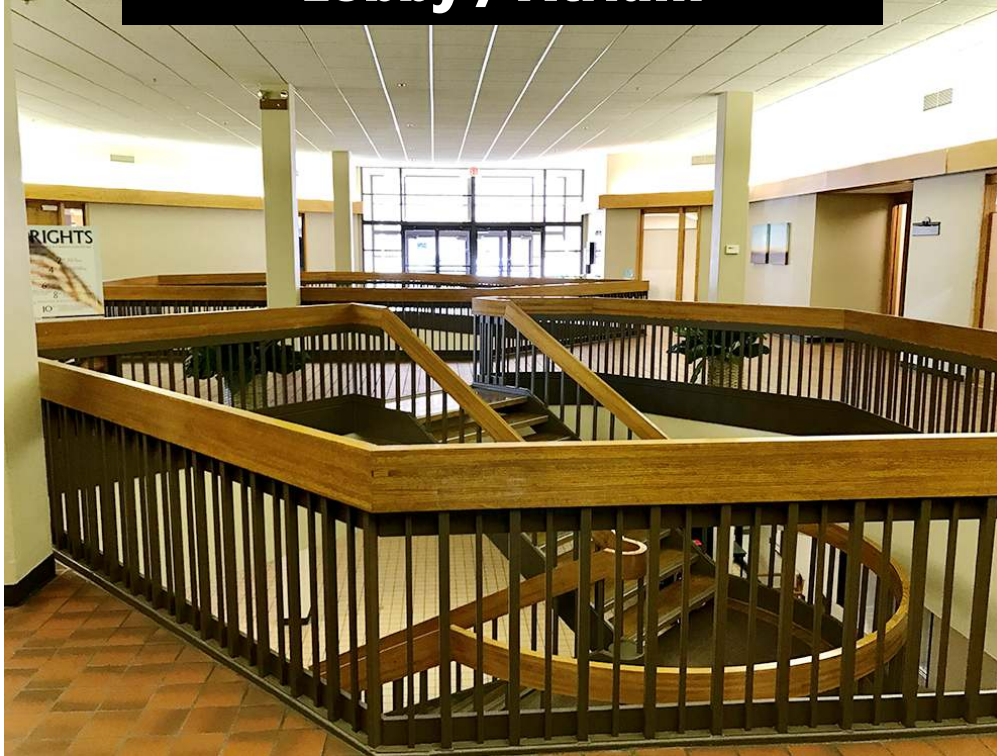
Taylor Daniel | Vice President
 Commercial Realtor®
Taylor@DanielCompanies.com

Bill Daniel | President
 CCIM, Broker
Bill@DanielCompanies.com

DanielCompanies.com

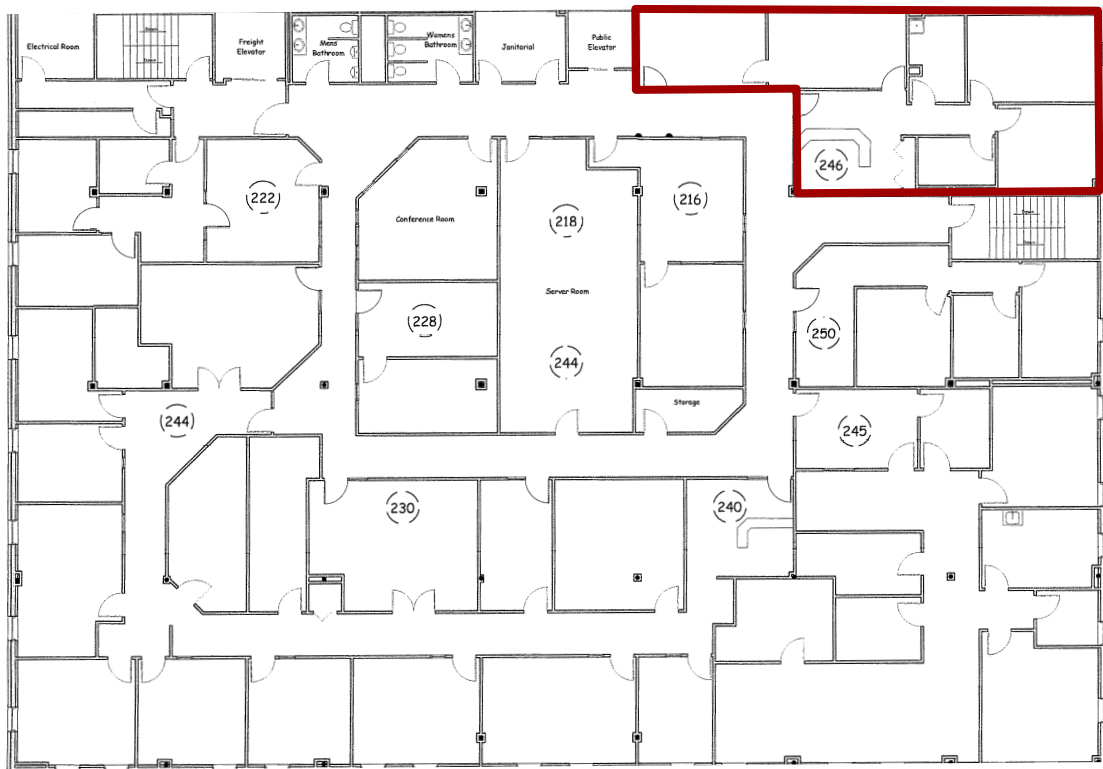


Lobby / Atrium



Common Conference Room







Join Exciting Downtown Bismarck!



Bismarck Veterans Memorial Public Library

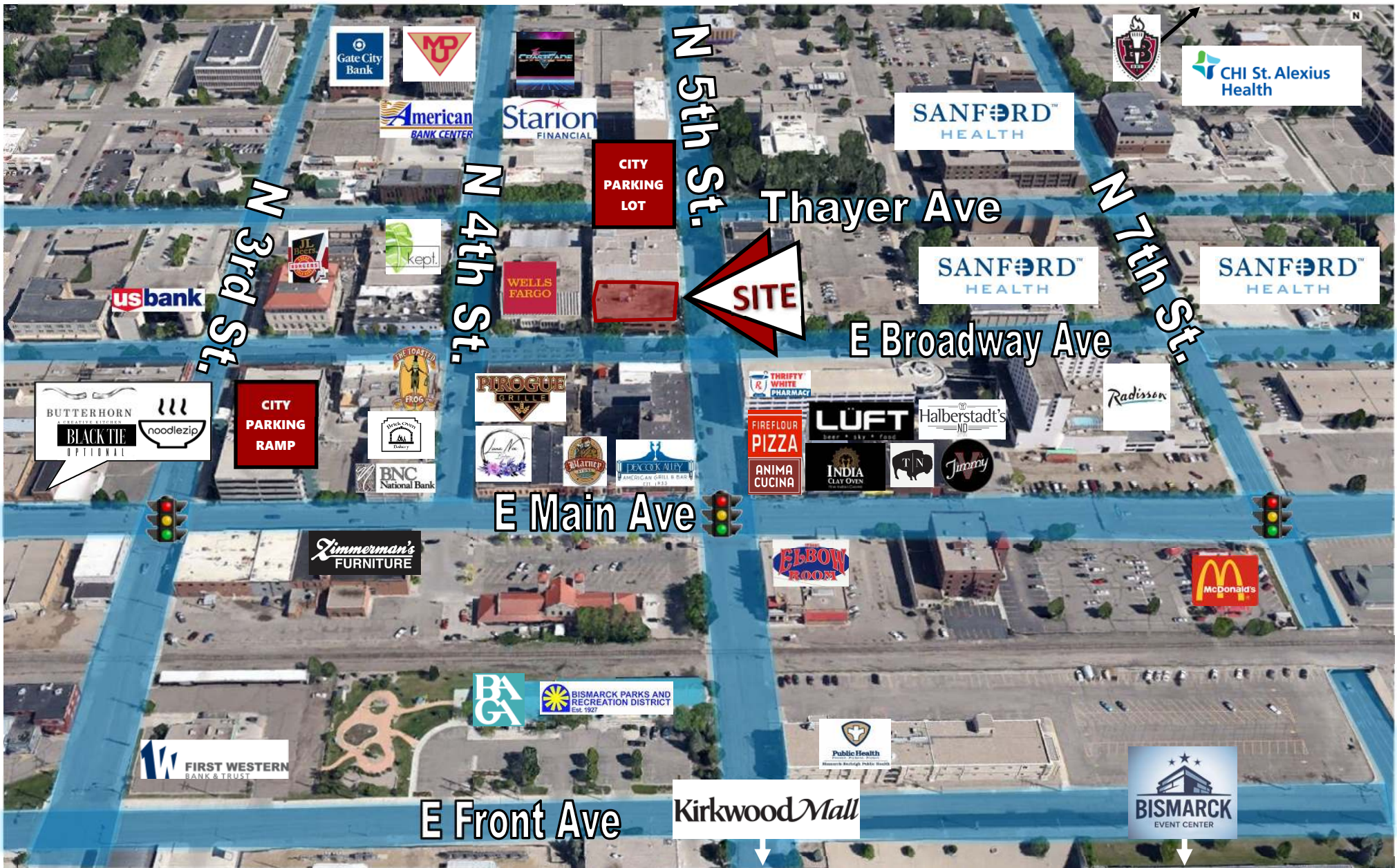


THREEFOLD



Small town. Growing city.







DANIEL COMPANIES

The Leader in Commercial Real Estate



**Bill Daniel, CCIM | President
Commercial Broker**

701.220.2455

Bill@DanielCompanies.com



**Taylor Daniel | Vice President
Commercial Realtor®**

701.391.4262

Taylor@DanielCompanies.com

Serving commercial real estate clients with unmatched market knowledge, experience and a well-deserved reputation for integrity. They know the Bismarck-Mandan commercial real estate market better than anyone.

Powerful Team. Powerful Process. Powerful Results.