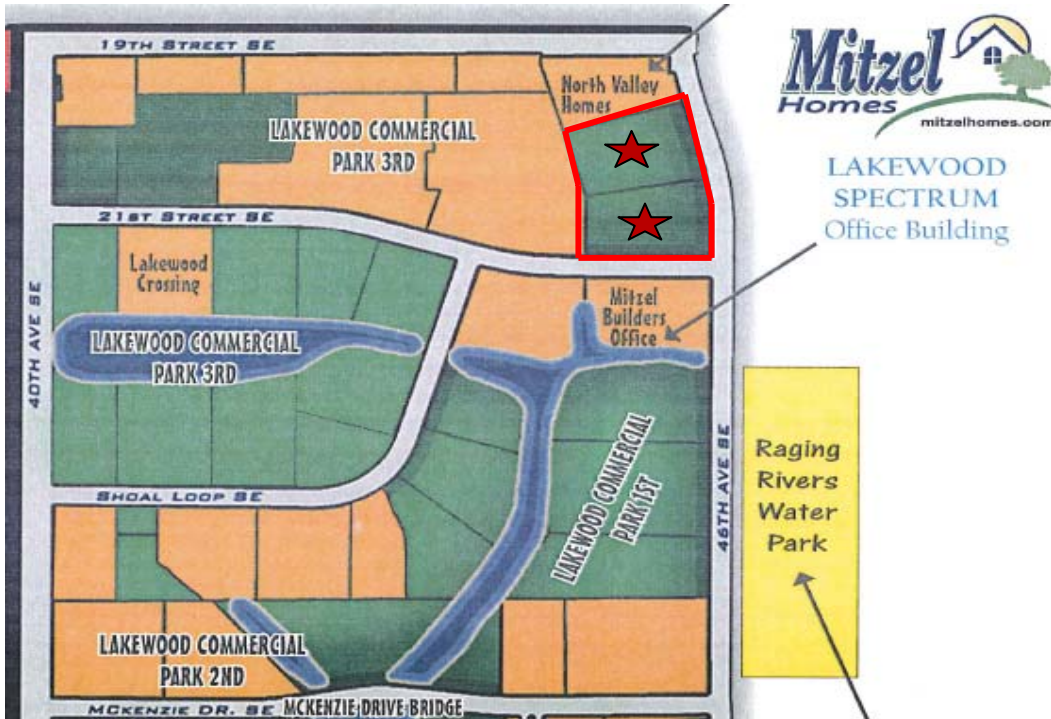
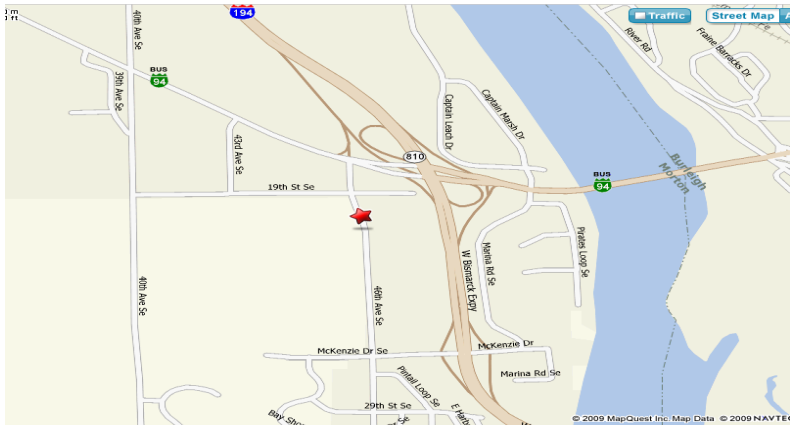




DANIEL COMPANIES
The Leader in Commercial



- Sales Price \$3.10 psf + specials
- Parcel Sizes .. 1.5 to 3.5 Acres
Lot 2 .. 103,811 sf
Lot 3 .. 105,505 sf
- North of Spectrum Bldg
- Near Raging River Water Park
- Great 46th Av SE Frontage
- Visibility From I-94 Bypass



Lakewood Commercial Park
46th Av SE – Mandan ND

Contact Information:

Bill Daniel, ccim
701.220.2455
Bill@DanielCompanies.com

Kyle Holwagner
701.400.5373
Kyle@DanielCompanies.com

Ann Sharp
701.220.0261
Ann@DanielCompanies.com

Daniel Companies
304 E Rosser Ave Suite 200
Bismarck ND 58501
701.223.8488
701.223.8860 fax

Broker does not guarantee the information describing this property. Interested parties are advised to independently verify the information through personal inspectors or with appropriate professionals.

DanielCompanies.com