

2 Commercial Parcels

5429 & 5531 E. Main Ave. - Bismarck, ND

\$450,000

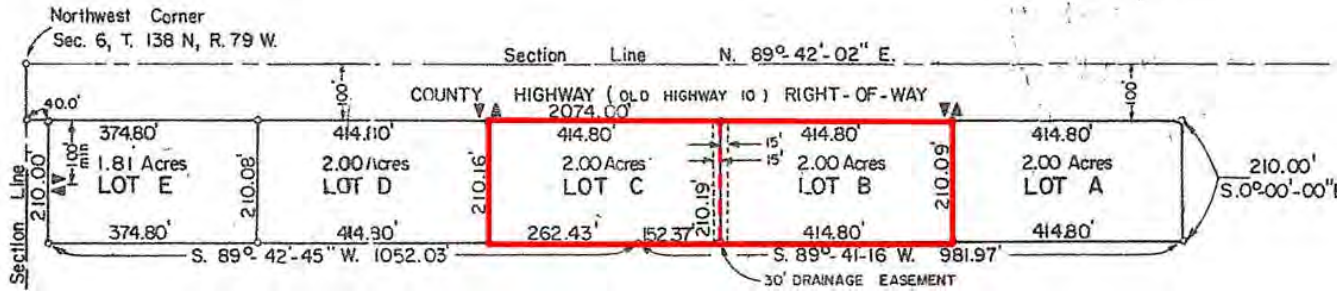


Kyle Holwagner, CCIM, SIOR
701.400.5373
Kyle@DanielCompanies.com

Kristyn Steckler, Senior Client Coordinator
701.527.0138
Kristyn@DanielCompanies.com

DanielCompanies.com

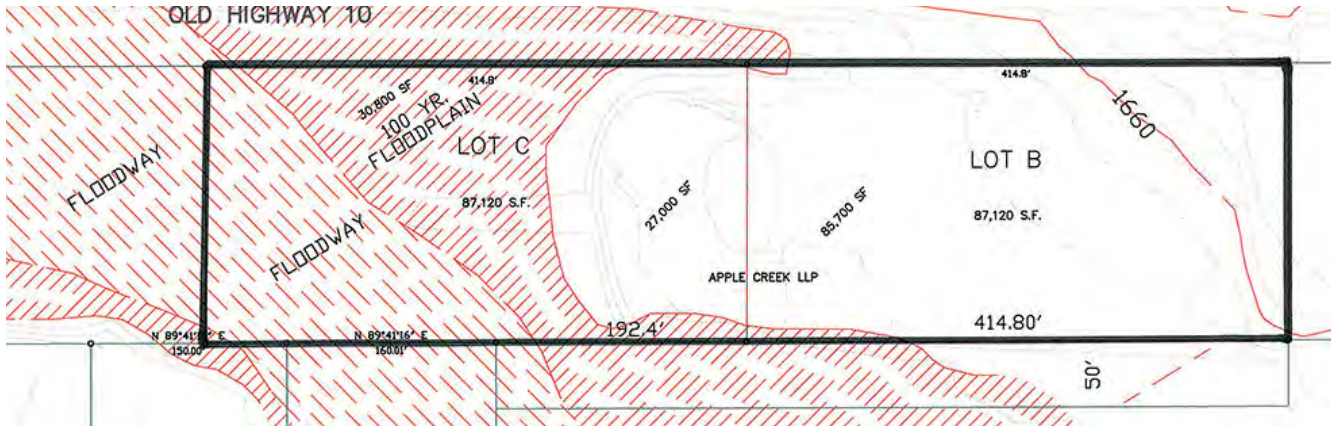
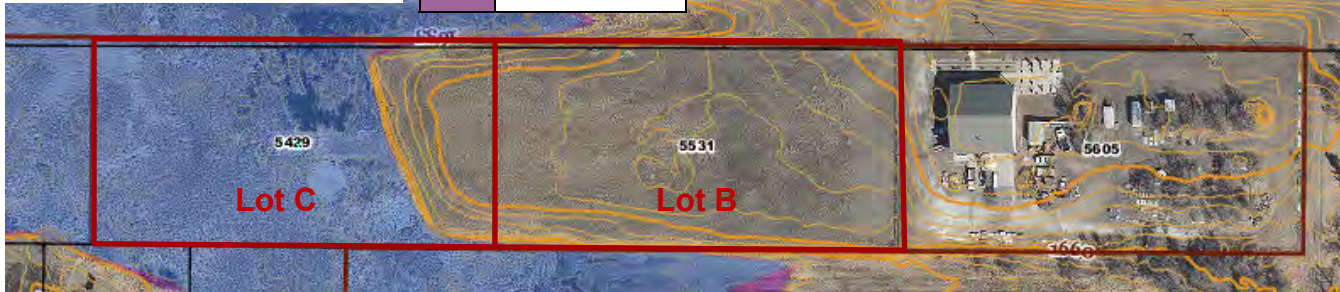
Plat



Topography Map

*Obtained from the Burleigh County GIS Flood Map
Property is located in flood plain

100 Year Flood Plain
500 Year Flood Plain



Sale Price: \$450,000

- 114,120 sf Buildable @ \$439,200 est. @ 3.85 psf
- 30,800 sf Floodplain @ \$10,800 est. @ .35 psf
- 29,320 sf Floodway
- Lot Size: 174,240 sf / 4 acres
- Lot C Lot 1: 87,120 sf / 2 acres
- Lot B Lot 1: 87,120 sf / 2 acres
- Zoned: CG Commercial
- No City Services
- Taxes - Approx. \$123 (2017)
- No Special Assessments

Surrounding Businesses

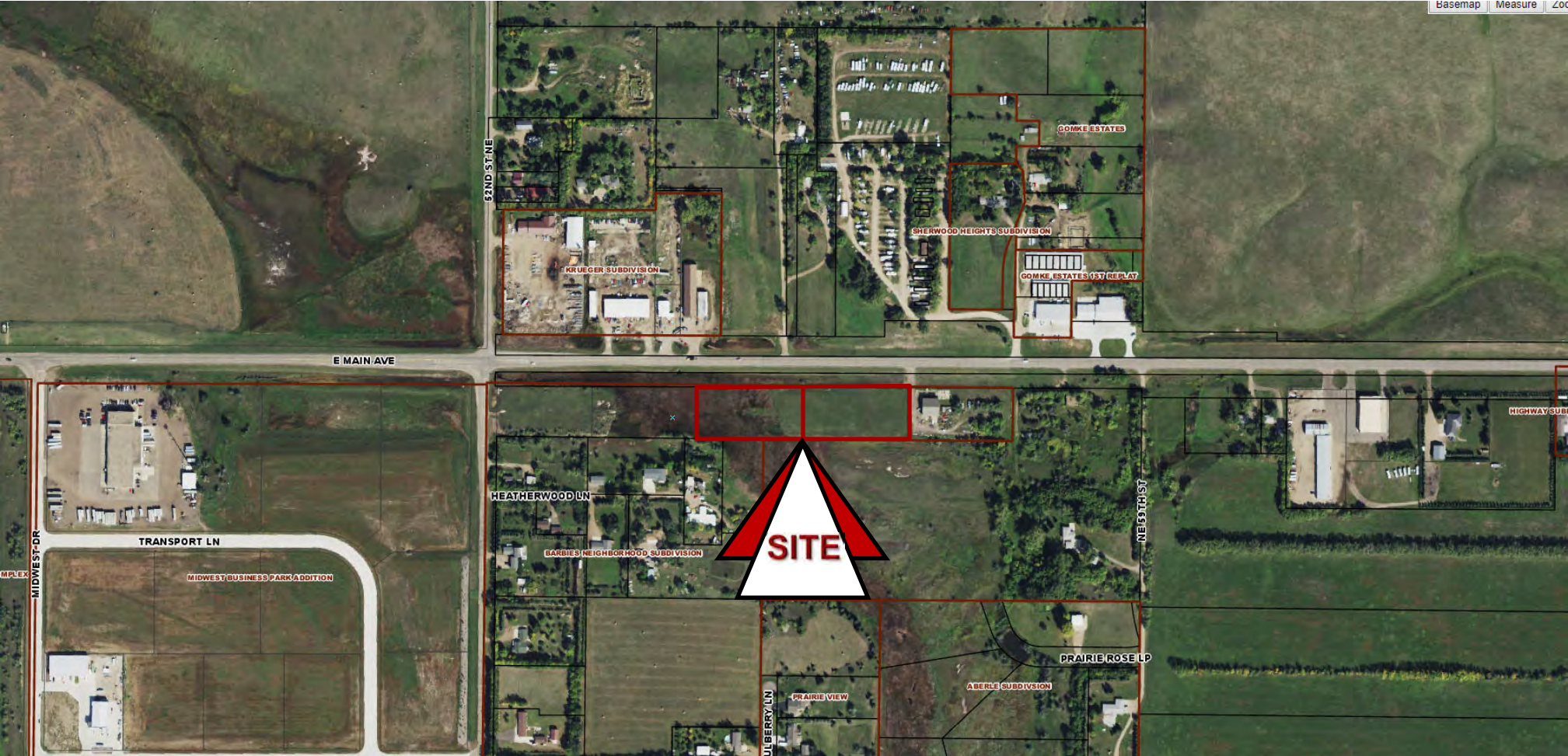
- Midwest Business Park
- Bismarck Rural Fire Department
- Buckstop Junction
- ND Game & Fish
- Bismarck City Landfill
- River City Sports
- Subway
- Acme Tools
- Midwest Motor Express



Kyle Holwagner, CCIM, SIOR
701.400.5373
Kyle@DanielCompanies.com

Kristyn Steckler, Senior Client Coordinator
701.527.0138
Kristyn@DanielCompanies.com

Aerial Views



Kyle Holwagner, CCIM, SIOR
701.400.5373
Kyle@DanielCompanies.com

Kristyn Steckler, Senior Client Coordinator
701.527.0138
Kristyn@DanielCompanies.com



DANIEL COMPANIES

The Leader in Commercial Real Estate



Kyle Holwagner
CCIM, SIOR

701.400.5373
Kyle@DanielCompanies.com



Kristyn Steckler
REALTOR®

701.527.0138
Kristyn@DanielCompanies.com

Serving commercial real estate clients with unmatched market knowledge, experience and a well-deserved reputation for integrity. They know the Bismarck-Mandan commercial real estate market better than anyone.

Powerful Team. Powerful Process. Powerful Results.