

2 Commercial Parcels

5429 & 5531 E. Main Ave.

Bismarck, ND



Kyle Holwagner, CCIM, SIOR

701.400.5373

Kyle@DanielCompanies.com

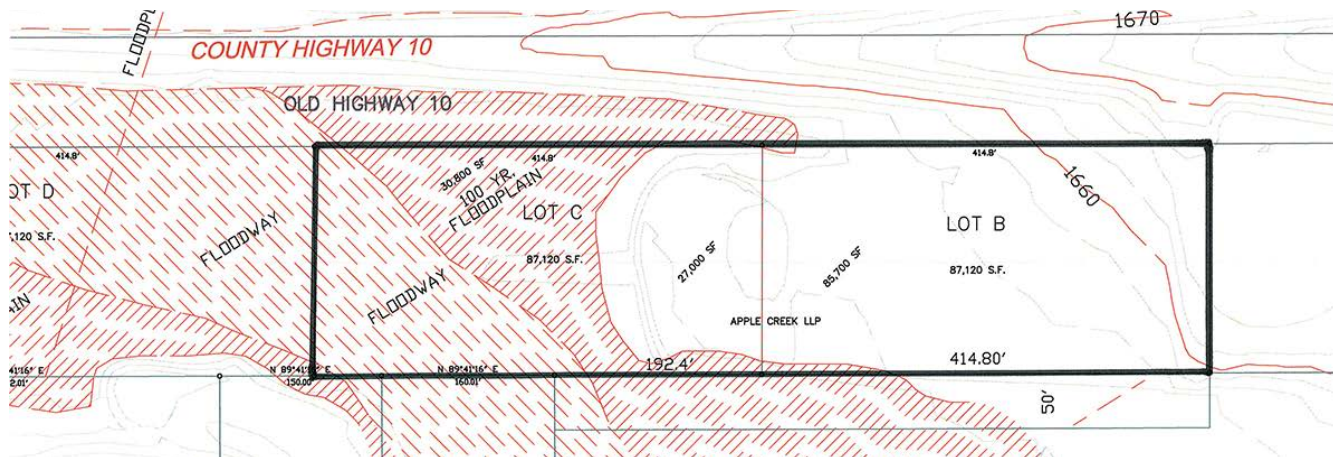
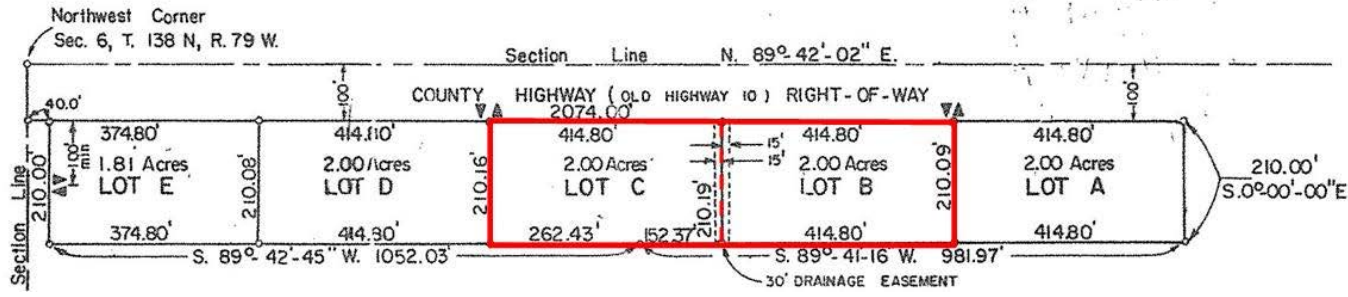
Kristyn Steckler, Market Coordinator

701.527.0138

Kristyn@DanielCompanies.com

DanielCompanies.com

Plat



Sale Price: \$450,000

- 114,120 sf Buildable @ \$439,200 est. @ 3.85 psf
- 30,800 sf Floodplain @ \$10,800 est. @ .35 psf
- 29,320 sf Floodway
- Lot Size: 174,240 sf / 4 acres
- Lot C Lot 1: 87,120 sf / 2 acres
- Lot B Lot 1: 87,120 sf / 2 acres
- Zoned: CG Commercial
- No City Services
- Taxes - Approx. \$123 (2017)
- No Special Assessments

Surrounding Businesses

- Midwest Business Park
- Bismarck Rural Fire Department
- Buckstop Junction
- ND Game & Fish
- Bismarck City Landfill
- River City Sports
- Subway
- Acme Tools
- Midwest Motor Express



Kyle Holwagner, CCIM, SIOR
701.400.5373
Kyle@DanielCompanies.com

Kristyn Steckler, Market Coordinator
701.527.0138
Kristyn@DanielCompanies.com

Aerial Views



Kyle Holwagner, CCIM, SIOR
701.400.5373
Kyle@DanielCompanies.com

Kristyn Steckler, Market Coordinator
701.527.0138
Kristyn@DanielCompanies.com



DANIEL COMPANIES

The Leader in Commercial Real Estate

Serving commercial real estate clients with unmatched market knowledge, experience, and a well-deserved reputation for integrity. They know the Bismarck-Mandan commercial real estate market better than anyone. This powerful team delivers powerful results.



Bill Daniel, CCIM, Broker
701.220.2455
Bill@DanielCompanies.com



Kyle Holwagner, CCIM, SIOR
701.400.5373
Kyle@DanielCompanies.com



Taylor Daniel, Commercial REALTOR®
701.391.4262
Taylor@DanielCompanies.com

701.223.8488
304 E ROSSER AVE #200
BISMARCK, ND 58501



ICSC CCIM SIOR
INDIVIDUAL MEMBERS

RETAIL • INVESTMENTS • OFFICE • INDUSTRIAL • SITE SELECTION • LEASING • BUILD TO SUIT • BROKERAGE