

Commercial Building

4630 Carbine Dr.

Bismarck, ND



Kyle Holwagner, CCIM, SIOR

701.400.5373

Kyle@DanielCompanies.com

Kristyn Steckler, Market Coordinator

701.527.0138

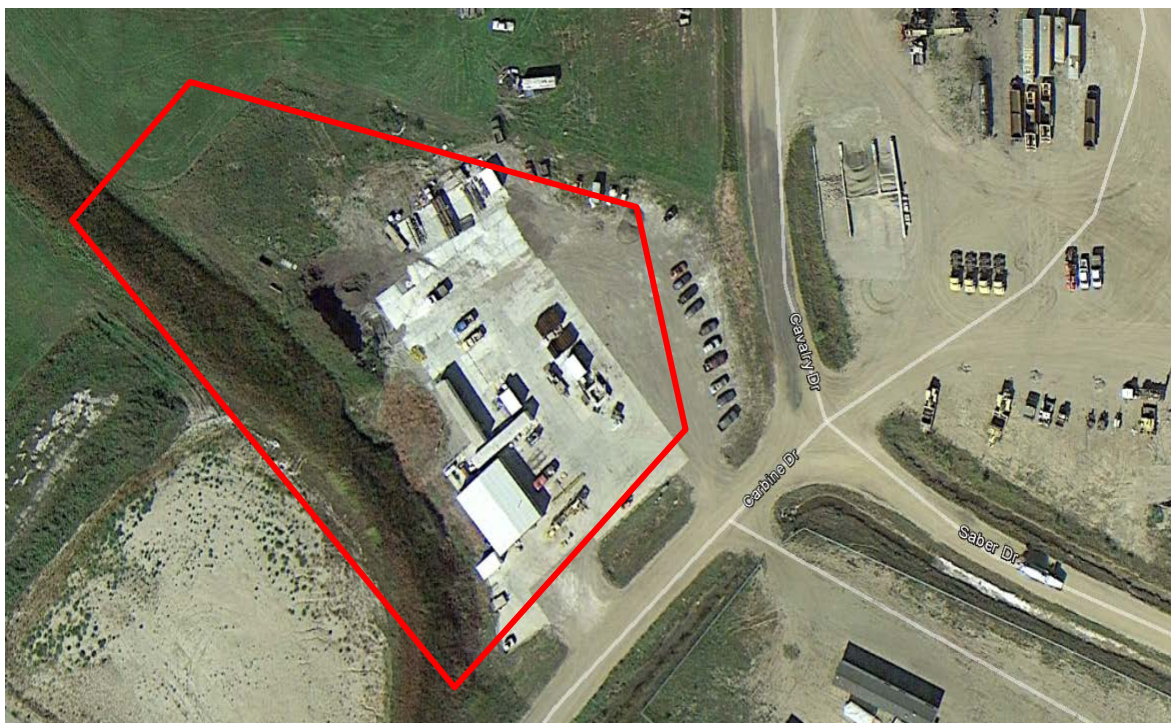
Kristyn@DanielCompanies.com

DanielCompanies.com



Price: \$525,000

- Lot Size: 2.97 acres
- Building Size: 2,080 sf
- 12' Sidewalls
- 12' x 11.6' Overhead Door
- 10' x 17' Office, Restroom
- Built 2011
- Taxes 2017: \$1636.07 / No Special Assessments
- Non-Potable Well Water
- Improved surface area 52,000 sf, concrete lot



** All lot lines to be verified.*

Surrounding Businesses

- Mariner Construction
- CS Concrete Services
- Northern Coatings
- Anderson Western
- Hubbard Feeds
- Magnum Companies
- Fed Ex Freight

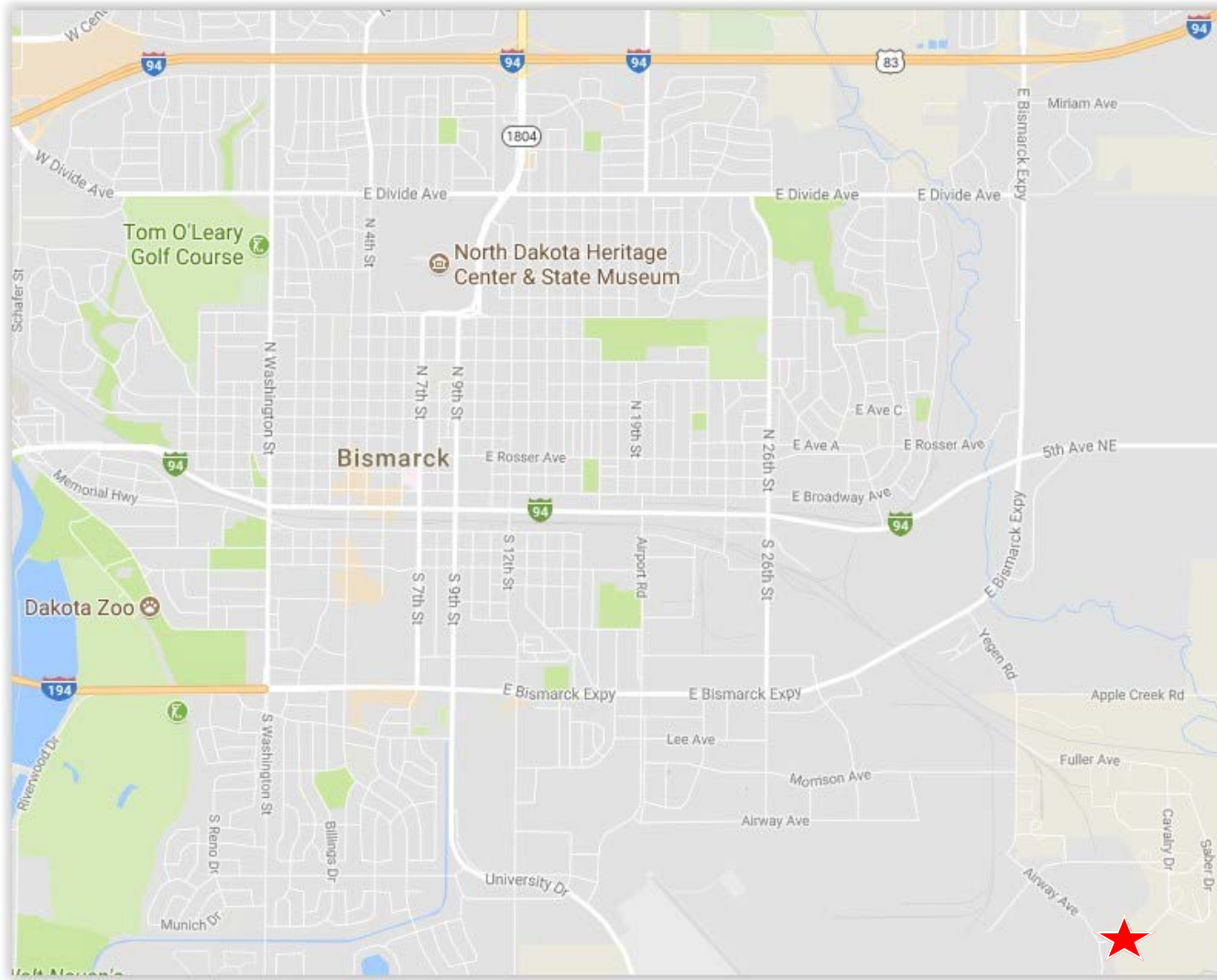


Kyle Holwagner, CCIM, SIOR
701.400.5373
Kyle@DanielCompanies.com

Kristyn Steckler, Market Coordinator
701.527.0138
Kristyn@DanielCompanies.com

DanielCompanies.com

Location Map



Kyle Holwagner, CCIM, SIOR
701.400.5373
Kyle@DanielCompanies.com

Kristyn Steckler, Market Coordinator
701.527.0138
Kristyn@DanielCompanies.com

DanielCompanies.com



DANIEL COMPANIES

The Leader in Commercial Real Estate

Serving commercial real estate clients with unmatched market knowledge, experience, and a well-deserved reputation for integrity. They know the Bismarck-Mandan commercial real estate market better than anyone. This powerful team delivers powerful results.



Bill Daniel, CCIM, Broker
701.220.2455
Bill@DanielCompanies.com



Kyle Holwagner, CCIM, SIOR
701.400.5373
Kyle@DanielCompanies.com



Taylor Daniel, Commercial REALTOR®
701.391.4262
Taylor@DanielCompanies.com

701.223.8488
304 E ROSSER AVE #200
BISMARCK, ND 58501



ICSC CCIM SIOR
INDIVIDUAL MEMBERS

RETAIL • INVESTMENTS • OFFICE • INDUSTRIAL • SITE SELECTION • LEASING • BUILD TO SUIT • BROKERAGE