

Commercial Building

4630 Carbine Dr. - Bismarck, ND

\$525,000 - Lot 2.97 acres



Kyle Holwagner, CCIM, SIOR
701.400.5373
Kyle@DanielCompanies.com

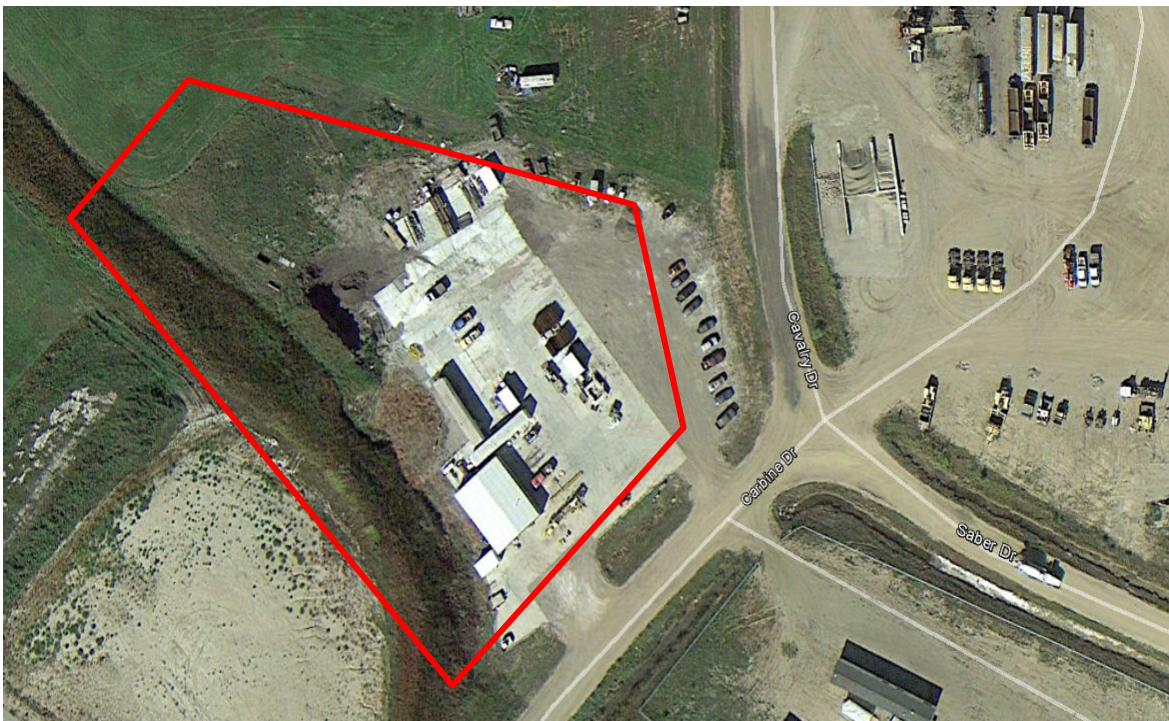
Kristyn Steckler, Senior Client Coordinator
701.527.0138
Kristyn@DanielCompanies.com

DanielCompanies.com



Price: \$525,000

- Lot Size: 2.97 acres
- Building Size: 2,080 sf
- 12' Sidewalls
- 12' x 11.6' Overhead Door
- 10' x 17' Office, Restroom
- Built 2011
- Taxes 2017: \$1636.07 / No Special Assessments
- Non-Potable Well Water
- Improved surface area 52,000 sf, concrete lot



Surrounding Businesses

- Mariner Construction
- CS Concrete Services
- Northern Coatings
- Anderson Western
- Hubbard Feeds
- Magnum Companies
- Fed Ex Freight

** All lot lines to be verified.*



Kyle Holwagner, CCIM, SIOR
701.400.5373
Kyle@DanielCompanies.com

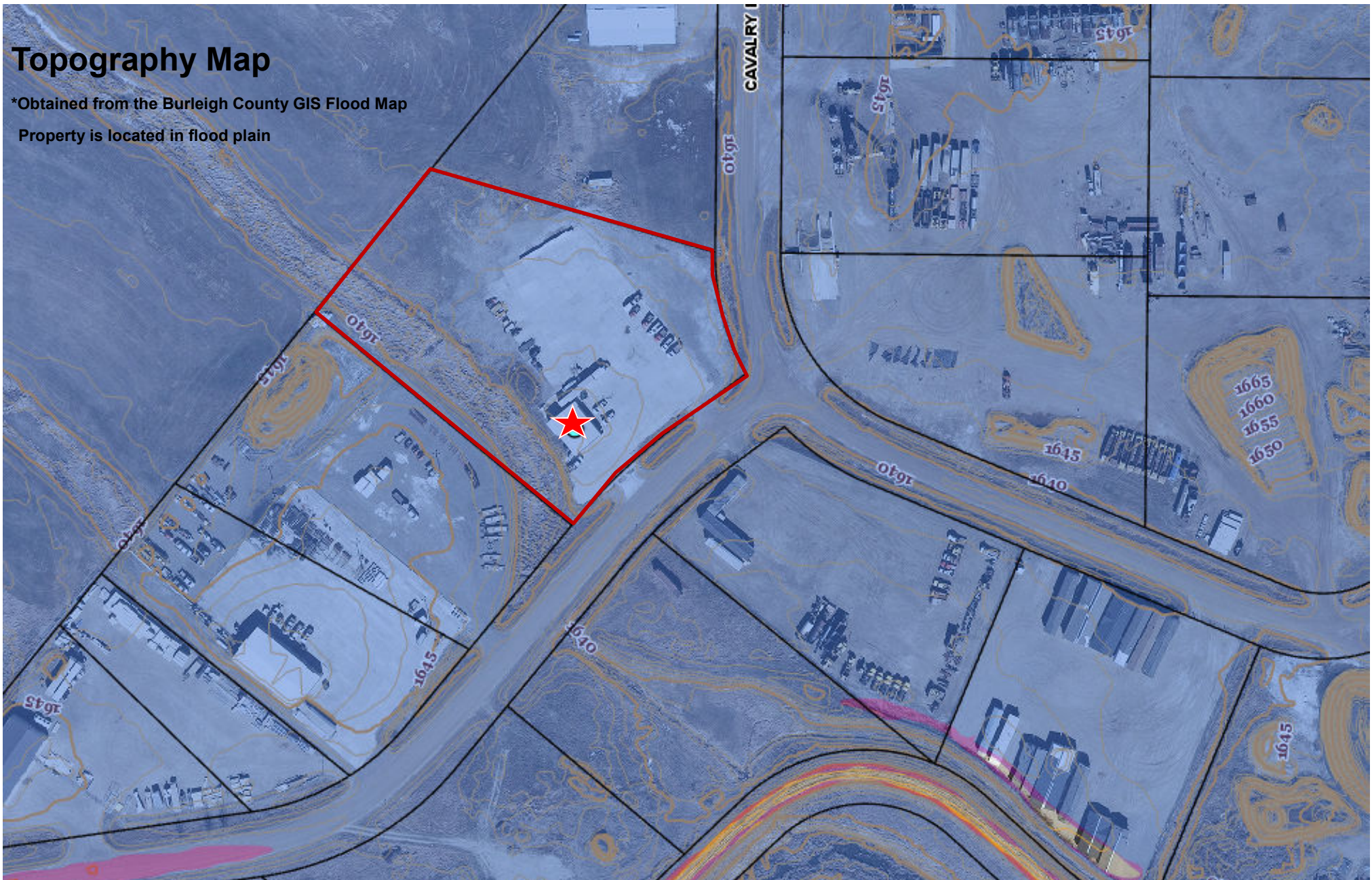
Kristyn Steckler, Senior Client Coordinator
701.527.0138
Kristyn@DanielCompanies.com

DanielCompanies.com

Topography Map

*Obtained from the Burleigh County GIS Flood Map

Property is located in flood plain



Kyle Holwagner, CCIM, SIOR
701.400.5373
Kyle@DanielCompanies.com

Kristyn Steckler, Senior Client Coordinator
701.527.0138
Kristyn@DanielCompanies.com

DanielCompanies.com



DANIEL COMPANIES

The Leader in Commercial Real Estate



Kyle Holwagner
CCIM, SIOR

701.400.5373
Kyle@DanielCompanies.com



Kristyn Steckler
REALTOR®

701.527.0138
Kristyn@DanielCompanies.com

Serving commercial real estate clients with unmatched market knowledge, experience and a well-deserved reputation for integrity. They know the Bismarck-Mandan commercial real estate market better than anyone.

Powerful Team. Powerful Process. Powerful Results.