

Spaedy Office Plaza

2400 E Broadway Ave

Bismarck, ND



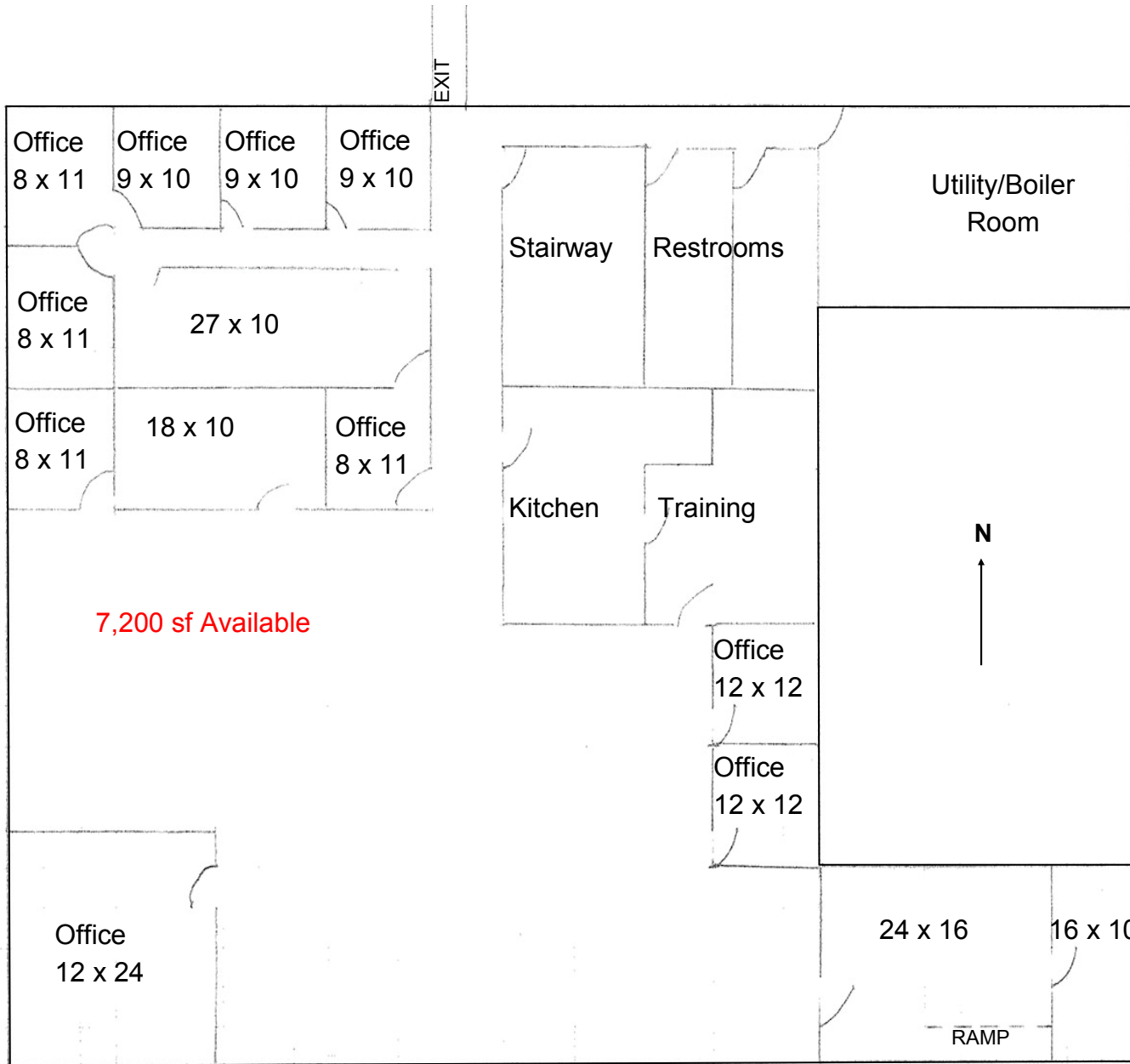
Kyle Holwagner, CCIM, SIOR
701.400.5373

Kyle@DanielCompanies.com

Kristyn Steckler, Market Coordinator
701.527.0138

Kristyn@DanielCompanies.com

DanielCompanies.com



2nd Floor: 7,200 sf Available

- Lease: \$12.00 psf
- Private Offices, Training Room
- Kitchen, Conference Room
- Full Service Lease
- Off Street Parking
- Private ADA Restrooms
- Elevator
- Tenant Pays:
 - Janitorial
 - Light Bulbs
 - Carpet Cleaning
- New Flooring & Paint
- Good Access and Great Visibility

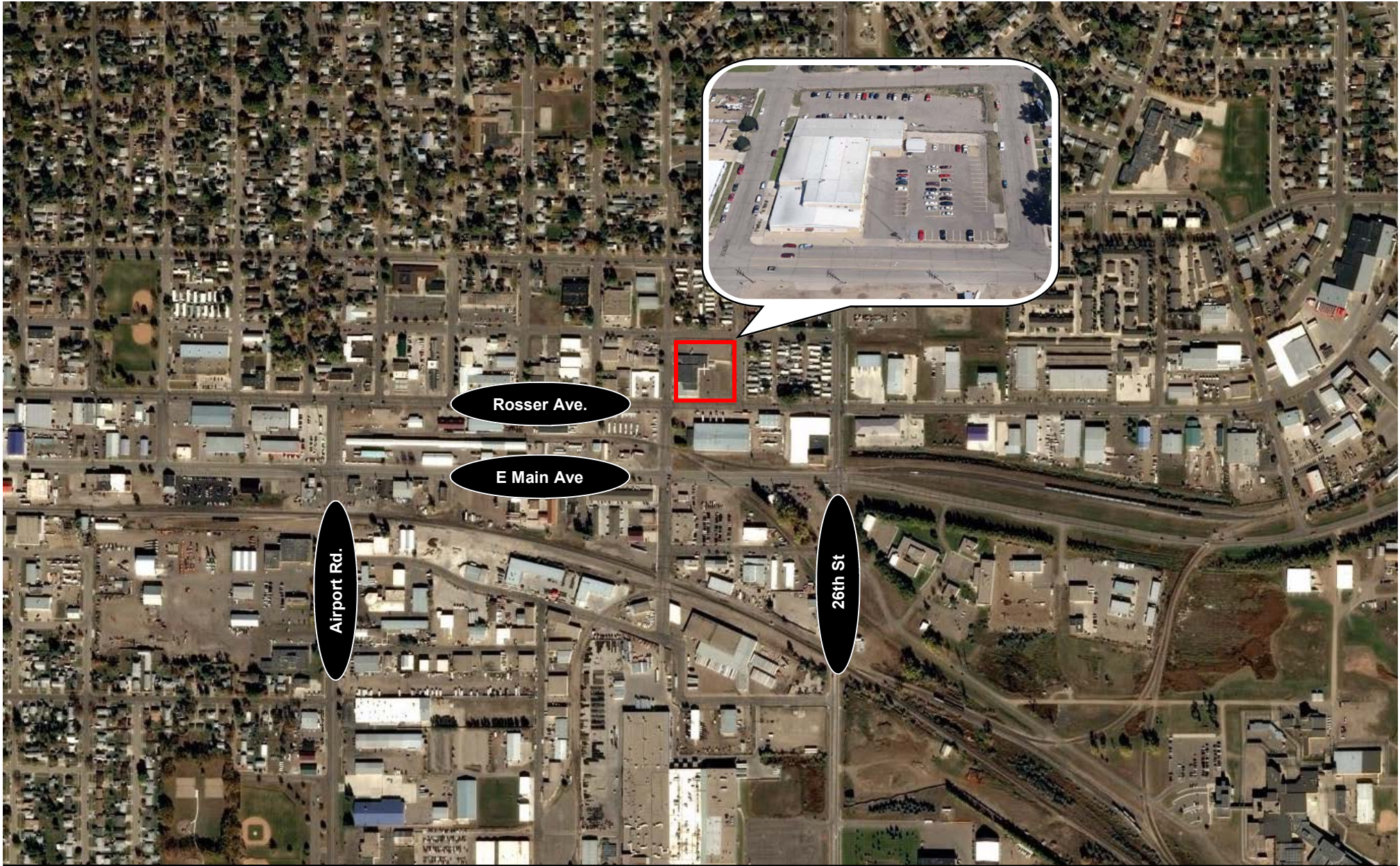
***Not to scale, for visual purposes only. Floor Plan may vary.*



Kyle Holwagner, CCIM, SIOR
701.400.5373
Kyle@DanielCompanies.com

Kristyn Steckler, Market Coordinator
701.527.0138
Kristyn@DanielCompanies.com

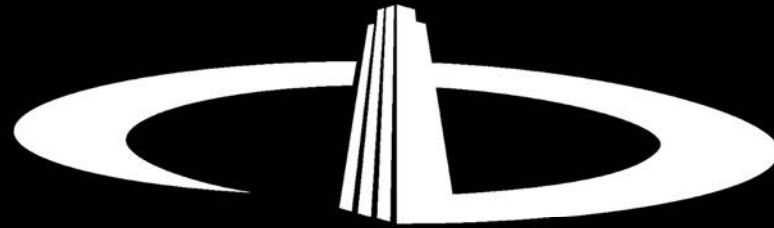
DanielCompanies.com



Kyle Holwagner, CCIM, SIOR
701.400.5373
Kyle@DanielCompanies.com

Kristyn Steckler, Market Coordinator
701.527.0138
Kristyn@DanielCompanies.com

DanielCompanies.com



DANIEL COMPANIES

The Leader in Commercial Real Estate

Serving commercial real estate clients with unmatched market knowledge, experience, and a well-deserved reputation for integrity. They know the Bismarck-Mandan commercial real estate market better than anyone. This powerful team delivers powerful results.



Bill Daniel, CCIM, Broker
701.220.2455
Bill@DanielCompanies.com



Kyle Holwagner, CCIM, SIOR
701.400.5373
Kyle@DanielCompanies.com



Taylor Daniel, Commercial REALTOR®
701.391.4262
Taylor@DanielCompanies.com

701.223.8488
304 E ROSSER AVE #200
BISMARCK, ND 58501



ICSC CCIM SIOR
INDIVIDUAL MEMBERS

RETAIL • INVESTMENTS • OFFICE • INDUSTRIAL • SITE SELECTION • LEASING • BUILD TO SUIT • BROKERAGE