

Downtown Retail / Mixed Use Center

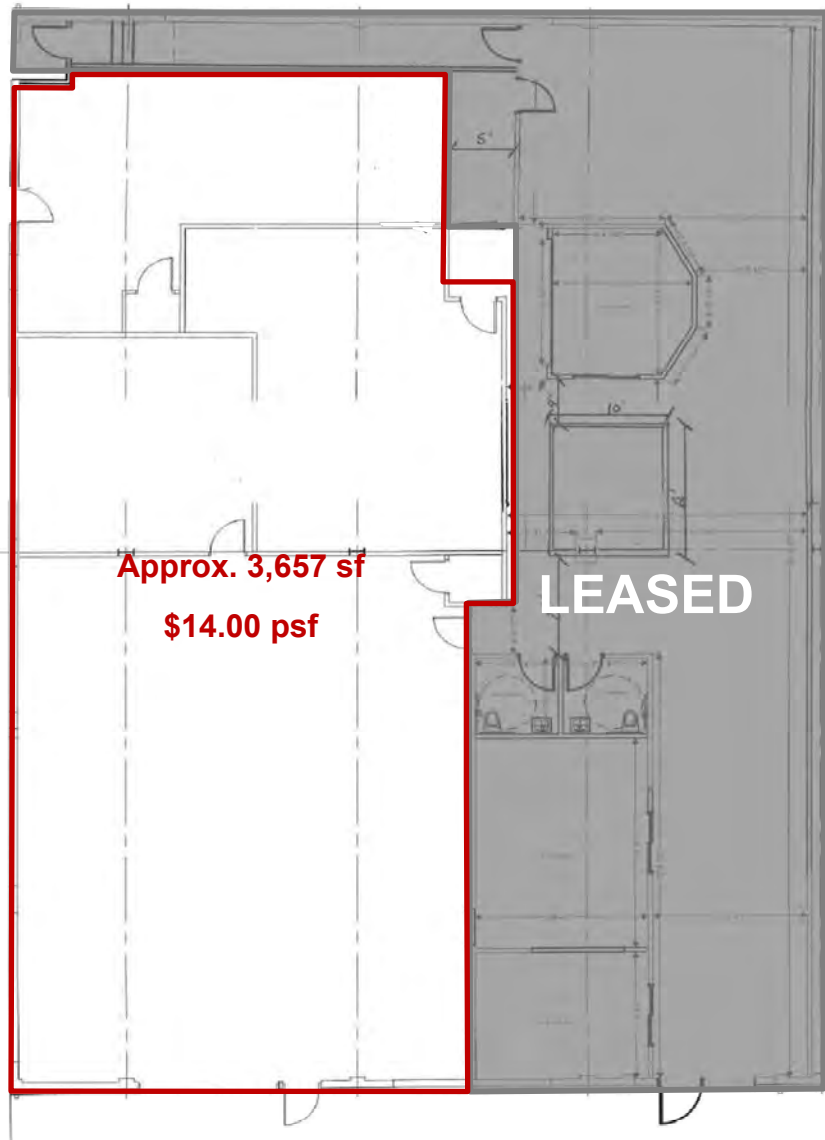
114 W Main
Bismarck, ND



Kyle Holwagner, CCIM, SIOR
701.400.5373
Kyle@DanielCompanies.com

Kristyn Steckler, Market Coordinator
701.527.0138
Kristyn@DanielCompanies.com

DanielCompanies.com



- Lease Price - \$14.00 psf NNN
- Lease Space: Approx. 3,657 sf
- 14' Sidewalls
- 12' x 10' Overhead Door
- Portion of Pylon Sign Available
- Approx. 10 off Street Parking Spaces
- Zoned DC Core Zoning District
- Proposed External Improvements

- Tenants responsibility including Net Cost Estimates
 - Separate Utilities
 - Janitorial
 - Rubbish Removal
 - Snow Removal - Prorated
 - Repairs & Maintenance - Prorated
 - Insurance Prorated
 - Pro-Rated Taxes (\$8,673)
 - Special Assessments (Installments: \$717) (Balance: \$1,092)

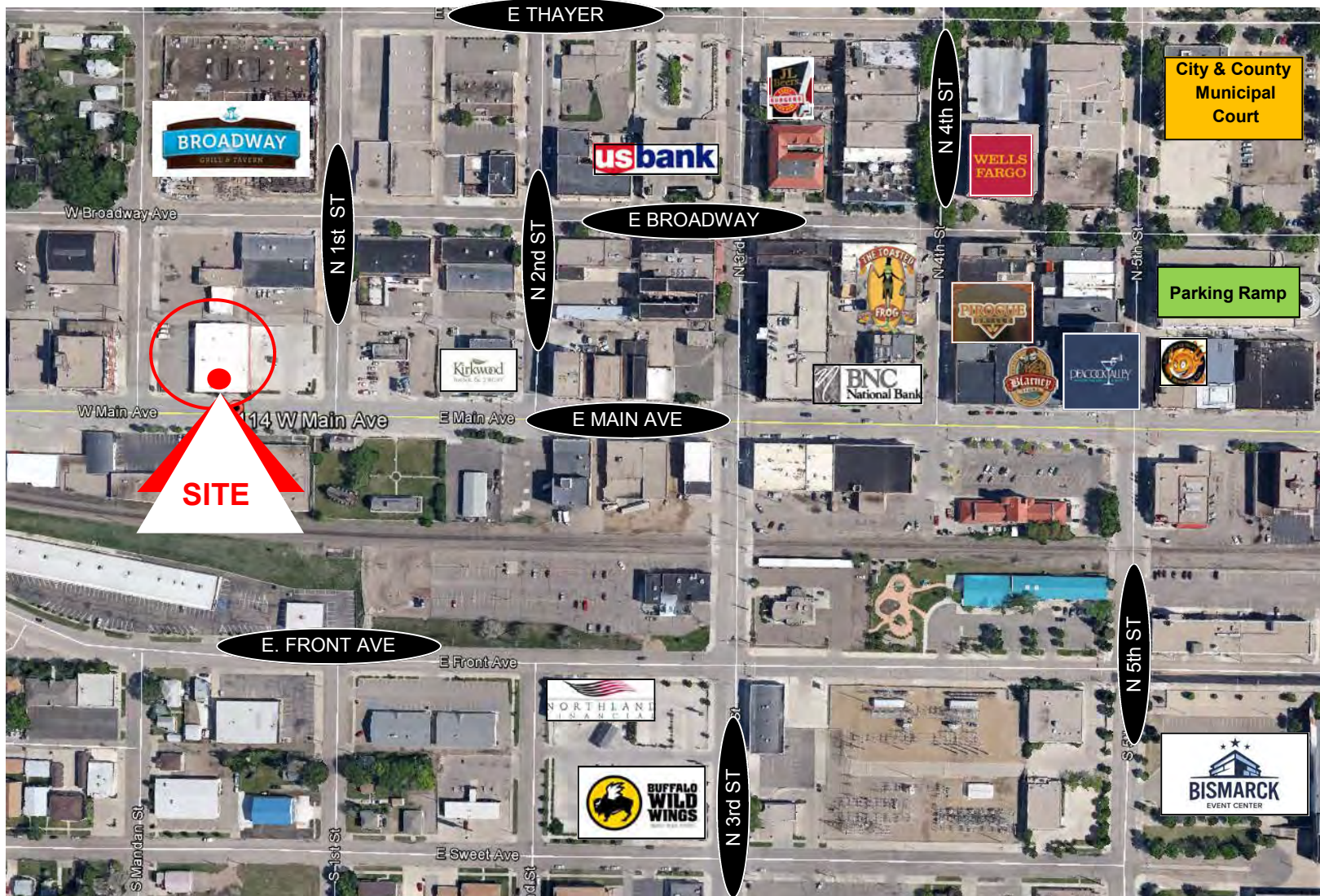
Broker does not guarantee the information describing this property. Interested parties are advised to independently verify the information through personal inspectors or with appropriate professionals.



Kyle Holwagner, CCIM, SIOR
701.400.5373
Kyle@DanielCompanies.com

Kristyn Steckler, Market Coordinator
701.527.0138
Kristyn@DanielCompanies.com

DanielCompanies.com



Walk Score
89

114 East Main Avenue has a Walk Score of 89 out of 100 - Very Walkable so most errands can be accomplished on foot.

Traffic Count: 7,605 - 10,085 Daily



Kyle Holwagner, CCIM, SIOR
 701.400.5373
Kyle@DanielCompanies.com

Kristyn Steckler, Market Coordinator
 701.527.0138
Kristyn@DanielCompanies.com

DanielCompanies.com



DANIEL COMPANIES

The Leader in Commercial Real Estate

Serving commercial real estate clients with unmatched market knowledge, experience, and a well-deserved reputation for integrity. They know the Bismarck-Mandan commercial real estate market better than anyone. This powerful team delivers powerful results.



Bill Daniel, CCIM, Broker
701.220.2455
Bill@DanielCompanies.com



Kyle Holwagner, CCIM, SIOR
701.400.5373
Kyle@DanielCompanies.com



Taylor Daniel, Commercial REALTOR®
701.391.4262
Taylor@DanielCompanies.com

701.223.8488
304 E ROSSER AVE #200
BISMARCK, ND 58501



ICSC CCIM SIOR
INDIVIDUAL MEMBERS

RETAIL • INVESTMENTS • OFFICE • INDUSTRIAL • SITE SELECTION • LEASING • BUILD TO SUIT • BROKERAGE