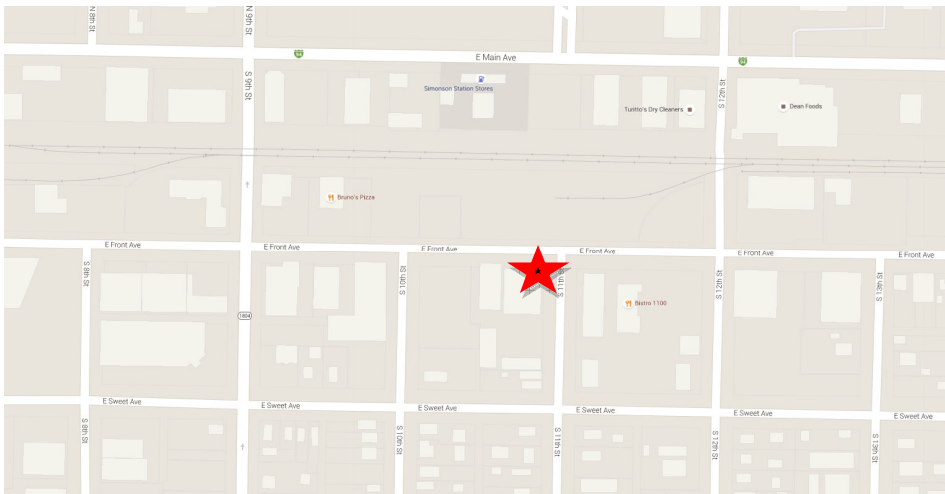




- Lease Price: \$6.00 psf + prorate share utilities (\$2,500 / mo.)
- Space Available: 5,000 sf
- Shop Area: 83' x 49'
- Ceiling Height: 13' 8"
- 14' x 12' Overhead Door
- Floor Drain
- Fan Forced Heat
- Building has fire suppression sprinkler system
- Office Area:
 - 2 Private Offices
 - 1 Restroom
 - 1 Storage Room
 - 1 Storage Mezzanine
- Landlord shall approve Tenant



WAREHOUSE/SHOP/OFFICE MIXED USE
1019 E. Front Ave - Bismarck, ND

Contact Information:

Kyle Holwagner, CCIM, SIOR
701.400.5373
Kyle@DanielCompanies.com

Bill Daniel, CCIM
701.220.2455
Bill@DanielCompanies.com

Regina Crothers, REALTOR®
701.471.3140
Regina@DanielCompanies.com

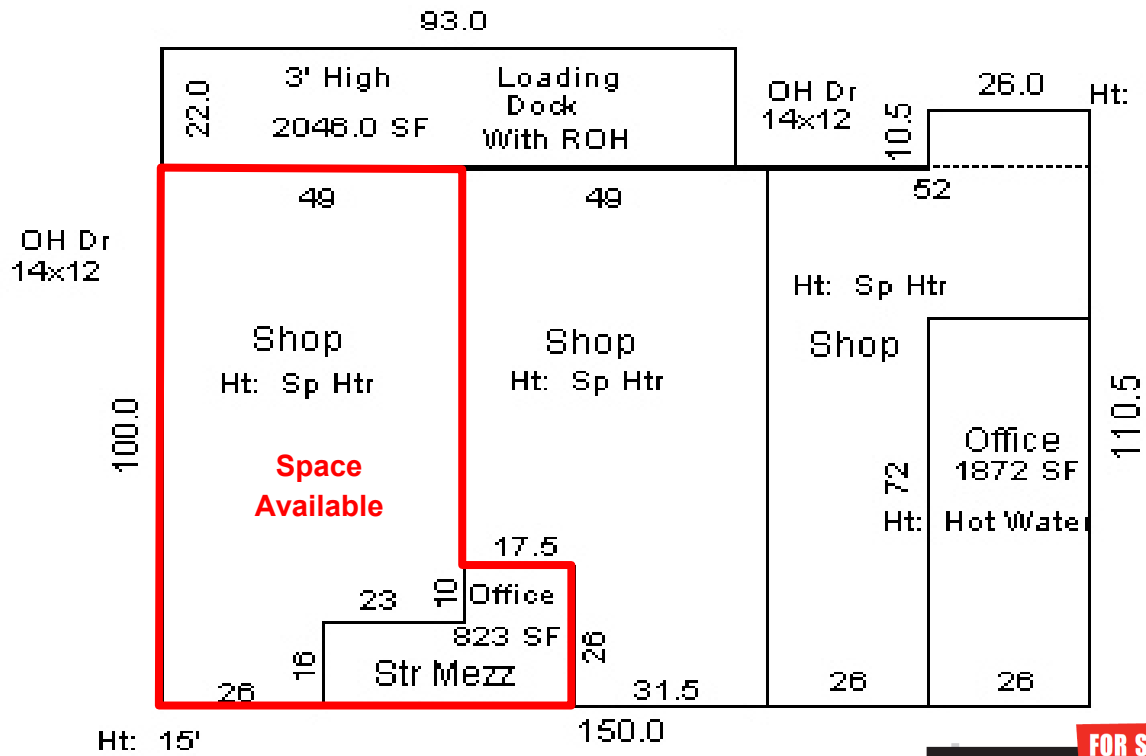
Daniel Companies
304 E Rosser Ave Suite 200
Bismarck ND 58501
701.223.8488
701.223.8860 fax

Broker does not guarantee the information describing this property. Interested parties are advised to independently verify the information through personal inspectors or with appropriate professionals.

DanielCompanies.com

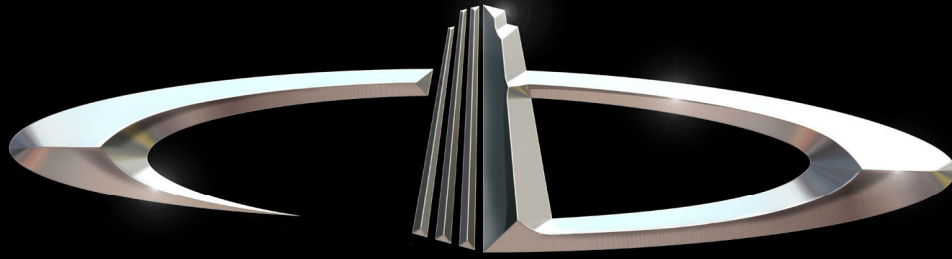


The Leader In Commercial



Broker does not guarantee the information describing this property. Interested parties are advised to independently verify the information through personal inspectors or with appropriate professionals.





DANIEL COMPANIES

The Leader in Commercial Real Estate

Serving commercial real estate customers with unmatched market knowledge, experience, and well-deserved reputation for integrity.

They know the Bismarck-Mandan commercial real estate market better than anyone. This powerful team delivers powerful results.



Bill Daniel, CCIM
220-2455



Kyle Holwagner, CCIM, SIOR
400-5373



Taylor Daniel, REALTOR®
391-4262



Regina Crothers, REALTOR®
471-3140

304 E. Rosser Ave., Suite 200 Bismarck, ND 58501

Office: 701-223-8488 DanielCompanies.com



RETAIL • INVESTMENTS • OFFICE • INDUSTRIAL • SITE SELECTION • LEASING • BUILD TO SUIT • BROKERAGE