

Grand Pacific Center

400 E Broadway Ave Suite 24 - Bismarck, ND

343 sf / \$372 mo. - Full Service



DANIEL COMPANIES
The Leader in Commercial Real Estate

Taylor Daniel | Vice President
Commercial Realtor®
Taylor@DanielCompanies.com

Bill Daniel | President
CCIM, Broker
Bill@DanielCompanies.com

DanielCompanies.com

Executive Summary for Lease

Address:	400 E Broadway Ave Suite 24 - Bismarck, ND
Property Name:	Grand Pacific Center
Lease Term:	Minimum 3 Years
Lease Rate:	\$13.00 psf / \$372 mo.
Approximate SF:	343 sf
Parking:	Street and ramp parking
Tenant Responsibilities:	Parking, Internet, and Phone

Broker does not guarantee the information describing this property. Interested parties are advised to independently verify the information through personal inspectors or with appropriate professionals.



400E Broadway Ave. has a Walk Score of 89 out of 100. Very Walkable - Most errands can be accomplished on foot.

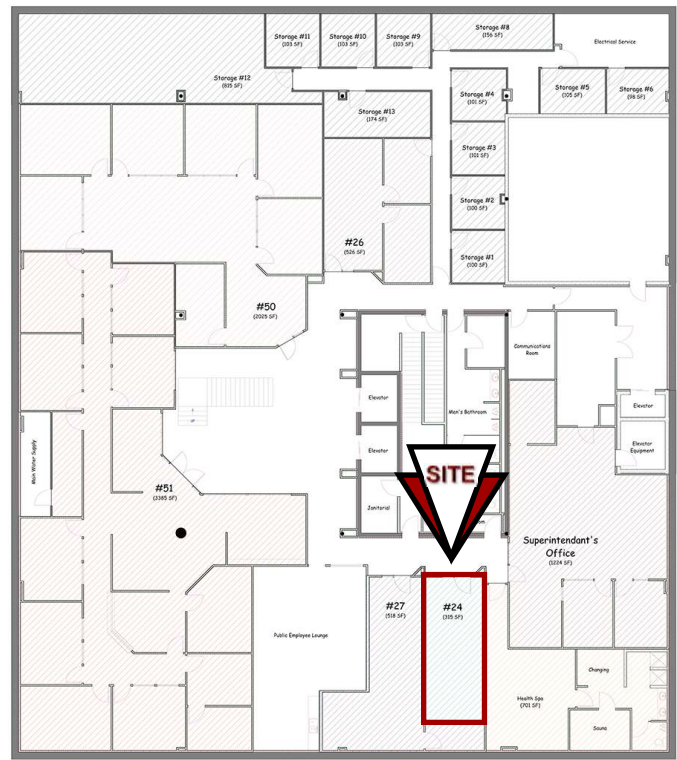
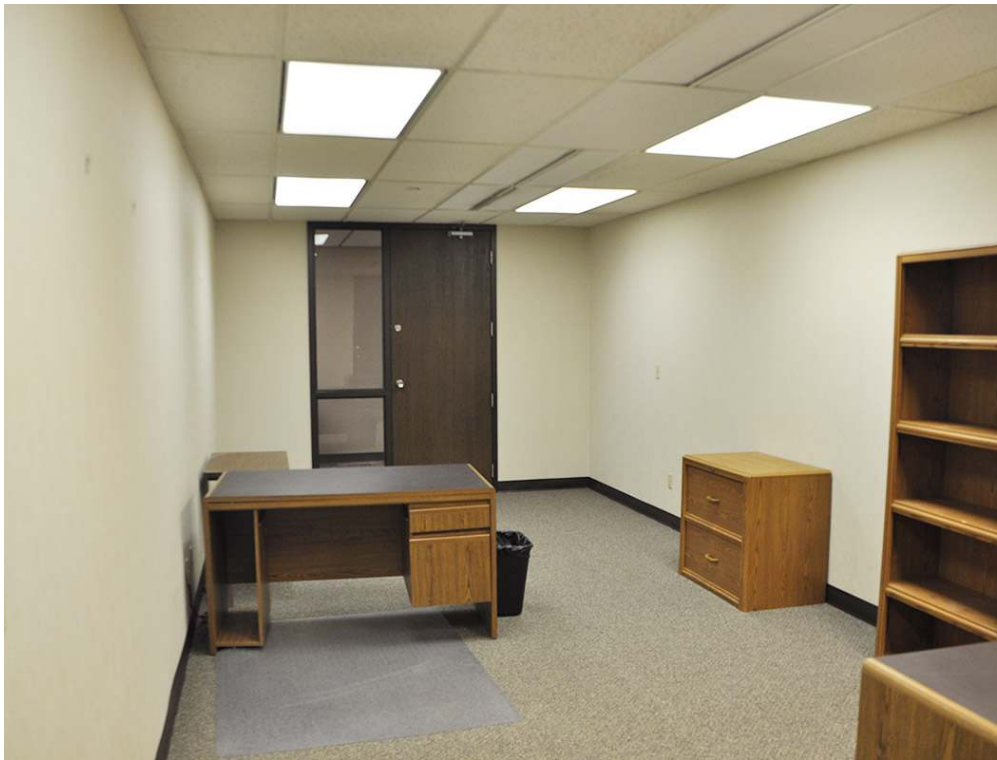
	.5 MILES	1 MILES	3 MILES
2020 POPULATION			
	2,573	13,734	64,107
DAYTIME POPULATION			
	13,222	26,792	77,342
BUSINESSES			
	794	1,432	3,916
EMPLOYEES			
	11,760	23,668	57,794
HOUSEHOLD INCOME			
	\$46,613	\$63,097	\$80,473



Taylor Daniel | Vice President
 Commercial Realtor®
Taylor@DanielCompanies.com

Bill Daniel | President
 CCIM, Broker
Bill@DanielCompanies.com

DanielCompanies.com





DANIEL COMPANIES

The Leader in Commercial Real Estate



**Bill Daniel, CCIM | President
Commercial Broker**

701.220.2455

Bill@DanielCompanies.com



**Taylor Daniel | Vice President
Commercial Realtor®**

701.391.4262

Taylor@DanielCompanies.com

Serving commercial real estate clients with unmatched market knowledge, experience and a well-deserved reputation for integrity. They know the Bismarck-Mandan commercial real estate market better than anyone.

Powerful Team. Powerful Process. Powerful Results.