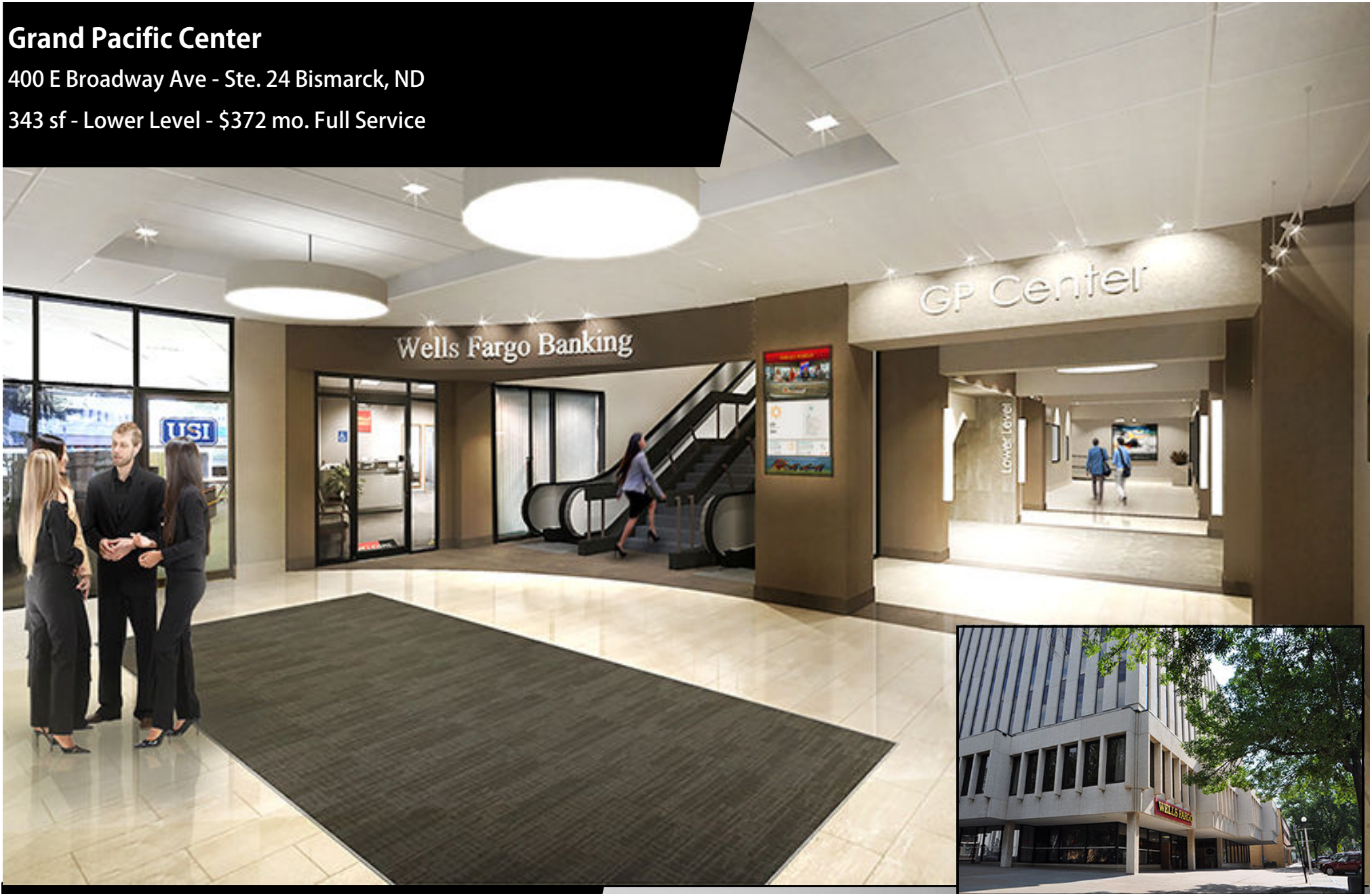


# Grand Pacific Center

400 E Broadway Ave - Ste. 24 Bismarck, ND

343 sf - Lower Level - \$372 mo. Full Service



**Taylor Daniel, Commercial REALTOR®**  
701.391.4262  
[Taylor@DanielCompanies.com](mailto:Taylor@DanielCompanies.com)

**Bill Daniel, CCIM, Broker**  
701.220.2455  
[Bill@DanielCompanies.com](mailto:Bill@DanielCompanies.com)

[DanielCompanies.com](http://DanielCompanies.com)

## Potential Services

- Professional Services
- Government Offices
- Accounting Firm
- Legal Offices
- Medical Offices
- Engineering Firm

## Located Downtown Bismarck Near

- Federal Building
- US Post Office
- Banks
- Professional Buildings
- City / County Building
- Burleigh County Courthouse
- Restaurants
- Bismarck Civic & Convention Center
- Kirkwood Mall
- Wells Fargo Building
- Sanford Health

- In the heart of downtown Bismarck
- Across the street from City Parking Ramp - \$56 / mo. per space
- Walking distance to many downtown restaurants / bars
- Easy access to Bismarck Event Center and Kirkwood mall
- Tenant provides financial, credit review required

## Lease: \$372 per mo.

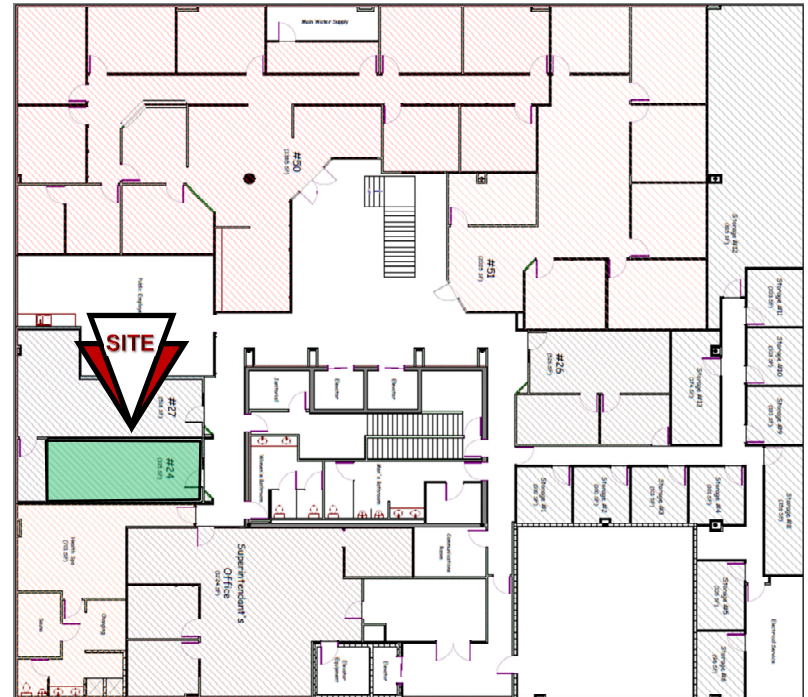
- Lease Space: 343 sf available on Lower Level
- 3 Year Lease
- Full Service Lease
- Shared Conference Room on 3rd Floor
- Professional & Spacious Lobby
- Two (2) Elevators & Escalators
- Great Location and View - Corner of N 4th St and Broadway Ave
- Near City Parking Ramps
- Vacant & Available Now



Taylor Daniel, Commercial REALTOR®  
701.391.4262  
[Taylor@DanielCompanies.com](mailto:Taylor@DanielCompanies.com)

Bill Daniel, CCIM, Broker  
701.220.2455  
[Bill@DanielCompanies.com](mailto:Bill@DanielCompanies.com)







# DANIEL COMPANIES

The Leader in Commercial Real Estate

Serving commercial real estate clients with unmatched market knowledge, experience, and a well-deserved reputation for integrity. They know the Bismarck-Mandan commercial real estate market better than anyone. This powerful team delivers powerful results.



**Bill Daniel, CCIM, Broker**  
701.220.2455  
Bill@DanielCompanies.com



**Kyle Holwagner, CCIM, SIOR**  
701.400.5373  
Kyle@DanielCompanies.com



**Taylor Daniel, Commercial REALTOR®**  
701.391.4262  
Taylor@DanielCompanies.com

701.223.8488  
304 E ROSSER AVE #200  
BISMARCK, ND 58501



ICSC CCIM SIOR  
INDIVIDUAL MEMBERS

RETAIL • INVESTMENTS • OFFICE • INDUSTRIAL • SITE SELECTION • LEASING • BUILD TO SUIT • BROKERAGE