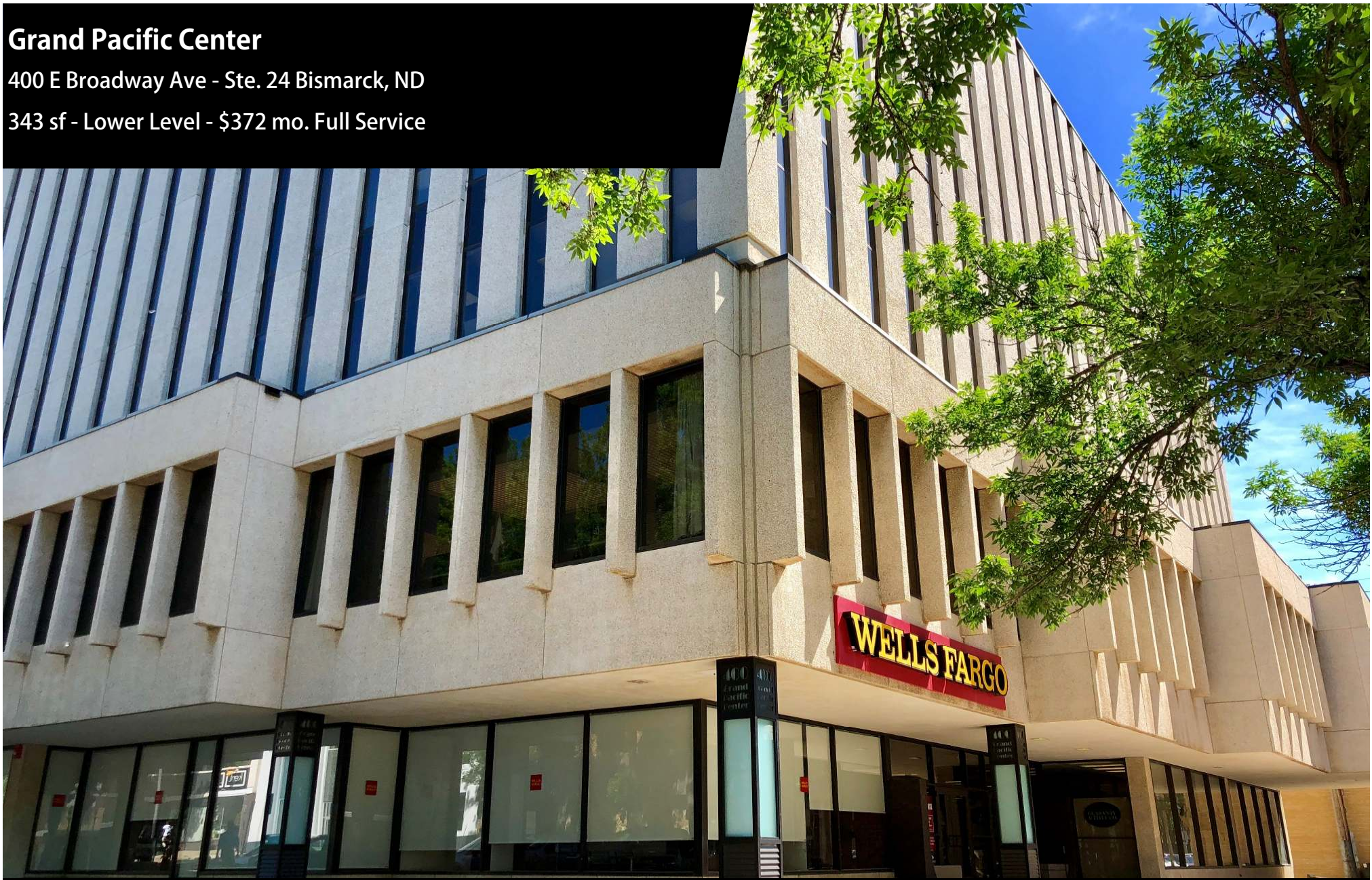


Grand Pacific Center

400 E Broadway Ave - Ste. 24 Bismarck, ND

343 sf - Lower Level - \$372 mo. Full Service



Taylor Daniel | Vice President
Commercial Realtor®
Taylor@DanielCompanies.com

Bill Daniel | President
CCIM, Broker
Bill@DanielCompanies.com

DanielCompanies.com

Potential Services

- Professional Services
- Government Offices
- Accounting Firm
- Legal Offices
- Medical Offices
- Engineering Firm

Located Downtown Bismarck Near

- Federal Building
- US Post Office
- Banks
- Professional Buildings
- City / County Building
- Burleigh County Courthouse
- Restaurants
- Bismarck Civic & Convention Center
- Kirkwood Mall
- Wells Fargo Building
- Sanford Health

- In the heart of downtown Bismarck
- Across the street from City Parking Ramp - \$56 / mo. per space
- Walking distance to many downtown restaurants / bars
- Easy access to Bismarck Event Center and Kirkwood mall
- Tenant provides financial, credit review required

Lease: \$372 per mo.

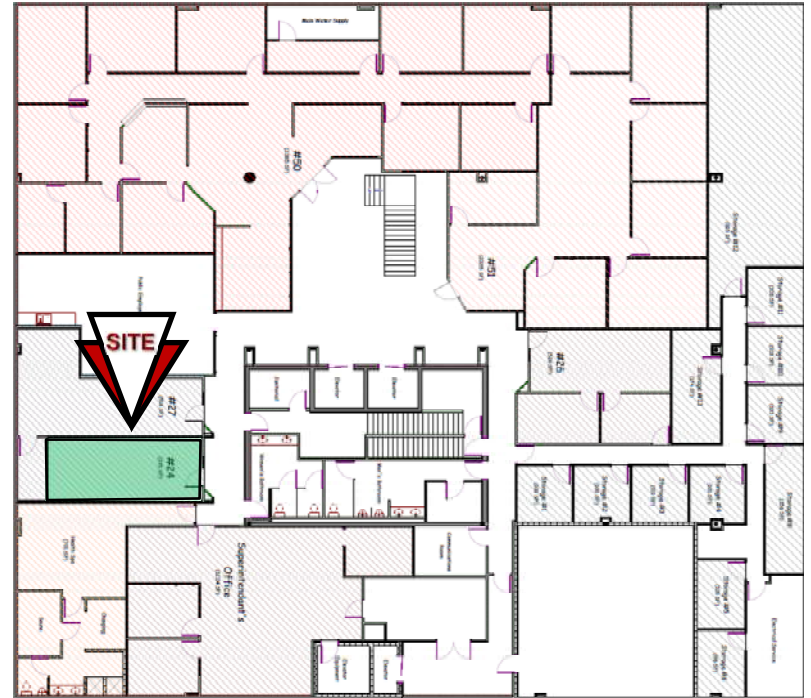
- Lease Space: 343 sf available on Lower Level
- 3 Year Lease
- Full Service Lease
- Shared Conference Room on 3rd Floor
- Professional & Spacious Lobby
- Two (2) Elevators & Escalators
- Great Location and View - Corner of N 4th St and Broadway Ave
- Near City Parking Ramps
- Vacant & Available Now



Taylor Daniel | Vice President
Commercial Realtor®
Taylor@DanielCompanies.com

Bill Daniel | President
CCIM, Broker
Bill@DanielCompanies.com

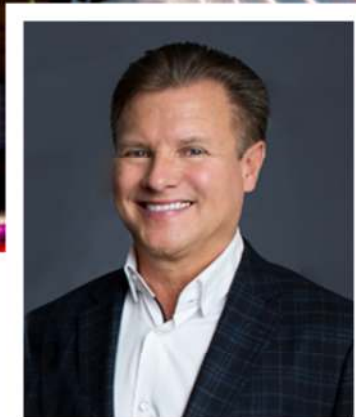
DanielCompanies.com





DANIEL COMPANIES

The Leader in Commercial Real Estate



**Bill Daniel, CCIM | President
Commercial Broker**

701.220.2455
Bill@DanielCompanies.com



**Taylor Daniel | Vice President
Commercial Realtor®**

701.391.4262
Taylor@DanielCompanies.com

Serving commercial real estate clients with unmatched market knowledge, experience and a well-deserved reputation for integrity. They know the Bismarck-Mandan commercial real estate market better than anyone.

Powerful Team. Powerful Process. Powerful Results.