

Investment Property

1300 Tacoma Ave

Bismarck, ND



Kyle Holwagner, CCIM, SIOR

701.400.5373

Kyle@DanielCompanies.com

Kristyn Steckler, Market Coordinator

701.527.0138

Kristyn@DanielCompanies.com

DanielCompanies.com

Occupancy Details

- 4,200 sf DanceWorX Studio lease through Sept. 1, 2021; lease revenue details to be provided upon inquiry
- 6,000 sf Owner occupied. Seller may consider leasing from Buyer or moving the business from subject property.

Area Businesses

- Epic Technologies
- Race Day Lube & Wash
- JZ Trend Academy / Paul Mitchell
- Cottonwood Apartments
- Green Light Systems
- Sports Page
- Ulteig
- Dakota Communications
- Dakota Fence
- Runway Express Gas Station
- Kirkwood Bank & Trust



Price: \$1,200,000

- Building Size: 10,201 sf
4,200 sf Tenant Lease
6,000 sf Owner Occupied
- Lot Size: 1.16 Ac / 50,699 sf
- Built in 2014
- Zoned MA Light Industrial
- Offices, Conference Room, Break Room, Receiving Area
- Overhead Door w/ Garage
- Large Surface Parking Lot
- Many Upgrades
- PID #: 0637-001-020
- Taxes: \$16,345 (2017)
- Specials: \$4,987 Installments
\$21,107 Balance

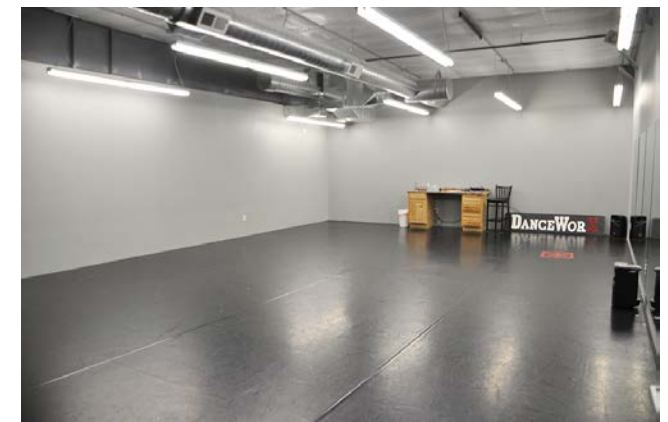
Broker does not guarantee the information describing this property. Interested parties are advised to independently verify the information through personal inspectors or with



Kyle Holwagner, CCIM, SIOR
701.400.5373
Kyle@DanielCompanies.com

Kristyn Steckler, Market Coordinator
701.527.0138
Kristyn@DanielCompanies.com

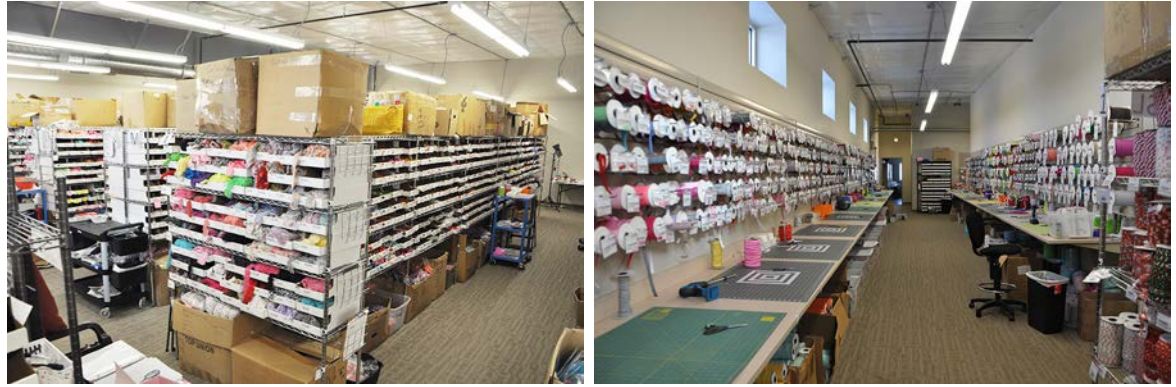
DanielCompanies.com



Kyle Holwagner, CCIM, SIOR
701.400.5373
Kyle@DanielCompanies.com

Kristyn Steckler, Market Coordinator
701.527.0138
Kristyn@DanielCompanies.com

DanielCompanies.com

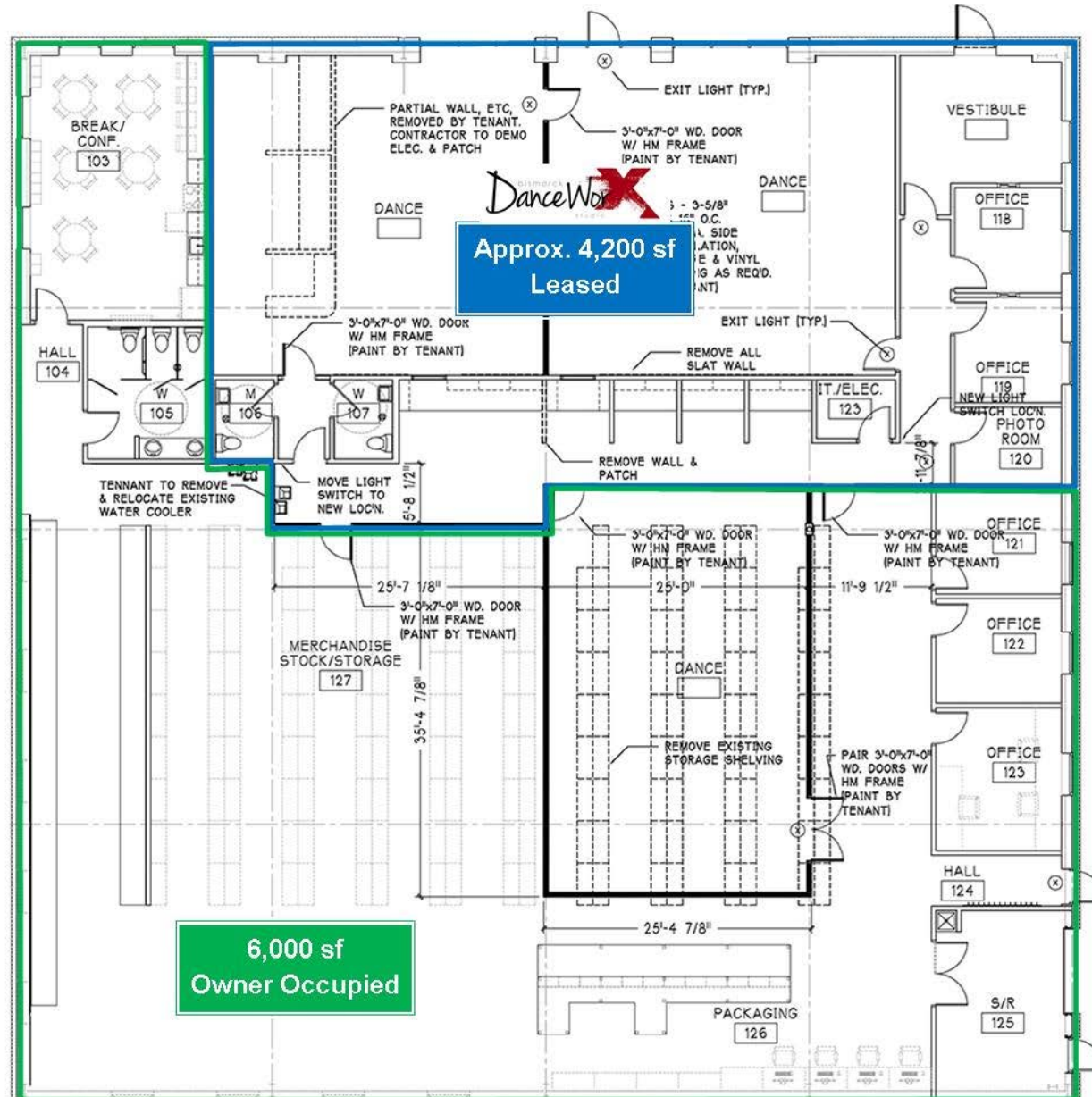


Kyle Holwagner, CCIM, SIOR
701.400.5373
Kyle@DanielCompanies.com

Kristyn Steckler, Market Coordinator
701.527.0138
Kristyn@DanielCompanies.com

DanielCompanies.com

Remodel Floor Plan



Kyle Holwagner, CCIM, SIOR
701.400.5373
Kyle@DanielCompanies.com

Kristyn Steckler, Market Coordinator
701.527.0138
Kristyn@DanielCompanies.com





JZ Trend Academy
PAUL MITCHELL
PARTNER SCHOOL



Kyle Holwagner, CCIM, SIOR
701.400.5373
Kyle@DanielCompanies.com

Kristyn Steckler, Market Coordinator
701.527.0138
Kristyn@DanielCompanies.com

DanielCompanies.com



DANIEL COMPANIES

The Leader in Commercial Real Estate

Serving commercial real estate clients with unmatched market knowledge, experience, and a well-deserved reputation for integrity. They know the Bismarck-Mandan commercial real estate market better than anyone. This powerful team delivers powerful results.



Bill Daniel, CCIM, Broker
701.220.2455
Bill@DanielCompanies.com



Kyle Holwagner, CCIM, SIOR
701.400.5373
Kyle@DanielCompanies.com



Taylor Daniel, Commercial REALTOR®
701.391.4262
Taylor@DanielCompanies.com

701.223.8488
304 E ROSSER AVE #200
BISMARCK, ND 58501



ICSC CCIM SIOR
INDIVIDUAL MEMBERS

RETAIL • INVESTMENTS • OFFICE • INDUSTRIAL • SITE SELECTION • LEASING • BUILD TO SUIT • BROKERAGE