

Office Suites

301 1st St. NE

Mandan, ND



Kyle Holwagner, CCIM, SIOR
701.400.5373
Kyle@DanielCompanies.com

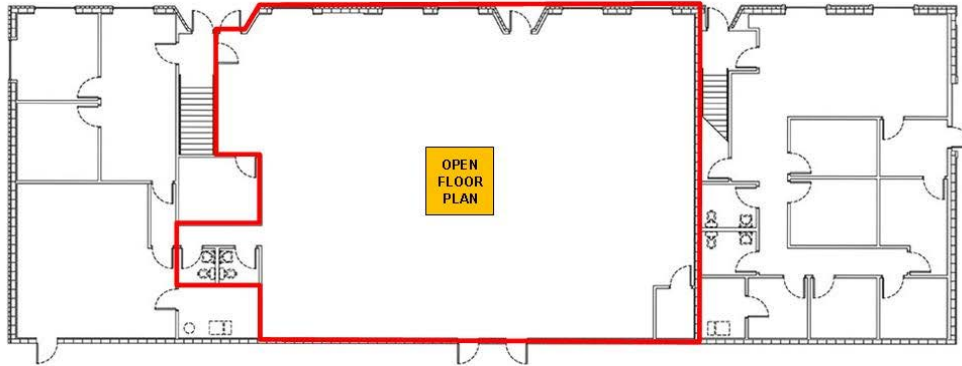
Kristyn Steckler, Market Coordinator
701.527.0138
Kristyn@DanielCompanies.com

DanielCompanies.com

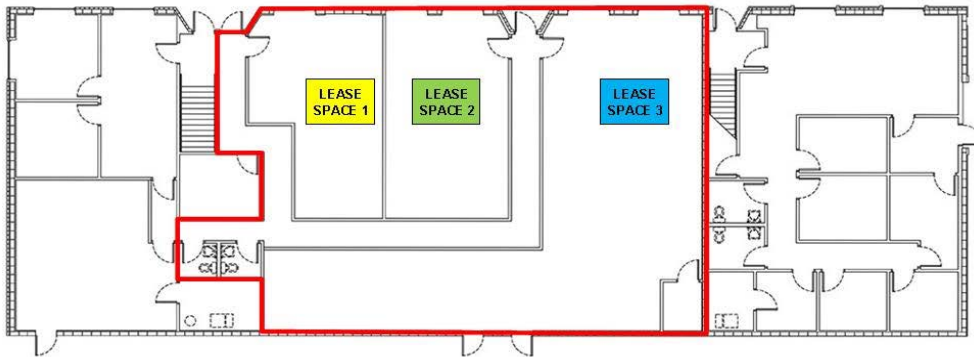
Building Information

PRICE	LOT SIZE	TAXES	SPECIALS	INSTALLMENT	PARCEL ID
\$875,000	13,700 sf	\$8,503.92	\$8,075.19	\$3,186.34	65-2267000

1st Floor Layout



2nd Floor Layout



Sale: \$875,000 - 13,700 sf

Lease \$8.50 psf - 6,175 sf

**Lease can be subdivided

- Full Services less Janitorial
- Open Floor Plan - Main Floor
- Easy Access
- North Facing Windows
- Good Signage Available
- Ample Parking
- One Block off Main St.

Area Businesses

- Strawberry Restaurant & Bar
- Butcher Block Meats
- Family Dollar
- O'Reilly Auto Parts
- Papa Murphy's
- Pizza Ranch
- M & H
- Verizon Wireless
- Hardee's
- Subway
- Wenck & Associates Gas

Potential Uses

- Professional Services
- Medical Office
- Legal Office
- Accounting Firm
- Government Offices
- Engineering Firm - to be approved
- Flex Retail
- Health / Fitness
- Salon / Tanning
- Training Center

Broker does not guarantee the information describing this property. Interested parties are advised to independently verify the information through personal inspectors or with appropriate professionals.



Kyle Holwagner, CCIM, SIOR
 701.400.5373
Kyle@DanielCompanies.com

Kristyn Steckler, Market Coordinator
 701.527.0138
Kristyn@DanielCompanies.com

DanielCompanies.com



Mandan Municipal
Golf Course



Kyle Holwagner, CCIM, SIOR
701.400.5373
Kyle@DanielCompanies.com

Kristyn Steckler, Market Coordinator
701.527.0138
Kristyn@DanielCompanies.com

DanielCompanies.com



DANIEL COMPANIES

The Leader in Commercial Real Estate

Serving commercial real estate clients with unmatched market knowledge, experience, and a well-deserved reputation for integrity. They know the Bismarck-Mandan commercial real estate market better than anyone. This powerful team delivers powerful results.



Bill Daniel, CCIM, Broker
701.220.2455
Bill@DanielCompanies.com



Kyle Holwagner, CCIM, SIOR
701.400.5373
Kyle@DanielCompanies.com



Taylor Daniel, Commercial REALTOR®
701.391.4262
Taylor@DanielCompanies.com

701.223.8488
304 E ROSSER AVE #200
BISMARCK, ND 58501



ICSC CCIM SIOR
INDIVIDUAL MEMBERS

RETAIL • INVESTMENTS • OFFICE • INDUSTRIAL • SITE SELECTION • LEASING • BUILD TO SUIT • BROKERAGE