

Gateway Professional Center

1050 E Interstate Ave. Suite 122 - Bismarck, ND

2,004 sf Main Floor @ \$16.00 psf = \$2,672 / mo.



Taylor Daniel | Vice President
Commercial Realtor®
Taylor@DanielCompanies.com

Bill Daniel | President
CCIM, Broker
Bill@DanielCompanies.com

DanielCompanies.com

Lease Incentive!

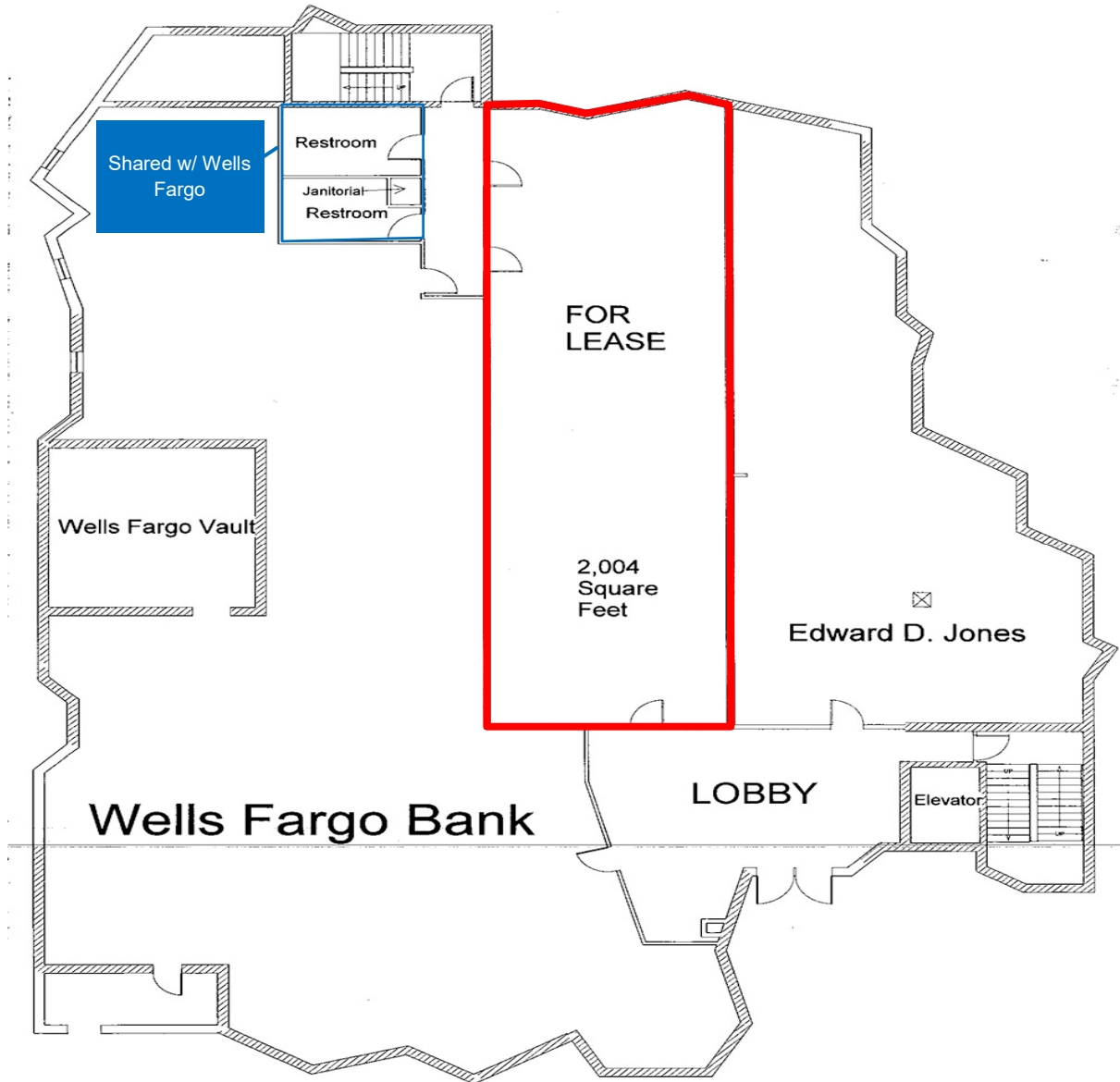
Landlord will contribute \$20,000 towards tenant buildout on long-term lease.

Property Information:

- Easy access to many restaurants and shopping
- Easy access of I-94 & State Street.
- Includes 1/2 restroom space shared w/ Wells Fargo
- * **Owner will provide new floor covering and sound proofing**

Potential Uses:

- Professional Services
- Government Offices
- Accounting Firm
- Legal Offices
- Medical Offices (except Chiropractic)
- Engineering Firm
- No 'Finance' type Tenant Use





Broker does not guarantee the information describing this property. Interested parties are advised to independently verify the information through personal inspectors or with appropriate professionals.



DANIEL COMPANIES

The Leader in Commercial Real Estate



**Bill Daniel, CCIM | President
Commercial Broker**

701.220.2455

Bill@DanielCompanies.com



**Taylor Daniel | Vice President
Commercial Realtor®**

701.391.4262

Taylor@DanielCompanies.com

Serving commercial real estate clients with unmatched market knowledge, experience and a well-deserved reputation for integrity.
They know the Bismarck-Mandan commercial real estate market better than anyone.

Powerful Team. Powerful Process. Powerful Results.