

Professional / Medical Office Space

1033 Basin Ave, Suite A

Bismarck, ND



Kyle Holwagner, CCIM, SIOR

701.400.5373

Kyle@DanielCompanies.com

Kristyn Steckler, Market Coordinator

701.527.0138

Kristyn@DanielCompanies.com

DanielCompanies.com

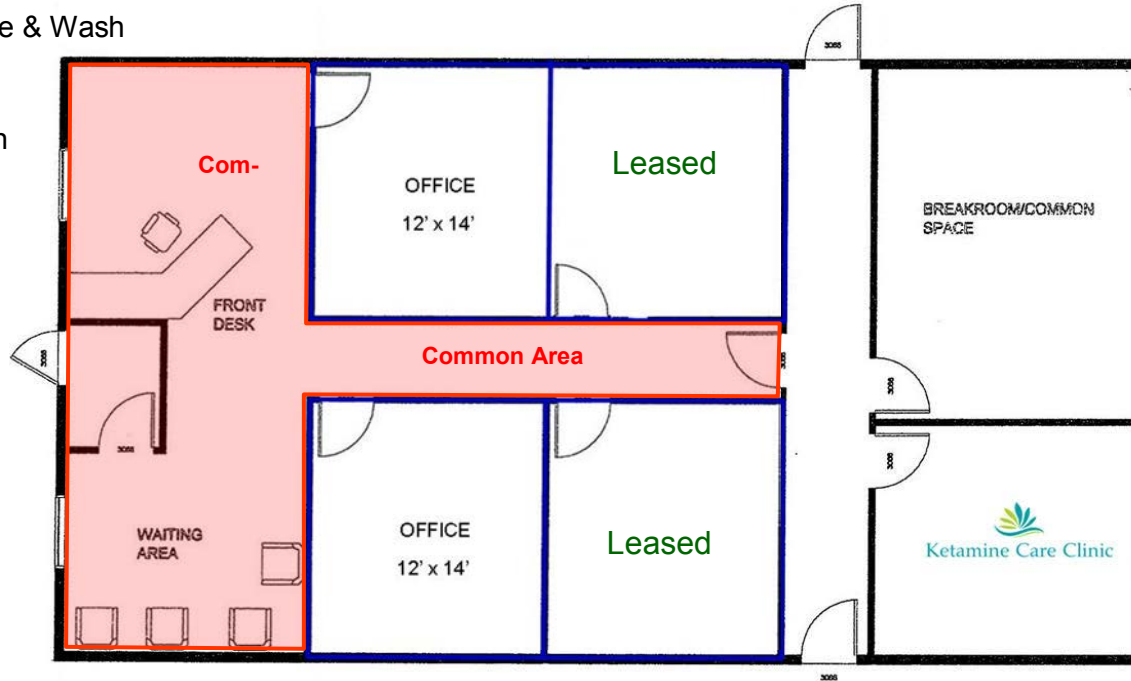
Area Businesses:

- Healthway's
- Sanford Health
- Bismarck Rental
- Dakota Fence
- Kirkwood Bank & Trust
- Great Northern Energy
- Bismarck Municipal Airport
- Sports Page
- Race Day Lube & Wash
- Wells Fargo
- Sanford Health

Operating Expenses Include:

- All Utilities
- Interior Janitorial
- Gas & Electricity
- Liability Insurance
- Exterior Maintenance
- Snow Removal & Lawn Care

**Operation Expense can be adjusted annually*



Individual Office Suites w/ Waiting Room - \$550 mo.

- Full Service less Janitorial
Operation Cost may be Adjusted
Annually
- One year lease term
- Walk-in Entrance
- Private Offices / Exam Rooms
- Built-in Reception Area
- Lobby / Waiting Area
- Shared Kitchen, Break Room, &
ADA Restrooms
- Ample Off-Street Parking
- Great South Bismarck Location

Broker does not guarantee the information describing this property. Interested parties are advised to independently verify the information through personal inspectors or with appropriate professionals.



Kyle Holwagner, CCIM, SIOR
701.400.5373
Kyle@DanielCompanies.com

Kristyn Steckler, Market Coordinator
701.527.0138
Kristyn@DanielCompanies.com

DanielCompanies.com

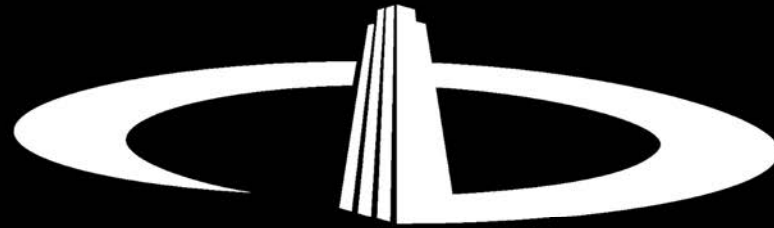
Area Map



Kyle Holwagner, CCIM, SIOR
701.400.5373
Kyle@DanielCompanies.com

Kristyn Steckler, Market Coordinator
701.527.0138
Kristyn@DanielCompanies.com

DanielCompanies.com



DANIEL COMPANIES

The Leader in Commercial Real Estate

Serving commercial real estate clients with unmatched market knowledge, experience, and a well-deserved reputation for integrity. They know the Bismarck-Mandan commercial real estate market better than anyone. This powerful team delivers powerful results.



Bill Daniel, CCIM, Broker
701.220.2455
Bill@DanielCompanies.com



Kyle Holwagner, CCIM, SIOR
701.400.5373
Kyle@DanielCompanies.com



Taylor Daniel, Commercial REALTOR®
701.391.4262
Taylor@DanielCompanies.com

701.223.8488
304 E ROSSER AVE #200
BISMARCK, ND 58501



ICSC CCIM SIOR
INDIVIDUAL MEMBERS

RETAIL • INVESTMENTS • OFFICE • INDUSTRIAL • SITE SELECTION • LEASING • BUILD TO SUIT • BROKERAGE