

# Industrial Warehouse / Shop

1244 Beech Ave.

Bismarck, ND



**Kyle Holwagner, CCIM, SIOR**  
701.400.5373

[Kyle@DanielCompanies.com](mailto:Kyle@DanielCompanies.com)

**Kristyn Steckler, Market Coordinator**  
701.527.0138

[Kristyn@DanielCompanies.com](mailto:Kristyn@DanielCompanies.com)

[DanielCompanies.com](http://DanielCompanies.com)

## Potential Uses

- Warehouse Distribution
- Storage
- Manufacturing
- Assembly
- Service



**SALE - \$699,900**

- Building: 12,000 sf
- Office: 800 sf w/ Mezzanine
- Warehouse: 11,200 sf
- 18' Ceiling Height
- 14' x 14' Overhead Door
- 8' x 9' Dock Door
- Restroom
- Floor Drain
- Well, Septic Tank
- New Lighting
- New Unit Heaters

Broker does not guarantee the information describing this property. Interested parties are advised to independently verify the information through personal inspectors or with appropriate professionals.

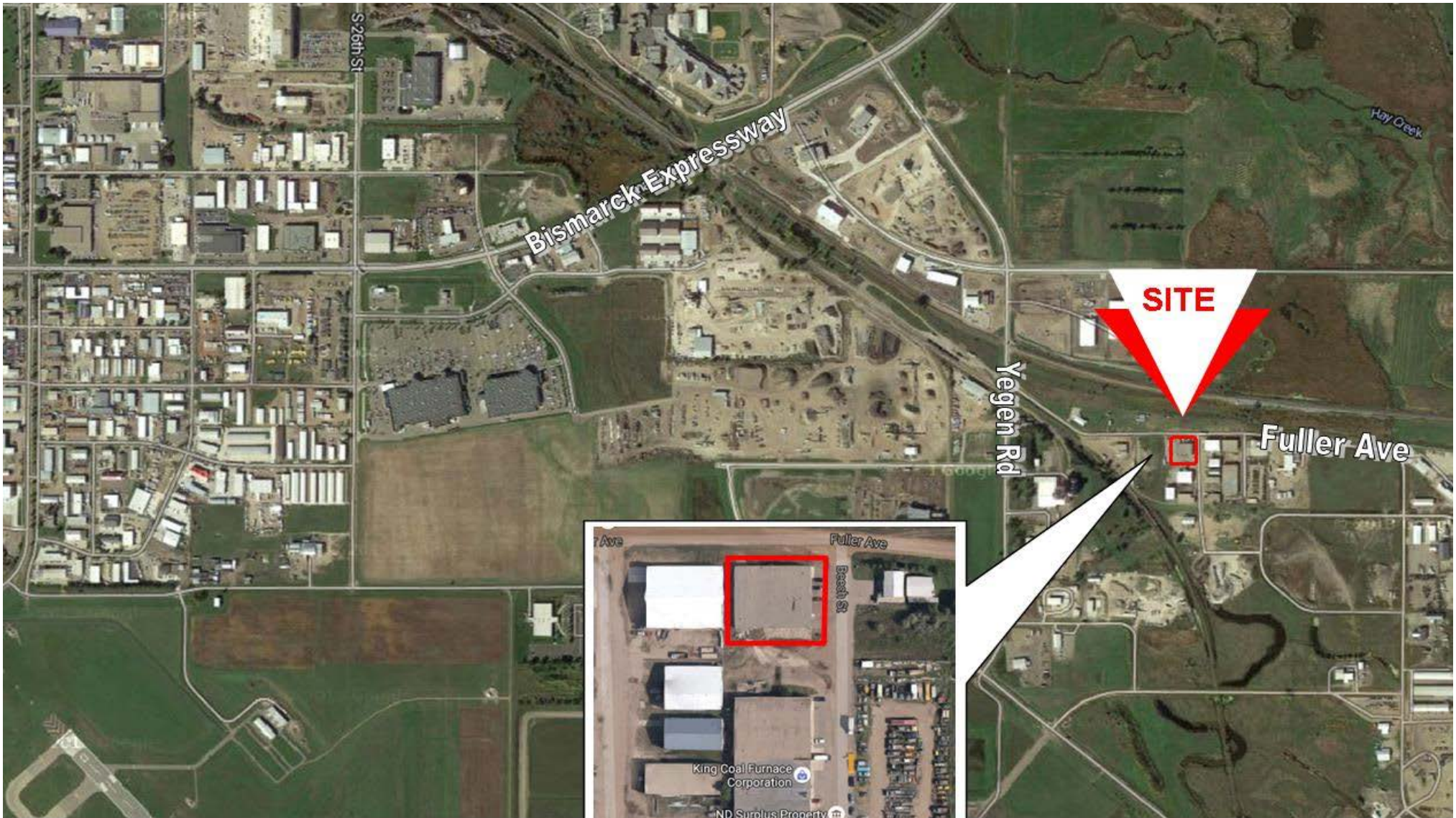


**Kyle Holwagner, CCIM, SIOR**  
701.400.5373  
[Kyle@DanielCompanies.com](mailto:Kyle@DanielCompanies.com)

**Kristyn Steckler, Market Coordinator**  
701.527.0138  
[Kristyn@DanielCompanies.com](mailto:Kristyn@DanielCompanies.com)

**DanielCompanies.com**





Kyle Holwagner, CCIM, SIOR  
701.400.5373

[Kyle@DanielCompanies.com](mailto:Kyle@DanielCompanies.com)

Kristyn Steckler, Market Coordinator  
701.527.0138

[Kristyn@DanielCompanies.com](mailto:Kristyn@DanielCompanies.com)

[DanielCompanies.com](http://DanielCompanies.com)



# DANIEL COMPANIES

The Leader in Commercial Real Estate

Serving commercial real estate clients with unmatched market knowledge, experience, and a well-deserved reputation for integrity. They know the Bismarck-Mandan commercial real estate market better than anyone. This powerful team delivers powerful results.



**Bill Daniel, CCIM, Broker**  
701.220.2455  
Bill@DanielCompanies.com



**Kyle Holwagner, CCIM, SIOR**  
701.400.5373  
Kyle@DanielCompanies.com



**Taylor Daniel, Commercial REALTOR®**  
701.391.4262  
Taylor@DanielCompanies.com

701.223.8488  
304 E ROSSER AVE #200  
BISMARCK, ND 58501



ICSC CCIM SIOR  
INDIVIDUAL MEMBERS

RETAIL • INVESTMENTS • OFFICE • INDUSTRIAL • SITE SELECTION • LEASING • BUILD TO SUIT • BROKERAGE