

Industrial Warehouse / Shop

1244 Beech St. - Bismarck, ND

\$699,900



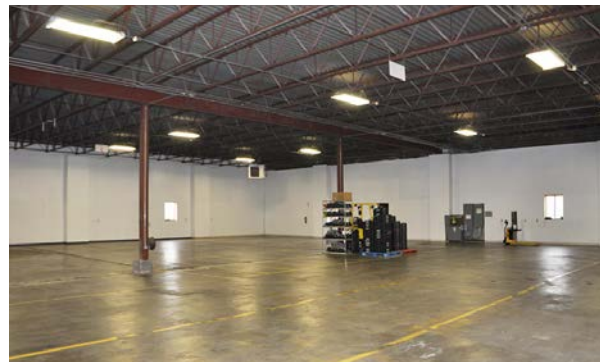
Kyle Holwagner, CCIM, SIOR
701.400.5373
Kyle@DanielCompanies.com

Kristyn Steckler, Senior Client Coordinator
701.527.0138
Kristyn@DanielCompanies.com

DanielCompanies.com

Potential Uses

- Warehouse Distribution
- Storage
- Manufacturing
- Assembly
- Service



SALE - \$699,900

- Building: 12,000 sf
- Office: 800 sf w/ Mezzanine
- Warehouse: 11,200 sf
- 18' Ceiling Height
- 14' x 14' Overhead Door
- 8' x 9' Dock Door
- Restroom
- Floor Drain
- Well, Septic Tank
- New Lighting
- New Unit Heaters
- Taxes 2017: \$2,525.16
- Specials 2017: None

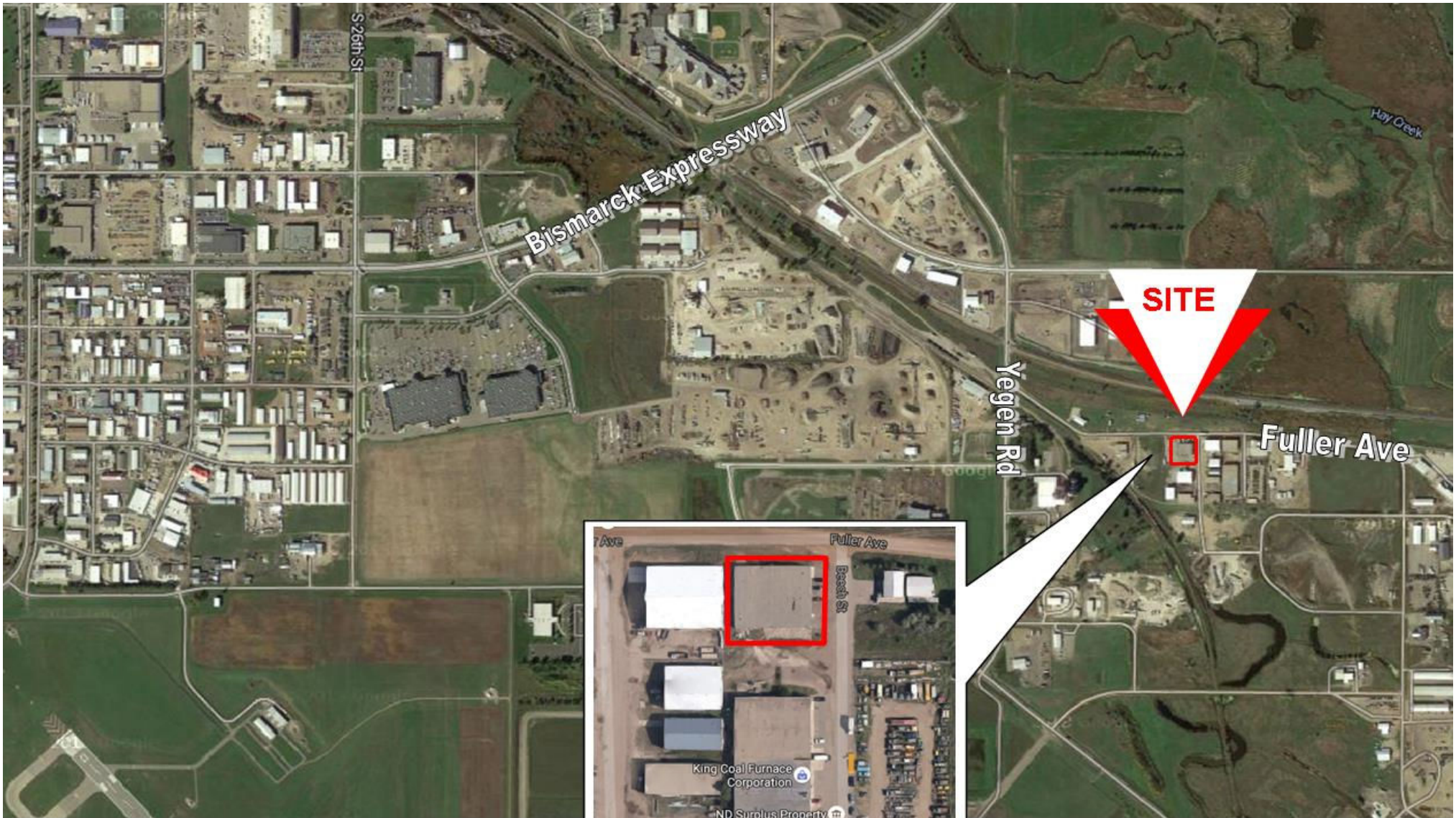
Broker does not guarantee the information describing this property. Interested parties are advised to independently verify the information through personal inspectors or with appropriate professionals.



Kyle Holwagner, CCIM, SIOR
701.400.5373
Kyle@DanielCompanies.com

Kristyn Steckler, Senior Client Coordinator
701.527.0138
Kristyn@DanielCompanies.com

DanielCompanies.com



Kyle Holwagner, CCIM, SIOR
701.400.5373
Kyle@DanielCompanies.com

Kristyn Steckler, Senior Client Coordinator
701.527.0138
Kristyn@DanielCompanies.com

DanielCompanies.com



DANIEL COMPANIES

The Leader in Commercial Real Estate



Bill Daniel
CCIM, Broker

701.220.2455
Bill@DanielCompanies.com



Kyle Holwagner
CCIM, SIOR

701.400.5373
Kyle@DanielCompanies.com



Taylor Daniel
Commercial REALTOR®

701.391.4262
Taylor@DanielCompanies.com

Serving commercial real estate clients with unmatched market knowledge, experience and a well-deserved reputation for integrity. They know the Bismarck-Mandan commercial real estate market better than anyone.

Powerful Team. Powerful Process. Powerful Results.

Industrial Warehouse / Shop

1244 Beech St. - Bismarck, ND

\$699,900



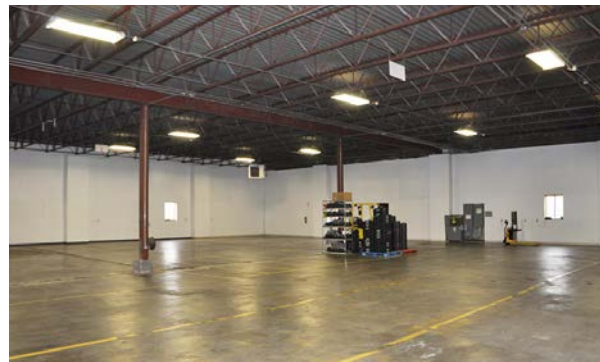
Kyle Holwagner, CCIM, SIOR
701.400.5373
Kyle@DanielCompanies.com

Kristyn Steckler, Senior Client Coordinator
701.527.0138
Kristyn@DanielCompanies.com

DanielCompanies.com

Potential Uses

- Warehouse Distribution
- Storage
- Manufacturing
- Assembly
- Service



SALE - \$699,900

- Building: 12,000 sf
- Office: 800 sf w/ Mezzanine
- Warehouse: 11,200 sf
- 18' Ceiling Height
- 14' x 14' Overhead Door
- 8' x 9' Dock Door
- Restroom
- Floor Drain
- Well, Septic Tank
- New Lighting
- New Unit Heaters
- Taxes 2017: \$2,525.16
- Specials 2017: None

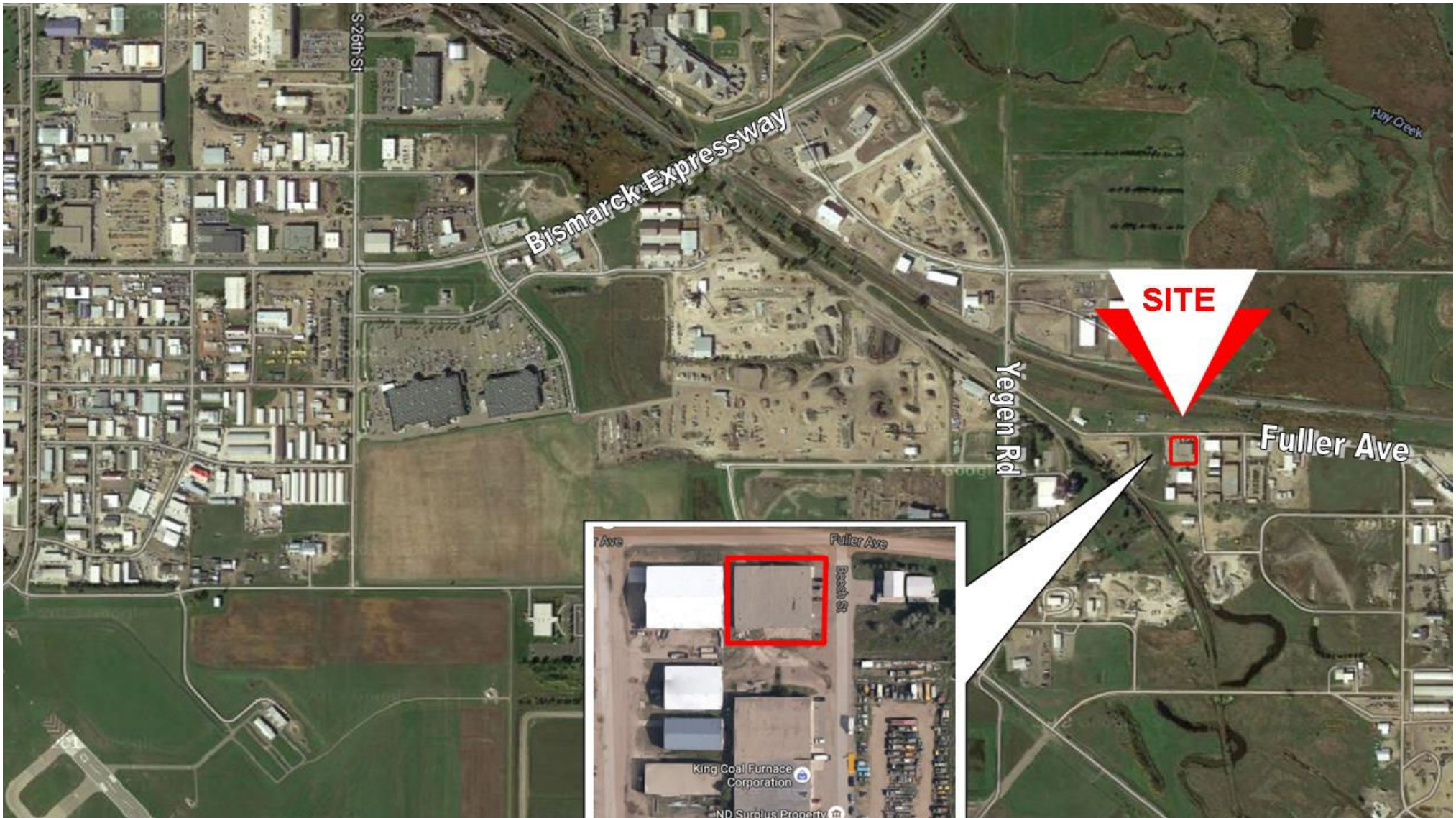
Broker does not guarantee the information describing this property. Interested parties are advised to independently verify the information through personal inspectors or with appropriate professionals.



Kyle Holwagner, CCIM, SIOR
701.400.5373
Kyle@DanielCompanies.com

Kristyn Steckler, Senior Client Coordinator
701.527.0138
Kristyn@DanielCompanies.com

DanielCompanies.com



Kyle Holwagner, CCIM, SIOR
701.400.5373
Kyle@DanielCompanies.com

Kristyn Steckler, Senior Client Coordinator
701.527.0138
Kristyn@DanielCompanies.com

DanielCompanies.com



DANIEL COMPANIES

The Leader in Commercial Real Estate



Bill Daniel
CCIM, Broker

701.220.2455
Bill@DanielCompanies.com



Kyle Holwagner
CCIM, SIOR

701.400.5373
Kyle@DanielCompanies.com



Taylor Daniel
Commercial REALTOR®

701.391.4262
Taylor@DanielCompanies.com

Serving commercial real estate clients with unmatched market knowledge, experience and a well-deserved reputation for integrity. They know the Bismarck-Mandan commercial real estate market better than anyone.

Powerful Team. Powerful Process. Powerful Results.

Industrial Warehouse / Shop

1244 Beech St. - Bismarck, ND

\$699,900



Kyle Holwagner, CCIM, SIOR
701.400.5373
Kyle@DanielCompanies.com

Kristyn Steckler, Senior Client Coordinator
701.527.0138
Kristyn@DanielCompanies.com

DanielCompanies.com

Potential Uses

- Warehouse Distribution
- Storage
- Manufacturing
- Assembly
- Service



SALE - \$699,900

- Building: 12,000 sf
- Office: 800 sf w/ Mezzanine
- Warehouse: 11,200 sf
- 18' Ceiling Height
- 14' x 14' Overhead Door
- 8' x 9' Dock Door
- Restroom
- Floor Drain
- Well, Septic Tank
- New Lighting
- New Unit Heaters
- Taxes 2017: \$2,525.16
- Specials 2017: None

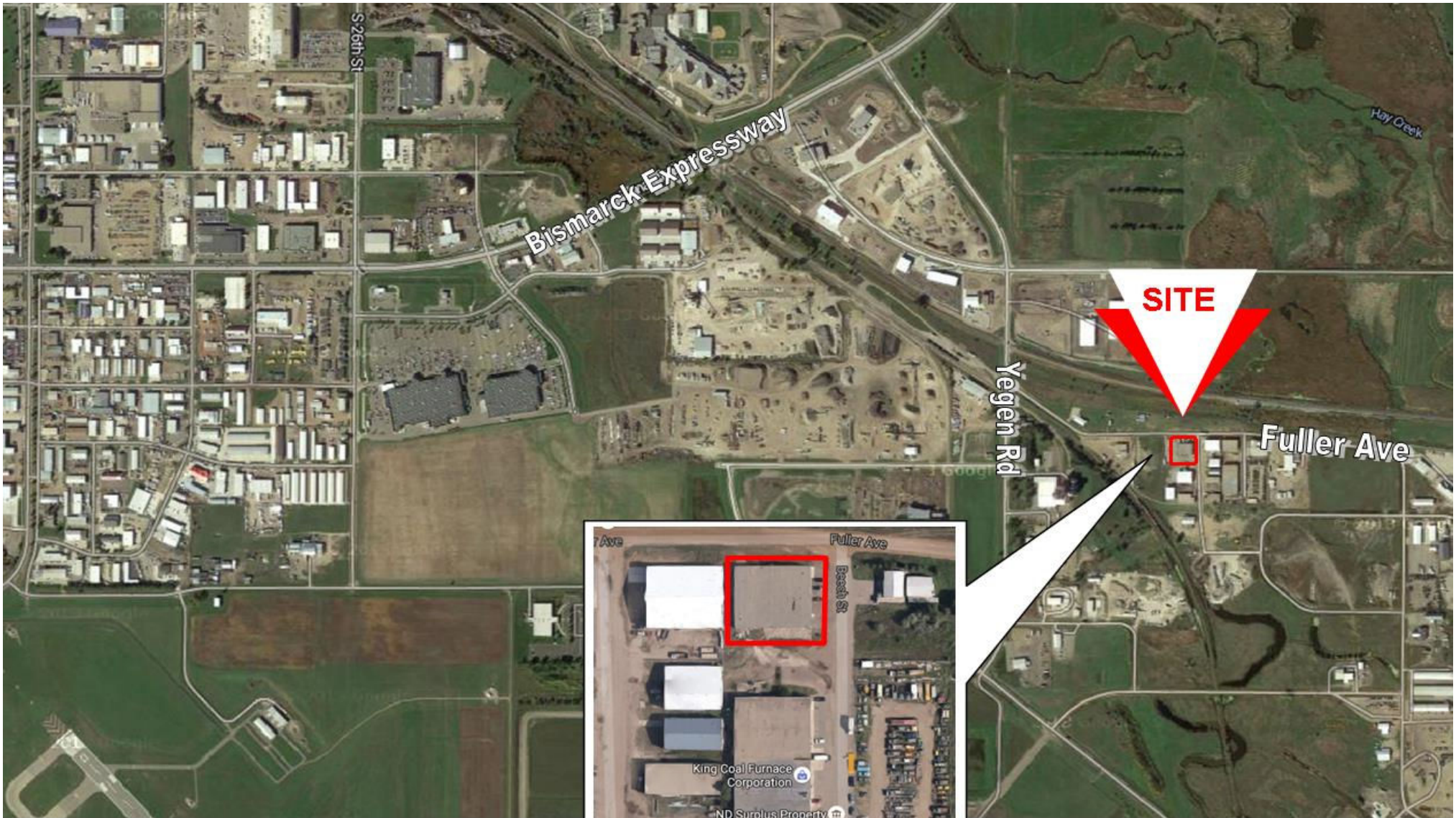
Broker does not guarantee the information describing this property. Interested parties are advised to independently verify the information through personal inspectors or with appropriate professionals.



Kyle Holwagner, CCIM, SIOR
701.400.5373
Kyle@DanielCompanies.com

Kristyn Steckler, Senior Client Coordinator
701.527.0138
Kristyn@DanielCompanies.com

DanielCompanies.com



Kyle Holwagner, CCIM, SIOR
701.400.5373
Kyle@DanielCompanies.com

Kristyn Steckler, Senior Client Coordinator
701.527.0138
Kristyn@DanielCompanies.com

DanielCompanies.com



DANIEL COMPANIES

The Leader in Commercial Real Estate



Bill Daniel
CCIM, Broker

701.220.2455
Bill@DanielCompanies.com



Kyle Holwagner
CCIM, SIOR

701.400.5373
Kyle@DanielCompanies.com



Taylor Daniel
Commercial REALTOR®

701.391.4262
Taylor@DanielCompanies.com

Serving commercial real estate clients with unmatched market knowledge, experience and a well-deserved reputation for integrity. They know the Bismarck-Mandan commercial real estate market better than anyone.

Powerful Team. Powerful Process. Powerful Results.

Industrial Warehouse / Shop

1244 Beech St. - Bismarck, ND

\$699,900



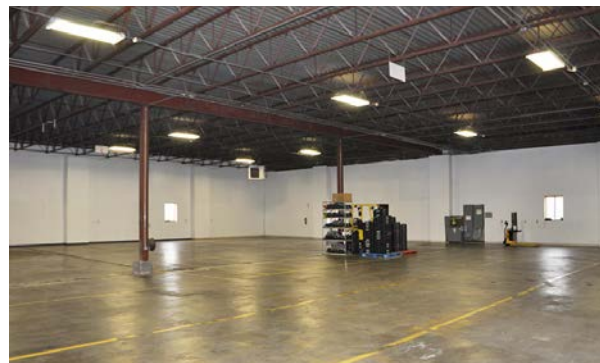
Kyle Holwagner, CCIM, SIOR
701.400.5373
Kyle@DanielCompanies.com

Kristyn Steckler, Senior Client Coordinator
701.527.0138
Kristyn@DanielCompanies.com

DanielCompanies.com

Potential Uses

- Warehouse Distribution
- Storage
- Manufacturing
- Assembly
- Service



SALE - \$699,900

- Building: 12,000 sf
- Office: 800 sf w/ Mezzanine
- Warehouse: 11,200 sf
- 18' Ceiling Height
- 14' x 14' Overhead Door
- 8' x 9' Dock Door
- Restroom
- Floor Drain
- Well, Septic Tank
- New Lighting
- New Unit Heaters
- Taxes 2017: \$2,525.16
- Specials 2017: None

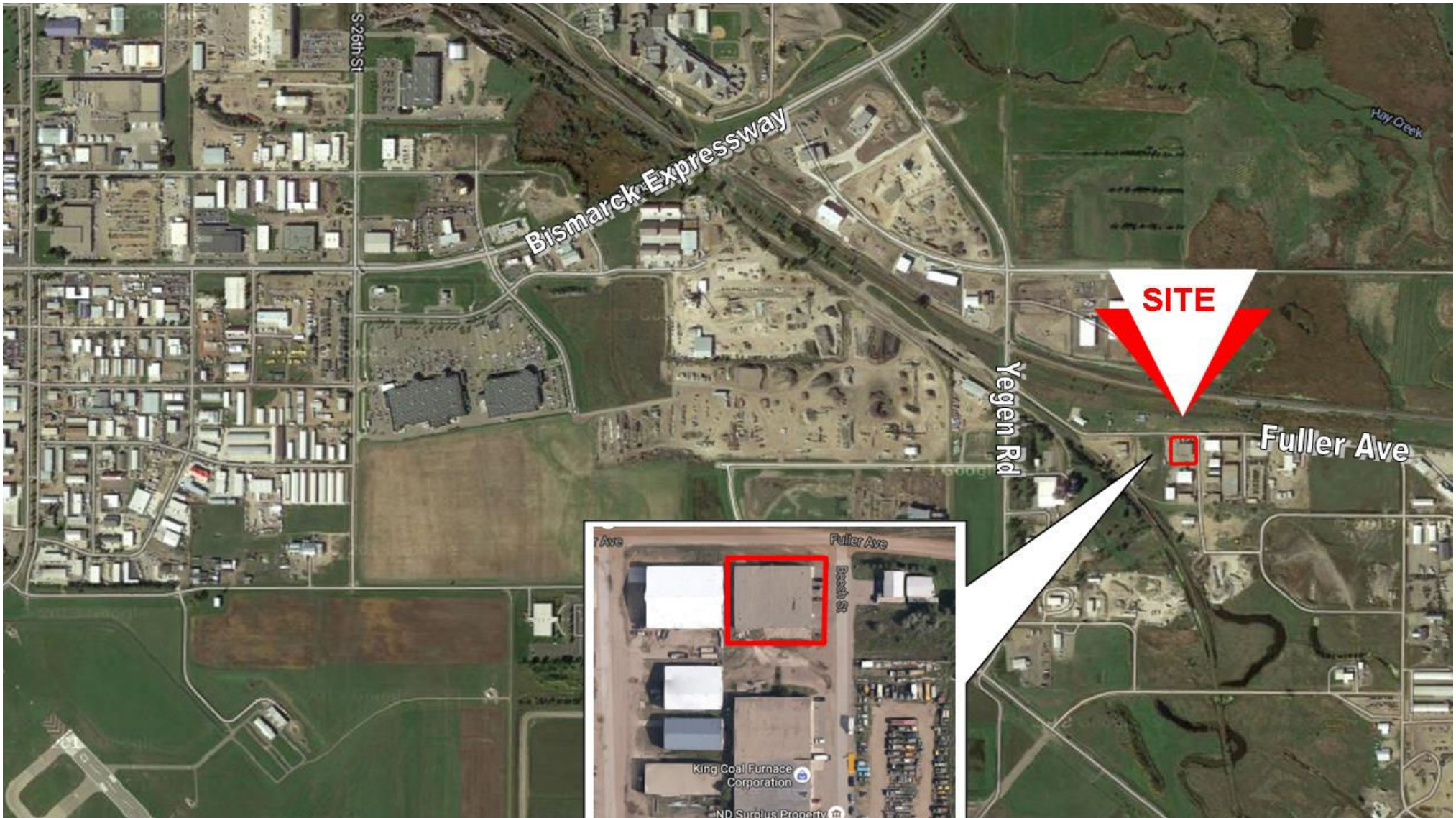
Broker does not guarantee the information describing this property. Interested parties are advised to independently verify the information through personal inspectors or with appropriate professionals.



Kyle Holwagner, CCIM, SIOR
701.400.5373
Kyle@DanielCompanies.com

Kristyn Steckler, Senior Client Coordinator
701.527.0138
Kristyn@DanielCompanies.com

DanielCompanies.com



Kyle Holwagner, CCIM, SIOR
701.400.5373
Kyle@DanielCompanies.com

Kristyn Steckler, Senior Client Coordinator
701.527.0138
Kristyn@DanielCompanies.com

DanielCompanies.com



DANIEL COMPANIES

The Leader in Commercial Real Estate



Bill Daniel
CCIM, Broker

701.220.2455
Bill@DanielCompanies.com



Kyle Holwagner
CCIM, SIOR

701.400.5373
Kyle@DanielCompanies.com



Taylor Daniel
Commercial REALTOR®

701.391.4262
Taylor@DanielCompanies.com

Serving commercial real estate clients with unmatched market knowledge, experience and a well-deserved reputation for integrity. They know the Bismarck-Mandan commercial real estate market better than anyone.

Powerful Team. Powerful Process. Powerful Results.