

Retail / Office Space

1035B E Interstate Ave - Bismarck, ND

960 sf @ \$15.00 psf (\$1,200 mo.) Modified Net



Kyle Holwagner, CCIM, SIOR
701.400.5373
Kyle@DanielCompanies.com

Kristyn Steckler, Senior Client Coordinator
701.527.0138
Kristyn@DanielCompanies.com

DanielCompanies.com

Executive Summary for Lease

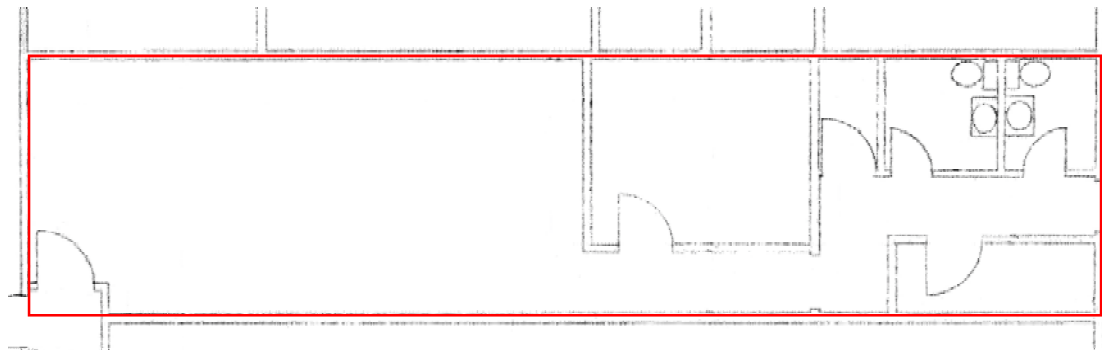
Address:	1035 E Interstate Ave - Bismarck
Date Available:	Immediately
Lease Term:	Negotiable
Lease Rate:	\$15.00 psf
Approximate SF:	960 sf
Parking:	Off Street Parking
Tenant Responsibilities:	RE Taxes over the base year, utilities, pro-rata snow removal, parking lot maintenance and repair
Landlord Responsibilities:	Base year real estate taxes and specials, building insurance, structural walls and roof maintenance, parking lot

Broker does not guarantee the information describing this property. Interested parties are advised to independently verify the information through personal inspectors or with appropriate professionals.

Property Highlights

One private office
2 Restrooms
Located just off State St. & I-94
Large open retail area
Good access & great visibility
Store front window
Building signage
Pylon Signage (additional charge)

Store Front



Alley Access



Kyle Holwagner, CCIM, SIOR
 701.400.5373
Kyle@DanielCompanies.com

Kristyn Steckler, Senior Client Coordinator
 701.527.0138
Kristyn@DanielCompanies.com

DanielCompanies.com



State St / Hwy 83

40,660 - VPD

Exit 159

37,815 - VPD

34,790 - VPD

Logos: Fairfield, DAN'S SuperMARKET, Red Lobster

Logos: Sookies GARAGE, VINTAGE ALES, Pita Pit, Kirkwood BAKERY & DELI, Applebee's

Logos: GATEWAY, WELLS FARGO, Hong Kong, American, MainStay Suites, amc, Turitto's Dry Cleaners, Paradise HOBBY LOBBY, Health Source, Gate City Bank, LONGHORN

Logos: Kmart, 6, McDonald's, Subway, GREAT RIVER ENERGY, aetna, BASIN ELECTRIC POWER COOPERATIVE

Logos: SUBWAY, Schlotzsky's, CORNERSTONE BANK, Super 8, Pizza Hut

Logos: 240, ExxonMobil, Days Inn, Americas Best Value Inn & Suites, O'Reilly AUTO PARTS, RAMADA, TACO JOHN'S





DANIEL COMPANIES

The Leader in Commercial Real Estate



Bill Daniel
CCIM, Broker

701.220.2455
Bill@DanielCompanies.com



Kyle Holwagner
CCIM, SIOR

701.400.5373
Kyle@DanielCompanies.com



Taylor Daniel
Commercial REALTOR®

701.391.4262
Taylor@DanielCompanies.com

Serving commercial real estate clients with unmatched market knowledge, experience and a well-deserved reputation for integrity. They know the Bismarck-Mandan commercial real estate market better than anyone.

Powerful Team. Powerful Process. Powerful Results.