

Prime Downtown Investment/Retail Building

116 N 5th St, Bismarck, ND

For Sale: 1,149,000

For Lease: 3,363 sf Main + 2,500 sf lower level—\$5,045/mo NNN



Taylor Daniel, Commercial REALTOR

701.391.4262

Taylor@DanielCompanies.com

DanielCompanies.com

Main Floor



Basement
[2500]

100

25

Apartments

2nd floor
[2500]

100

25

Building Sale Price: \$1,149,000

- 4 fully rented apartments in upper level
- Upper Level: 2,500 sf
- Main Floor: 3,363 sf
- Lower Level: 2,500 sf

Lease Price:

\$5,045 Per month NNN

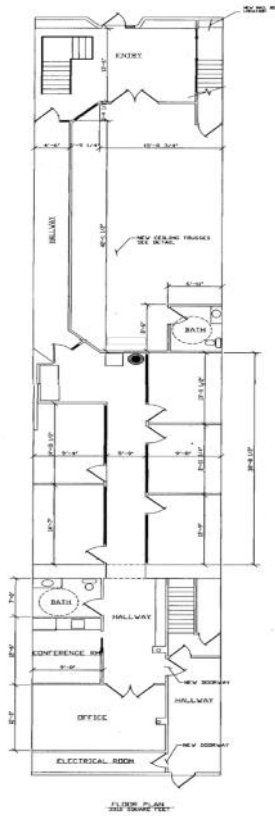
NNN estimated @ \$1.50 psf

- Lease Space: 3,363 sf Main floor & additional 2,500 sf lower level
- Landlord will provide open shell main floor

- Large street front windows
- High visibility & daytime population
- Alley access on west side
- Zoned: Downtown Core

Broker does not guarantee the information describing this property. Interested parties are advised to independently verify the information through personal inspectors or with appropriate professionals.

Main Floor



Building Sale Price: \$1,149,000

- 4 fully rented apartments in upper level

Upper Level: 2,500 sf

Main Floor: 3,363 sf

Lower Level: 2,500 sf

Lease Price:

\$5,045 Per month NNN

NNN estimated @ \$1.50 psf

- Lease Space: 3,363 sf Main floor & additional 2,500 sf lower level

- Landlord will provide open shell main floor

- Large street front windows

- High visibility & daytime population

- Alley access on west side

- Zoned: Downtown Core

Broker does not guarantee the information describing this property. Interested parties are advised to independently verify the information through personal inspectors or with appropriate professionals.

Upper Level Apartments

Basement
[2500]

100

25

Apartments

2nd floor
[2500]

100

25



Building Sale Price: \$1,149,000

- 4 fully rented apartments in upper level

Upper Level: 2,500 sf

Main Floor: 3,363 sf

Lower Level: 2,500 sf

Lease Price:

\$5,045 Per month NNN

NNN estimated @ \$1.50 psf

- Lease Space: 3,363 sf Main floor & additional 2,500 sf lower level

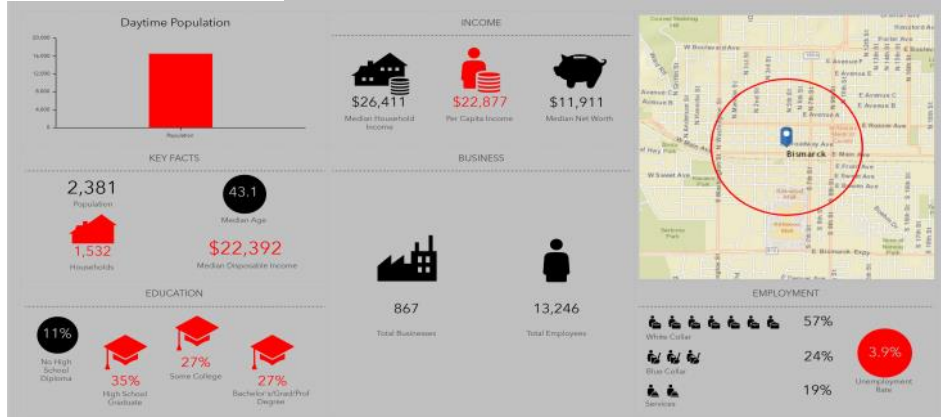
- Landlord will provide open shell main floor

- Large street front windows
- High visibility & daytime population
- Alley access on west side
- Zoned: Downtown Core

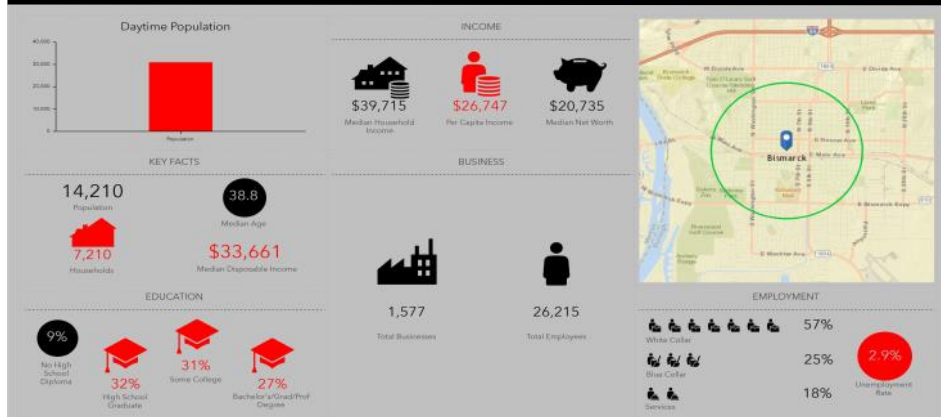
Broker does not guarantee the information describing this property. Interested parties are advised to independently verify the information through personal inspectors or with appropriate professionals.

Demographics

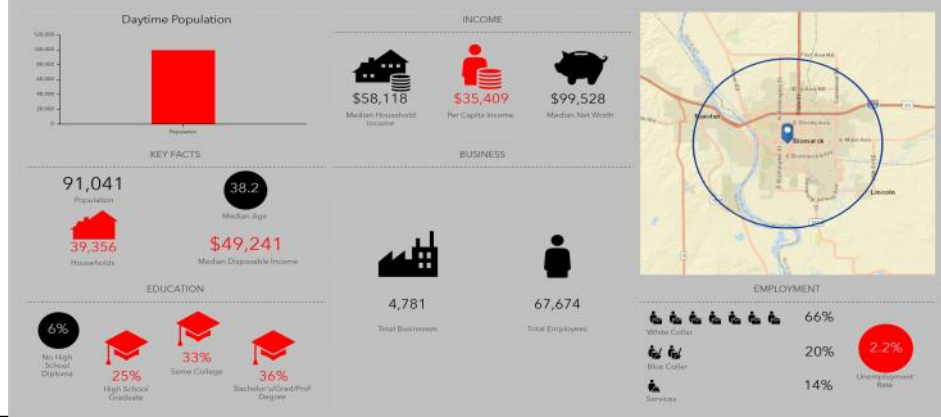
.5 Mile



1 Mile

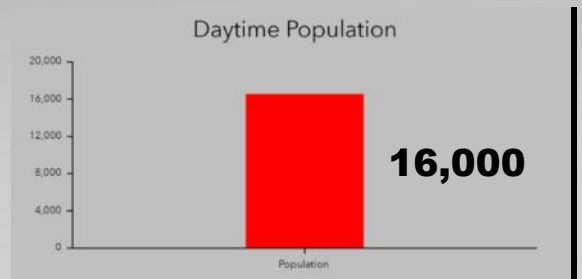


5 Mile



Walk Score
86

116 N 5th St. has a Walk Score of 86 out of 100. Very Walkable – Most errands can be accomplished on foot.



16,000 daytime population within .5 mile in Downtown Core



Taylor Daniel, Commercial REALTOR
701.391.4262
Taylor@DanielCompanies.com

DanielCompanies.com

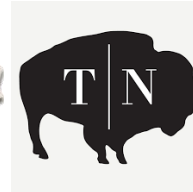
**Convenient walking distance to
25 restaurants, 17 bars, 40 retail businesses, 5 art galleries**



Taylor Daniel, Commercial REALTOR
701.391.4262
Taylor@DanielCompanies.com

DanielCompanies.com

Join Exciting Downtown Bismarck!



Taylor Daniel, Commercial REALTOR
701.391.4262
Taylor@DanielCompanies.com

DanielCompanies.com



DANIEL COMPANIES

The Leader in Commercial Real Estate

Serving commercial real estate clients with unmatched market knowledge, experience, and a well-deserved reputation for integrity. They know the Bismarck-Mandan commercial real estate market better than anyone. This powerful team delivers powerful results.



Bill Daniel, CCIM, Broker
701.220.2455
Bill@DanielCompanies.com



Kyle Holwagner, CCIM, SIOR
701.400.5373
Kyle@DanielCompanies.com



Taylor Daniel, Commercial REALTOR®
701.391.4262
Taylor@DanielCompanies.com

701.223.8488
304 E ROSSER AVE #200
BISMARCK, ND 58501



ICSC CCIM SIOR
INDIVIDUAL MEMBERS

RETAIL • INVESTMENTS • OFFICE • INDUSTRIAL • SITE SELECTION • LEASING • BUILD TO SUIT • BROKERAGE