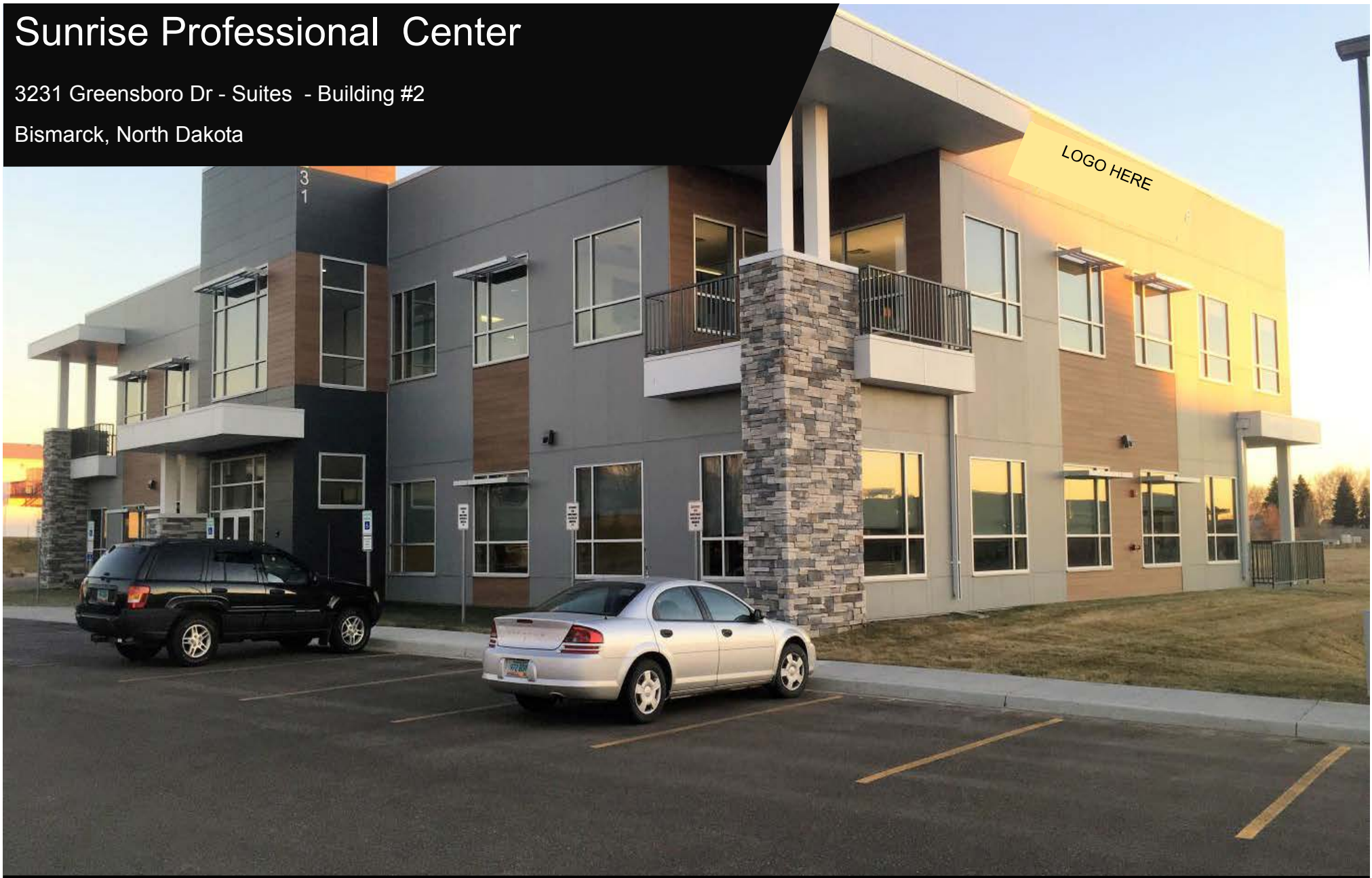


# Sunrise Professional Center

3231 Greensboro Dr - Suites - Building #2

Bismarck, North Dakota



**Kyle Holwagner, CCIM, SIOR**

701.400.5373

[Kyle@DanielCompanies.com](mailto:Kyle@DanielCompanies.com)

**Kristyn Steckler, Market Coordinator**

701.527.0138

[Kristyn@DanielCompanies.com](mailto:Kristyn@DanielCompanies.com)

**DanielCompanies.com**

# Executive Summary

## User Groups:

- ◆ Medical
- ◆ Accountants
- ◆ Law Services
- ◆ Professional Office Services
- ◆ State / Government Services
- ◆ Oil Companies
- ◆ Engineering

Available March 1, 2018

Sub-lease End Date: May 31, 2026

**Sub-Lease Price: \$20 psf Full Service**

*\*Includes Executive Office Furniture, Cubicle Arrangements and Custom Finishes*

**Space Available: 12,390.60 sf Rentable  
(11,524 sf useable)**

(may be subdivided w/ Landlord approval)

- ◆ Class A finishes
- ◆ Training Room
- ◆ Executive Board Room
- ◆ Kitchenette
- ◆ Elevator
- ◆ Common Restrooms
- ◆ Ample Surface Parking
- ◆ Great Signage



Kyle Holwagner, CCIM, SIOR  
701.400.5373

[Kyle@DanielCompanies.com](mailto:Kyle@DanielCompanies.com)

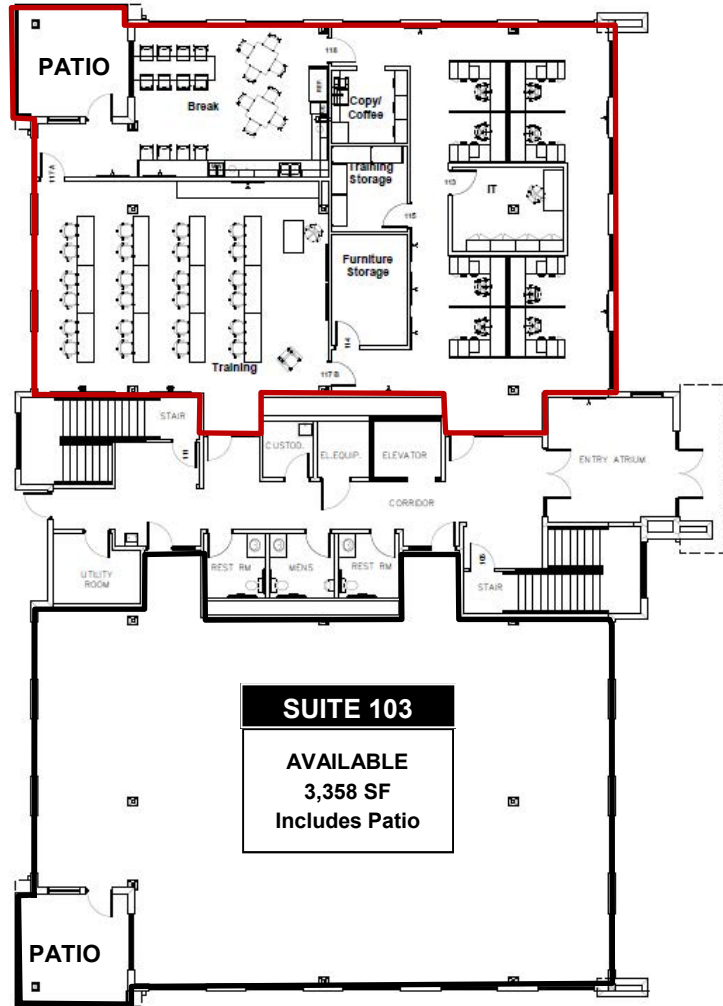
Kristyn Steckler, Market Coordinator  
701.527.0138

[Kristyn@DanielCompanies.com](mailto:Kristyn@DanielCompanies.com)

[DanielCompanies.com](http://DanielCompanies.com)

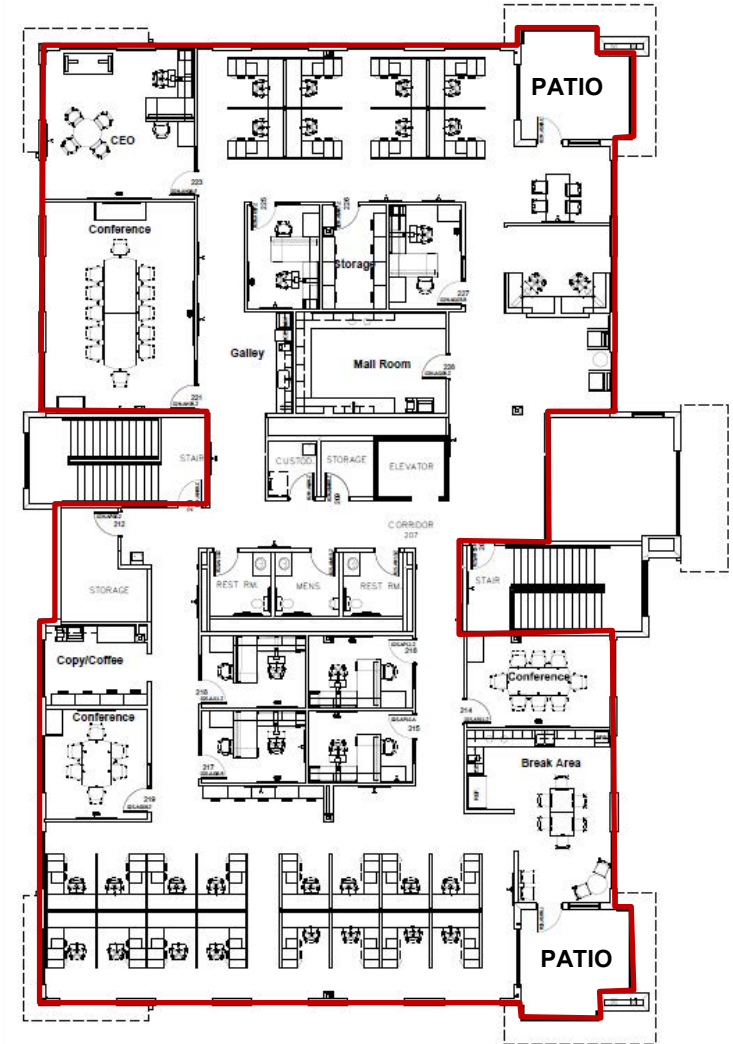
# Floor Plans

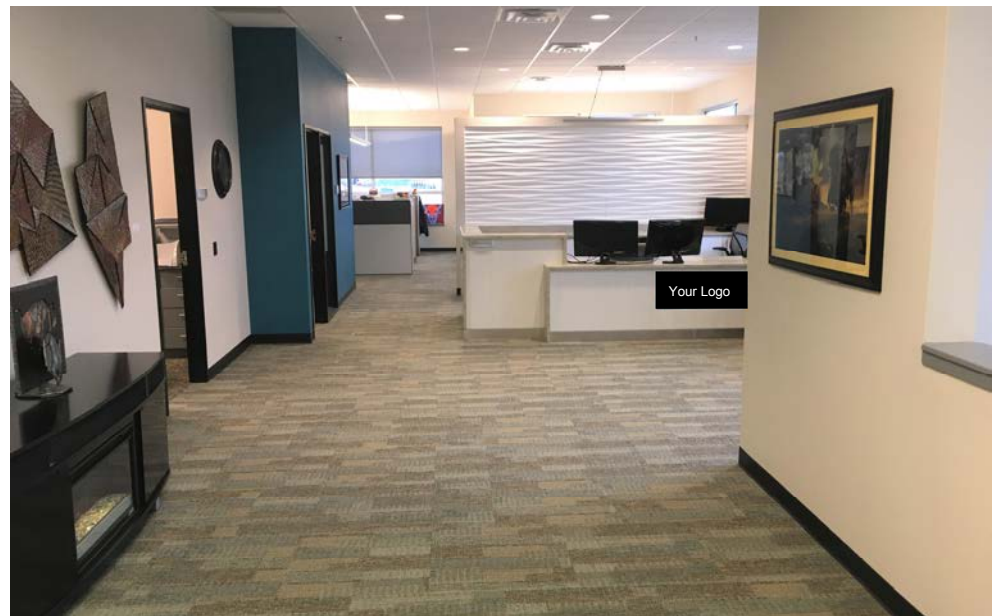
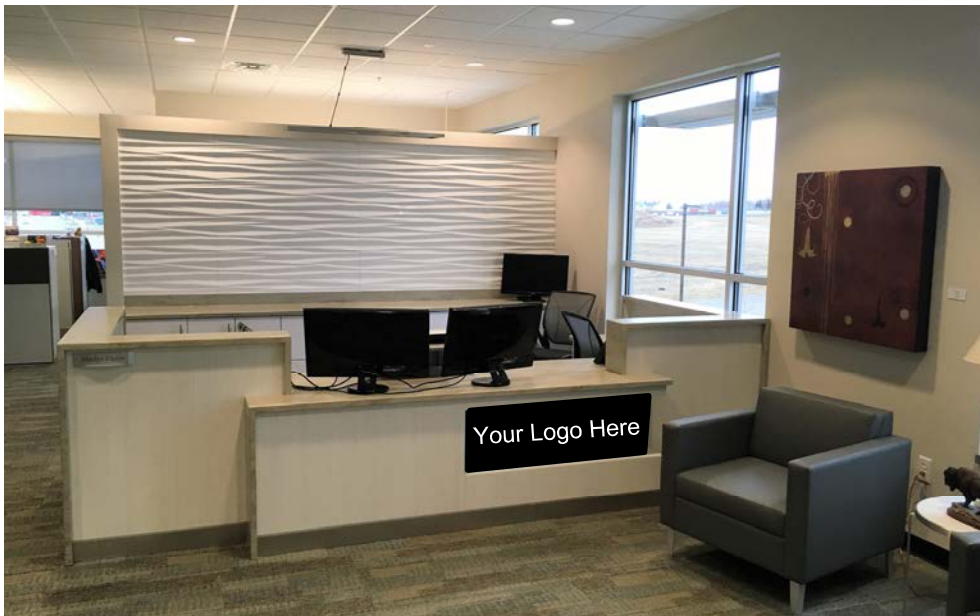
## 1st Floor



**12,390.60 sf Rentable**  
**(11,524 sf Useable)**

## 2nd Floor





**Kyle Holwagner, CCIM, SIOR**  
701.400.5373  
[Kyle@DanielCompanies.com](mailto:Kyle@DanielCompanies.com)

**Kristyn Steckler, Market Coordinator**  
701.527.0138  
[Kristyn@DanielCompanies.com](mailto:Kristyn@DanielCompanies.com)

**DanielCompanies.com**

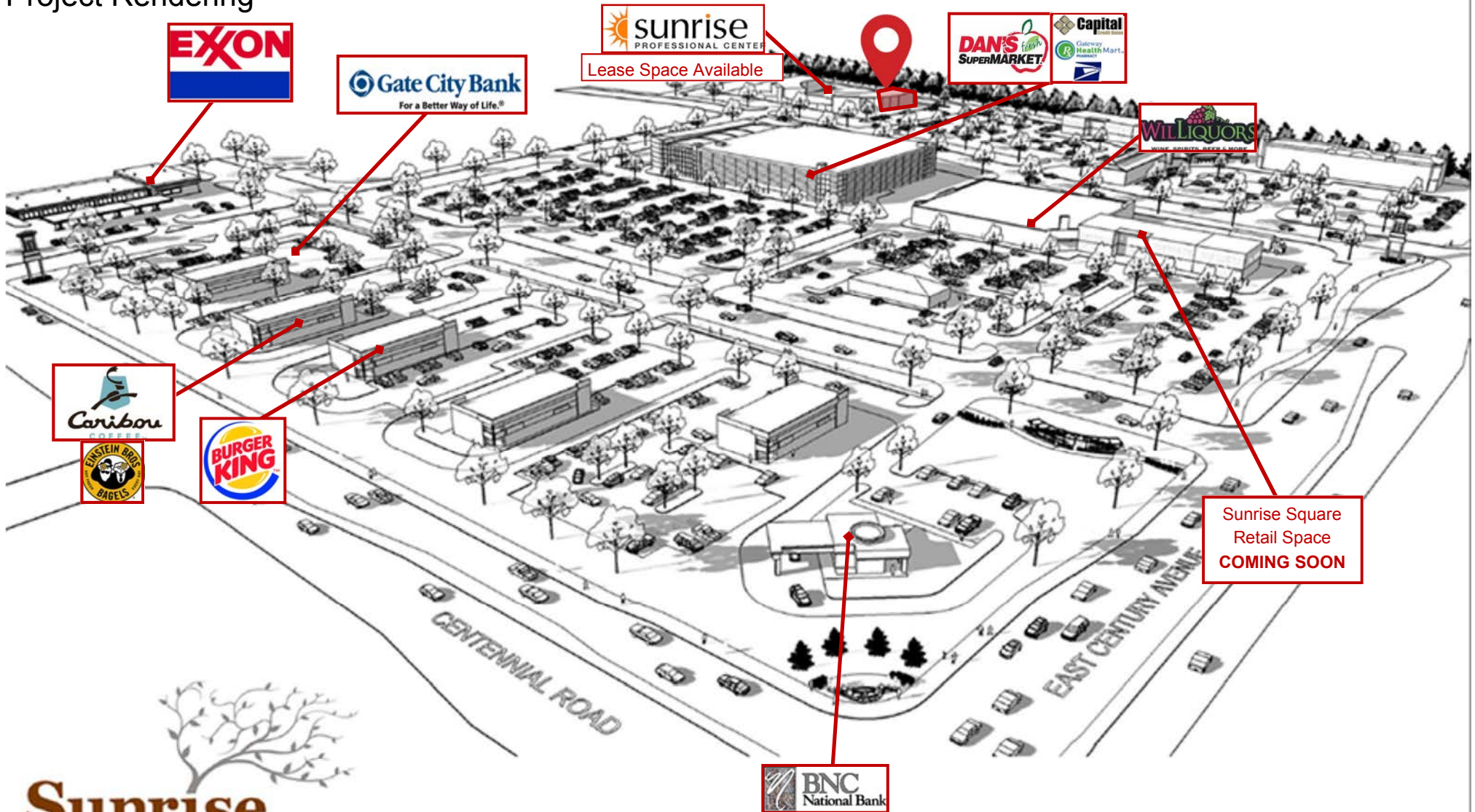


**Kyle Holwagner, CCIM, SIOR**  
701.400.5373  
[Kyle@DanielCompanies.com](mailto:Kyle@DanielCompanies.com)

**Kristyn Steckler, Market Coordinator**  
701.527.0138  
[Kristyn@DanielCompanies.com](mailto:Kristyn@DanielCompanies.com)

**DanielCompanies.com**

# Project Rendering



**Sunrise Town**  
CENTRE

Site Development Concept **KLJ**

  
**DANIEL COMPANIES**  
The Leader in Commercial Real Estate

Kyle Holwagner, CCIM, SIOR  
701.400.5373  
[Kyle@DanielCompanies.com](mailto:Kyle@DanielCompanies.com)

Kristyn Steckler, Market Coordinator  
701.527.0138  
[Kristyn@DanielCompanies.com](mailto:Kristyn@DanielCompanies.com)

[DanielCompanies.com](http://DanielCompanies.com)

# Project Aerial Overview





# DANIEL COMPANIES

The Leader in Commercial Real Estate

Serving commercial real estate clients with unmatched market knowledge, experience, and a well-deserved reputation for integrity. They know the Bismarck-Mandan commercial real estate market better than anyone. This powerful team delivers powerful results.



**Bill Daniel, CCIM, Broker**  
701.220.2455  
Bill@DanielCompanies.com



**Kyle Holwagner, CCIM, SIOR**  
701.400.5373  
Kyle@DanielCompanies.com



**Taylor Daniel, Commercial REALTOR®**  
701.391.4262  
Taylor@DanielCompanies.com

701.223.8488  
304 E ROSSER AVE #200  
BISMARCK, ND 58501



ICSC CCIM SIOR  
INDIVIDUAL MEMBERS

RETAIL • INVESTMENTS • OFFICE • INDUSTRIAL • SITE SELECTION • LEASING • BUILD TO SUIT • BROKERAGE