

# City Center Plaza

418 E Broadway Ave Lower Level - Bismarck, ND

6,319 sf - \$9.95 psf / \$5,239.50 mo.



**Taylor Daniel Commercial REALTOR®**

701.391.4262

[Taylor@DanielCompanies.com](mailto:Taylor@DanielCompanies.com)

**Bill Daniel CCIM, Broker**

701.220.2455

[Bill@DanielCompanies.com](mailto:Bill@DanielCompanies.com)

[DanielCompanies.com](http://DanielCompanies.com)

## 418 E Broadway Ave - City Center Plaza

### Located Downtown Bismarck Near:

- Federal Building
- City / County Building
- Burleigh County Courthouse
- US Post Office
- Banks
- Professional Buildings
- Restaurants
- Bismarck Event Center
- Kirkwood Regional Mall
- Wells Fargo Building
- Sanford Health

- In the heart of downtown Bismarck
- Across the street from City Parking Ramp - 10 spaces included in rent
- Walking distance to many downtown restaurants / bars
- Easy Access to Bismarck Event Center and Kirkwood Mall
- Common conference room available on 2nd floor on Tenant use

### Potential Uses:

- Professional Services
- Medical Office
- Financial Office
- Legal Office
- Accounting Firm
- Government Offices

### Lease: \$5,239.50 / mo.

**\$9.95 psf - Full Service**

- Space Available: 6,319 sf
- Private Offices
- 3 Year Min Lease Term
- Common Restroom
- Elevator
- 10 Parking Spaces Included
- Great Corner Location: Corner of N 5th St and E Broadway Ave
- Can be subdivided

Broker does not guarantee the information describing this property. Interested parties are advised to independently verify the information through personal inspectors or with appropriate professionals.



**Taylor Daniel Commercial REALTOR®**

701.391.4262

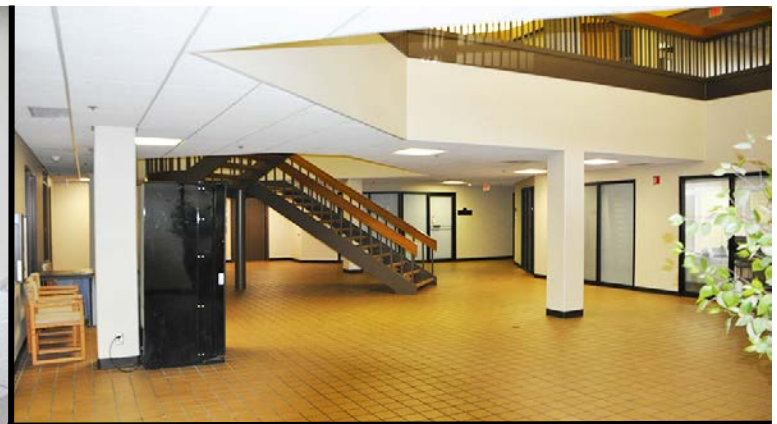
[Taylor@DanielCompanies.com](mailto:Taylor@DanielCompanies.com)

**Bill Daniel CCIM, Broker**

701.220.2455

[Bill@DanielCompanies.com](mailto:Bill@DanielCompanies.com)

**DanielCompanies.com**

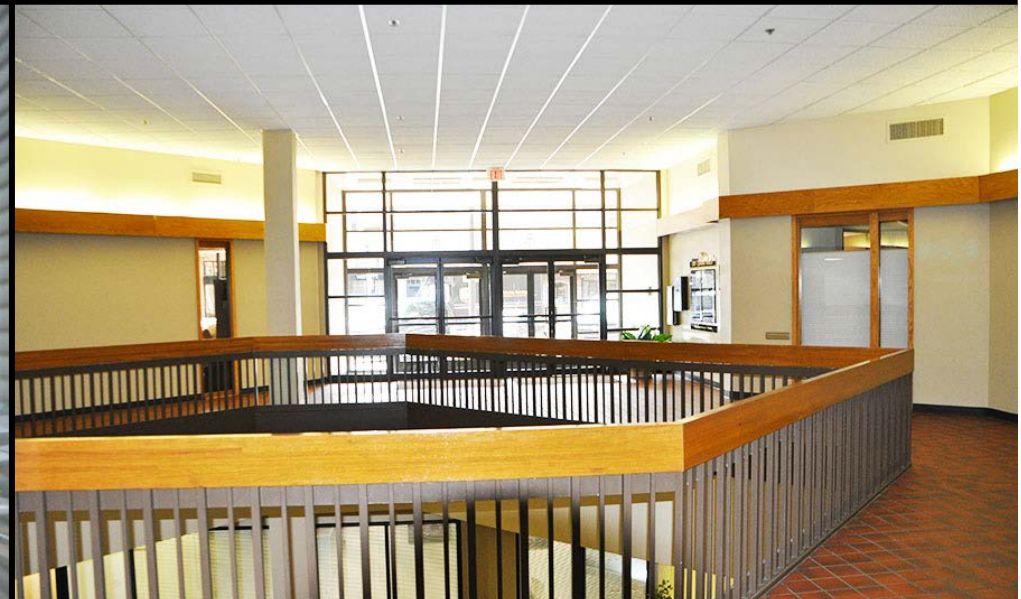
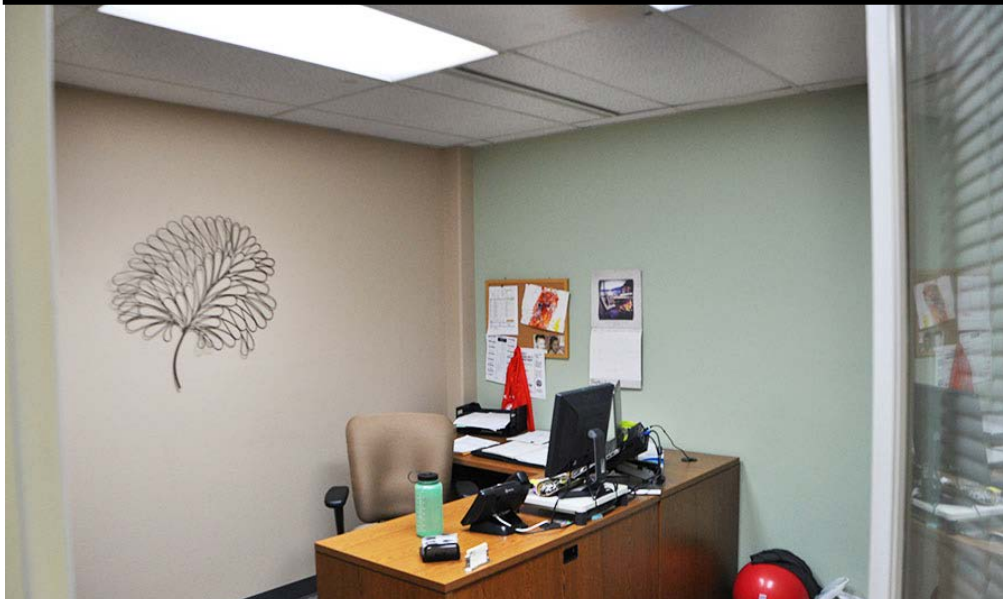


**Taylor Daniel Commercial REALTOR®**  
701.391.4262  
[Taylor@DanielCompanies.com](mailto:Taylor@DanielCompanies.com)

**Bill Daniel CCIM, Broker**  
701.220.2455  
[Bill@DanielCompanies.com](mailto:Bill@DanielCompanies.com)

**DanielCompanies.com**

# Shared Conference Room



**Taylor Daniel Commercial REALTOR®**  
701.391.4262  
[Taylor@DanielCompanies.com](mailto:Taylor@DanielCompanies.com)

**Bill Daniel CCIM, Broker**  
701.220.2455  
[Bill@DanielCompanies.com](mailto:Bill@DanielCompanies.com)

[DanielCompanies.com](http://DanielCompanies.com)

# City Center Plaza - 418 East Broadway Avenue - Bismarck, North Dakota



Drawn By: Inline Designs, Inc (5/6/11)

## Lower Level Layout

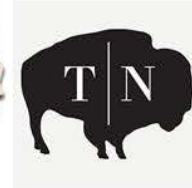
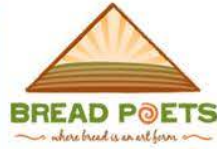


Taylor Daniel Commercial REALTOR®  
701.391.4262  
Taylor@DanielCompanies.com

Bill Daniel CCIM, Broker  
701.220.2455  
Bill@DanielCompanies.com

[DanielCompanies.com](http://DanielCompanies.com)

# Join Exciting Downtown Bismarck!

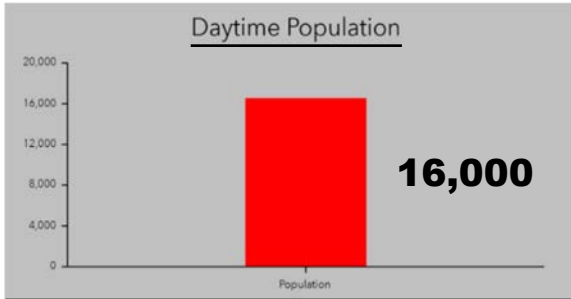


Taylor Daniel Commercial REALTOR®  
701.391.4262  
Taylor@DanielCompanies.com

Bill Daniel CCIM, Broker  
701.220.2455  
Bill@DanielCompanies.com

[DanielCompanies.com](http://DanielCompanies.com)

# Downtown Bismarck



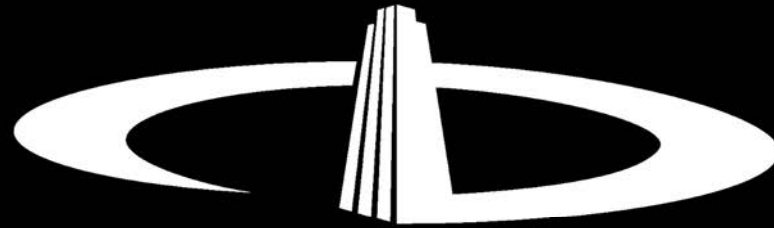
Walk Score  
**86**



Taylor Daniel Commercial REALTOR®  
701.391.4262  
Taylor@DanielCompanies.com

Bill Daniel CCIM, Broker  
701.220.2455  
Bill@DanielCompanies.com

DanielCompanies.com



# DANIEL COMPANIES

The Leader in Commercial Real Estate

Serving commercial real estate clients with unmatched market knowledge, experience, and a well-deserved reputation for integrity. They know the Bismarck-Mandan commercial real estate market better than anyone. This powerful team delivers powerful results.



**Bill Daniel, CCIM, Broker**  
701.220.2455  
Bill@DanielCompanies.com



**Kyle Holwagner, CCIM, SIOR**  
701.400.5373  
Kyle@DanielCompanies.com



**Taylor Daniel, Commercial REALTOR®**  
701.391.4262  
Taylor@DanielCompanies.com

701.223.8488  
304 E ROSSER AVE #200  
BISMARCK, ND 58501



ICSC CCIM SIOR  
INDIVIDUAL MEMBERS

RETAIL • INVESTMENTS • OFFICE • INDUSTRIAL • SITE SELECTION • LEASING • BUILD TO SUIT • BROKERAGE