

Grand Pacific Center

400 E Broadway Ave. Suite 514 - Bismarck, ND

950 sf - \$15.50 psf = \$1,227 / mo.



Taylor Daniel, Commercial REALTOR®

701.391.4262

Taylor@DanielCompanies.com

Bill Daniel, Broker, CCIM, Broker

701.220.2455

Bill@DanielCompanies.com

DanielCompanies.com

In The “Heart of Downtown”

Convenient walking distance to many new trendy restaurants, bars and shops

- Legal Firms
- Financial Institutions
- Professional Offices
- Medical District
- Bismarck City Administration Office
- Burleigh County Offices
- Bismarck Event Center
- Kirkwood Mall



400 E. Broadway Ave has a Walk Score of 89 out of 100. Very Walkable – Most errands can be accomplished on foot.

Potential Uses

- Professional services
- Government offices
- Accounting firm
- Legal offices
- Medical offices
- Engineering firm

Lease Terms:

Three year lease minimum

Lease fees include a \$7 psf operating cost estimate with year end adjustment

Parking

Across the street from City Parking Ramp - \$56 /mo. per space (Tenant pays for parking)

Building Highlights

- Bismarck's most prominent downtown office building
- Professional and spacious lobby area
- Conference room located on 3rd floor (sign-in sheet for tenant's to reserve)
- Large break room in lower level
- Health / work-out room in lower level
- Two elevators

**Tenant provides financials, credit review required*

Lease Price: \$15.50 psf Full Service

- **State of the art lobby renovation in 2018**
- 3% Annual Increase
- Lease Space: 950 sf - 5th Floor
- 3 Year Lease Minimum
- Private Offices w/ Reception Area
- Downtown Landmark Building
- Two Elevators
- Building Conference Room & Break Room
- Great Location:
Corner of N 4th St and Broadway Ave



Taylor Daniel, Commercial REALTOR®

701.391.4262

Taylor@DanielCompanies.com

Bill Daniel, Broker, CCIM, Broker

701.220.2455

Bill@DanielCompanies.com

DanielCompanies.com

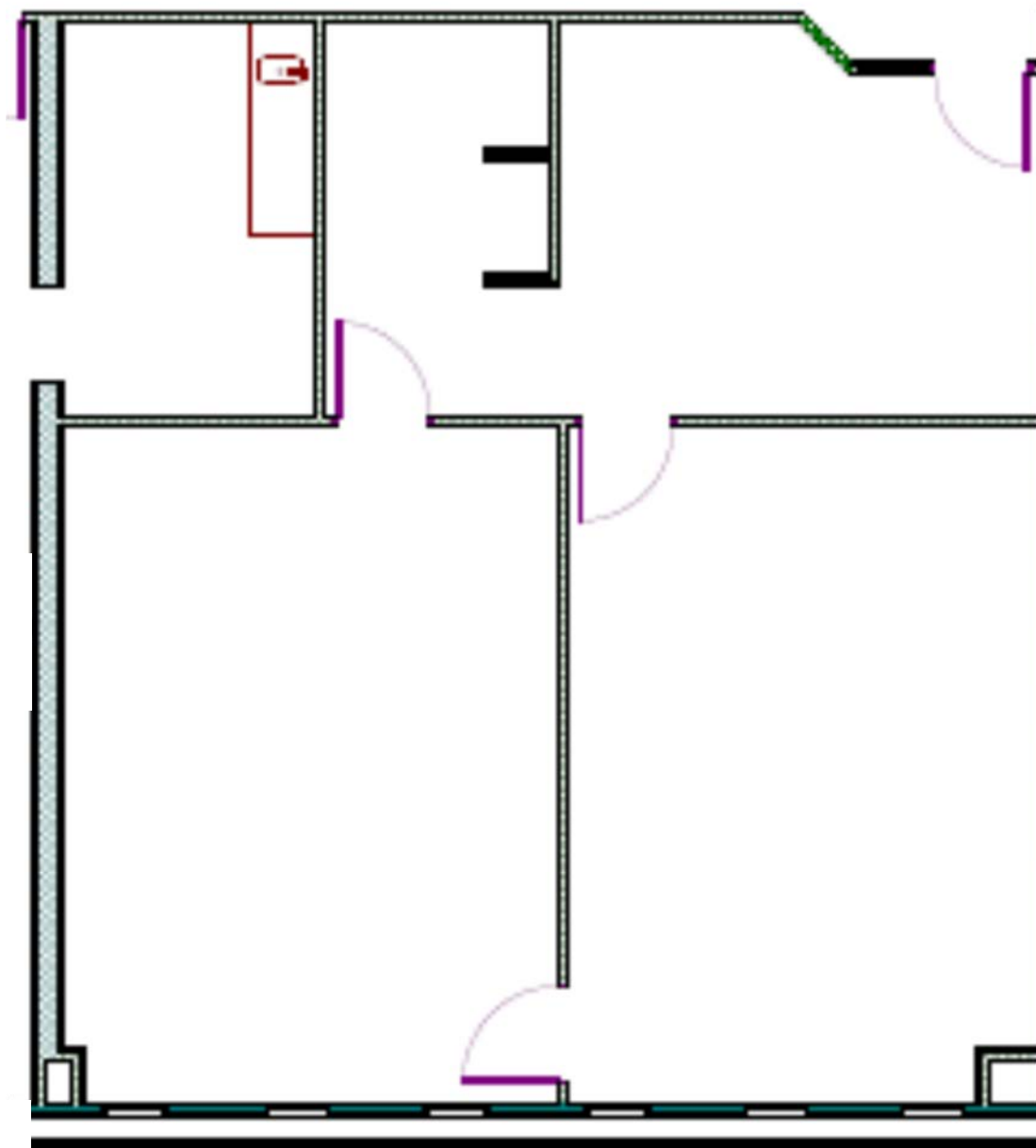


Taylor Daniel, Commercial REALTOR®
701.391.4262
Taylor@DanielCompanies.com

Bill Daniel, Broker, CCIM, Broker
701.220.2455
Bill@DanielCompanies.com

DanielCompanies.com

Floor Plan



Taylor Daniel, Commercial REALTOR®
701.391.4262
Taylor@DanielCompanies.com

Bill Daniel, Broker, CCIM, Broker
701.220.2455
Bill@DanielCompanies.com

DanielCompanies.com

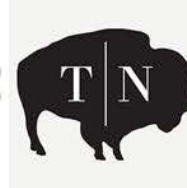


Taylor Daniel, Commercial REALTOR®
 701.391.4262
Taylor@DanielCompanies.com

Bill Daniel, Broker, CCIM, Broker
 701.220.2455
Bill@DanielCompanies.com

DanielCompanies.com

Join Exciting Downtown Bismarck!

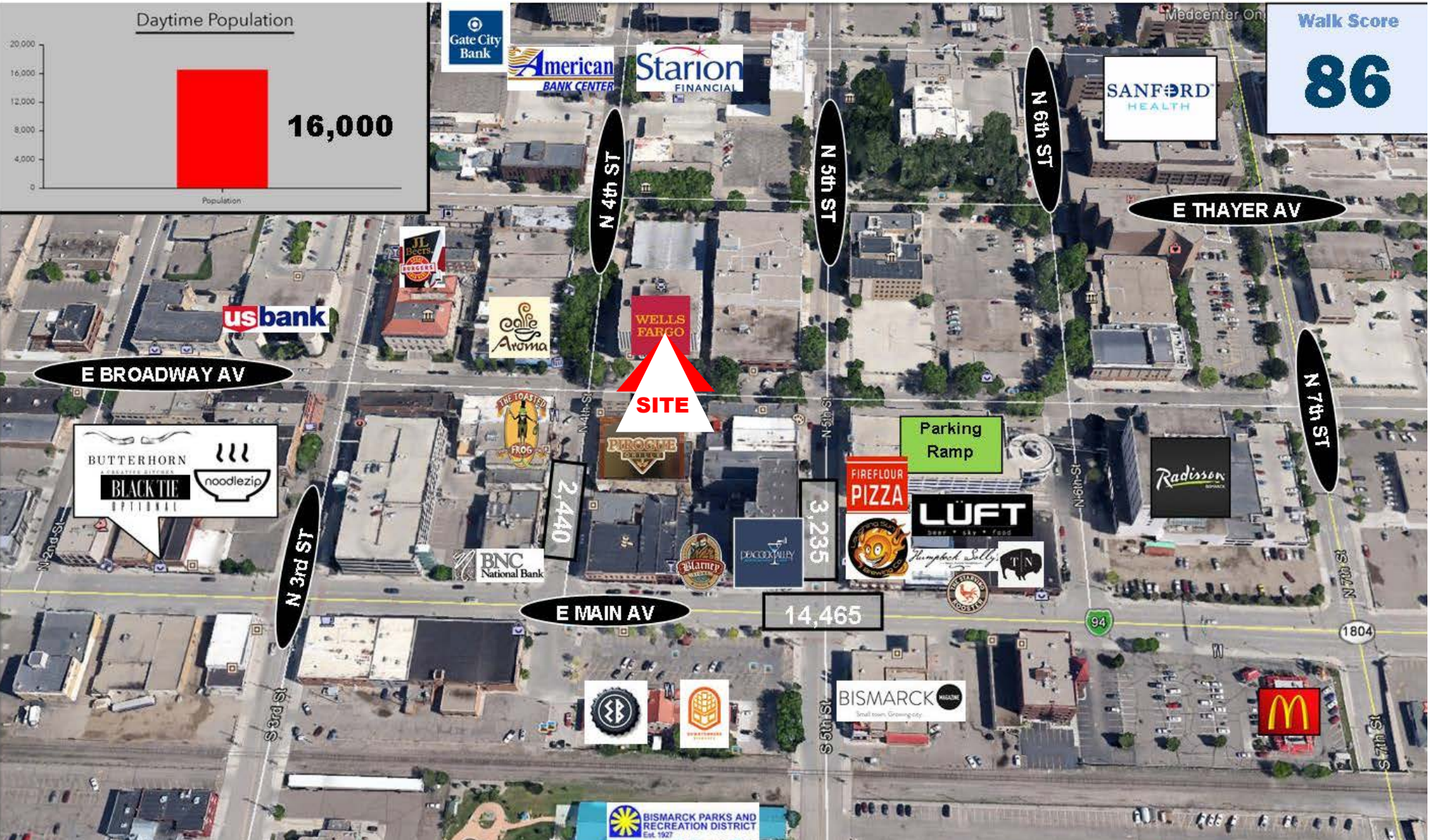
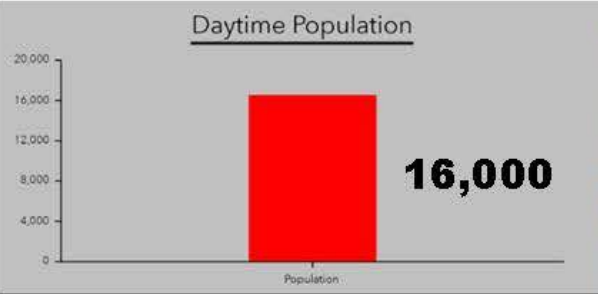


Taylor Daniel, Commercial REALTOR®
701.391.4262
Taylor@DanielCompanies.com

Bill Daniel, Broker, CCIM, Broker
701.220.2455
Bill@DanielCompanies.com

DanielCompanies.com

Downtown Bismarck



Taylor Daniel, Commercial REALTOR®
701.391.4262
Taylor@DanielCompanies.com

Bill Daniel, Broker, CCIM, Broker
701.220.2455
Bill@DanielCompanies.com

DanielCompanies.com



DANIEL COMPANIES

The Leader in Commercial Real Estate

Serving commercial real estate clients with unmatched market knowledge, experience, and a well-deserved reputation for integrity. They know the Bismarck-Mandan commercial real estate market better than anyone. This powerful team delivers powerful results.



Bill Daniel, CCIM, Broker
701.220.2455
Bill@DanielCompanies.com



Kyle Holwagner, CCIM, SIOR
701.400.5373
Kyle@DanielCompanies.com



Taylor Daniel, Commercial REALTOR®
701.391.4262
Taylor@DanielCompanies.com

701.223.8488
304 E ROSSER AVE #200
BISMARCK, ND 58501



ICSC CCIM SIOR
INDIVIDUAL MEMBERS

RETAIL • INVESTMENTS • OFFICE • INDUSTRIAL • SITE SELECTION • LEASING • BUILD TO SUIT • BROKERAGE