

Grand Pacific Center

400 E Broadway Ave. Suite 517 - Bismarck, ND

1,088 sf - \$15.50 psf = \$1,406 / mo.



Taylor Daniel, Commercial REALTOR®
701.391.4262
Taylor@DanielCompanies.com

Bill Daniel, Broker, CCIM, Broker
701.220.2455
Bill@DanielCompanies.com

DanielCompanies.com

In The "Heart of Downtown"

Convenient walking distance to many new trendy restaurants, bars and shops

- Legal Firms
- Financial Institutions
- Professional Offices
- Medical District
- Bismarck City Administration Office
- Burleigh County Offices
- Bismarck Event Center
- Kirkwood Mall

Lease Terms:

Three year lease minimum

Lease fees include a \$7 psf operating cost estimate with year end adjustment

Parking

Across the street from City Parking Ramp - \$56 /mo. per space (Tenant pays for parking)

Building Highlights

Bismarck's most prominent downtown office building

Professional and spacious lobby area

Conference room located on 3rd floor (sign-in sheet for tenant's to reserve)

Large break room in lower level

Health / work-out room in lower level

Two elevators

**Tenant provides financials, credit review required*

Potential Uses

- Professional services
- Government offices
- Accounting firm
- Legal offices
- Medical offices
- Engineering firm



400 E. Broadway Ave has a Walk Score of 89 out of 100. Very Walkable – Most errands can be accomplished on foot.

Lease Price: \$15.50 psf Full Service

- **State of the art lobby renovation in 2018**
- 3% Annual Increase
- Lease Space: 1,088 sf - 5th Floor
- 3 Year Lease Minimum
- Private Offices w/ Reception Area
- Downtown Landmark Building
- Two Elevators
- Building Conference Room & Break Room
- Great Location:
Corner of N 4th St and Broadway Ave

Broker does not guarantee the information describing this property. Interested parties are advised to independently verify the information through personal inspectors or with appropriate professionals.



Taylor Daniel, Commercial REALTOR®

701.391.4262

Taylor@DanielCompanies.com

Bill Daniel, Broker, CCIM, Broker

701.220.2455

Bill@DanielCompanies.com

DanielCompanies.com

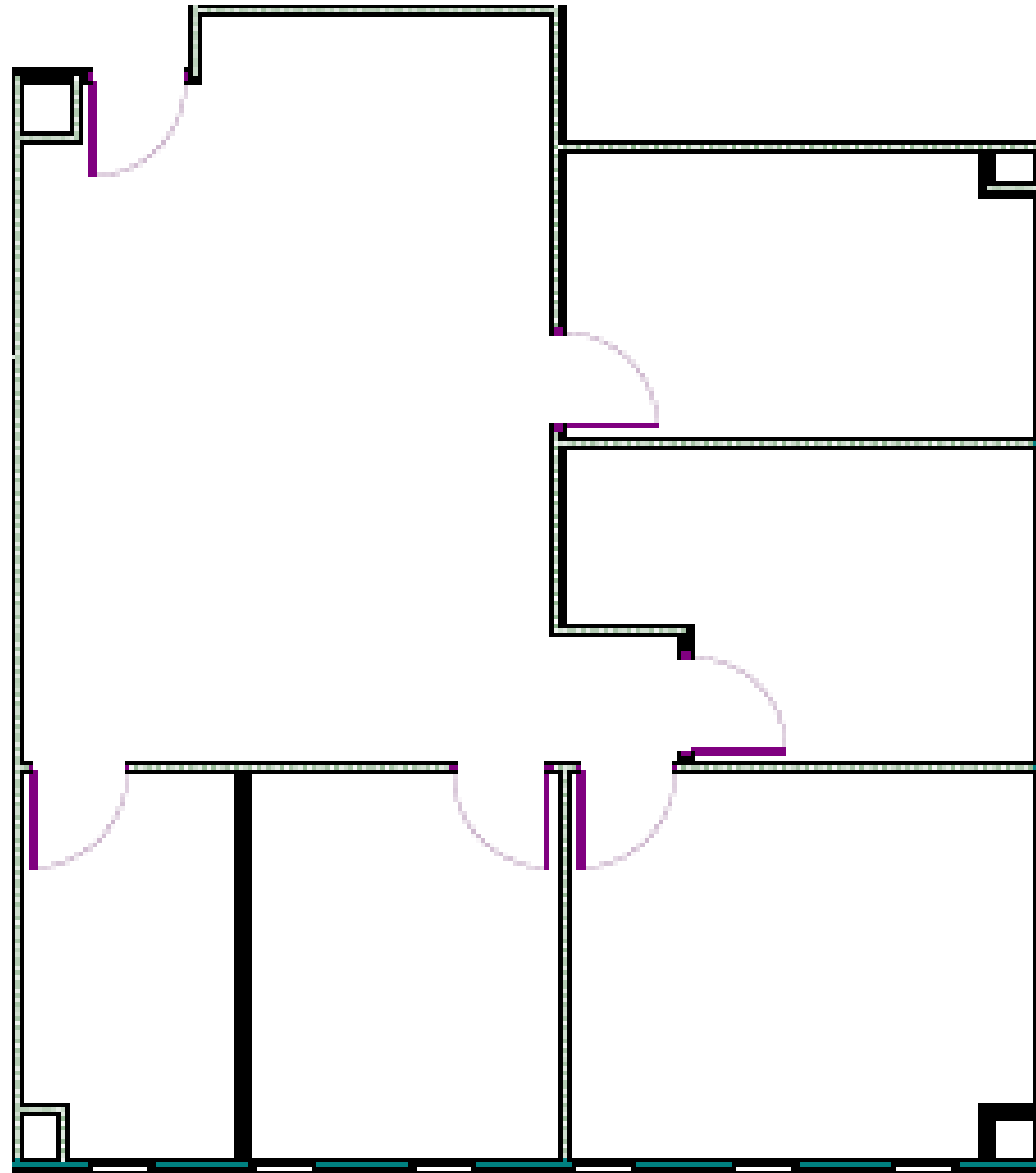


Taylor Daniel, Commercial REALTOR®
701.391.4262
Taylor@DanielCompanies.com

Bill Daniel, Broker, CCIM, Broker
701.220.2455
Bill@DanielCompanies.com

DanielCompanies.com

Floor Plan



Taylor Daniel, Commercial REALTOR®
701.391.4262
Taylor@DanielCompanies.com

Bill Daniel, Broker, CCIM, Broker
701.220.2455
Bill@DanielCompanies.com

DanielCompanies.com

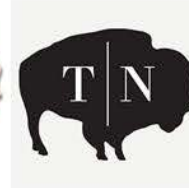


Taylor Daniel, Commercial REALTOR®
701.391.4262
Taylor@DanielCompanies.com

Bill Daniel, Broker, CCIM, Broker
701.220.2455
Bill@DanielCompanies.com

DanielCompanies.com

Join Exciting Downtown Bismarck!



DANIEL COMPANIES
The Leader in Commercial Real Estate

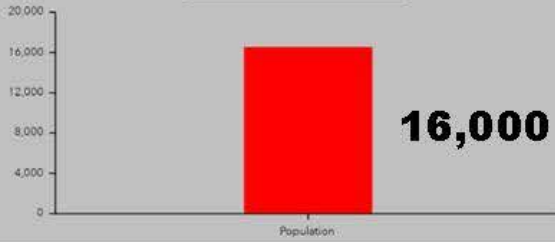
Taylor Daniel, Commercial REALTOR®
701.391.4262
Taylor@DanielCompanies.com

Bill Daniel, Broker, CCIM, Broker
701.220.2455
Bill@DanielCompanies.com

DanielCompanies.com

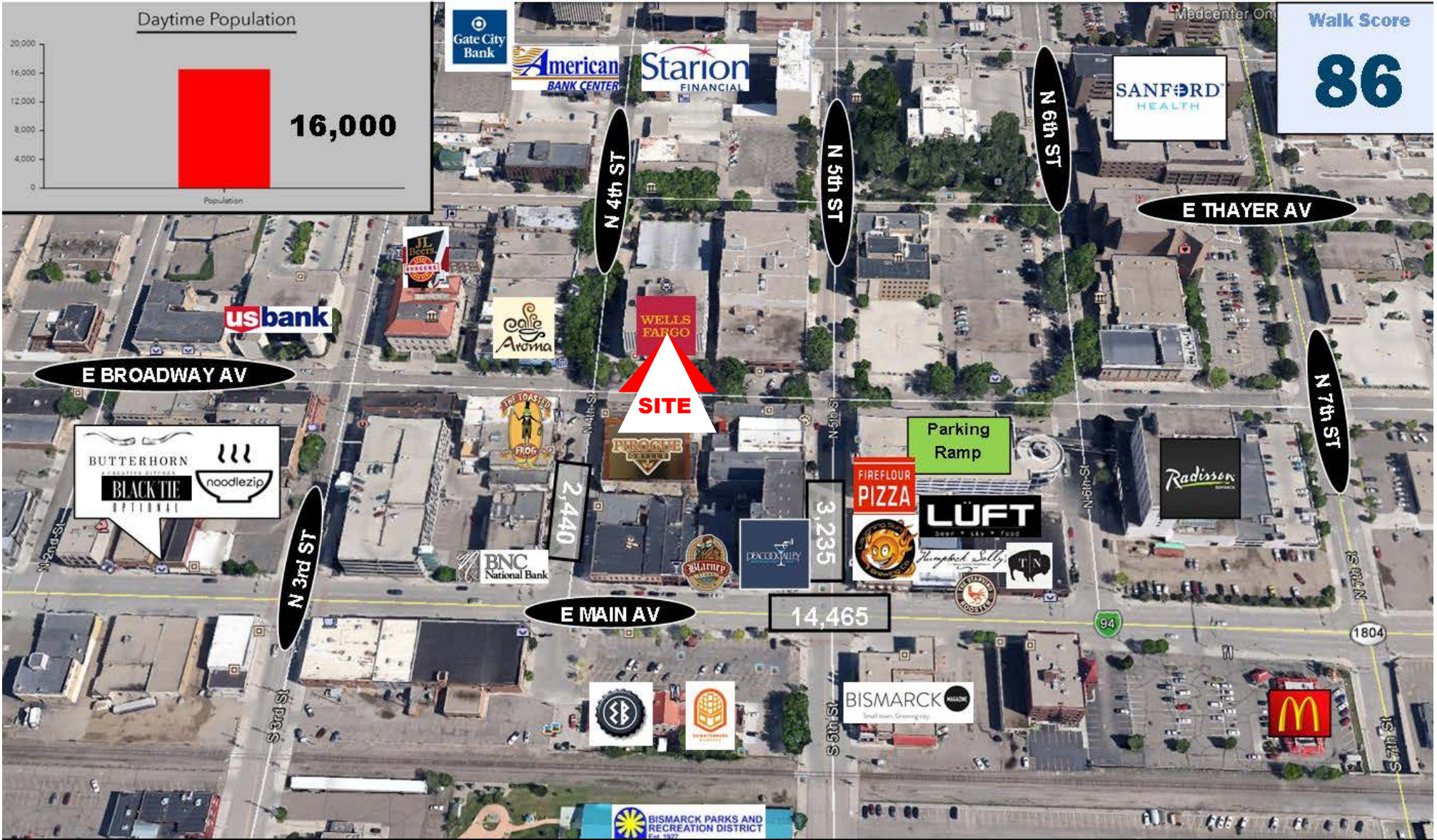
Downtown Bismarck

Daytime Population



Walk Score

86



Taylor Daniel, Commercial REALTOR®
701.391.4262
Taylor@DanielCompanies.com

Bill Daniel, Broker, CCIM, Broker
701.220.2455
Bill@DanielCompanies.com

DanielCompanies.com



DANIEL COMPANIES

The Leader in Commercial Real Estate

Serving commercial real estate clients with unmatched market knowledge, experience, and a well-deserved reputation for integrity. They know the Bismarck-Mandan commercial real estate market better than anyone. This powerful team delivers powerful results.



Bill Daniel, CCIM, Broker
701.220.2455
Bill@DanielCompanies.com



Kyle Holwagner, CCIM, SIOR
701.400.5373
Kyle@DanielCompanies.com



Taylor Daniel, Commercial REALTOR®
701.391.4262
Taylor@DanielCompanies.com

701.223.8488
304 E ROSSER AVE #200
BISMARCK, ND 58501



ICSC CCIM SIOR
INDIVIDUAL MEMBERS

RETAIL • INVESTMENTS • OFFICE • INDUSTRIAL • SITE SELECTION • LEASING • BUILD TO SUIT • BROKERAGE