

Grand Pacific Center

400 E Broadway Ave. Suite 517 - Bismarck, ND

1,088 sf - \$15.50 psf = \$1,406 / mo.



Taylor Daniel | Vice President
Commercial Realtor®
Taylor@DanielCompanies.com

Bill Daniel | President
CCIM, Broker
Bill@DanielCompanies.com

DanielCompanies.com

In The “Heart of Downtown”

Convenient walking distance to many new trendy restaurants, bars and shops

- Legal Firms
- Financial Institutions
- Professional Offices
- Medical District
- Bismarck City Administration Office
- Burleigh County Offices
- Bismarck Event Center
- Kirkwood Mall

Potential Uses

- Professional services
- Government offices
- Accounting firm
- Legal offices
- Medical offices
- Engineering firm



400 E. Broadway Ave has a Walk Score of 89 out of 100. Very Walkable – Most errands can be accomplished on foot.

Lease Terms:

Three year lease minimum

Lease fees include a \$7 psf operating cost estimate with year end adjustment

Parking

Across the street from City Parking Ramp - \$56 /mo. per space (Tenant pays for parking)

Building Highlights

Bismarck's most prominent downtown office building

Professional and spacious lobby area

Conference room located on 3rd floor (sign-in sheet for tenant's to reserve)

Large break room in lower level

Health / work-out room in lower level

Two elevators

**Tenant provides financials, credit review required*

Lease Price: \$15.50 psf Full Service

- **State of the art lobby renovation in 2018**
- 3% Annual Increase
- Lease Space: 1,088 sf - 5th Floor
- 3 Year Lease Minimum
- Private Offices w/ Reception Area
- Downtown Landmark Building
- Two Elevators
- Building Conference Room & Break Room
- Great Location:
Corner of N 4th St and Broadway Ave

Broker does not guarantee the information describing this property. Interested parties are advised to independently verify the information through personal inspectors or with appropriate professionals.



Taylor Daniel | Vice President
Commercial Realtor®
Taylor@DanielCompanies.com

Bill Daniel | President
CCIM, Broker
Bill@DanielCompanies.com

DanielCompanies.com

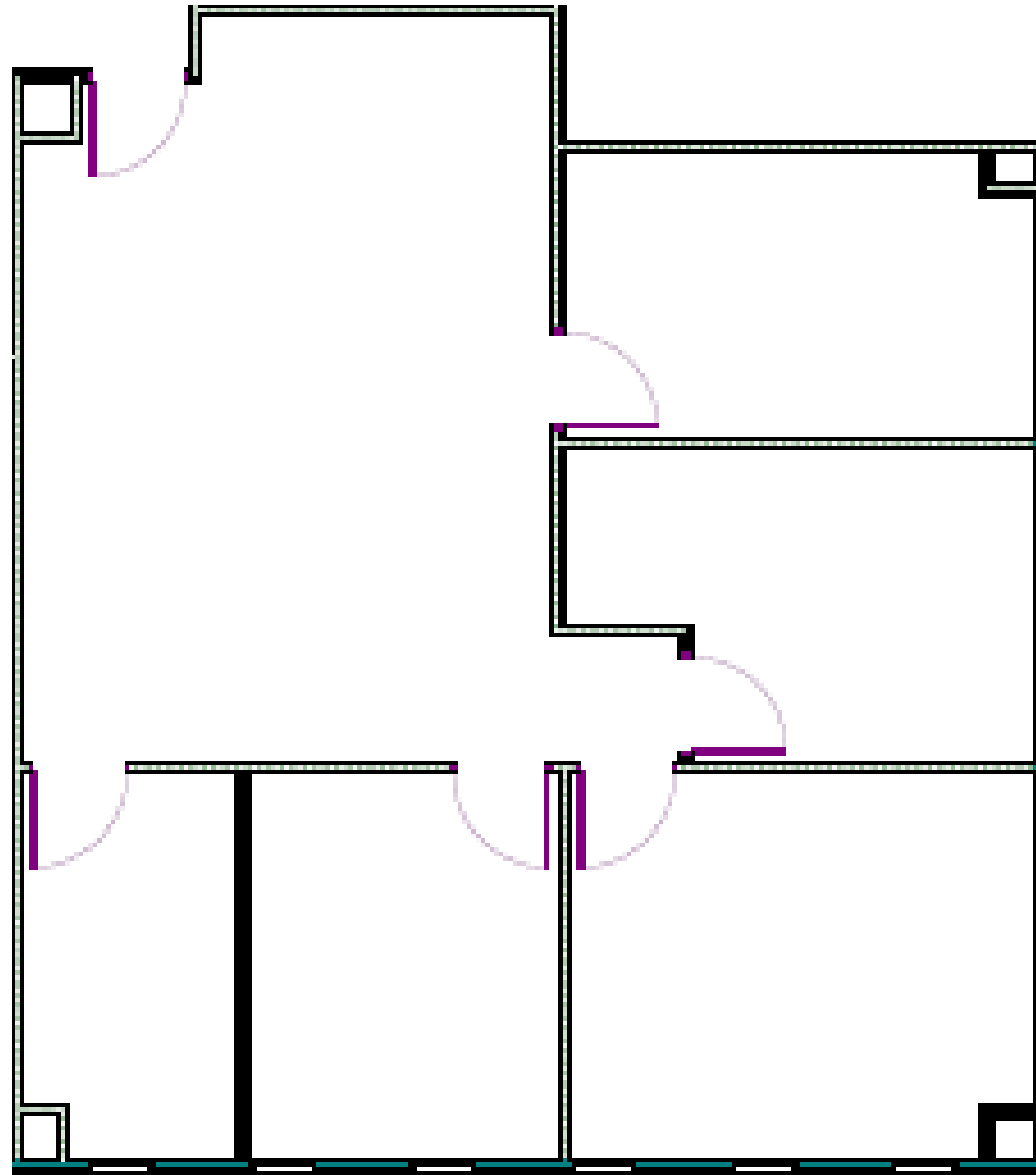


Taylor Daniel | Vice President
Commercial Realtor®
Taylor@DanielCompanies.com

Bill Daniel | President
CCIM, Broker
Bill@DanielCompanies.com

DanielCompanies.com

Floor Plan



Taylor Daniel | Vice President
Commercial Realtor®
Taylor@DanielCompanies.com

Bill Daniel | President
CCIM, Broker
Bill@DanielCompanies.com

DanielCompanies.com



Taylor Daniel | Vice President
Commercial Realtor®
Taylor@DanielCompanies.com

Bill Daniel | President
CCIM, Broker
Bill@DanielCompanies.com

DanielCompanies.com

Join Exciting Downtown Bismarck!



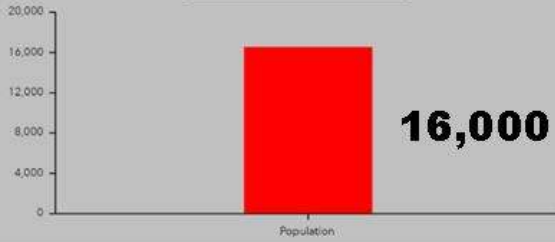
Taylor Daniel | Vice President
Commercial Realtor®
Taylor@DanielCompanies.com

Bill Daniel | President
CCIM, Broker
Bill@DanielCompanies.com

DanielCompanies.com

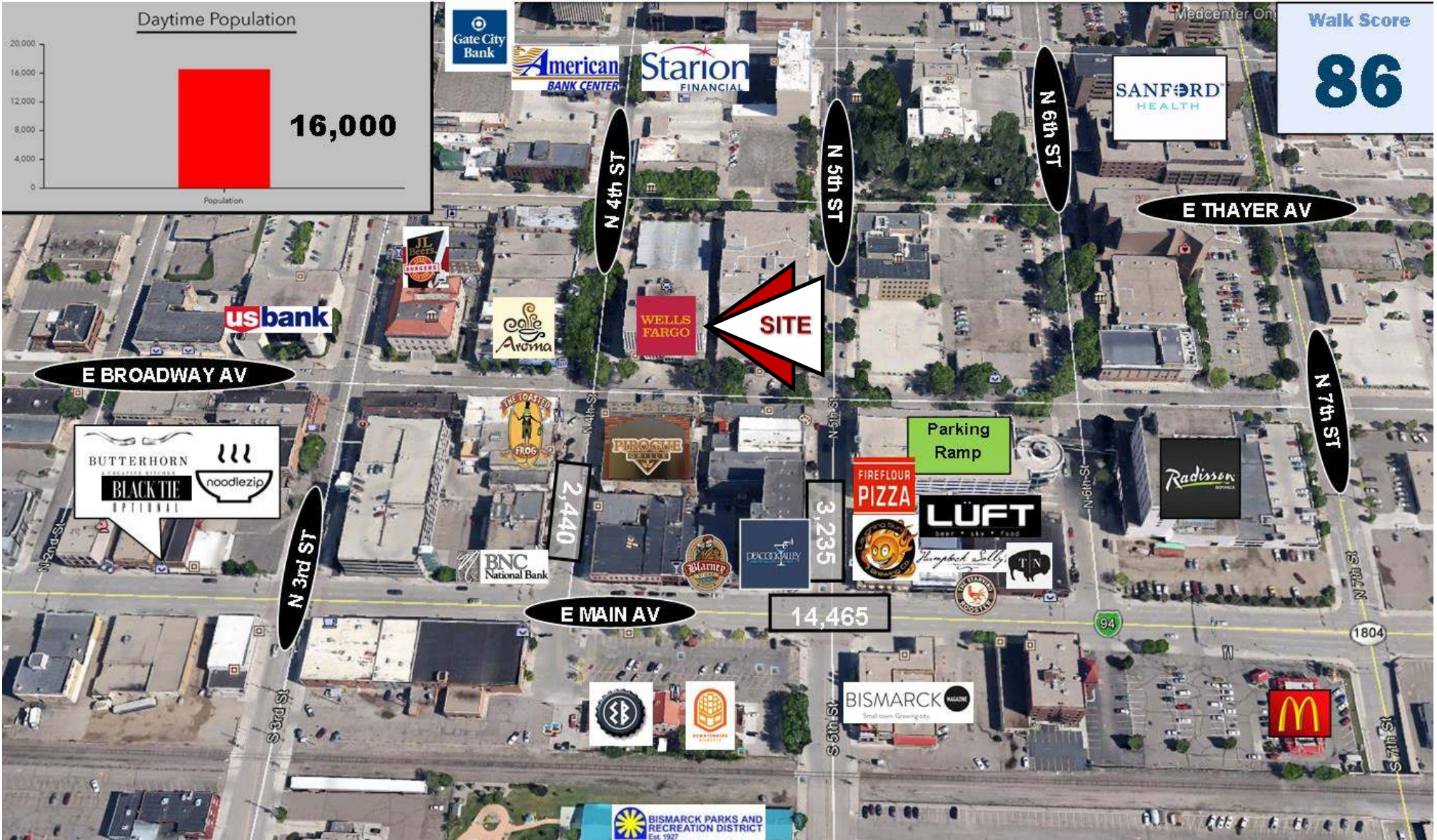
Downtown Bismarck

Daytime Population



Walk Score

86



Taylor Daniel | Vice President
Commercial Realtor®
Taylor@DanielCompanies.com

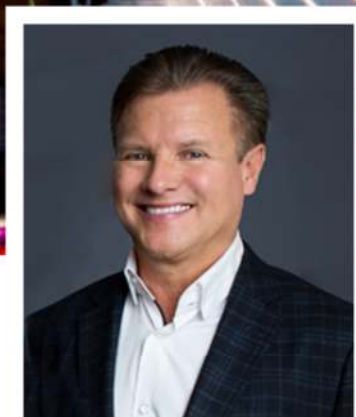
Bill Daniel | President
CCIM, Broker
Bill@DanielCompanies.com

DanielCompanies.com



DANIEL COMPANIES

The Leader in Commercial Real Estate



**Bill Daniel, CCIM | President
Commercial Broker**

701.220.2455

Bill@DanielCompanies.com



**Taylor Daniel | Vice President
Commercial Realtor®**

701.391.4262

Taylor@DanielCompanies.com

Serving commercial real estate clients with unmatched market knowledge, experience and a well-deserved reputation for integrity. They know the Bismarck-Mandan commercial real estate market better than anyone.

Powerful Team. Powerful Process. Powerful Results.