

Great 2nd Floor Office Space

1221 W Divide Ave. Suite 201 - Bismarck, ND

2,640 sf - \$12 psf = \$2,640 / mo.



Bill Daniel, CCIM, Broker

701.220.2455

Bill@DanielCompanies.com

Taylor Daniel, Commercial REALTOR®

701.391.4262

Taylor@DanielCompanies.com

DanielCompanies.com



Lease: \$2,640 per mo.

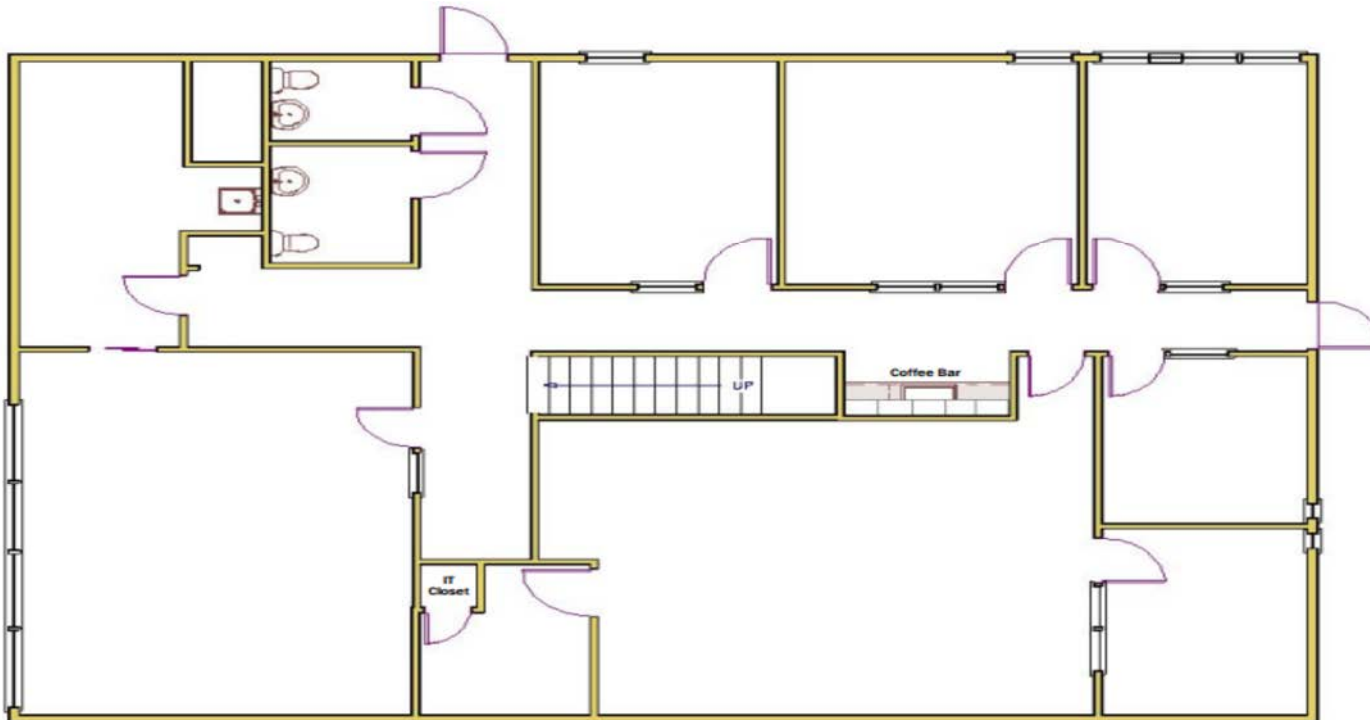
Full Service

\$12.00 psf - 2,640 sf

- 6 Private Offices
- Coffee Bar
- Located in desirable Northwest Corridor
- Ample Surface Parking

Potential Uses

- Professional Services
- Financial / Investment Firm
- Accounting Firm
- Insurance Agency
- Dental Clinic
- Medical Clinic
- Government Offices

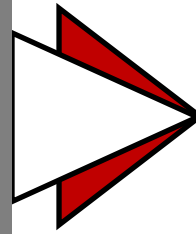


Bill Daniel CCIM, Broker
701.220.2455
Bill@DanielCompanies.com

Taylor Daniel Commercial REALTOR
701.391.4262
Taylor@DanielCompanies.com

DanielCompanies.com

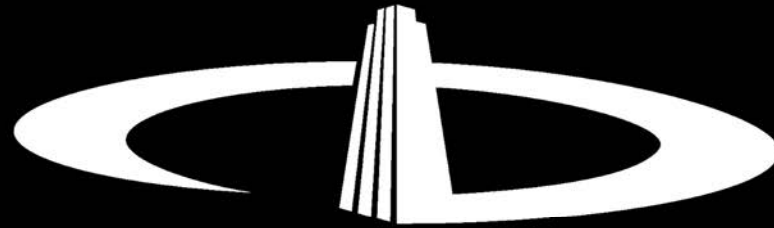
Rendering of possible signage for 2nd floor tenant on front of building.



Bill Daniel CCIM, Broker
701.220.2455
Bill@DanielCompanies.com

Taylor Daniel Commercial REALTOR
701.391.4262
Taylor@DanielCompanies.com

DanielCompanies.com



DANIEL COMPANIES

The Leader in Commercial Real Estate

Serving commercial real estate clients with unmatched market knowledge, experience, and a well-deserved reputation for integrity. They know the Bismarck-Mandan commercial real estate market better than anyone. This powerful team delivers powerful results.



Bill Daniel, CCIM, Broker
701.220.2455
Bill@DanielCompanies.com



Kyle Holwagner, CCIM, SIOR
701.400.5373
Kyle@DanielCompanies.com



Taylor Daniel, Commercial REALTOR®
701.391.4262
Taylor@DanielCompanies.com

701.223.8488
304 E ROSSER AVE #200
BISMARCK, ND 58501



ICSC CCIM SIOR
INDIVIDUAL MEMBERS

RETAIL • INVESTMENTS • OFFICE • INDUSTRIAL • SITE SELECTION • LEASING • BUILD TO SUIT • BROKERAGE