

Retail / Service / Medical Building

218 S 1st Street - Bismarck, ND - Near Kirkwood Mall & Downtown

Reduced to \$475,000!!

Walk Score
89



Taylor Daniel, Commercial REALTOR®

701.391.4262

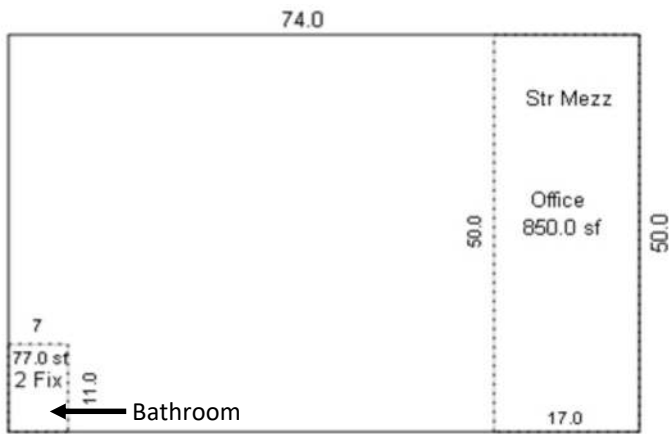
Taylor@DanielCompanies.com

Bill Daniel, CCIM, Broker

701.220.2455

Bill@DanielCompanies.com

DanielCompanies.com



Price: \$475,000

Lot Size: 11,250 sf

Building Size: 74' x 50'

- 3,700 sf - Retail / Office / Warehouse
- 850 sf - Mezzanine
- 4,550 sf Total
- Concrete Parking Areas
- Taxes 2018: \$7,234.05
- Specials:
 - Balance: \$16,122.29
 - Installments: \$1,900.64

- Built in 2010
- Zoned CG Commercial
- 10' x 14' Overhead Door
- Floor Drain
- Phase 3 Power
- 16' Sidewalls
- Steel Lined Walls

Potential Uses:

- Man Cave
- Salon / Spa
- Retail
- Medical
- Service
- Gym
- Building Product Showroom
- ** No Auto Repair Type Business



Taylor Daniel, Commercial REALTOR®

701.391.4262

Taylor@DanielCompanies.com

Bill Daniel, CCIM, Broker

701.220.2455

Bill@DanielCompanies.com

DanielCompanies.com



Main Ave.

Downtown



5,605 VPD

Front Ave.



Sweet Ave.



15,495 VPD

13,010 VPD



S. Washington St.



3rd St.



Kirkwood Mall



Taylor Daniel, Commercial REALTOR®
701.391.4262
Taylor@DanielCompanies.com

Bill Daniel, CCIM, Broker
701.220.2455
Bill@DanielCompanies.com

DanielCompanies.com



DANIEL COMPANIES

The Leader in Commercial Real Estate



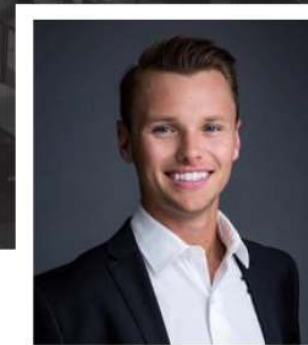
Bill Daniel
CCIM, Broker

701.220.2455
Bill@DanielCompanies.com



Kyle Holwagner
CCIM, SIOR

701.400.5373
Kyle@DanielCompanies.com



Taylor Daniel
Commercial REALTOR®

701.391.4262
Taylor@DanielCompanies.com

Serving commercial real estate clients with unmatched market knowledge, experience and a well-deserved reputation for integrity. They know the Bismarck-Mandan commercial real estate market better than anyone.

Powerful Team. Powerful Process. Powerful Results.