

Memorial Square Shopping Center

Phase II - 4524 Memorial Highway SE

Mandan, ND



Kyle Holwagner, CCIM, SIOR
701.400.5373
Kyle@DanielCompanies.com

Kristyn Steckler, Market Coordinator
701.527.0138
Kristyn@DanielCompanies.com

DanielCompanies.com



Phase II
 Approximately 13,000 SF
 Fall 2018 Completion
 Now Accepting LOIs

Phase II Executive Summary

Total Building SF: 12,900 sf

Space Available: 1,526 sf - 12,900 sf

- ◆ End-Cap with Drive-Thru Available
- ◆ Suites can be customized to meet square footage needs

Price: Starting at \$17.50 psf NNN
 (Call for Details)

Terms: 5 year

- ◆ High traffic, great visibility
- ◆ Great signage opportunity on building
- ◆ Ample parking for employees and customers

Potential User Groups:

- ◆ Bank / Financial
- ◆ Retail
- ◆ Fast Food
- ◆ Restaurants
- ◆ Professional Services
- ◆ Office
- ◆ Medical
- ◆ Fitness
- ◆ Service

Broker does not guarantee the information describing this property. Interested parties are advised to independently verify the information through personal inspectors or with appropriate professionals.



Kyle Holwagner, CCIM, SIOR
 701.400.5373
Kyle@DanielCompanies.com

Kristyn Steckler, Market Coordinator
 701.527.0138
Kristyn@DanielCompanies.com

DanielCompanies.com

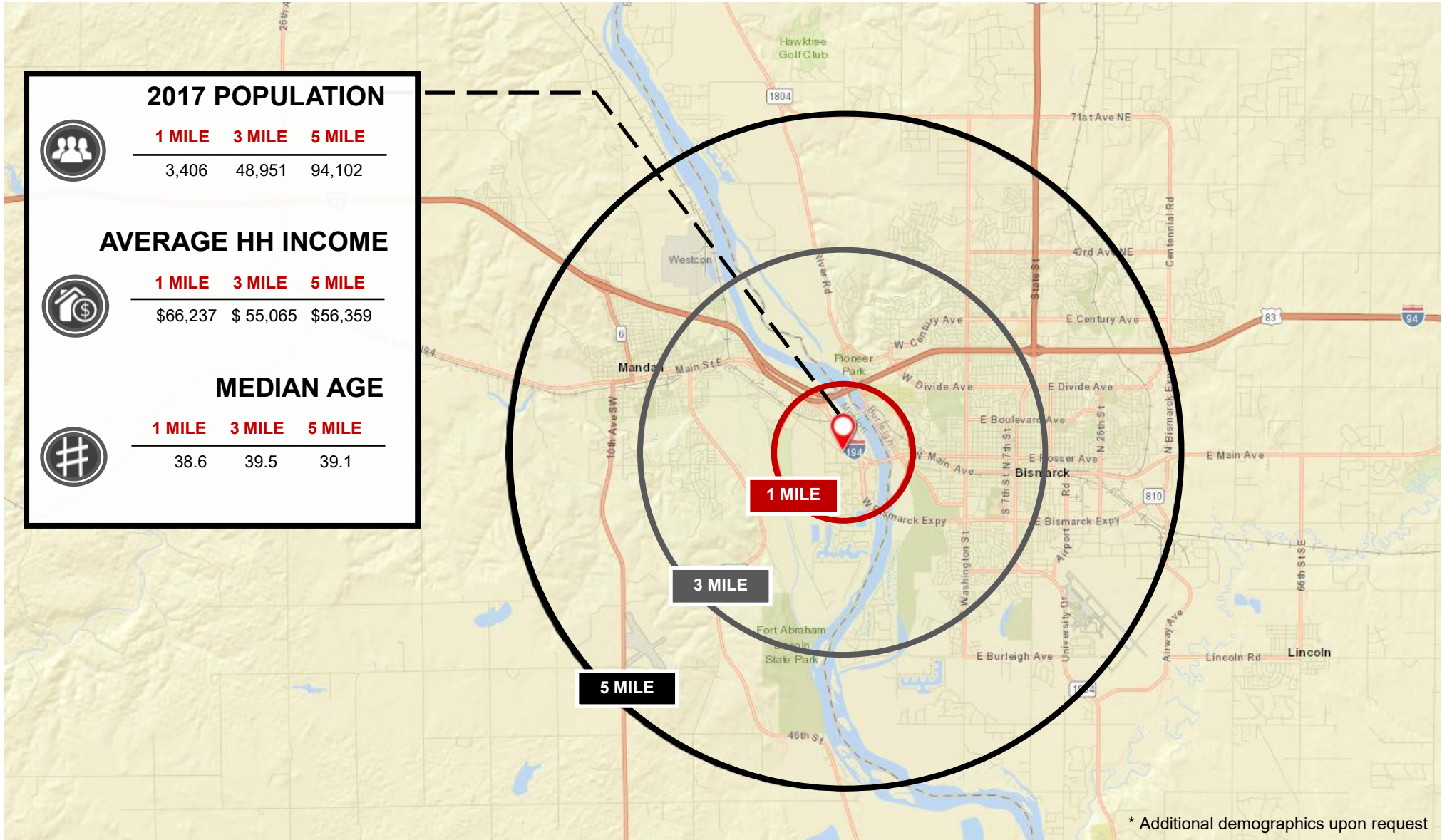


Kyle Holwagner, CCIM, SIOR
701.400.5373
Kyle@DanielCompanies.com

Kristyn Steckler, Market Coordinator
701.527.0138
Kristyn@DanielCompanies.com

DanielCompanies.com

Demographics



* Additional demographics upon request



Kyle Holwagner, CCIM, SIOR
 701.400.5373
Kyle@DanielCompanies.com

Kristyn Steckler, Market Coordinator
 701.527.0138
Kristyn@DanielCompanies.com

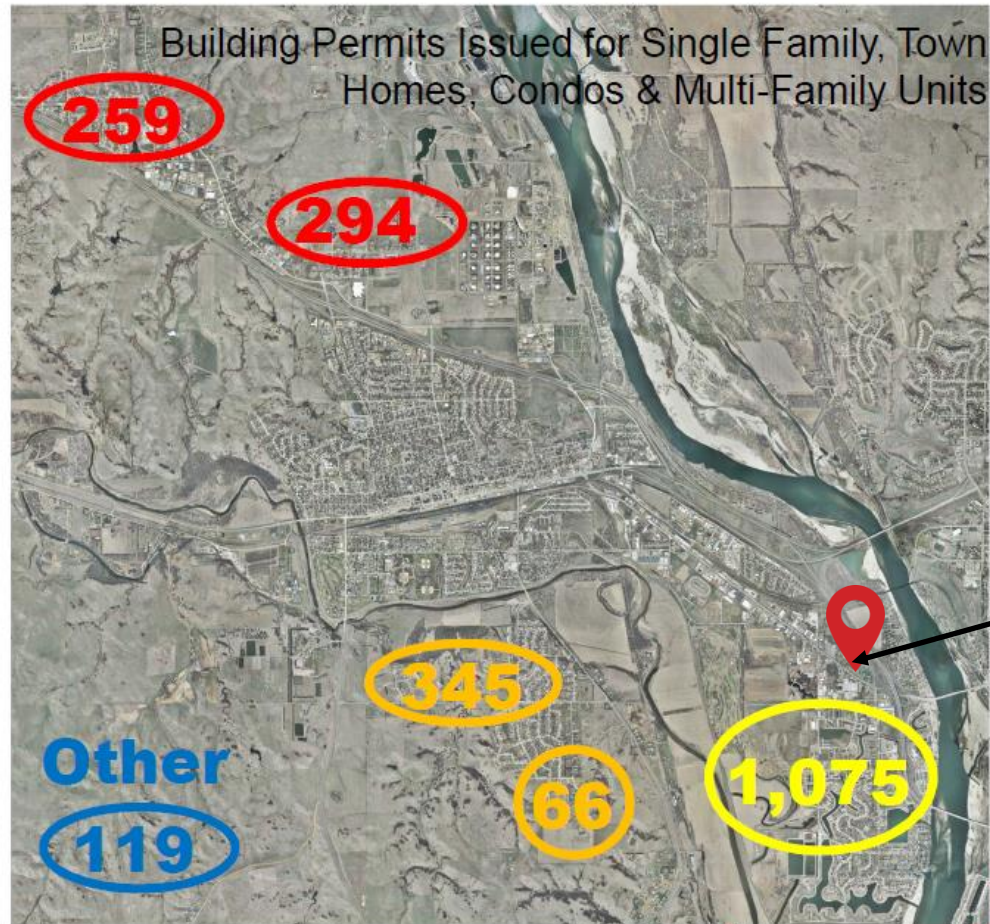
DanielCompanies.com



RESIDENTIAL GROWTH 2012-2016

2,157 units total

- North – 26%
 - Meadows
 - Meadow Ridge
 - Missouri Valley
- Southwest/South Central – 19%
 - Keidel's South Heart Terrace
 - Heart Ridge
 - Macedonia Hills
 - Lincoln Ridge
 - Plainview Heights
- Southeast – 50%
 - Lakewood
 - Bridgeview
 - Southbay
 - West Bay Estates
- Other – 6%



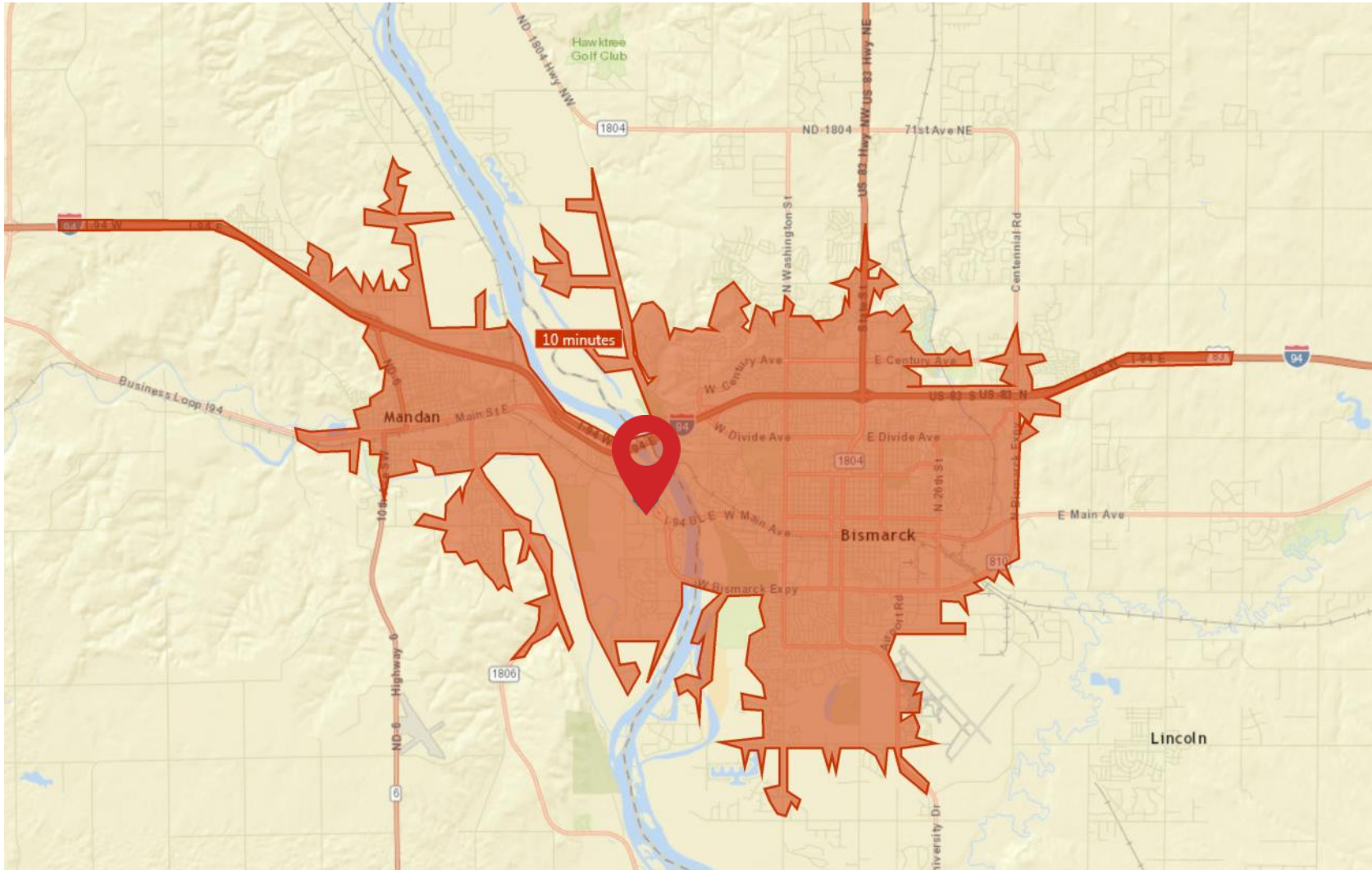
Kyle Holwagner, CCIM, SIOR
701.400.5373
Kyle@DanielCompanies.com

Kristyn Steckler, Market Coordinator
701.527.0138
Kristyn@DanielCompanies.com

DanielCompanies.com

Bismarck-Mandan Drive Time

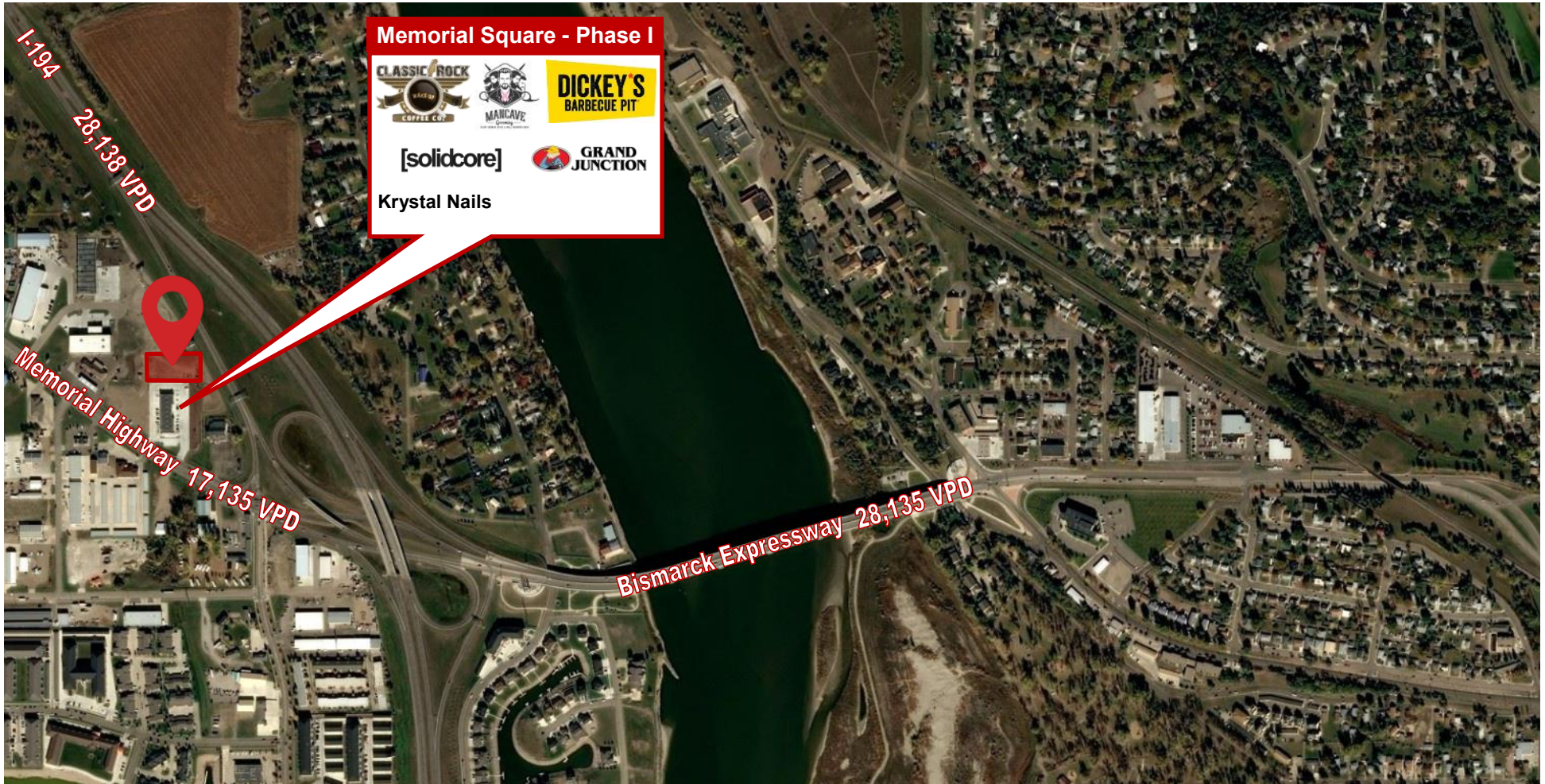
77% of the total population is within a 10 minute drive to the location.



Kyle Holwagner, CCIM, SIOR
701.400.5373
Kyle@DanielCompanies.com

Kristyn Steckler, Market Coordinator
701.527.0138
Kristyn@DanielCompanies.com

DanielCompanies.com



Kyle Holwagner, CCIM, SIOR
701.400.5373
Kyle@DanielCompanies.com

Kristyn Steckler, Market Coordinator
701.527.0138
Kristyn@DanielCompanies.com

DanielCompanies.com



DANIEL COMPANIES

The Leader in Commercial Real Estate

Serving commercial real estate clients with unmatched market knowledge, experience, and a well-deserved reputation for integrity. They know the Bismarck-Mandan commercial real estate market better than anyone. This powerful team delivers powerful results.



Bill Daniel, CCIM, Broker
701.220.2455
Bill@DanielCompanies.com



Kyle Holwagner, CCIM, SIOR
701.400.5373
Kyle@DanielCompanies.com



Taylor Daniel, Commercial REALTOR®
701.391.4262
Taylor@DanielCompanies.com

701.223.8488
304 E ROSSER AVE #200
BISMARCK, ND 58501



ICSC CCIM SIOR
INDIVIDUAL MEMBERS

RETAIL • INVESTMENTS • OFFICE • INDUSTRIAL • SITE SELECTION • LEASING • BUILD TO SUIT • BROKERAGE