

High Visibility Office Space

1035 S. Washington Street

Bismarck, ND



Kyle Holwagner, CCIM, SIOR

701.400.5373

Kyle@DanielCompanies.com

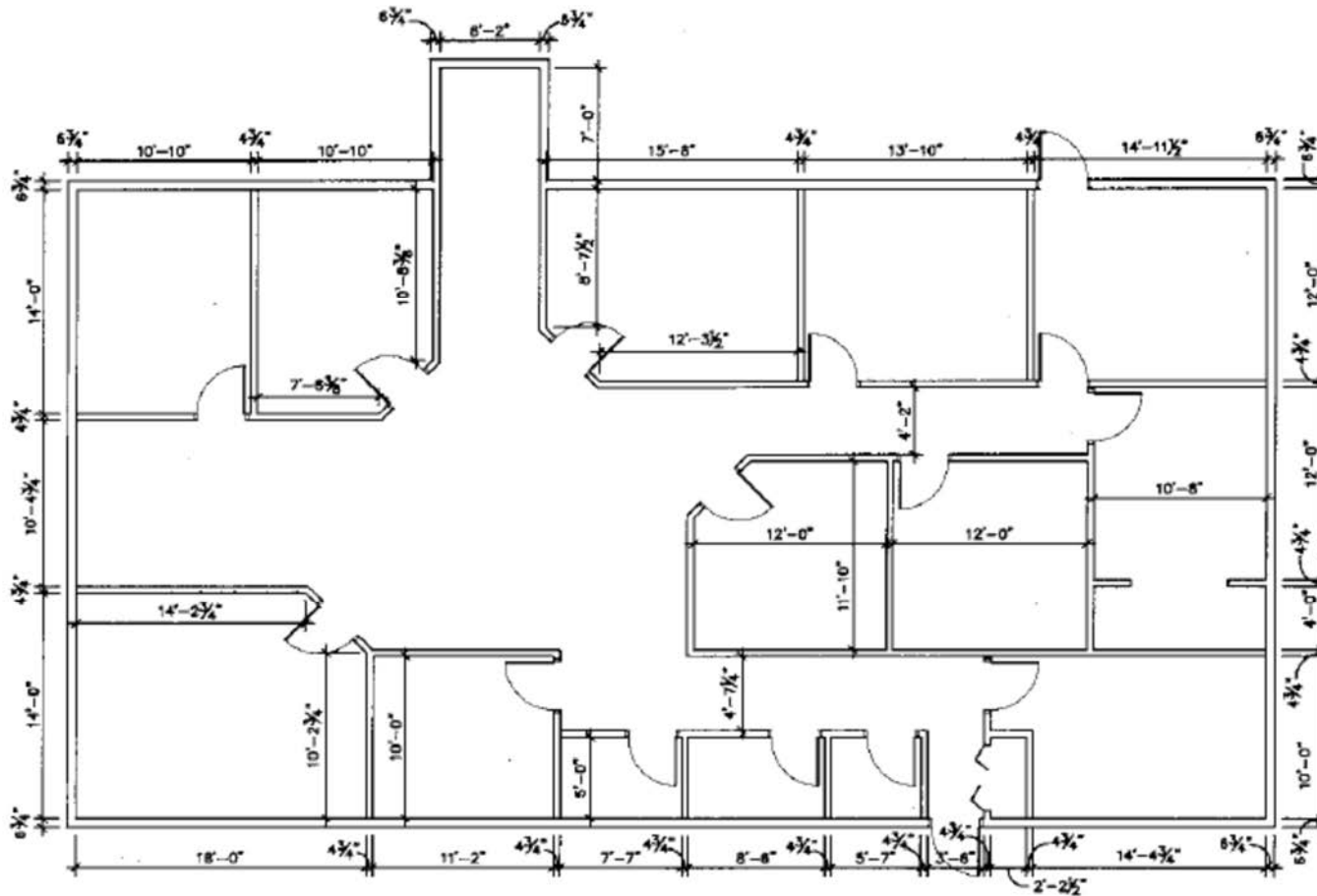
Kristyn Steckler, Market Coordinator

701.527.0138

Kristyn@DanielCompanies.com

DanielCompanies.com

Floor Plan



Lease: \$16.50 psf

- Total SF: 2,960 sf
- Lot: 57,385 sf
- 10 Offices
- Breakroom with Kitchenette
- Reception Area
- Large Conference Room
- (2) Private Restrooms
- Large Daylight windows
- 200 amp
- Signage Available



Kyle Holwagner, CCIM, SIOR
701.400.5373
Kyle@DanielCompanies.com

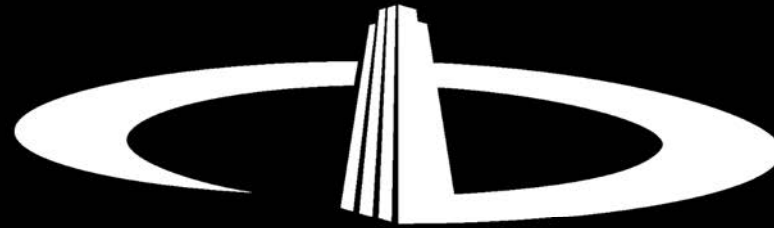
Kristyn Steckler, Market Coordinator
701.527.0138
Kristyn@DanielCompanies.com



Kyle Holwagner, CCIM, SIOR
701.400.5373
Kyle@DanielCompanies.com

Kristyn Steckler, Market Coordinator
701.527.0138
Kristyn@DanielCompanies.com

DanielCompanies.com



DANIEL COMPANIES

The Leader in Commercial Real Estate

Serving commercial real estate clients with unmatched market knowledge, experience, and a well-deserved reputation for integrity. They know the Bismarck-Mandan commercial real estate market better than anyone. This powerful team delivers powerful results.



Bill Daniel, CCIM, Broker
701.220.2455
Bill@DanielCompanies.com



Kyle Holwagner, CCIM, SIOR
701.400.5373
Kyle@DanielCompanies.com



Taylor Daniel, Commercial REALTOR®
701.391.4262
Taylor@DanielCompanies.com

701.223.8488
304 E ROSSER AVE #200
BISMARCK, ND 58501



ICSC CCIM SIOR
INDIVIDUAL MEMBERS