

# North Office / Daycare Building

1911 N 11th Street - Bismarck, ND

Lease: \$13.00 psf

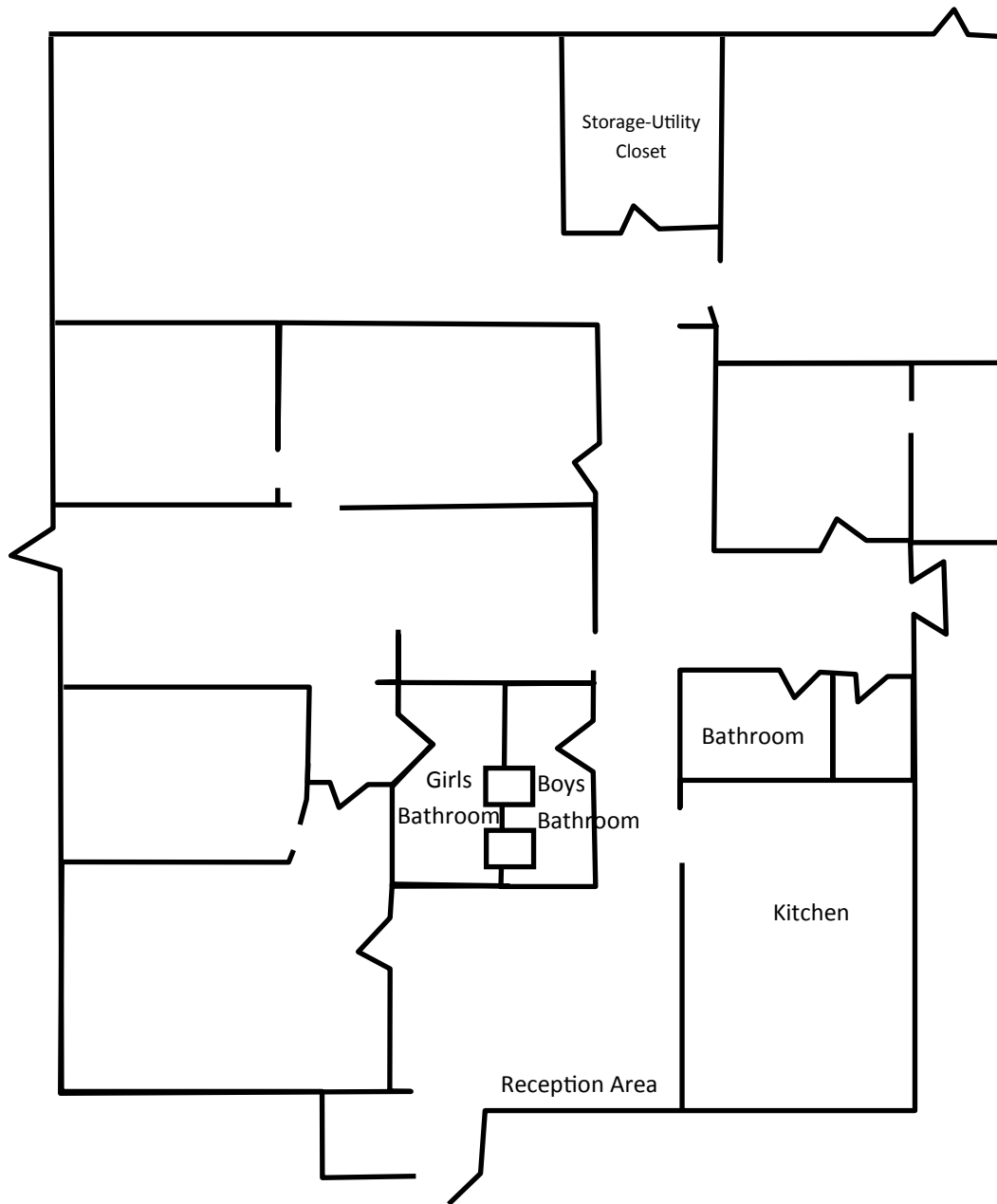


**Taylor Daniel, Commercial REALTOR®**

701.391.4262

[Taylor@DanielCompanies.com](mailto:Taylor@DanielCompanies.com)

[DanielCompanies.com](http://DanielCompanies.com)



**Lease: \$13.00 psf - Tenant pays all utilities**

-3,280 sf - \$3,553 / mo.

- On-site Parking
- Reception Area
- Kitchen Area
- 3 Bathrooms
- Backyard Area
- Centrally located
- Easy access, Near I-94

**Tenant Responsibilities**

- Utilities
- Janitorial
- Interior Maintenance
- Snow Removal and Lawn Care
- Garbage

**Landlord Responsibilities**

- Real Estate Taxes
- Building Insurance
- Exterior Building Maintenance
- Parking Lot Maintenance



**Taylor Daniel, Commercial REALTOR®**

701.391.4262

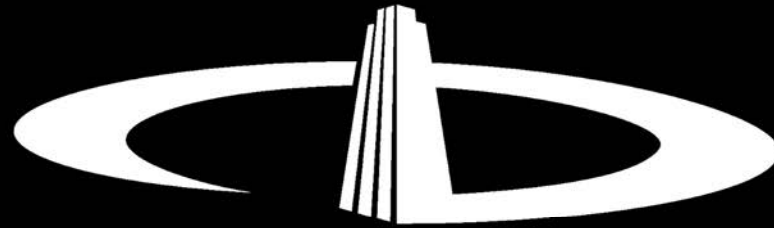
[Taylor@DanielCompanies.com](mailto:Taylor@DanielCompanies.com)

[DanielCompanies.com](http://DanielCompanies.com)



Taylor Daniel, Commercial REALTOR®  
701.391.4262  
[Taylor@DanielCompanies.com](mailto:Taylor@DanielCompanies.com)

[DanielCompanies.com](http://DanielCompanies.com)



# DANIEL COMPANIES

The Leader in Commercial Real Estate

Serving commercial real estate clients with unmatched market knowledge, experience, and a well-deserved reputation for integrity. They know the Bismarck-Mandan commercial real estate market better than anyone. This powerful team delivers powerful results.



**Bill Daniel, CCIM, Broker**  
701.220.2455  
Bill@DanielCompanies.com



**Kyle Holwagner, CCIM, SIOR**  
701.400.5373  
Kyle@DanielCompanies.com



**Taylor Daniel, Commercial REALTOR®**  
701.391.4262  
Taylor@DanielCompanies.com

701.223.8488  
304 E ROSSER AVE #200  
BISMARCK, ND 58501



ICSC CCIM SIOR  
INDIVIDUAL MEMBERS

RETAIL • INVESTMENTS • OFFICE • INDUSTRIAL • SITE SELECTION • LEASING • BUILD TO SUIT • BROKERAGE