

Grand Pacific Center

400 E Broadway Ave - Ste. 27 Bismarck, ND

363 sf - Lower Level - \$394 mo.



Taylor Daniel, Commercial REALTOR®
701.391.4262
Taylor@DanielCompanies.com

Bill Daniel, CCIM, Broker
701.220.2455
Bill@DanielCompanies.com

DanielCompanies.com

Potential Services

- Professional Services
- Government Offices
- Accounting Firm
- Legal Offices
- Medical Offices
- Engineering Firm

Located Downtown Bismarck Near

- Federal Building
 - US Post Office
 - Banks
 - Professional Buildings
 - City / County Building
 - Burleigh County Courthouse
 - Restaurants
 - Bismarck Civic & Convention Center
 - Kirkwood Mall
 - Wells Fargo Building
 - Sanford Health
- In the heart of downtown Bismarck
 - Across the street from City Parking Ramp - \$56 / mo. per space
 - Walking distance to many downtown restaurants / bars
 - Easy access to Bismarck Event Center and Kirkwood mall
 - Tenant provides financial, credit review required

Lease: \$13.00 psf

- Lease Space: 363 sf available on Lower Level / \$394 mo.
- 3 Year Lease
- Full Service Lease
- Shared Conference Room on 3rd Floor
- Professional & Spacious Lobby
- Two (2) Elevators & Escalators
- Great Location and View - Corner of N 4th St and Broadway Ave
- Near City Parking Ramps
- Vacant & Available Now

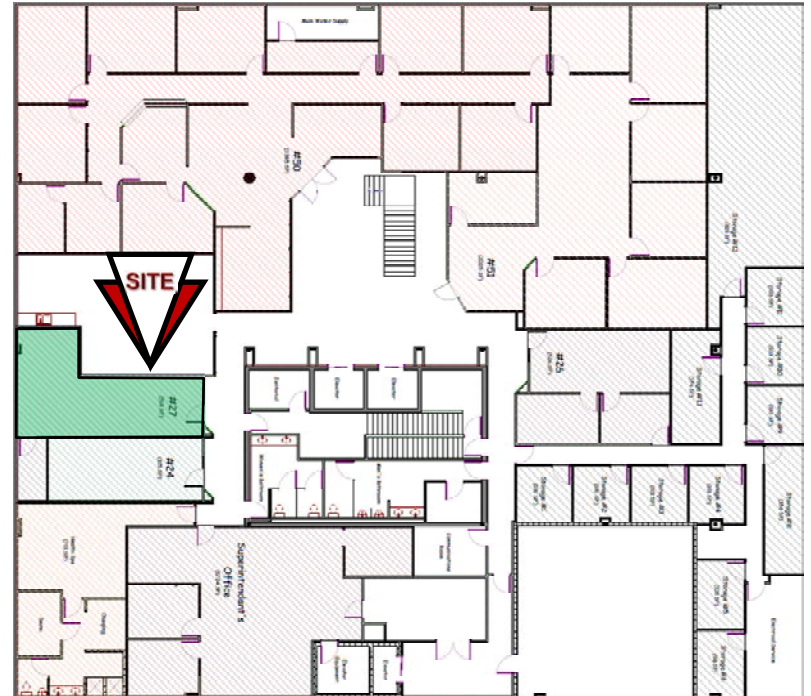
Broker does not guarantee the information describing this property. Interested parties are advised to independently verify the information through personal inspectors or with appropriate professionals.



Taylor Daniel, Commercial REALTOR®
701.391.4262
Taylor@DanielCompanies.com

Bill Daniel, CCIM, Broker
701.220.2455
Bill@DanielCompanies.com

DanielCompanies.com





DANIEL COMPANIES

The Leader in Commercial Real Estate

Serving commercial real estate clients with unmatched market knowledge, experience, and a well-deserved reputation for integrity. They know the Bismarck-Mandan commercial real estate market better than anyone. This powerful team delivers powerful results.



Bill Daniel, CCIM, Broker
701.220.2455
Bill@DanielCompanies.com



Kyle Holwagner, CCIM, SIOR
701.400.5373
Kyle@DanielCompanies.com



Taylor Daniel, Commercial REALTOR®
701.391.4262
Taylor@DanielCompanies.com

701.223.8488
304 E ROSSER AVE #200
BISMARCK, ND 58501



ICSC CCIM SIOR
INDIVIDUAL MEMBERS

RETAIL • INVESTMENTS • OFFICE • INDUSTRIAL • SITE SELECTION • LEASING • BUILD TO SUIT • BROKERAGE