

# City Center Plaza

418 E Broadway Ave., Lower Level - Bismarck, ND

2,659 sf - \$9.95 psf / \$2,204.75 Mo.



**Taylor Daniel | Vice President**  
Commercial Realtor®  
[Taylor@DanielCompanies.com](mailto:Taylor@DanielCompanies.com)

**Bill Daniel | President**  
CCIM, Broker  
[Bill@DanielCompanies.com](mailto:Bill@DanielCompanies.com)

[DanielCompanies.com](http://DanielCompanies.com)

## Located Downtown Bismarck Near:

- Federal Building
- City / County Building
- Burleigh County Courthouse
- US Post Office
- Banks
- Professional Buildings
- Restaurants
- Bismarck Event Center
- Kirkwood Regional Mall
- Wells Fargo Building
- Sanford Health

## Property Highlights:

- In the heart of downtown Bismarck
- Across the street from City Parking Ramp
- Walking distance to many downtown restaurants / bars
- Easy Access to Bismarck Event Center and Kirkwood Mall

Broker does not guarantee the information describing this property. Interested parties are advised to independently verify the information through personal inspectors or with appropriate professionals.

**Lease: \$2,204.75 / mo.**  
**\$9.95 psf - Full Service**

- Space Available: 2,659 sf
- Private Offices
- 3 Year Min Lease Term
- Common Restroom
- Common Conference Room
- Elevator
- 10 Parking Spaces Included
- Great Corner Location: Corner of N 5th St and E Broadway Ave
- Can be subdivided

## Potential Uses:

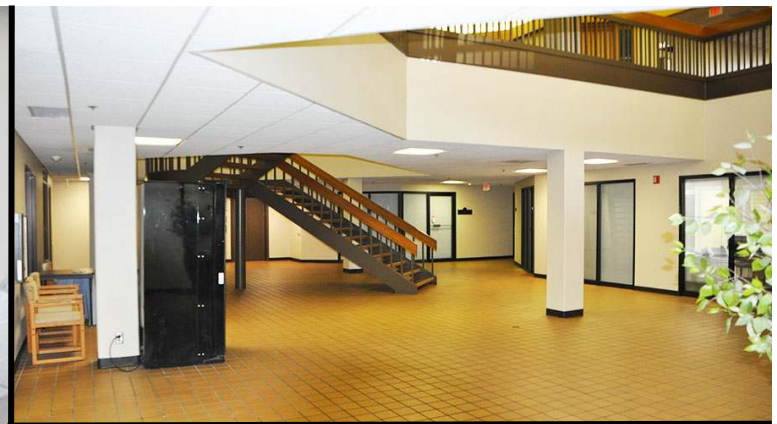
- Professional Services
- Medical Office
- Financial Office
- Legal Office
- Accounting Firm
- Government Offices



**Taylor Daniel | Vice President**  
Commercial Realtor®  
[Taylor@DanielCompanies.com](mailto:Taylor@DanielCompanies.com)

**Bill Daniel | President**  
CCIM, Broker  
[Bill@DanielCompanies.com](mailto:Bill@DanielCompanies.com)

[DanielCompanies.com](http://DanielCompanies.com)

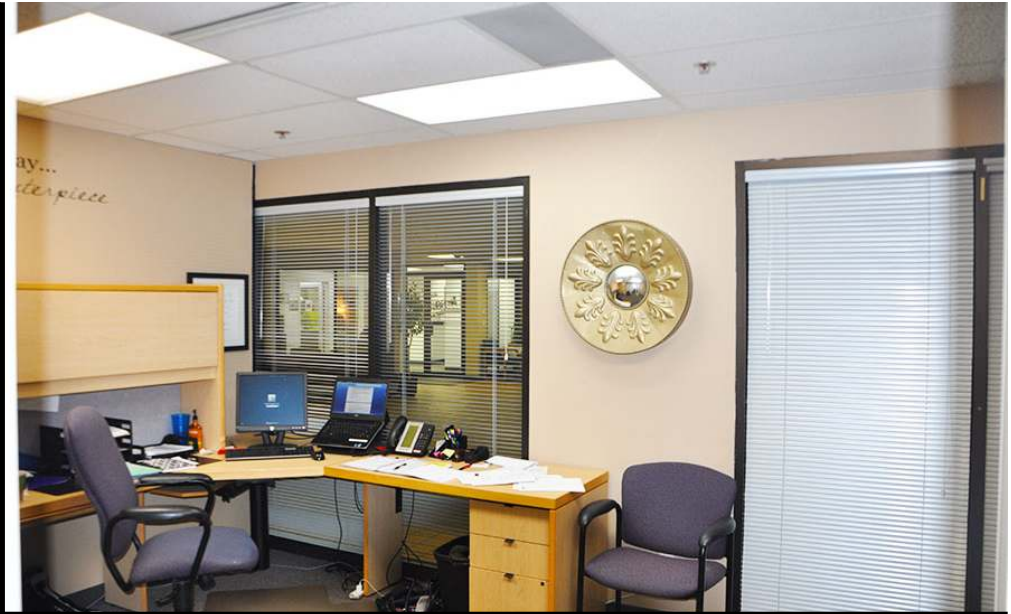


**Taylor Daniel | Vice President**  
Commercial Realtor®  
[Taylor@DanielCompanies.com](mailto:Taylor@DanielCompanies.com)

**Bill Daniel | President**  
CCIM, Broker  
[Bill@DanielCompanies.com](mailto:Bill@DanielCompanies.com)

[DanielCompanies.com](http://DanielCompanies.com)

# Shared Conference Room

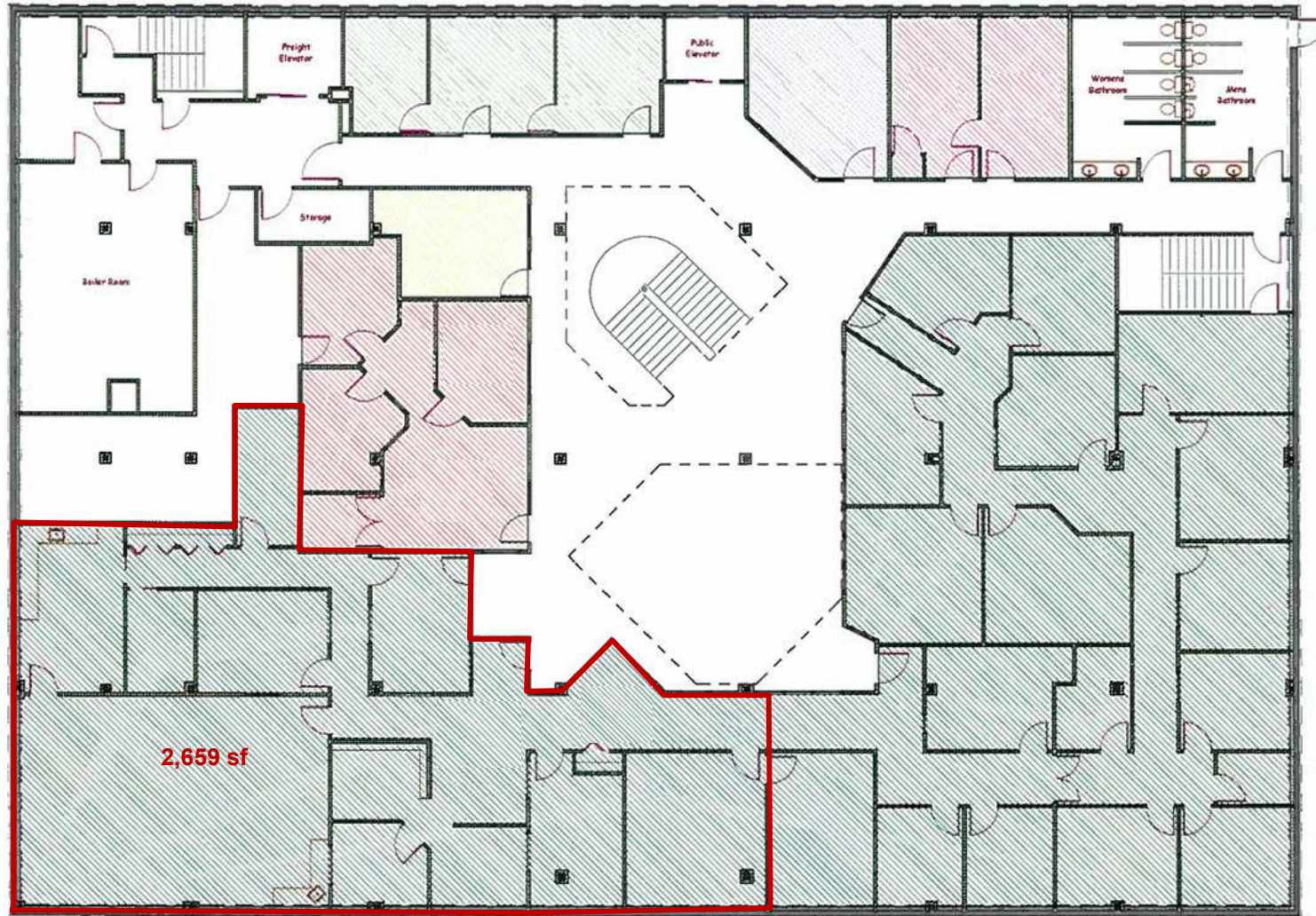


**Taylor Daniel | Vice President**  
Commercial Realtor®  
[Taylor@DanielCompanies.com](mailto:Taylor@DanielCompanies.com)

**Bill Daniel | President**  
CCIM, Broker  
[Bill@DanielCompanies.com](mailto:Bill@DanielCompanies.com)

[DanielCompanies.com](http://DanielCompanies.com)

# City Center Plaza - 418 East Broadway Avenue - Bismarck, North Dakota



**Lower Level Layout**

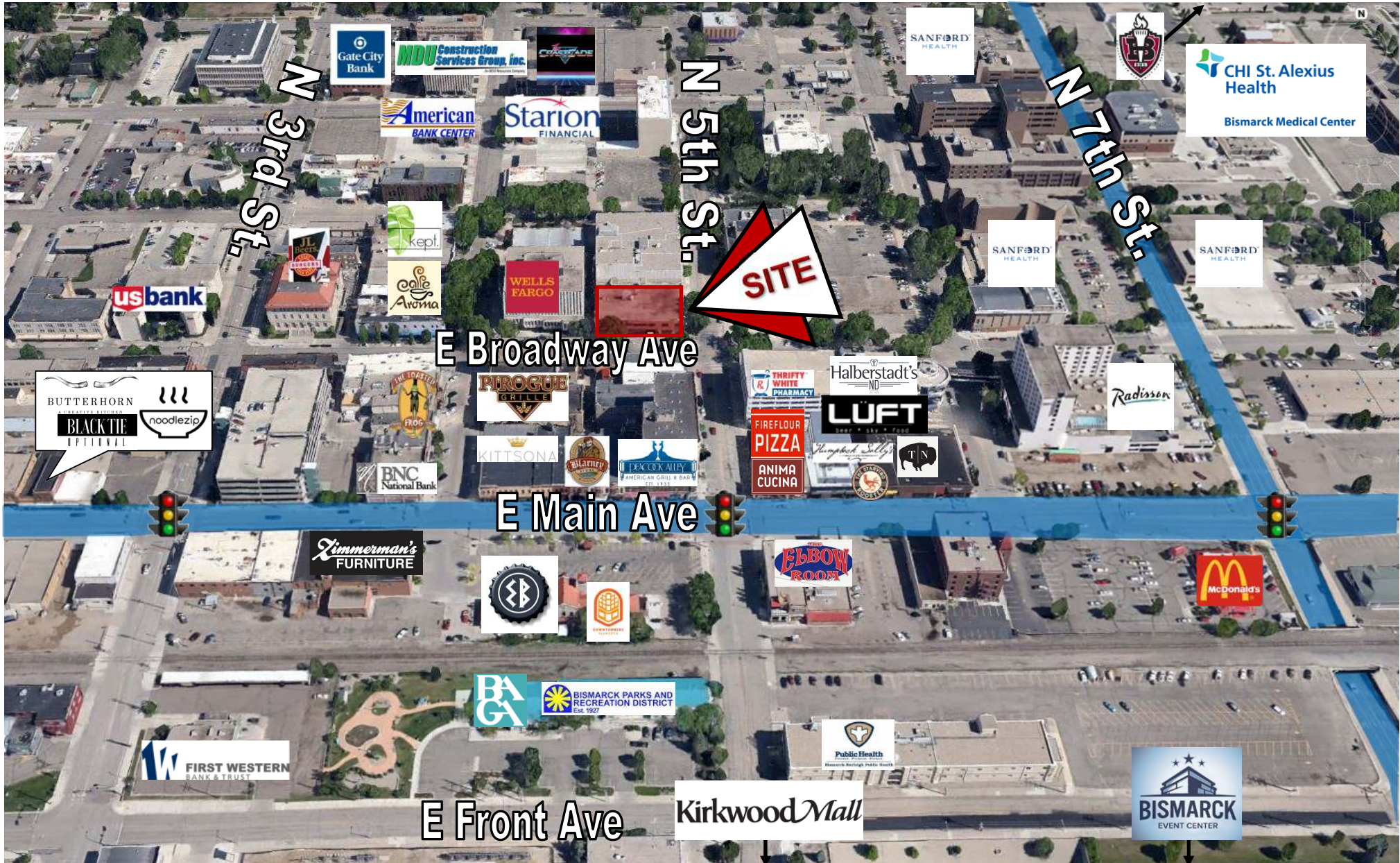
# Join Exciting Downtown Bismarck!



Taylor Daniel | Vice President  
 Commercial Realtor®  
[Taylor@DanielCompanies.com](mailto:Taylor@DanielCompanies.com)

Bill Daniel | President  
 CCIM, Broker  
[Bill@DanielCompanies.com](mailto:Bill@DanielCompanies.com)

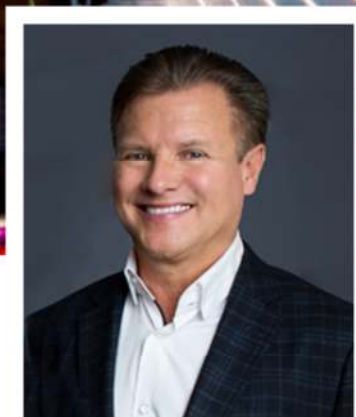
[DanielCompanies.com](http://DanielCompanies.com)





# DANIEL COMPANIES

The Leader in Commercial Real Estate



**Bill Daniel, CCIM | President  
Commercial Broker**

701.220.2455

Bill@DanielCompanies.com



**Taylor Daniel | Vice President  
Commercial Realtor®**

701.391.4262

Taylor@DanielCompanies.com

Serving commercial real estate clients with unmatched market knowledge, experience and a well-deserved reputation for integrity. They know the Bismarck-Mandan commercial real estate market better than anyone.

**Powerful Team. Powerful Process. Powerful Results.**