

Professional Service Building Space

1431 Interstate Loop - Bismarck, ND

\$16.50 psf - 2,837 sf



Kyle Holwagner, CCIM, SIOR
701.400.5373
Kyle@DanielCompanies.com

Kristyn Steckler, Senior Client Coordinator
701.527.0138
Kristyn@DanielCompanies.com

DanielCompanies.com

Executive Summary for Lease

| | |
|-----------------------------------|--|
| Address: | 1431 Interstate Loop, Bismarck, ND |
| Date Available: | September 1st, 2018 |
| Lease Term: | Minimum 3 Years |
| Lease Rate: | \$16.50 psf Modified Gross |
| Approximate SF: | 2,837 sf |
| Parking: | Large Surfaced Parking Lot |
| Tenant Responsibilities: | Electrical, Heat, Janitorial, Prorata Snow Removal |
| Landlord Responsibilities: | Structure, Roof, Taxes, Insurance |

Broker does not guarantee the information describing this property. Interested parties are advised to independently verify the information through personal inspectors or with appropriate professionals.

Lease: \$16.50 psf

- Available 9/1/2018
- Large Surfaced Parking Lot
- Architect Designed Building
- Class A Office / Professional Service Building



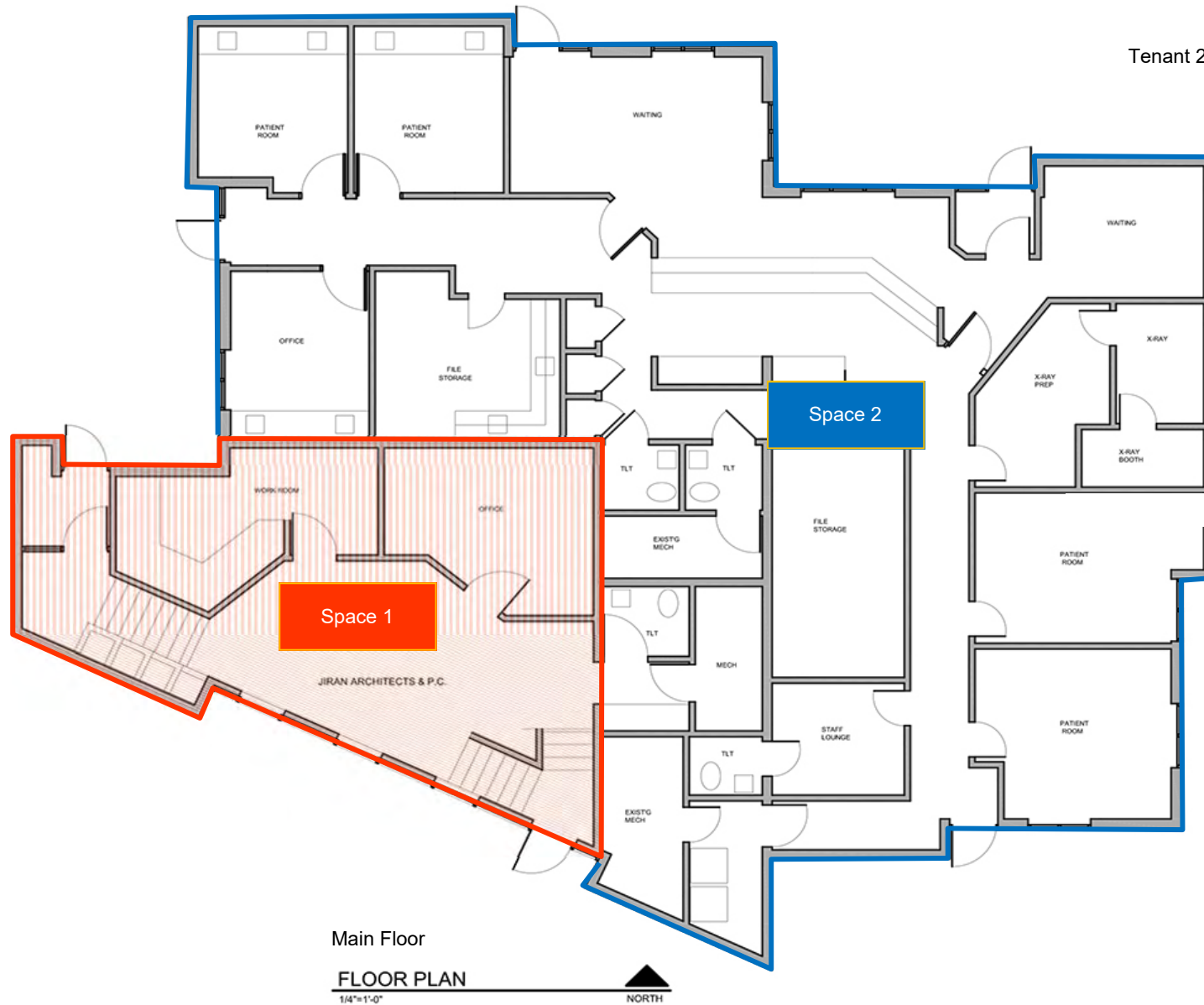
Kyle Holwagner, CCIM, SIOR
701.400.5373
Kyle@DanielCompanies.com

Kristyn Steckler, Senior Client Coordinator
701.527.0138
Kristyn@DanielCompanies.com

DanielCompanies.com

Floor Plan

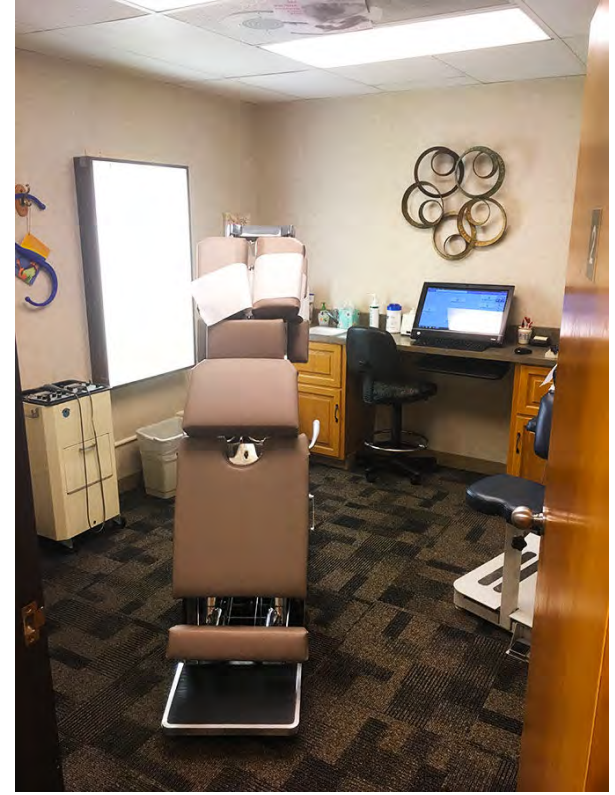
Tenant 2: 2,837 sf



Kyle Holwagner, CCIM, SIOR
701.400.5373
Kyle@DanielCompanies.com

Kristyn Steckler, Senior Client Coordinator
701.527.0138
Kristyn@DanielCompanies.com

DanielCompanies.com



Space 2

Broker does not guarantee the information describing this property. Interested parties are advised to independently verify the information through personal inspectors or with appropriate professionals.



Kyle Holwagner, CCIM, SIOR
701.400.5373
Kyle@DanielCompanies.com

Kristyn Steckler, Senior Client Coordinator
701.527.0138
Kristyn@DanielCompanies.com

DanielCompanies.com



Kyle Holwagner, CCIM, SIOR
701.400.5373
Kyle@DanielCompanies.com

Kristyn Steckler, Senior Client Coordinator
701.527.0138
Kristyn@DanielCompanies.com

DanielCompanies.com

INTERSTATE AVE



Kyle Holwagner, CCIM, SIOR
701.400.5373
Kyle@DanielCompanies.com

Kristyn Steckler, Senior Client Coordinator
701.527.0138
Kristyn@DanielCompanies.com

DanielCompanies.com



DANIEL COMPANIES

The Leader in Commercial Real Estate



Kyle Holwagner
CCIM, SIOR

701.400.5373
Kyle@DanielCompanies.com



Kristyn Steckler
REALTOR®

701.527.0138
Kristyn@DanielCompanies.com

Serving commercial real estate clients with unmatched market knowledge, experience and a well-deserved reputation for integrity. They know the Bismarck-Mandan commercial real estate market better than anyone.

Powerful Team. Powerful Process. Powerful Results.