

Office / Professional Space

1147 W Capitol Ave—Bismarck, ND

\$19.00 psf + Operating Expenses - 5,162 sf



Kyle Holwagner, CCIM, SIOR
701.400.5373
Kyle@DanielCompanies.com

Kristyn Steckler, Senior Client Coordinator
701.527.0138
Kristyn@DanielCompanies.com

DanielCompanies.com

Executive Summary for Lease

Address:	1147 W Capitol Ave - Bismarck, ND 58501
Date Available:	Spring 2019
Lease Term:	Minimum 3 Year
Lease Rate:	\$19.00 psf + Operating Expenses / \$8,173.00 mo.
Approximate SF:	5,162 sf - Can be subdivided
Parking:	On-Site
Tenant Responsibilities:	Utilities, Janitorial, Tenant Insurance, Prorata Share of Building Insurance, Taxes, and Common Area Maintenance
Landlord Responsibilities:	Building Insurance

Broker does not guarantee the information describing this property. Interested parties are advised to independently verify the information through personal inspectors or with appropriate professionals.



**Lease: \$19.00 psf /
\$8,173.00 mo.**

- Estimated operating expenses \$4.50 - \$5.00 psf
- New construction
- Great location
- Warm vanilla shell condition
- 1 tenant can be subdivided to 2
- Large open space
- Building signage TBD
- Tenant Allowance TBD
- Ample parking for employees and customers

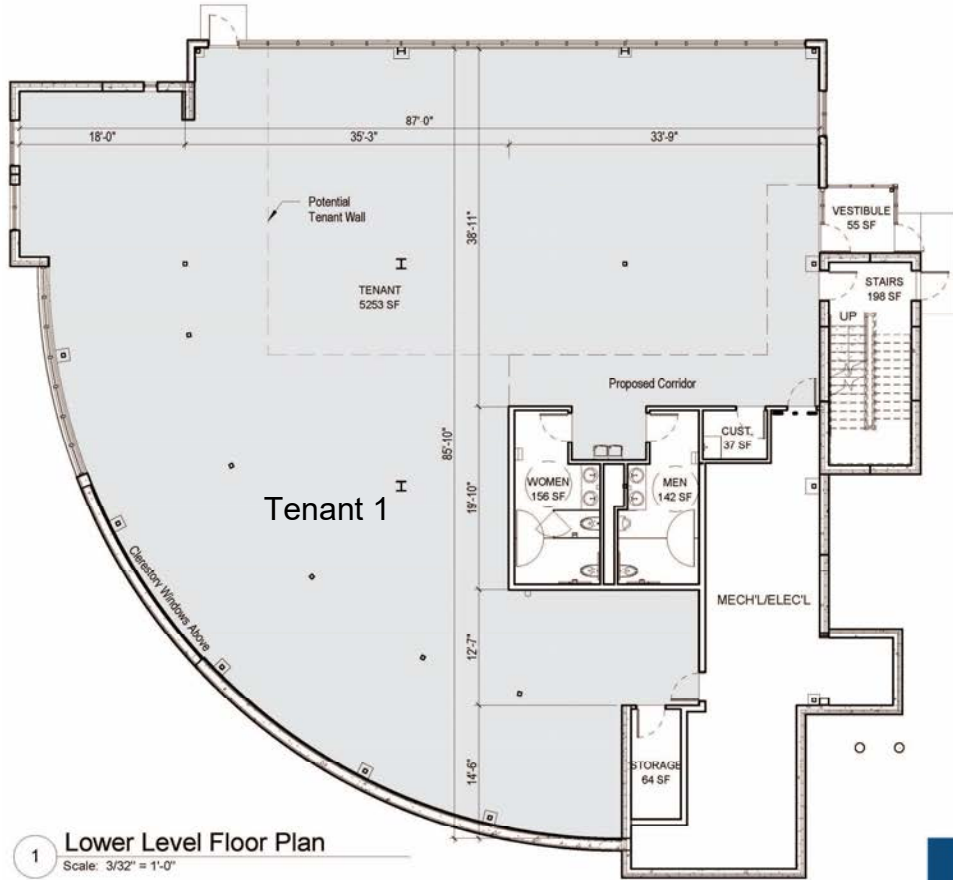


Kyle Holwagner, CCIM, SIOR
701.400.5373
Kyle@DanielCompanies.com

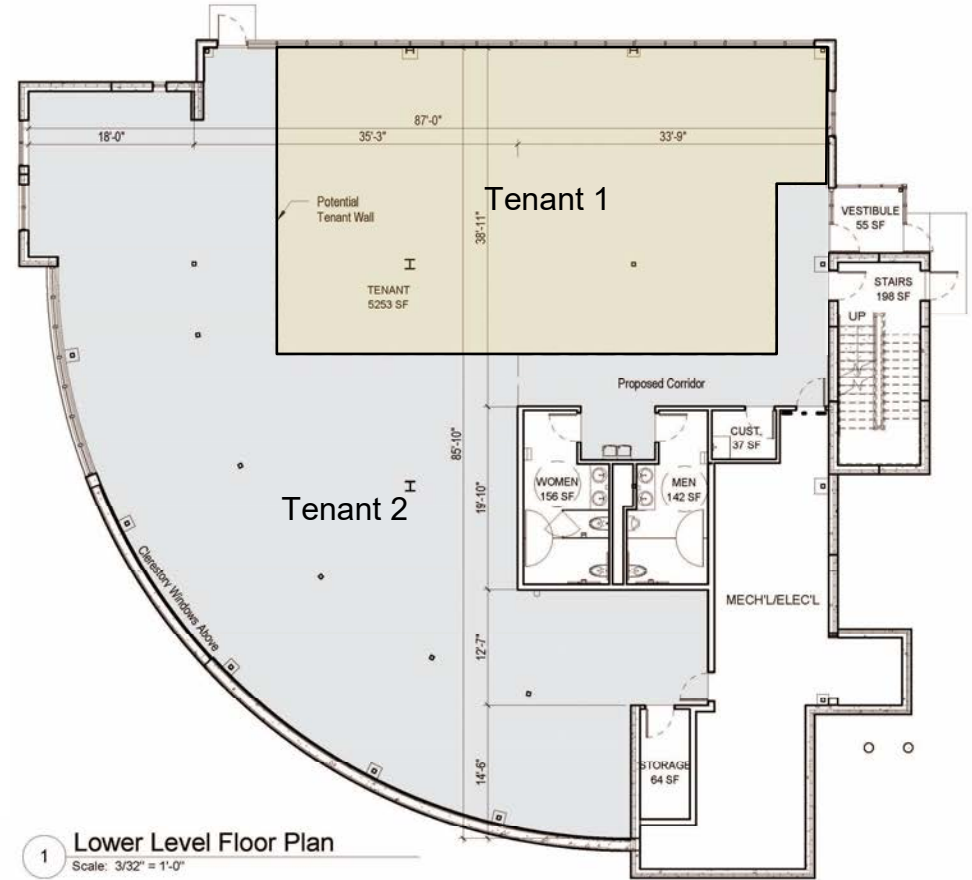
Kristyn Steckler, Senior Client Coordinator
701.527.0138
Kristyn@DanielCompanies.com

Floor Plan

Single Tenant



Optional Subdivision







DANIEL COMPANIES

The Leader in Commercial Real Estate



Bill Daniel
CCIM, Broker

701.220.2455
Bill@DanielCompanies.com



Kyle Holwagner
CCIM, SIOR

701.400.5373
Kyle@DanielCompanies.com



Taylor Daniel
Commercial REALTOR®

701.391.4262
Taylor@DanielCompanies.com

Serving commercial real estate clients with unmatched market knowledge, experience and a well-deserved reputation for integrity. They know the Bismarck-Mandan commercial real estate market better than anyone.

Powerful Team. Powerful Process. Powerful Results.