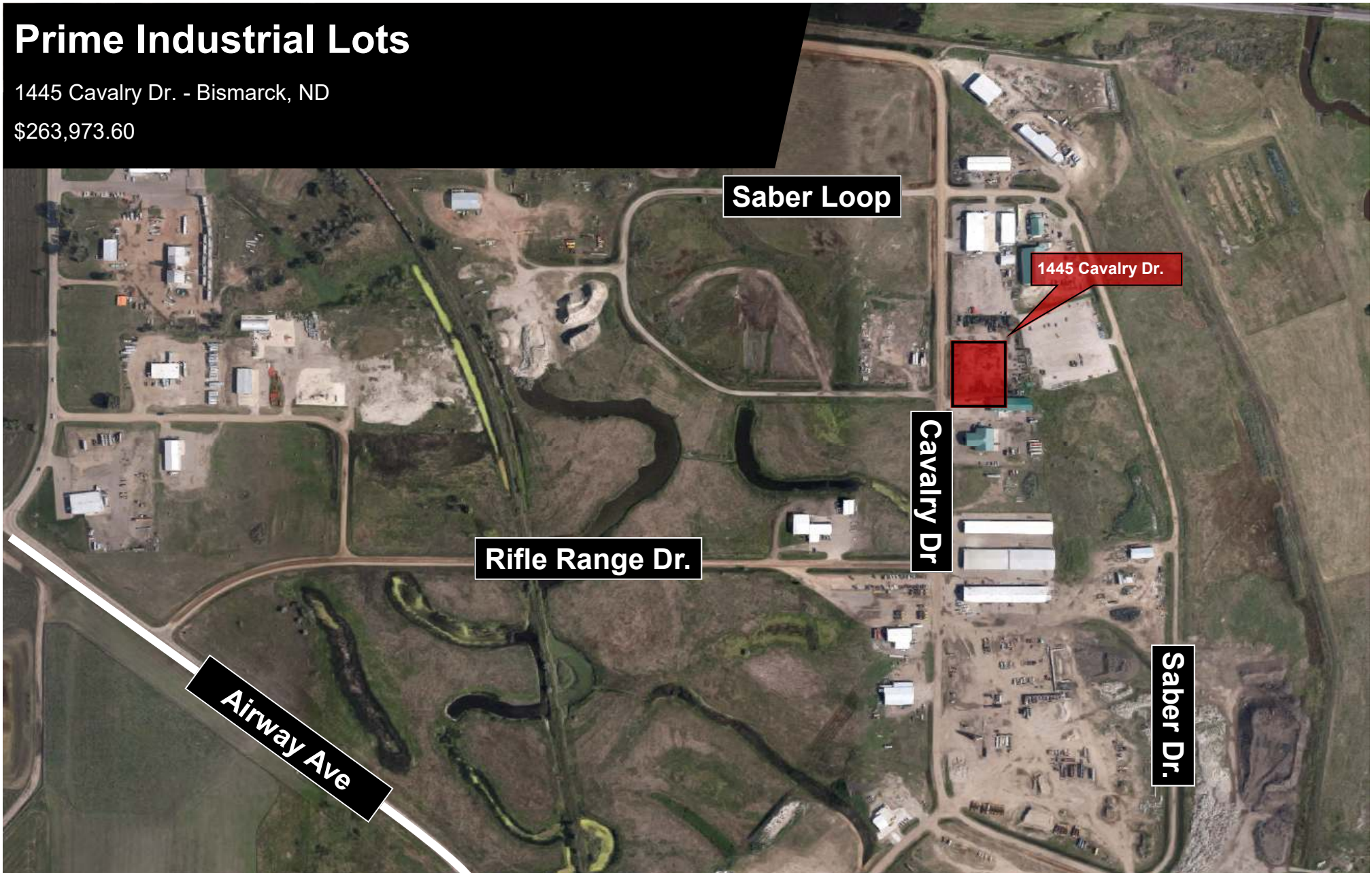


Prime Industrial Lots

1445 Cavalry Dr. - Bismarck, ND

\$263,973.60



Kyle Holwagner, CCIM, SIOR
701.400.5373
Kyle@DanielCompanies.com

Kristyn Steckler, Senior Client Coordinator
701.527.0138
Kristyn@DanielCompanies.com

DanielCompanies.com

Area Businesses

- Mariner Construction
- Northern Coatings
- Magnum Trucking
- Federal Express
- Heartland Grain Elevator
- DSG Water Works
- Winnelson Plumbing Wholesale
- ND Surplus Property
- American Machine & Engineering
- All Seasons Roofing
- Benco Equipment
- Anderson Western
- Hubbard Feeds

Potential Uses

- Manufacturing Facility
- Wholesale
- Distribution
- Transportation Cross Docks
- Storage Units
- Agriculture & Energy Related Businesses
- Industrial & Commercial Uses

Price: \$263,973.60

- 1445 Cavalry Dr.
 - 2.02 Acres - \$3.00 psf
 - Lot 17 Block 3
 - ID: 38-138-80-11-03-170
 - Taxes: \$622.87 (2018)
- No Special Assessments (2018)
- Easy Access to I-94
- Zoned MA (Industrial)

Broker does not guarantee the information describing this property. Interested parties are advised to independently verify the information through personal inspectors or with appropriate professionals.



Kyle Holwagner, CCIM, SIOR
701.400.5373
Kyle@DanielCompanies.com

Kristyn Steckler, Senior Client Coordinator
701.527.0138
Kristyn@DanielCompanies.com

DanielCompanies.com

Topography Map



APPLE CREEK INDUSTRIAL PARK BISMARCK, NORTH DAKOTA



*Obtained from the Burleigh County GIS Flood Map—Property is located in flood plain



DANIEL COMPANIES

The Leader in Commercial Real Estate



Bill Daniel
CCIM, Broker

701.220.2455
Bill@DanielCompanies.com



Kyle Holwagner
CCIM, SIOR

701.400.5373
Kyle@DanielCompanies.com



Taylor Daniel
Commercial REALTOR®

701.391.4262
Taylor@DanielCompanies.com

Serving commercial real estate clients with unmatched market knowledge, experience and a well-deserved reputation for integrity. They know the Bismarck-Mandan commercial real estate market better than anyone.

Powerful Team. Powerful Process. Powerful Results.