

# City Center Plaza

418 E Broadway Ave Suite 70 - Bismarck, ND

728 sf - \$13.00 psf Full Service



**Taylor Daniel, Commercial REALTOR®**  
701.391.4262  
[Taylor@DanielCompanies.com](mailto:Taylor@DanielCompanies.com)

**Bill Daniel, CCIM, Broker**  
701.220.2455  
[Bill@DanielCompanies.com](mailto:Bill@DanielCompanies.com)

[DanielCompanies.com](http://DanielCompanies.com)

## Executive Summary for Lease

<b>Address:</b>	418 E Broadway Ave Suite 70 - Bismarck, ND
<b>Property Name:</b>	City Center Plaza
<b>Date Available:</b>	Now
<b>Lease Term:</b>	3 Year Minimum
<b>Lease Rate:</b>	\$13.00 psf / \$871 mo.
<b>Approximate SF:</b>	728 sf.
<b>Parking:</b>	None Provided. Ramp parking may be available
<b>Tenant Responsibilities:</b>	Janitorial
<b>Landlord Responsibilities:</b>	Building Maintenance and Common Area Maintenance.

Broker does not guarantee the information describing this property. Interested parties are advised to independently verify the information through personal inspectors or with appropriate professionals.

- In the heart of downtown Bismarck
- Across the street from City Parking Ramp
- Walking distance to many downtown restaurants / bars
- Easy Access to Bismarck Event Center and Kirkwood Mall
- Common conference room available on 2nd floor on Tenant use

**\$787 mo - 728 sf**

- 3 Private Offices
- Common Restroom
- Reception Area
- Storage Room
- Elevator
- Great Corner Location: Corner of N 5th St and E Broadway Ave.

### Potential Uses:

- Professional Services
- Medical Office
- Financial Office
- Legal Office
- Accounting Firm
- Government Offices



**Taylor Daniel, Commercial REALTOR®**  
701.391.4262  
[Taylor@DanielCompanies.com](mailto:Taylor@DanielCompanies.com)

**Bill Daniel, CCIM, Broker**  
701.220.2455  
[Bill@DanielCompanies.com](mailto:Bill@DanielCompanies.com)



**Taylor Daniel, Commercial REALTOR®**  
701.391.4262  
[Taylor@DanielCompanies.com](mailto:Taylor@DanielCompanies.com)

**Bill Daniel, CCIM, Broker**  
701.220.2455  
[Bill@DanielCompanies.com](mailto:Bill@DanielCompanies.com)

[DanielCompanies.com](http://DanielCompanies.com)



# City Center Plaza - 418 East Broadway Avenue - Bismarck, North Dakota



Drawn By: Inline Design, Inc (5/6/11)

## Lower Level Layout

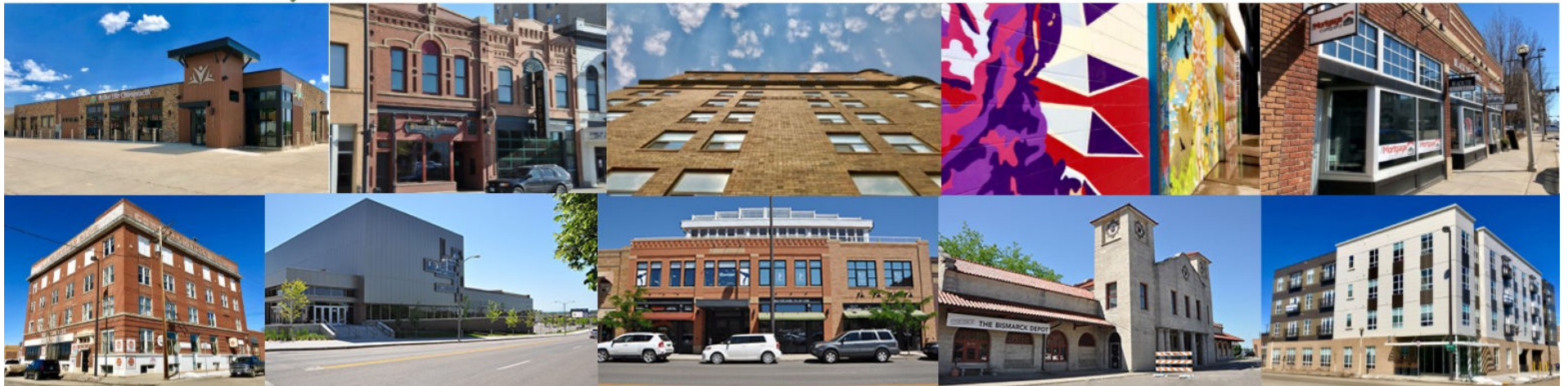


Taylor Daniel, Commercial REALTOR®  
701.391.4262  
[Taylor@DanielCompanies.com](mailto:Taylor@DanielCompanies.com)

Bill Daniel, CCIM, Broker  
701.220.2455  
[Bill@DanielCompanies.com](mailto:Bill@DanielCompanies.com)

[DanielCompanies.com](http://DanielCompanies.com)

# Join Exciting Downtown Bismarck!

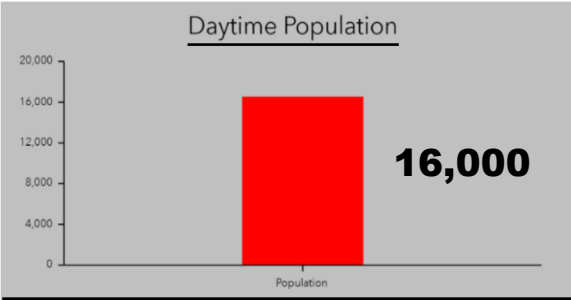


Taylor Daniel, Commercial REALTOR®  
 701.391.4262  
[Taylor@DanielCompanies.com](mailto:Taylor@DanielCompanies.com)

Bill Daniel, CCIM, Broker  
 701.220.2455  
[Bill@DanielCompanies.com](mailto:Bill@DanielCompanies.com)

[DanielCompanies.com](http://DanielCompanies.com)

# Downtown Bismarck



Walk Score

**86**

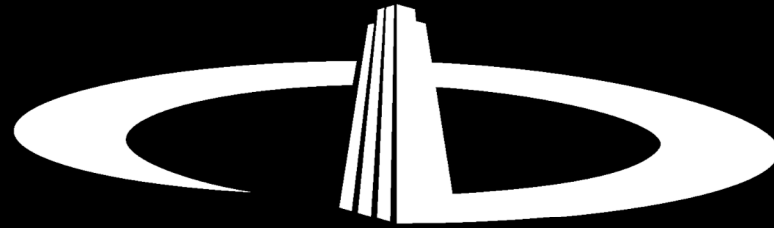


**DANIEL COMPANIES**  
The Leader in Commercial Real Estate

Taylor Daniel, Commercial REALTOR®  
701.391.4262  
Taylor@DanielCompanies.com

Bill Daniel, CCIM, Broker  
701.220.2455  
Bill@DanielCompanies.com

DanielCompanies.com



# DANIEL COMPANIES

The Leader in Commercial Real Estate

Serving commercial real estate clients with unmatched market knowledge, experience, and a well-deserved reputation for integrity. They know the Bismarck-Mandan commercial real estate market better than anyone. This powerful team delivers powerful results.



**Bill Daniel, CCIM, Broker**  
701.220.2455  
Bill@DanielCompanies.com



**Kyle Holwagner, CCIM, SIOR**  
701.400.5373  
Kyle@DanielCompanies.com



**Taylor Daniel, Commercial REALTOR®**  
701.391.4262  
Taylor@DanielCompanies.com

701.223.8488  
304 E ROSSER AVE #200  
BISMARCK, ND 58501



ICSC CCIM SIOR  
INDIVIDUAL MEMBERS