

Professional Downtown Office Space

400 E Broadway Ave - Ste. 305 - Bismarck, ND

2,881 sf - 3rd Floor - \$15.50 psf



Taylor Daniel | Vice President
Commercial Realtor®
Taylor@DanielCompanies.com

Bill Daniel | President
CCIM, Broker
Bill@DanielCompanies.com

DanielCompanies.com

Executive Summary for Lease

Address:	400 E Broadway Ave Ste. 305 - Bismarck, ND
Property Name:	Grand Pacific Center
Date Available:	Available Now
Lease Term:	3 Year Minimum
Lease Rate:	\$15.50 psf
Approximate SF:	2,881 sf
Tenant Responsibilities:	Parking, Internet, and Phone
Landlord Responsibilities:	Full Service

Broker does not guarantee the information describing this property. Interested parties are advised to independently verify the information through personal inspectors or with appropriate professionals.

\$15.50 psf—Full Service

- Full Service Lease
- Downtown Landmark Building
- Two Elevators
- Conference Room
- 10 Private Offices
- Break Area with Wet Bar
- Great Downtown Views
- Newly Renovated Exterior & Interior Lower Lobby
- Great Location and View of Downtown



Walk Score

89

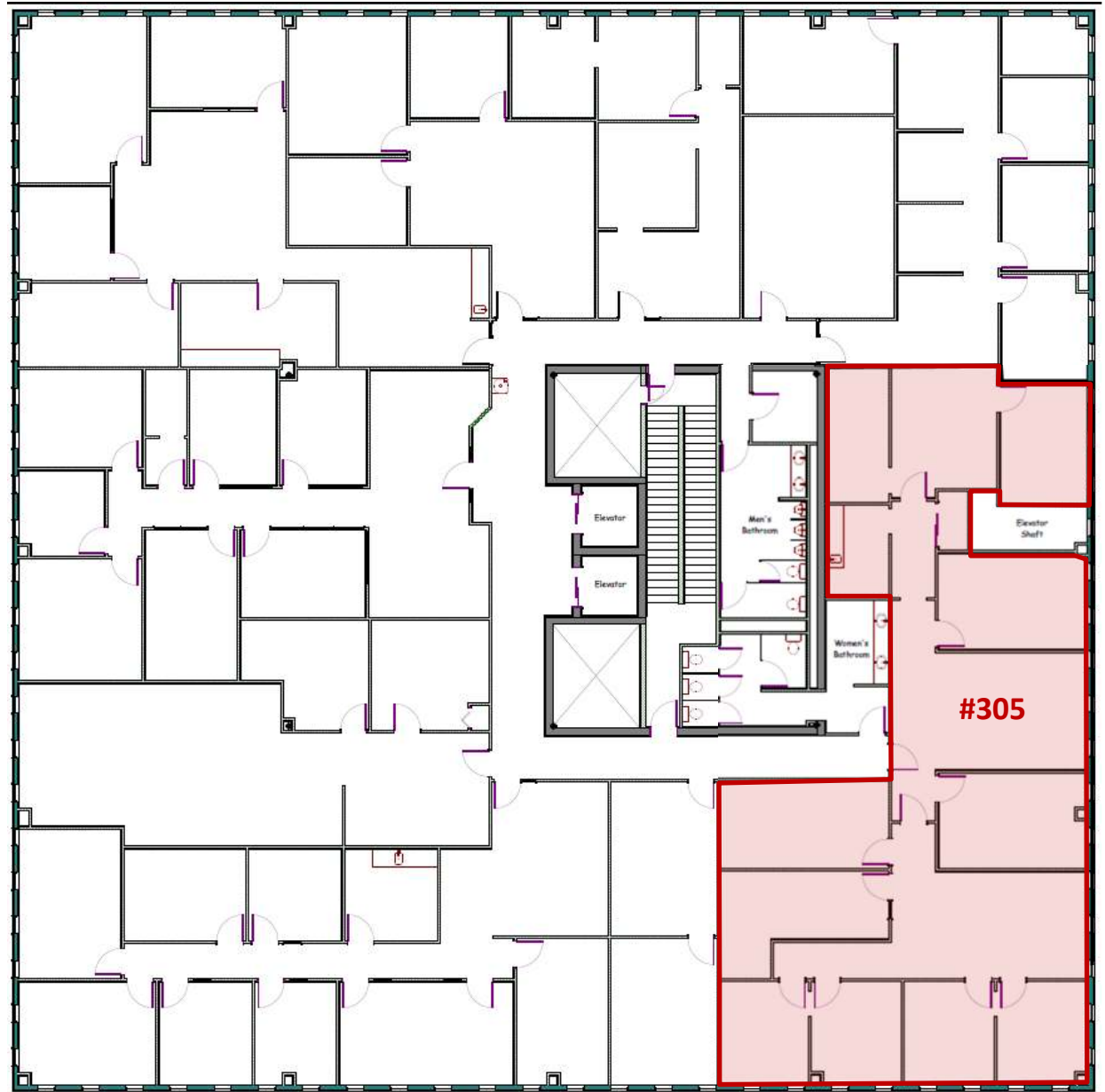
400 E. Broadway Ave has a Walk Score of 89 out of 100.
Very Walkable – Most errands can be accomplished on foot.



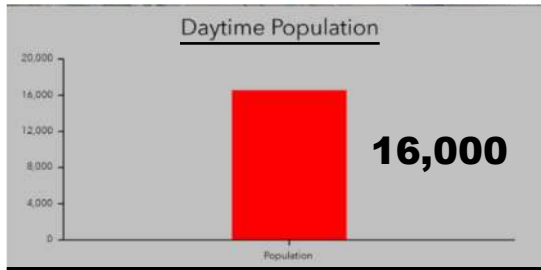
Taylor Daniel | Vice President
Commercial Realtor®
Taylor@DanielCompanies.com

Bill Daniel | President
CCIM, Broker
Bill@DanielCompanies.com

DanielCompanies.com







Join Exciting Downtown Bismarck!



DANIELCOMPANIES
The Leader in Commercial Real Estate

Taylor Daniel | Vice President
Commercial Realtor®
Taylor@DanielCompanies.com

Bill Daniel | President
CCIM, Broker
Bill@DanielCompanies.com

DanielCompanies.com



DANIEL COMPANIES

The Leader in Commercial Real Estate



**Bill Daniel, CCIM | President
Commercial Broker**

701.220.2455

Bill@DanielCompanies.com



**Taylor Daniel | Vice President
Commercial Realtor®**

701.391.4262

Taylor@DanielCompanies.com

Serving commercial real estate clients with unmatched market knowledge, experience and a well-deserved reputation for integrity.
They know the Bismarck-Mandan commercial real estate market better than anyone.

Powerful Team. Powerful Process. Powerful Results.