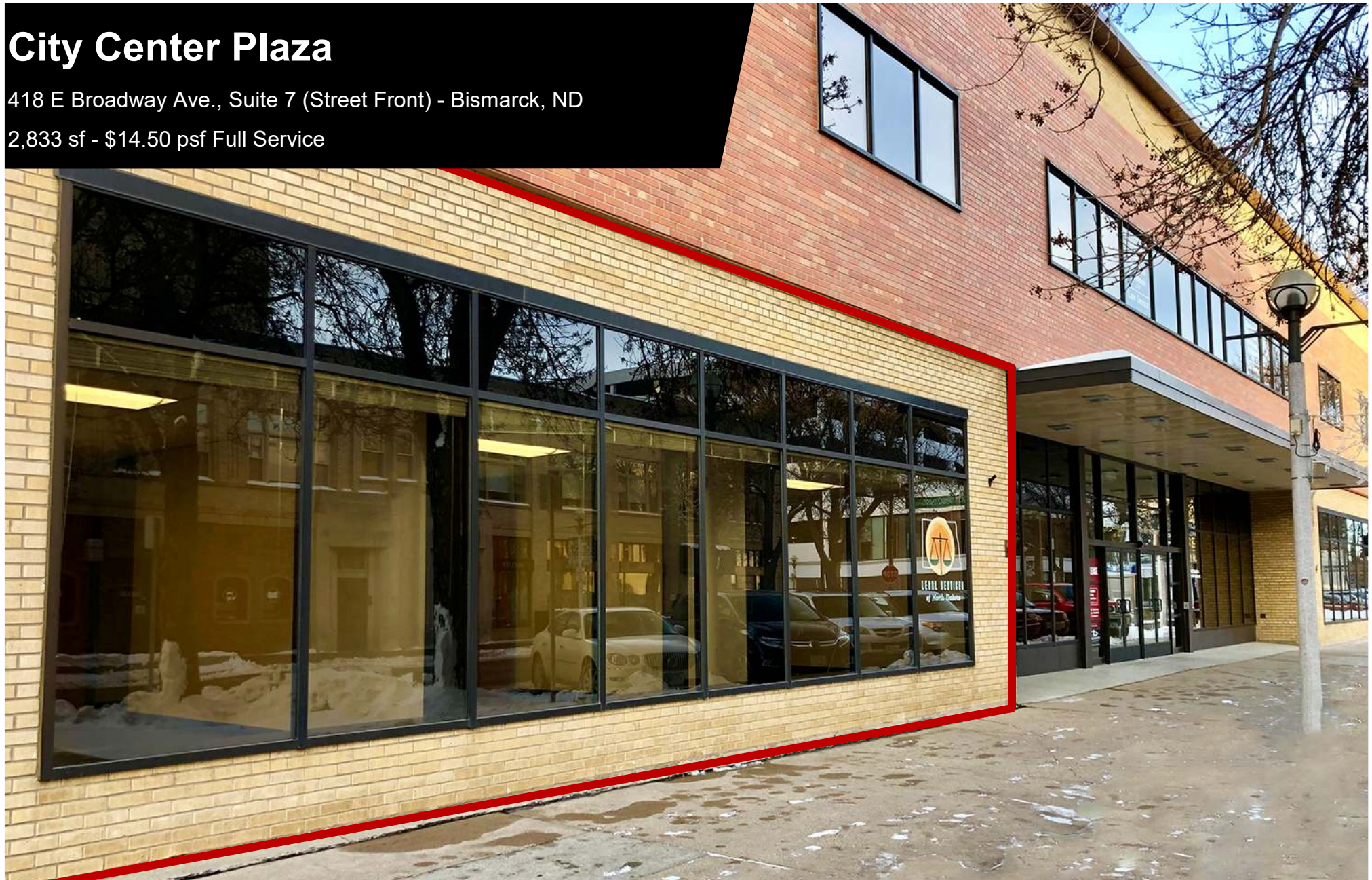


City Center Plaza

418 E Broadway Ave., Suite 7 (Street Front) - Bismarck, ND

2,833 sf - \$14.50 psf Full Service



Taylor Daniel | Vice President
Commercial Realtor®
Taylor@DanielCompanies.com

Bill Daniel | President
CCIM, Broker
Bill@DanielCompanies.com

DanielCompanies.com

Executive Summary for Lease

Address:	418 E Broadway Ave Suite 7 - Bismarck, ND
Property Name:	City Center Plaza
Date Available:	Now
Lease Term:	3 Year Minimum
Lease Rate:	\$14.50 psf / \$3,423 mo.
Approximate SF:	2,833 sf - can be subdivided
Parking:	None Provided. Ramp parking available
Tenant Responsibilities:	Internet and Phone
Landlord Responsibilities:	Building Maintenance and Common Area Maintenance.

Broker does not guarantee the information describing this property. Interested parties are advised to independently verify the information through personal inspectors or with appropriate professionals.

Potential Uses:

- Professional Services
- Medical Office
- Financial Office
- Legal Office
- Accounting Firm
- Government Offices



418 E Broadway Avenue has a walk score of 86 out of 100. This location is Very Walkable so most errands can be accomplished on foot.

This location is in the Downtown neighborhood in Bismarck. Nearby parks include Custer Park, Kiwanis Park and Riverside Park.

\$3,423 mo. - 2,833 sf

- Rare street front, Downtown Space
- 10 Private Offices
- Common Restroom
- Common Conference Room
- Reception Area
- Break room with wet bar
- Elevator
- Great Corner Location: Corner of N 5th St and E Broadway Ave.
- In the heart of Downtown Bismarck
- Across the street from City Parking Ramp
- Walking distance to many downtown restaurants / bars / boutiques
- Easy access to Bismarck Event Center, Kirkwood Mall, and City & County Offices
- Common conference room available on 2nd for tenant use

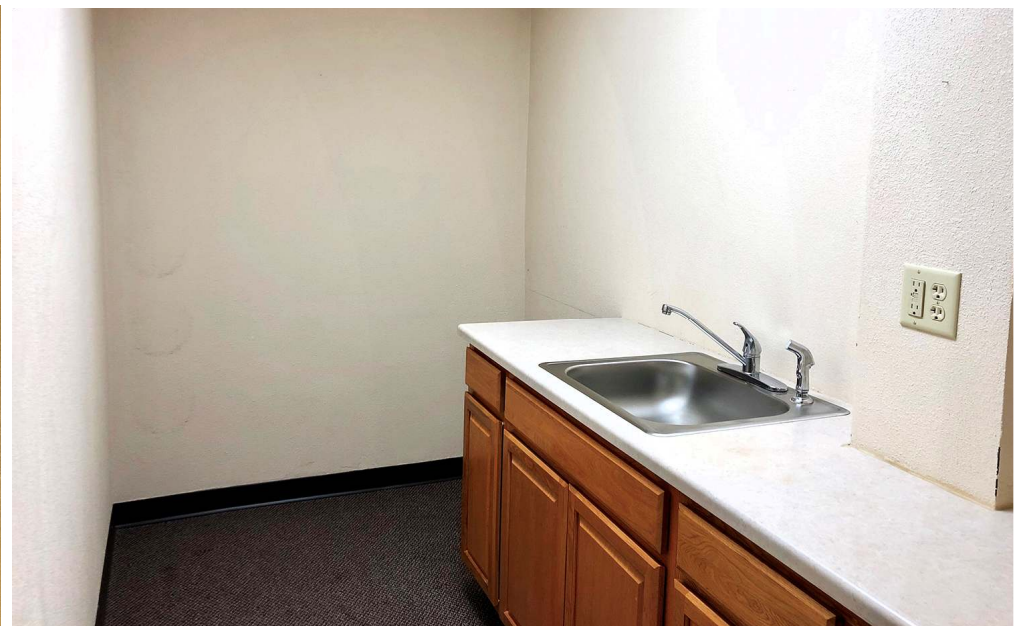


Taylor Daniel | Vice President
Commercial Realtor®
Taylor@DanielCompanies.com

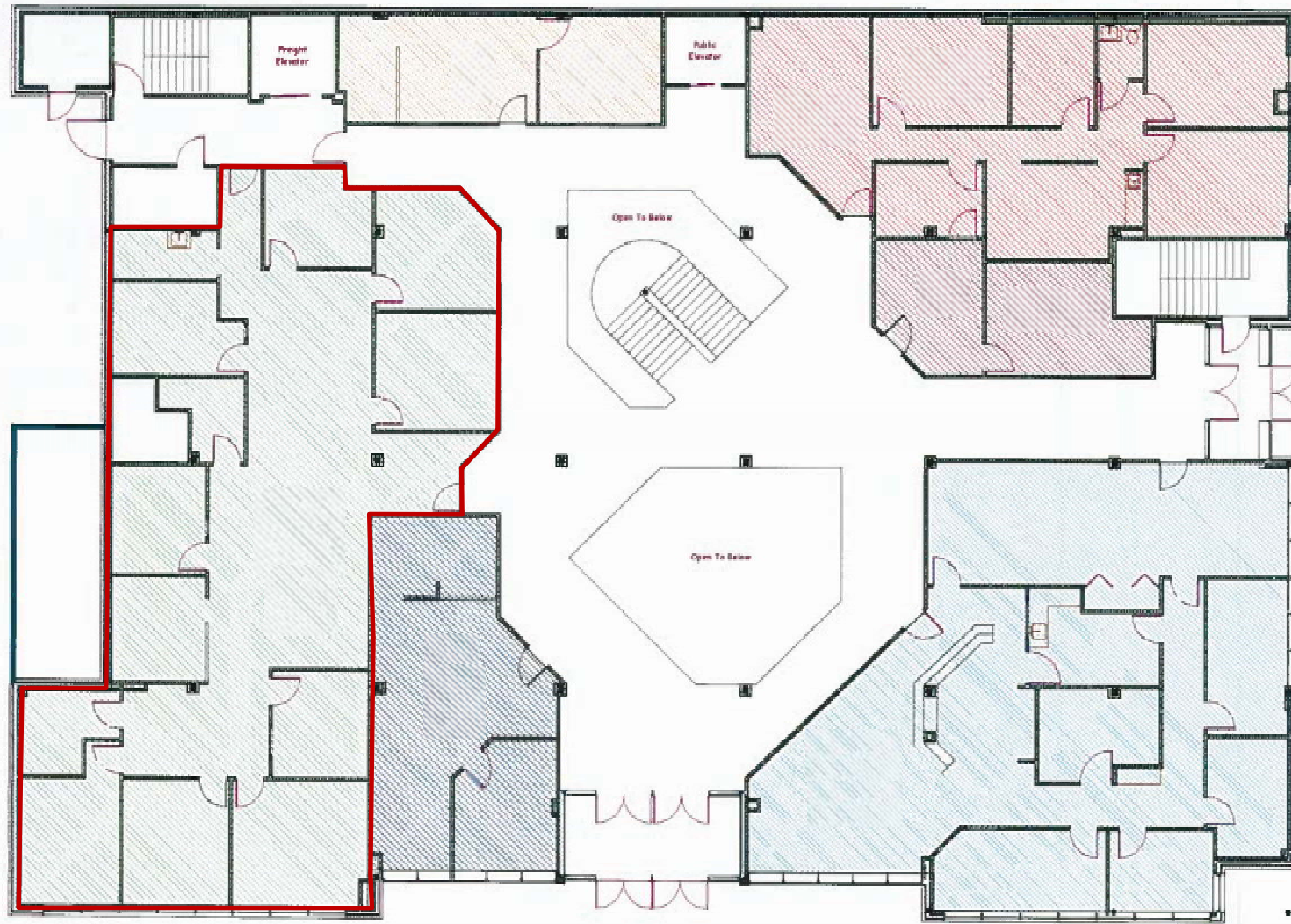
Bill Daniel | President
CCIM, Broker
Bill@DanielCompanies.com

DanielCompanies.com



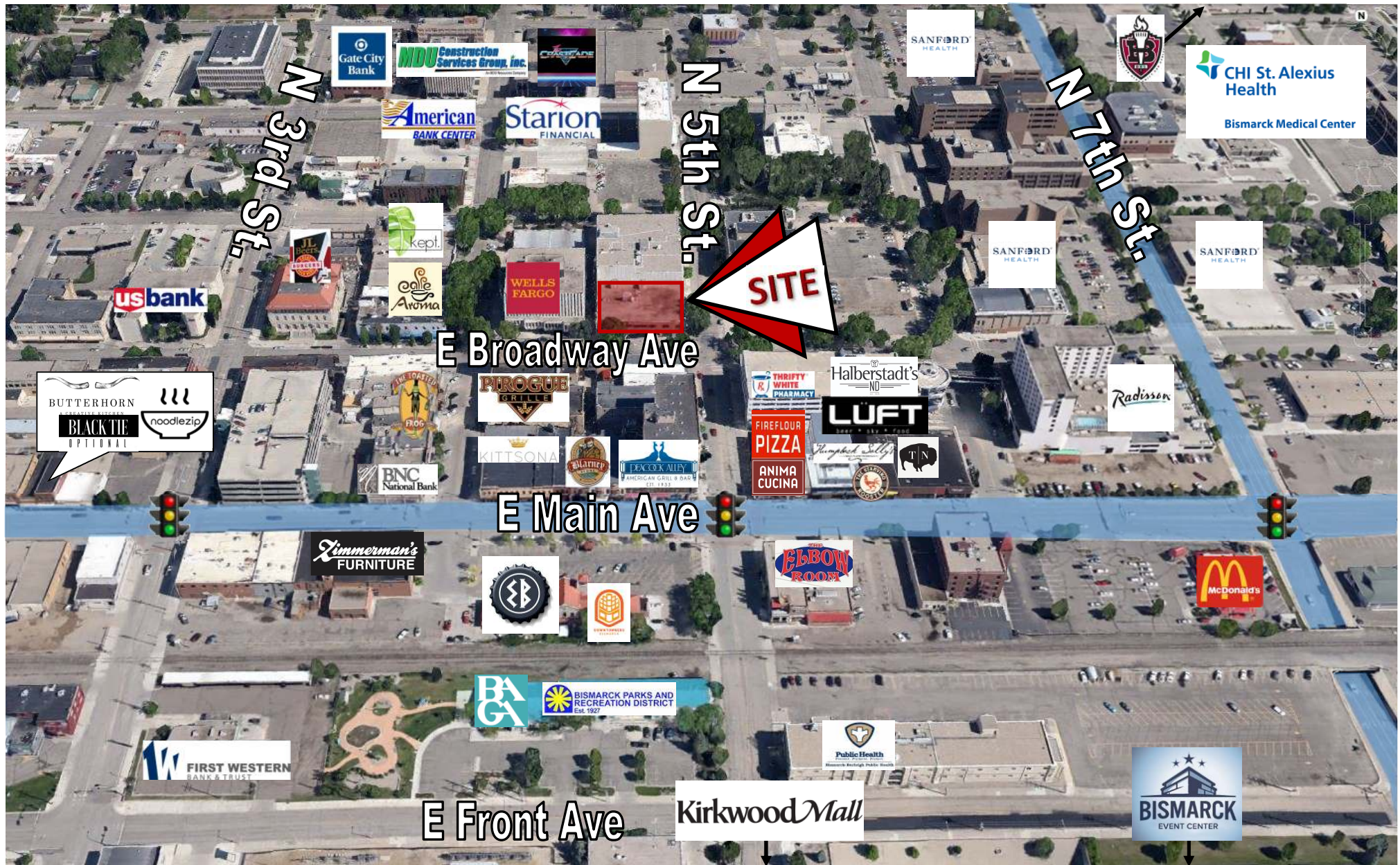


City Center Plaza - 418 East Broadway Avenue - Bismarck, North Dakota



Drawn By: Enline Design, Inc. (2/4/11)

Main Floor Layout



Join Exciting Downtown Bismarck!



DANIEL COMPANIES
The Leader in Commercial Real Estate

Taylor Daniel | Vice President
Commercial Realtor®
Taylor@DanielCompanies.com

Bill Daniel | President
CCIM, Broker
Bill@DanielCompanies.com

DanielCompanies.com



DANIEL COMPANIES

The Leader in Commercial Real Estate



**Bill Daniel, CCIM | President
Commercial Broker**

701.220.2455

Bill@DanielCompanies.com



**Taylor Daniel | Vice President
Commercial Realtor®**

701.391.4262

Taylor@DanielCompanies.com

Serving commercial real estate clients with unmatched market knowledge, experience and a well-deserved reputation for integrity.
They know the Bismarck-Mandan commercial real estate market better than anyone.

Powerful Team. Powerful Process. Powerful Results.