

# Capitol Way Center 2nd Floor

1615 Capitol Way - Bismarck, ND

6,248 sf @ \$12.00 psf - \$6,248 mo. + Utilities and Snow Removal



**Bill Daniel | President**  
CCIM, Broker  
[Bill@DanielCompanies.com](mailto:Bill@DanielCompanies.com)

**Taylor Daniel | Vice President**  
Commercial Realtor®  
[Taylor@DanielCompanies.com](mailto:Taylor@DanielCompanies.com)

[DanielCompanies.com](http://DanielCompanies.com)



**Second Floor: \$12 psf+Util. & Snow Removal  
\$6,248 per month**

**6,248 sf Second Floor  
Built in 1997**

- Free Standing Building
- Elevator Access to all 3 levels
- Common Restroom
- Great Signage Opportunity
- Large Surface Parking Lot
- Tenant Responsible for Snow Removal
- Easy Access to State St., Hwy 83 N, I-94, and ND State Capitol Complex

**Building Information:**

- The Dakota Carrier Network facility is connected via diverse fiber optic connections to DCN's network which will support 100 gigabit broadband speeds.
- North half of the main floor constructed with concrete hollow-core to support data center servers and oversized computer equipment

Broker does not guarantee the information describing this property. Interested parties are advised to independently verify the information through personal inspectors or with appropriate professionals.



**Bill Daniel | President**  
CCIM, Broker  
[Bill@DanielCompanies.com](mailto:Bill@DanielCompanies.com)

**Taylor Daniel | Vice President**  
Commercial Realtor®  
[Taylor@DanielCompanies.com](mailto:Taylor@DanielCompanies.com)

[DanielCompanies.com](http://DanielCompanies.com)



## Potential User Groups

- Association Headquarters
- Medical Clinic Uses
- Fitness Center & Spa
- Corporate Headquarters
- Legal & Accounting Firms
- Engineering Companies
- Government Offices
- Training Center / Education Uses
- Corporate Technology Hub

## Area Businesses

- Athena Square
- LaQuinta
- Ramada
- Days Inn
- O'Reilly Auto Parts
- 40 Steak & Seafood
- Hardee's
- Shell
- Exxon
- Pebble Creek Golf Course

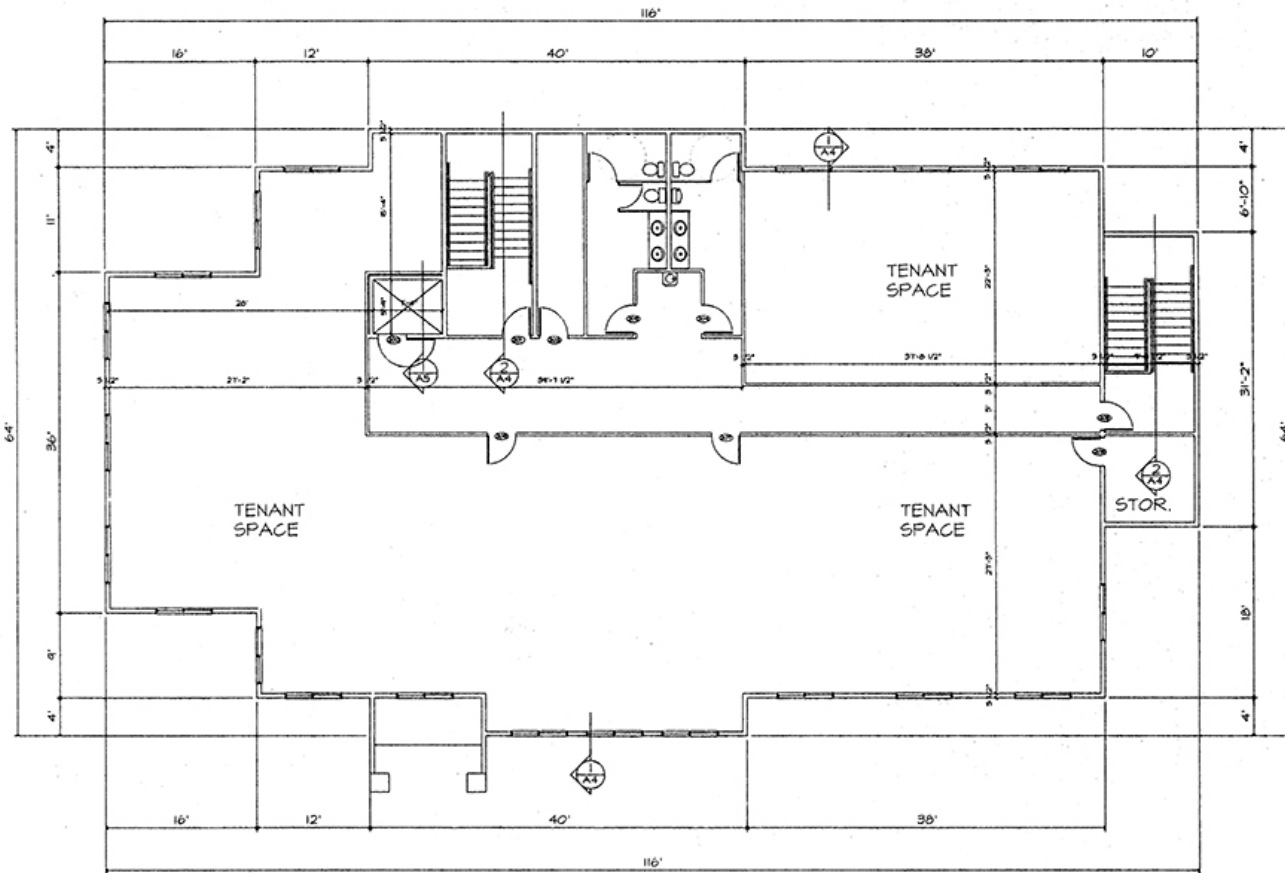


**Bill Daniel | President**  
CCIM, Broker  
[Bill@DanielCompanies.com](mailto:Bill@DanielCompanies.com)

**Taylor Daniel | Vice President**  
Commercial Realtor®  
[Taylor@DanielCompanies.com](mailto:Taylor@DanielCompanies.com)

[DanielCompanies.com](http://DanielCompanies.com)

# 1615 Capitol Way - Second Floor



## Second Floor - 6,248 sf

- Board room w/ sink & cabinetry
- 6 Private offices
- Workstation area
- Men's & Women's restroom

## SECOND FLOOR PLAN

1/8"=1'-0"

Floor plans may not reflect actual layout, some changes may have been made.



Bill Daniel | President  
CCIM, Broker  
[Bill@DanielCompanies.com](mailto:Bill@DanielCompanies.com)

Taylor Daniel | Vice President  
Commercial Realtor®  
[Taylor@DanielCompanies.com](mailto:Taylor@DanielCompanies.com)

[DanielCompanies.com](http://DanielCompanies.com)



Bill Daniel | President  
 CCIM, Broker  
[Bill@DanielCompanies.com](mailto:Bill@DanielCompanies.com)

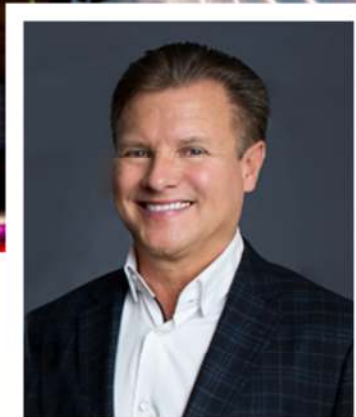
Taylor Daniel | Vice President  
 Commercial Realtor®  
[Taylor@DanielCompanies.com](mailto:Taylor@DanielCompanies.com)

[DanielCompanies.com](http://DanielCompanies.com)



# DANIEL COMPANIES

The Leader in Commercial Real Estate



**Bill Daniel, CCIM | President  
Commercial Broker**

701.220.2455  
Bill@DanielCompanies.com



**Taylor Daniel | Vice President  
Commercial Realtor®**

701.391.4262  
Taylor@DanielCompanies.com

Serving commercial real estate clients with unmatched market knowledge, experience and a well-deserved reputation for integrity. They know the Bismarck-Mandan commercial real estate market better than anyone.

**Powerful Team. Powerful Process. Powerful Results.**