

Capitol Way Center Main Floor

1615 Capitol Way - Bismarck, ND

6,248 sf @ \$14.00 psf - \$7,289 mo. + Utilities and Snow Removal



Bill Daniel | President
CCIM, Broker
Bill@DanielCompanies.com

Taylor Daniel | Vice President
Commercial Realtor®
Taylor@DanielCompanies.com

DanielCompanies.com



Easy Access to I-94 and State Street

- ◆ The former DCN facility is connected via diverse fiber optic connections to DCN's network which will support 100 gigabit broadband speeds.
- ◆ North half of the main floor constructed with concrete hollow-core to support data center servers and oversized computer equipment.
- ◆ Raised floor data center/server room in the lower level.

AREA EMPLOYERS

- ◆ ND State Capitol Complex
- ◆ Dakota Gasification
- ◆ Great River Energy
- ◆ ND Workforce Safety
- ◆ ND Department of Commerce
- ◆ Fore Seasons Center
- ◆ Shiloh Christian School
- ◆ Basin Electric Power Co-Op
- ◆ Century High School
- ◆ Legacy High School

AREA RESTAURANTS

- ◆ Red Lobster
- ◆ Olive Garden
- ◆ Long Horn Steakhouse
- ◆ Applebee's
- ◆ Paradiso Mexican Restaurant
- ◆ Sickies
- ◆ Perkins
- ◆ Buffalo Wild Wings
- ◆ Stone Home Brewing
- ◆ Starbucks
- ◆ Schlotzsky's
- ◆ Taco John's



Bill Daniel | President
CCIM, Broker
Bill@DanielCompanies.com

Taylor Daniel | Vice President
Commercial Realtor®
Taylor@DanielCompanies.com

DanielCompanies.com



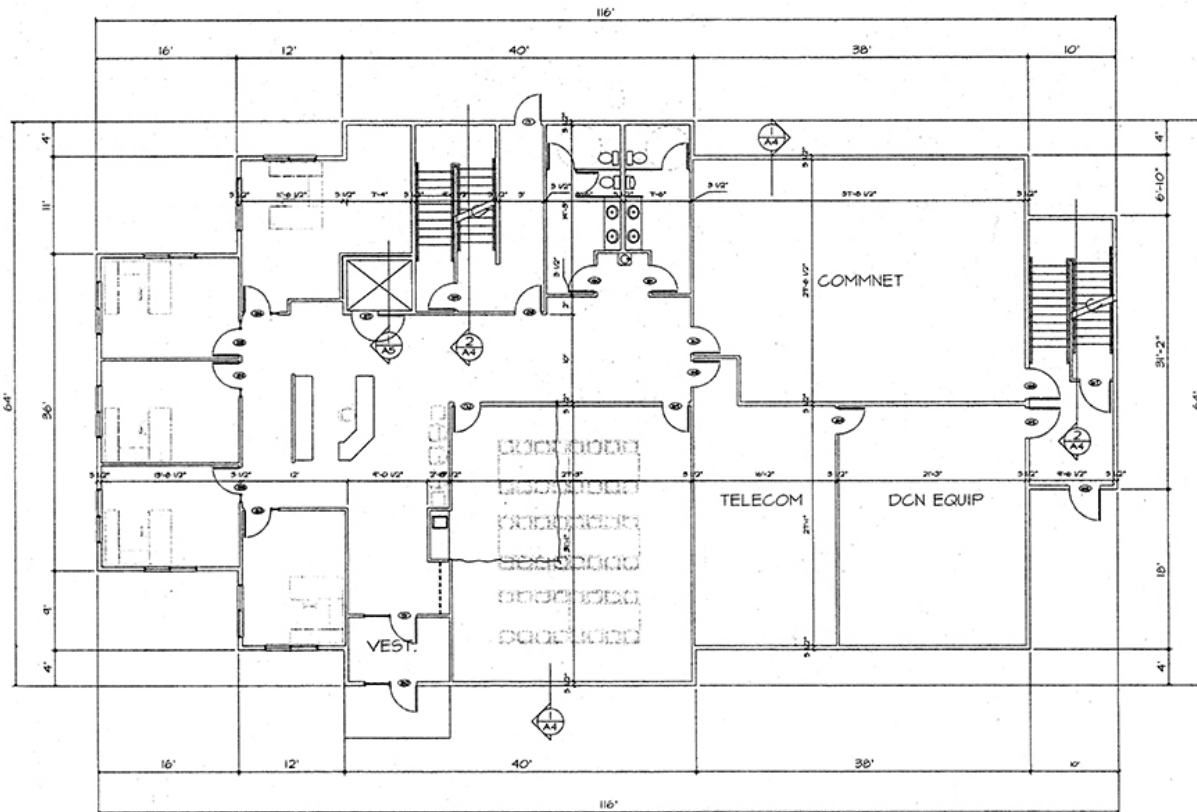
Potential User Groups

- ◆ Association Headquarters
- ◆ Medical Clinic Uses
- ◆ Fitness Center & Spa
- ◆ Corporate Headquarters
- ◆ Legal & Accounting Firms
- ◆ Engineering Companies
- ◆ Government Offices
- ◆ Training Center / Education Uses
- ◆ Corporate Technology Hub

Area Businesses

- ◆ Athena Square
- ◆ LaQuinta
- ◆ Ramada
- ◆ Days Inn
- ◆ O'Reilly Auto Parts
- ◆ 40 Steak & Seafood
- ◆ Hardee's
- ◆ Shell
- ◆ Exxon
- ◆ Pebble Creek Golf Course

1615 Capitol Way - First Floor



FIRST FLOOR PLAN

1/8"=1'-0"

Floor plans may not reflect actual layout, some changes may have been made.

First Floor - 6,248 sf

- ◆ Reception Area
- ◆ Conference room w/ sink & cabinetry
- ◆ 5 Windowed offices w/ skylight windows
- ◆ Men's & Women's restroom
- ◆ Large Open Area



83



INTERSTATE
94

INTERSTATE
94





DANIEL COMPANIES

The Leader in Commercial Real Estate



**Bill Daniel, CCIM | President
Commercial Broker**

701.220.2455

Bill@DanielCompanies.com



**Taylor Daniel | Vice President
Commercial Realtor®**

701.391.4262

Taylor@DanielCompanies.com

Serving commercial real estate clients with unmatched market knowledge, experience and a well-deserved reputation for integrity.
They know the Bismarck-Mandan commercial real estate market better than anyone.

Powerful Team. Powerful Process. Powerful Results.