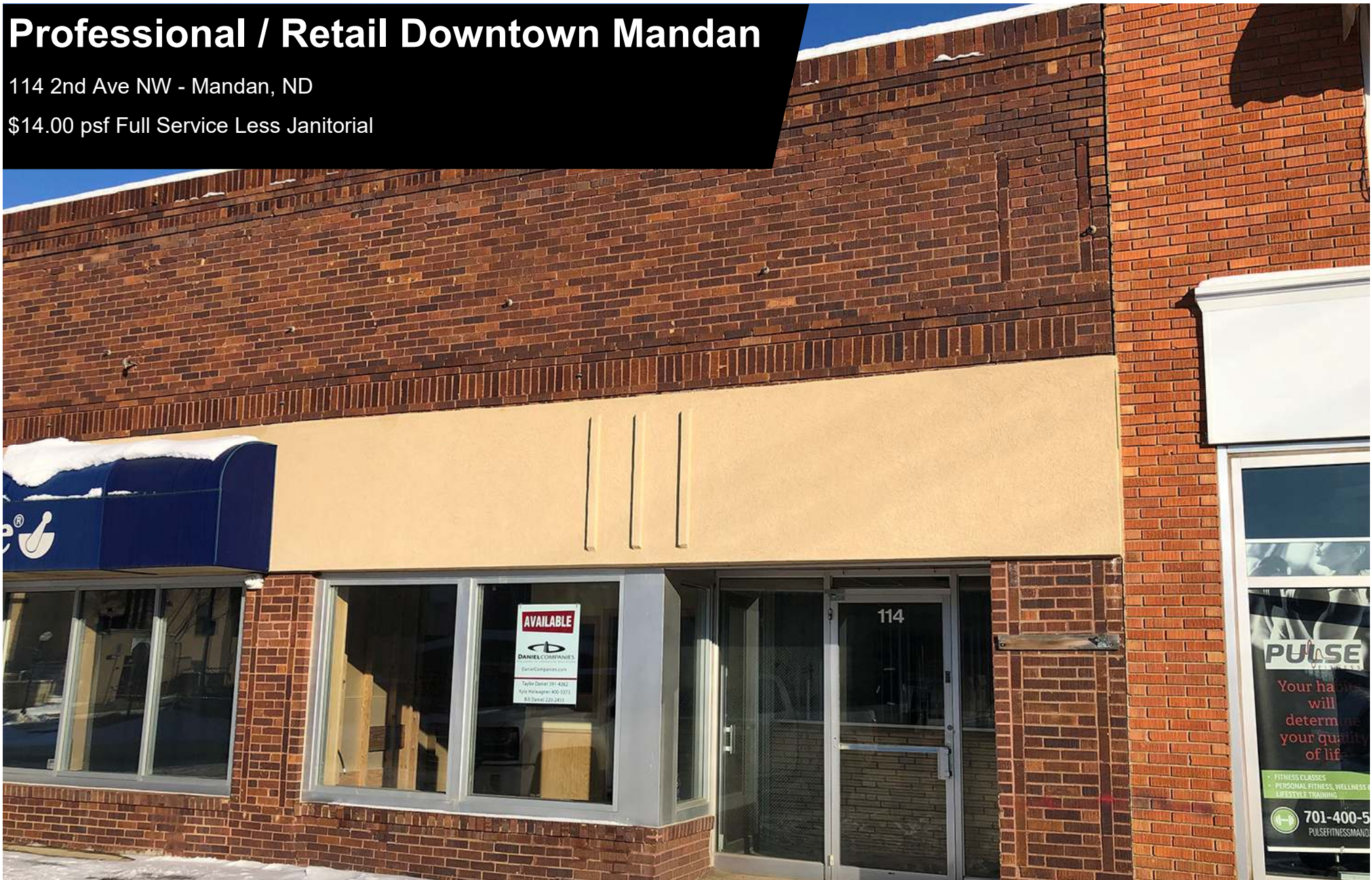


Professional / Retail Downtown Mandan

114 2nd Ave NW - Mandan, ND

\$14.00 psf Full Service Less Janitorial



Kyle Holwagner, CCIM, SIOR
701.400.5373
Kyle@DanielCompanies.com

Kristyn Steckler, Senior Client Coordinator
701.527.0138
Kristyn@DanielCompanies.com

DanielCompanies.com

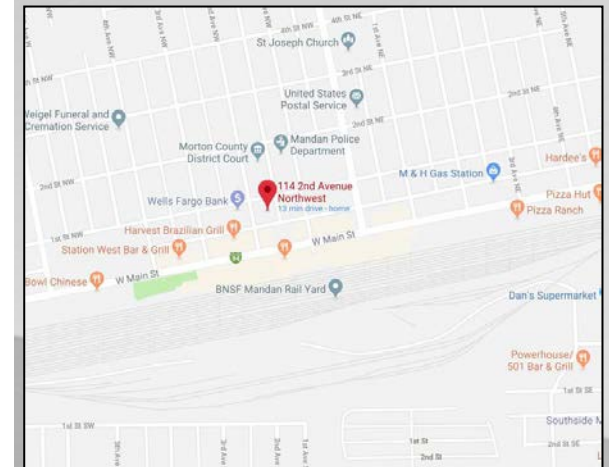
Executive Summary for Lease

Address:	114 2nd Ave NW - Mandan, ND 58554
Lease Term:	3 Year Minimum
Lease Rate:	\$14.00 psf Full Service
Approximate SF:	1,750 sf
Parking:	Off Street
Tenant Responsibilities:	Janitorial
Landlord Responsibilities:	Utilities, Interior Maintenance, Snow Removal, Parking Lot, Exterior Maintenance

Broker does not guarantee the information describing this property. Interested parties are advised to independently verify the information through personal inspectors or with appropriate professionals.

\$14.00 psf / \$2,041.67 mo.

- Just off Main Street
- Ample Parking
- Shared Restrooms
- Renaissance Zone income tax exemption may be applicable.



2018 POPULATION



1 MILE	3 MILE	5 MILE
11,292	19,012	48,287

AVERAGE HH INCOME



1 MILE	3 MILE	5 MILE
\$64,242	\$74,247	\$86,113

MEDIAN AGE



1 MILE	3 MILE	5 MILE
39.5	38.8	39.6



Kyle Holwagner, CCIM, SIOR
701.400.5373
Kyle@DanielCompanies.com

Kristyn Steckler, Senior Client Coordinator
701.527.0138
Kristyn@DanielCompanies.com

DanielCompanies.com





DANIEL COMPANIES

The Leader in Commercial Real Estate



Bill Daniel
CCIM, Broker

701.220.2455
Bill@DanielCompanies.com



Kyle Holwagner
CCIM, SIOR

701.400.5373
Kyle@DanielCompanies.com



Taylor Daniel
Commercial REALTOR®

701.391.4262
Taylor@DanielCompanies.com

Serving commercial real estate clients with unmatched market knowledge, experience and a well-deserved reputation for integrity. They know the Bismarck-Mandan commercial real estate market better than anyone.

Powerful Team. Powerful Process. Powerful Results.