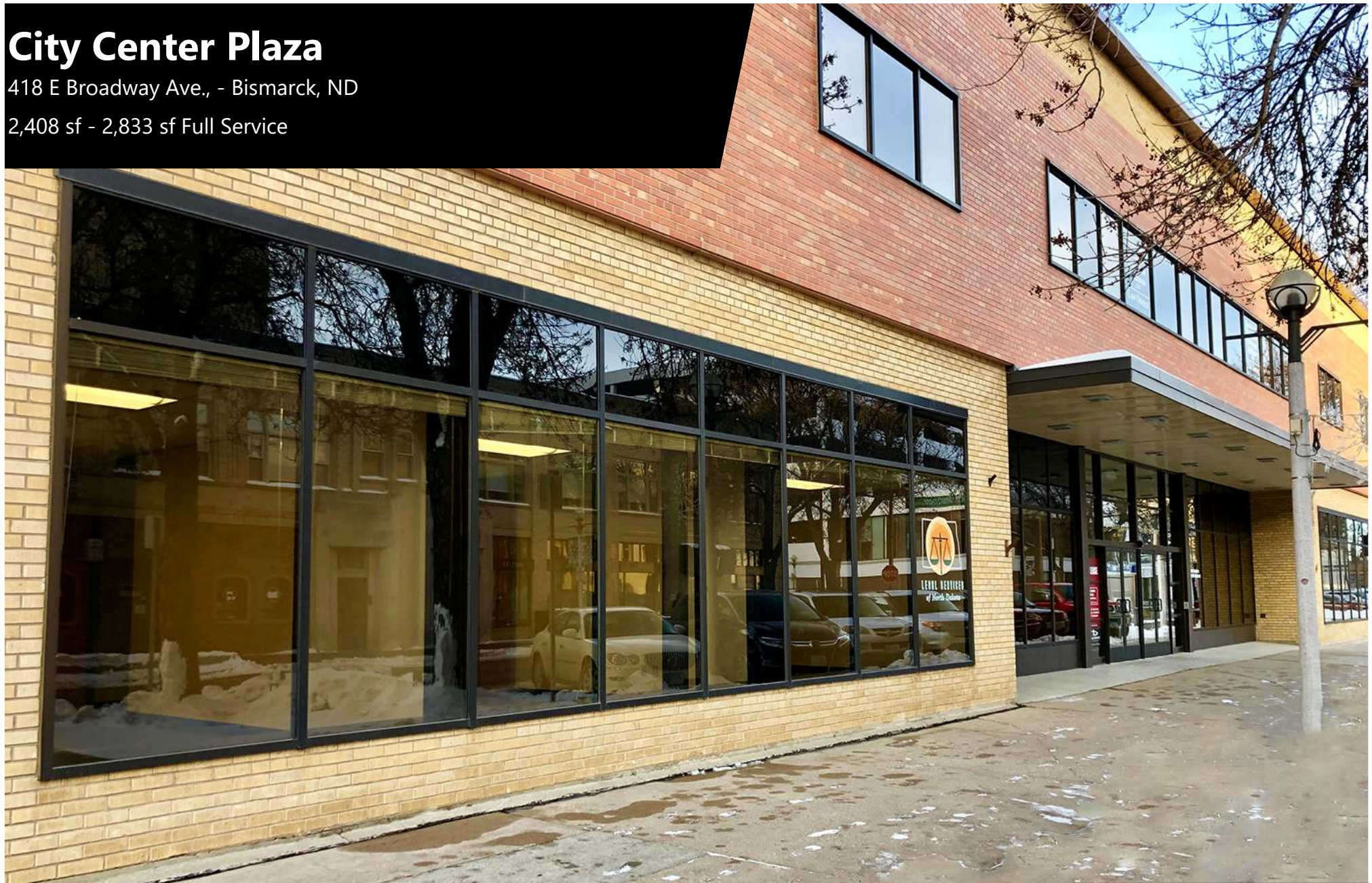


City Center Plaza

418 E Broadway Ave., - Bismarck, ND

2,408 sf - 2,833 sf Full Service



Taylor Daniel | Vice President
Commercial Realtor®
Taylor@DanielCompanies.com

Bill Daniel | President
CCIM, Broker
Bill@DanielCompanies.com

DanielCompanies.com

Executive Summary for Lease

Address:	418 E Broadway Ave Suite 7 - Bismarck, ND
Property Name:	City Center Plaza
Date Available:	Now
Lease Term:	3 Year Minimum
Lease Rate:	\$14.50 psf / \$3,423 mo.
Approximate SF:	2,833 sf - can be subdivided
Parking:	None Provided. Ramp parking available
Tenant Responsibilities:	Internet and Phone
Landlord Responsibilities:	Building Maintenance and Common Area Maintenance.

Broker does not guarantee the information describing this property. Interested parties are advised to independently verify the information through personal inspectors or with appropriate professionals.



\$3,423 mo. - 2,833 sf

- Rare street front, Downtown Space
- 10 Private Offices
- Common Restroom
- Common Conference Room
- Reception Area
- Break room with wet bar
- Elevator
- Great Corner Location: Corner of N 5th St and E Broadway Ave.
- In the heart of Downtown Bismarck
- Across the street from City Parking Ramp
- Walking distance to many downtown restaurants / bars / boutiques
- Easy access to Bismarck Event Center, Kirkwood Mall, and City & County Offices
- Common conference room available on 2nd for tenant use

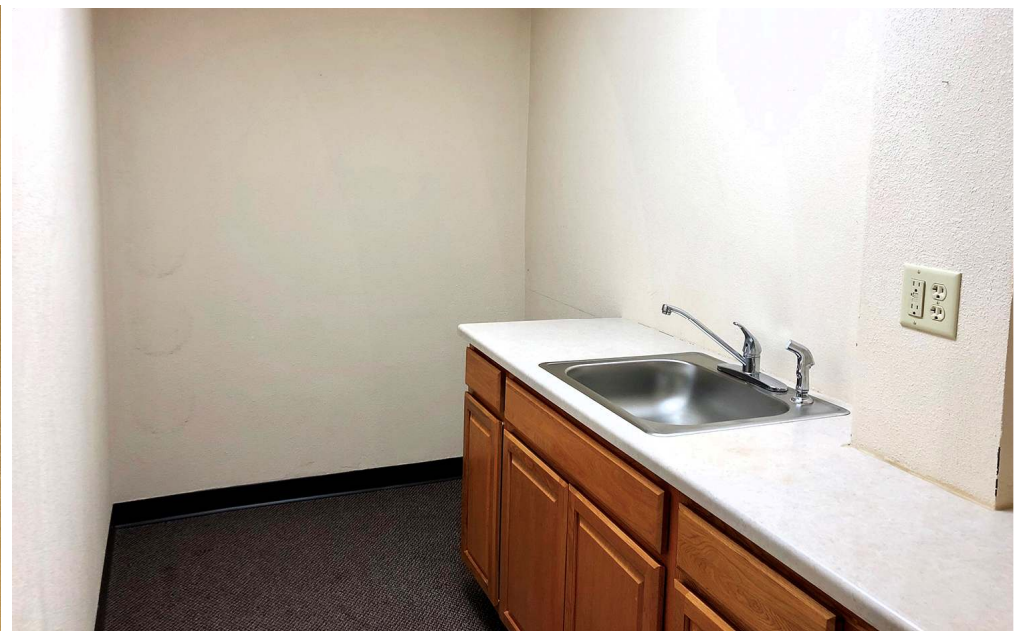


Taylor Daniel | Vice President
Commercial Realtor®
Taylor@DanielCompanies.com

Bill Daniel | President
CCIM, Broker
Bill@DanielCompanies.com

DanielCompanies.com





Executive Summary for Lease

Address:	418 E Broadway Ave #12 - Bismarck, ND
Property Name:	City Center Plaza
Date Available:	Now
Lease Term:	3 or 5 Year
Lease Rate:	\$16.00 psf / \$3,211 mo.
Approximate SF:	2,408 sf
Parking:	Street and Ramp parking maybe available
Tenant Responsibilities:	Base Rent, Internet, and Phone

Broker does not guarantee the information describing this property. Interested parties are advised to independently verify the information through personal inspectors or with appropriate professionals.



\$3,211 mo. - 2,408 sf

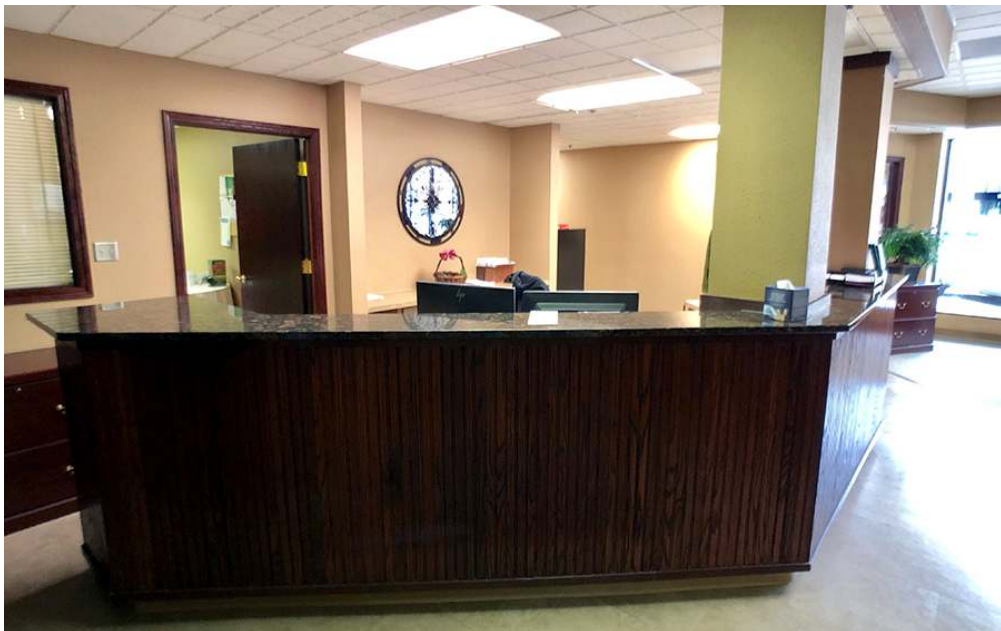
- Rare street front, Downtown Space
- Private Offices
- Common Restroom
- Common Conference Room
- Reception Area
- Break room with wet bar
- Elevator
- Great Corner Location: Corner of N 5th St and E Broadway Ave.
- In the heart of Downtown Bismarck
- Across the street from City Parking Ramp
- Walking distance to many downtown restaurants / bars / boutiques
- Easy access to Bismarck Event Center, Kirkwood Mall, and City & County Offices
- Common conference room available on 2nd for tenant use



Taylor Daniel | Vice President
Commercial Realtor®
Taylor@DanielCompanies.com

Bill Daniel | President
CCIM, Broker
Bill@DanielCompanies.com

DanielCompanies.com



Taylor Daniel | Vice President
Commercial Realtor®
Taylor@DanielCompanies.com

Bill Daniel | President
CCIM, Broker
Bill@DanielCompanies.com

DanielCompanies.com



Taylor Daniel | Vice President
 Commercial Realtor®
Taylor@DanielCompanies.com

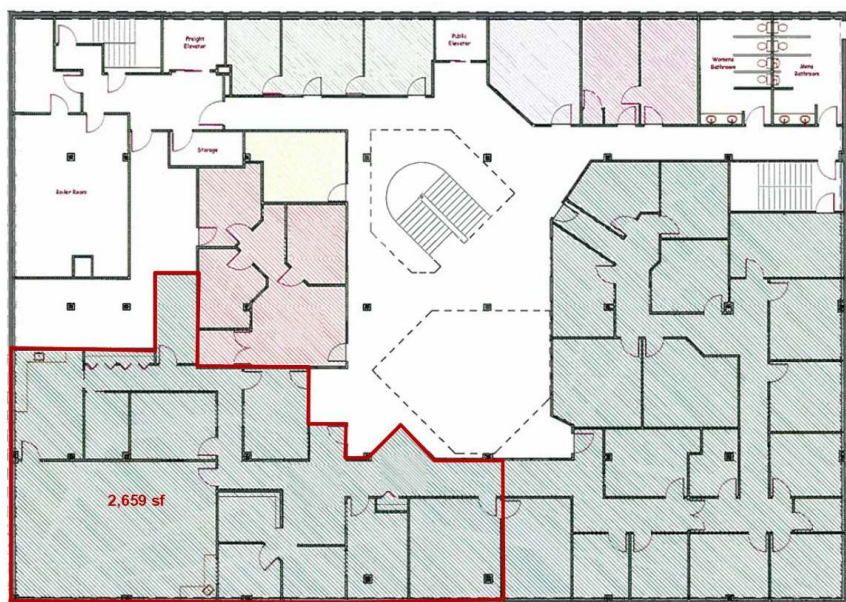
Bill Daniel | President
 CCIM, Broker
Bill@DanielCompanies.com

DanielCompanies.com

Executive Summary for Lease

Address:	418 E Broadway Ave Ste. 40 - Bismarck, ND
Property Name:	City Center Plaza
Date Available:	Now
Lease Term:	3 or 5 Year
Lease Rate:	\$9.95 psf / \$2,204.75 mo.
Approximate SF:	2,659 sf
Parking:	Street and Ramp parking maybe available
Tenant Responsibilities:	Base Rent, Internet, and Phone

Broker does not guarantee the information describing this property. Interested parties are advised to independently verify the information through personal inspectors or with appropriate professionals.



\$2,204.75 mo. - 2,659 sf

- Private Offices
- Common Restroom
- Common Conference Room
- Reception Area
- Break room with wet bar
- Elevator
- Great Corner Location: Corner of N 5th St and E Broadway Ave.
- In the heart of Downtown Bismarck
- Across the street from City Parking Ramp
- Walking distance to many downtown restaurants / bars / boutiques
- Easy access to Bismarck Event Center, Kirkwood Mall, and City & County Offices
- Common conference room available on 2nd for tenant use



Taylor Daniel | Vice President
Commercial Realtor®
Taylor@DanielCompanies.com

Bill Daniel | President
CCIM, Broker
Bill@DanielCompanies.com

DanielCompanies.com



Join Exciting Downtown Bismarck!



THREEFOLD



hiccup's
KIDS + BABY



Bismarck Veterans Memorial
Public Library



BOUTIQUE
Trendy Threads

BISMARCK



WHITE LACE

Bridal

Small town. Growing city.







DANIEL COMPANIES

The Leader in Commercial Real Estate



**Bill Daniel, CCIM | President
Commercial Broker**

701.220.2455

Bill@DanielCompanies.com



**Taylor Daniel | Vice President
Commercial Realtor®**

701.391.4262

Taylor@DanielCompanies.com

Serving commercial real estate clients with unmatched market knowledge, experience and a well-deserved reputation for integrity.
They know the Bismarck-Mandan commercial real estate market better than anyone.

Powerful Team. Powerful Process. Powerful Results.