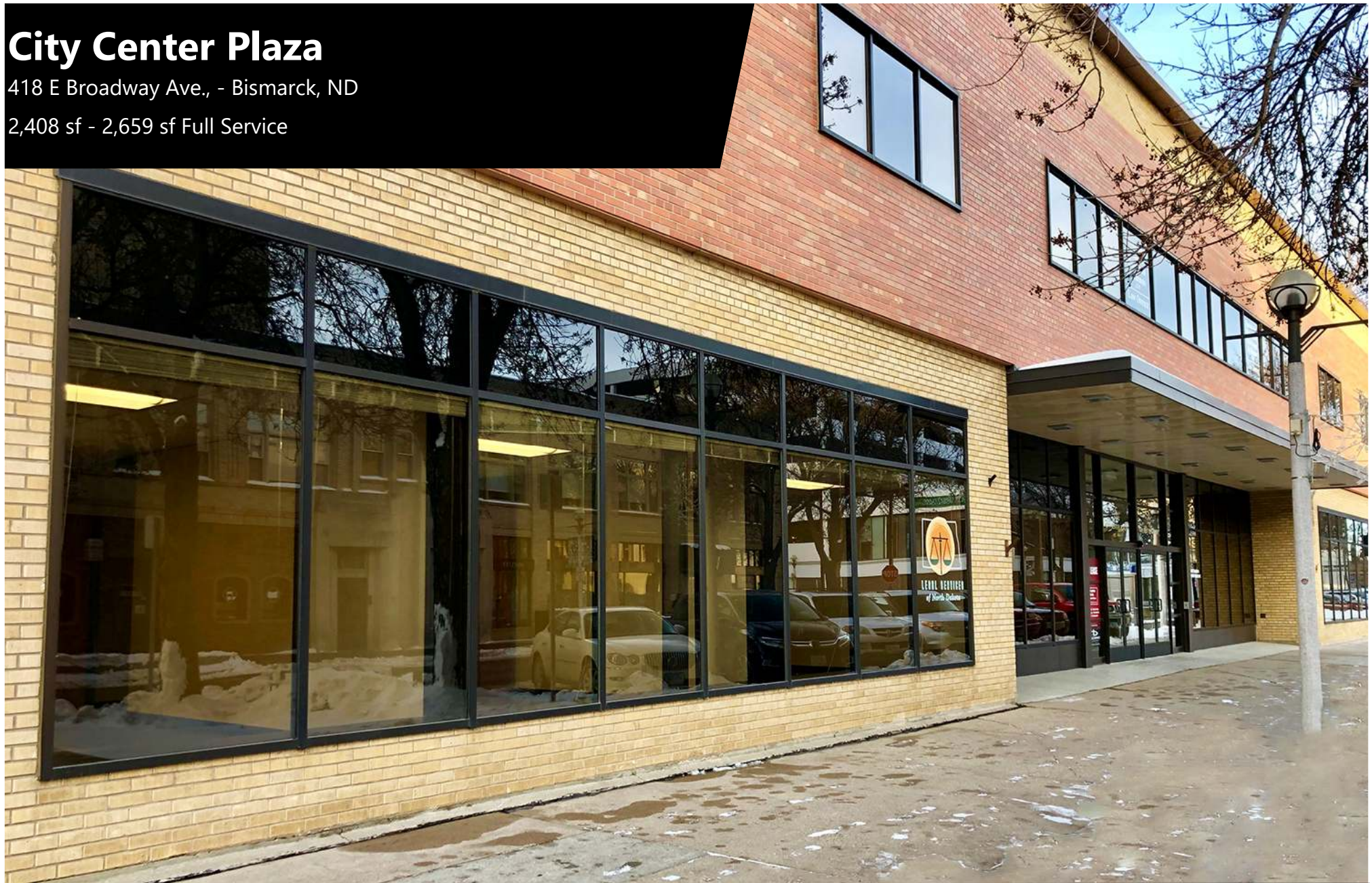


# City Center Plaza

418 E Broadway Ave., - Bismarck, ND

2,408 sf - 2,659 sf Full Service



**Taylor Daniel | Vice President**  
Commercial Realtor®  
[Taylor@DanielCompanies.com](mailto:Taylor@DanielCompanies.com)

**Bill Daniel | President**  
CCIM, Broker  
[Bill@DanielCompanies.com](mailto:Bill@DanielCompanies.com)

**[DanielCompanies.com](http://DanielCompanies.com)**



## Executive Summary for Lease

<b>Address:</b>	418 E Broadway Ave #12 - Bismarck, ND
<b>Property Name:</b>	City Center Plaza
<b>Date Available:</b>	Now
<b>Lease Term:</b>	3 or 5 Year
<b>Lease Rate:</b>	\$16.00 psf / \$3,211 mo.
<b>Approximate SF:</b>	2,408 sf
<b>Parking:</b>	Street and Ramp parking maybe available
<b>Tenant Responsibilities:</b>	Base Rent, Internet, and Phone

Broker does not guarantee the information describing this property. Interested parties are advised to independently verify the information through personal inspectors or with appropriate professionals.



**\$3,211 mo. - 2,408 sf**

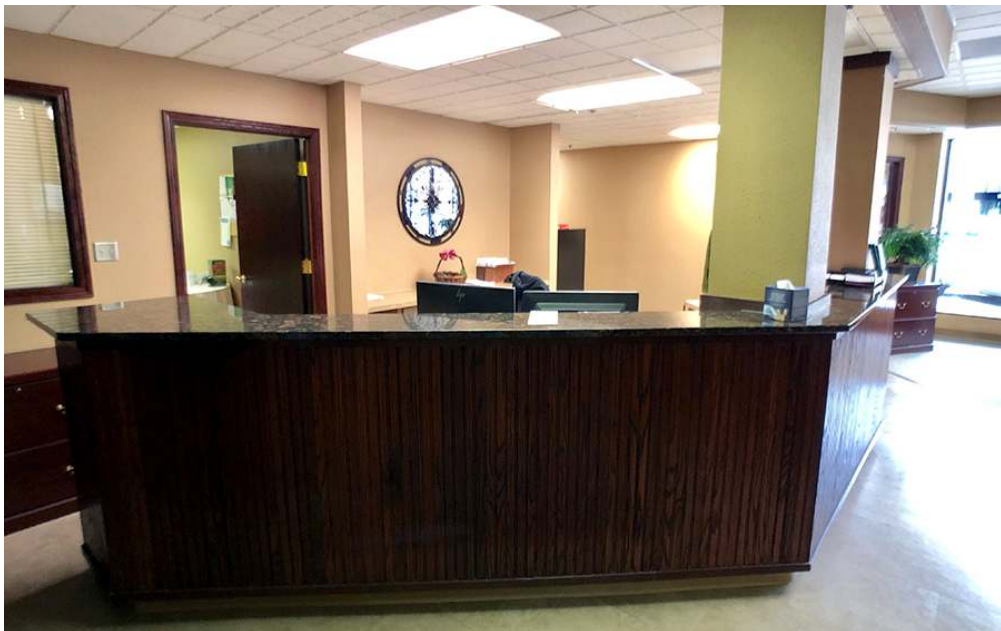
- Rare street front, Downtown Space
- Private Offices
- Common Restroom
- Common Conference Room
- Reception Area
- Break room with wet bar
- Elevator
- Great Corner Location: Corner of N 5th St and E Broadway Ave.
- In the heart of Downtown Bismarck
- Across the street from City Parking Ramp
- Walking distance to many downtown restaurants / bars / boutiques
- Easy access to Bismarck Event Center, Kirkwood Mall, and City & County Offices
- Common conference room available on 2nd for tenant use



**Taylor Daniel | Vice President**  
Commercial Realtor®  
[Taylor@DanielCompanies.com](mailto:Taylor@DanielCompanies.com)

**Bill Daniel | President**  
CCIM, Broker  
[Bill@DanielCompanies.com](mailto:Bill@DanielCompanies.com)

**DanielCompanies.com**



**Taylor Daniel | Vice President**  
Commercial Realtor®  
[Taylor@DanielCompanies.com](mailto:Taylor@DanielCompanies.com)

**Bill Daniel | President**  
CCIM, Broker  
[Bill@DanielCompanies.com](mailto:Bill@DanielCompanies.com)

**DanielCompanies.com**



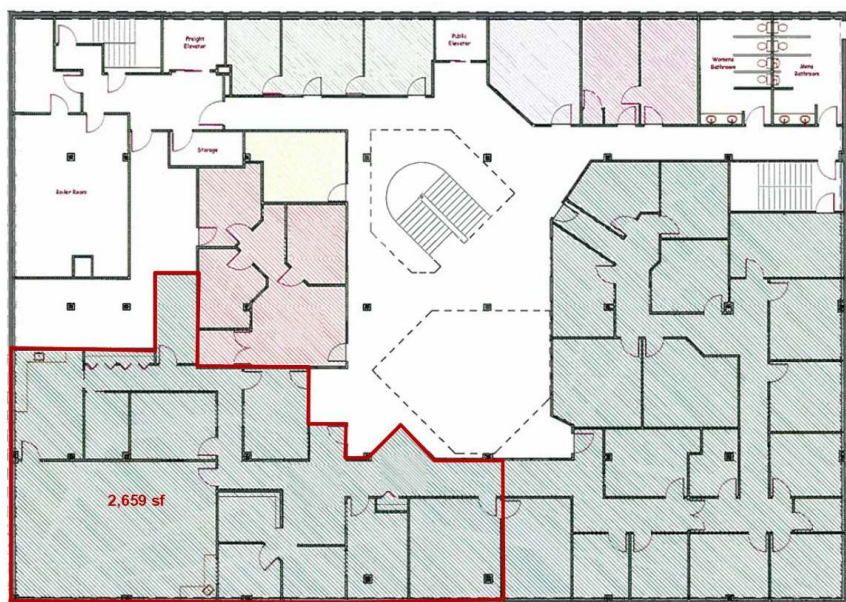




## Executive Summary for Lease

<b>Address:</b>	418 E Broadway Ave Ste. 40 - Bismarck, ND
<b>Property Name:</b>	City Center Plaza - Lower Level
<b>Date Available:</b>	Now
<b>Lease Term:</b>	3 or 5 Year
<b>Lease Rate:</b>	\$9.95 psf / \$2,204.75 mo.
<b>Approximate SF:</b>	2,659 sf
<b>Parking:</b>	Street and Ramp parking maybe available
<b>Tenant Responsibilities:</b>	Base Rent, Internet, and Phone

Broker does not guarantee the information describing this property. Interested parties are advised to independently verify the information through personal inspectors or with appropriate professionals.



**\$2,204.75 mo. - 2,659 sf**

- Private Offices
- Common Restroom
- Common Conference Room
- Reception Area
- Break room with wet bar
- Elevator
- Great Corner Location: Corner of N 5th St and E Broadway Ave.
- In the heart of Downtown Bismarck
- Across the street from City Parking Ramp
- Walking distance to many downtown restaurants / bars / boutiques
- Easy access to Bismarck Event Center, Kirkwood Mall, and City & County Offices
- Common conference room available on 2nd for tenant use



**Taylor Daniel | Vice President**  
Commercial Realtor®  
[Taylor@DanielCompanies.com](mailto:Taylor@DanielCompanies.com)

**Bill Daniel | President**  
CCIM, Broker  
[Bill@DanielCompanies.com](mailto:Bill@DanielCompanies.com)

**DanielCompanies.com**







# Join Exciting Downtown Bismarck!



THREEFOLD



hiccup's  
KIDS + BABY



Bismarck Veterans Memorial  
Public Library



Nutrition  
AMBITION

THE CAPITAL  
GALLERY



BOUTIQUE  
Trendy Threads

BISMARCK



WHITE LACE

Bridal

Small town. Growing city.











# DANIEL COMPANIES

The Leader in Commercial Real Estate



**Bill Daniel, CCIM | President  
Commercial Broker**

701.220.2455

Bill@DanielCompanies.com



**Taylor Daniel | Vice President  
Commercial Realtor®**

701.391.4262

Taylor@DanielCompanies.com

Serving commercial real estate clients with unmatched market knowledge, experience and a well-deserved reputation for integrity.  
They know the Bismarck-Mandan commercial real estate market better than anyone.

**Powerful Team. Powerful Process. Powerful Results.**