

# Commercial - Industrial - Office Facility

1025 Airport Rd - Bismarck, ND

8,072 sf building / 42,000 sf Lot - \$1,049,000



**Taylor Daniel | Vice President**  
Commercial Realtor®  
[Taylor@DanielCompanies.com](mailto:Taylor@DanielCompanies.com)

**Bill Daniel | President**  
CCIM, Broker  
[Bill@DanielCompanies.com](mailto:Bill@DanielCompanies.com)

[DanielCompanies.com](http://DanielCompanies.com)

## Executive Summary for Sale

Price:	\$1,049,000
Address:	1025 Airport Rd and 1910 Lovett Ave - Bismarck, ND
Legal Description:	Gussner Indust Tract 1st BLK:1 Lot 22 & 23
Parcel ID:	0610-001-110 & 0610-001-105
Lot Size:	21,000 sf X 2 = 42,000 sf
Building Size:	7,050 sf Main Floor (2,679 sf Office, 4,371 sf Warehouse) + 1,022 sf Finished Mezzanine Office + 1,657 sf Unfinished Mezzanine Storage = Total 9,729 sf
Year Built:	1976
Zoning:	MA Light Industrial
Taxes 2018:	\$6,155.33
Specials:	None!

Broker does not guarantee the information describing this property. Interested parties are advised to independently verify the information through personal inspectors or with appropriate professionals.



## Potential Uses

- ◆ Construction Company
- ◆ Building Supply Center
- ◆ Distribution Center
- ◆ Automotive Sales & Service
- ◆ Recreational
- ◆ Fitness Center
- ◆ Sports Facility
- ◆ Manufacturing
- ◆ Warehouse / Storage
- ◆ Engineering Firm
- ◆ Oil / Energy Companies
- ◆ Wholesale
- ◆ Fabrication





## Property Highlights

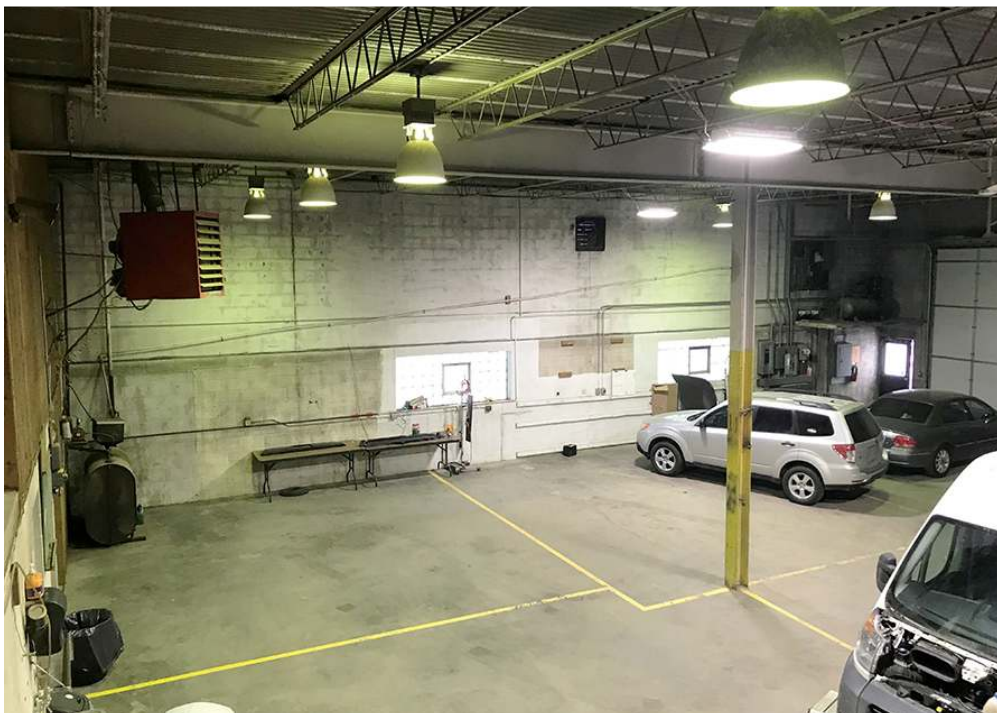
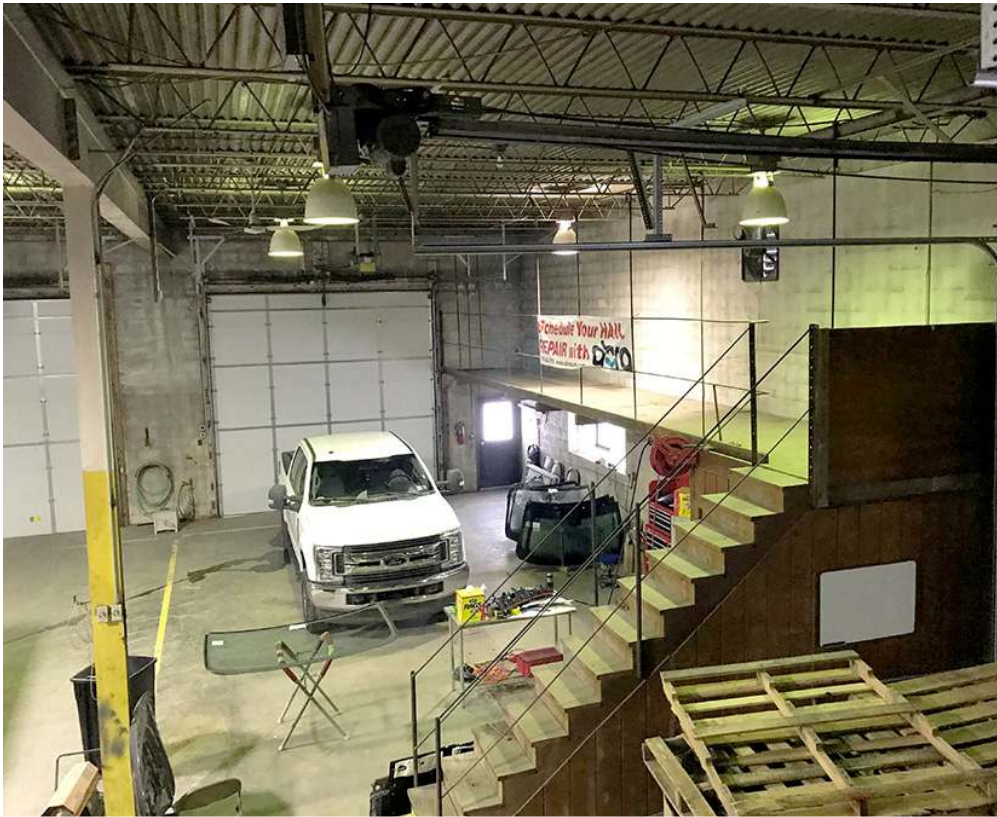
- High traffic and great visibility on Airport Rd.
- Large office area plus mezzanine office
- Shop area with 18' sidewalls & restroom
- Large corner lot with ample room for parking or product storage
- Easy truck access to I-94
- (4) 14' x 14' Overhead doors
- Concrete block building
- Reznor space heater in shop / warehouse area and natural gas f/a heat, AC in office.

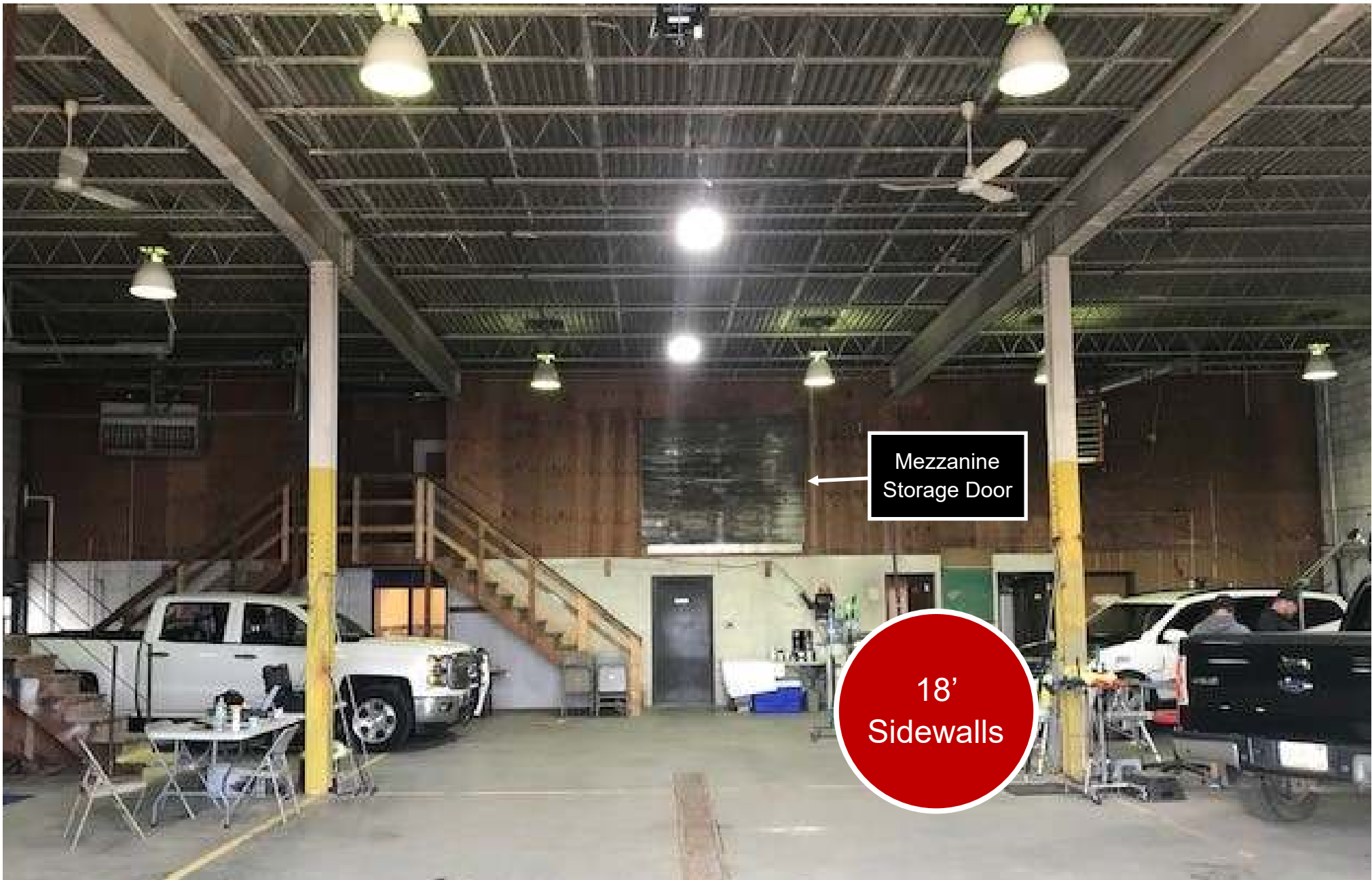




**Mezzanine Office Area**







Mezzanine  
Storage Door

18'  
Sidewalls

**ABRA**  
AUTO BODY & GLASS



**Lovett Ave**

300'

100'

76' 6"

**Front Door  
Parking**

**Frontage Rd**

105'



DAKOTA FIRE STATION, INC. LABOR FINDERS  
 BISMARCK HEATING & AIR ProTune Plus JOHN DEERE

MONTANA-DAKOTA UTILITIES CO. girl scouts  
 SPS SUPERVALU  
 DAKOTA BUMPER AND BODY SUPPLY

**Bismarck Expy**

**21,885 VPD**



ABRA  
 AUTO BODY & GLASS



**Lovett Ave**

PLASTICS plus Associated Pool Builders, Inc.  
 SPARLING Targetzen TAXI BOOTH  
 ABRA DAKOTA TACKLE FULL THROTTLE

FedEx Dvorak MOTORS Sara Lee  
 Superior Silk Screen DUANE'S  
 Body & Frame Shop Inc. Fireside Office Solutions

**Lee Ave**

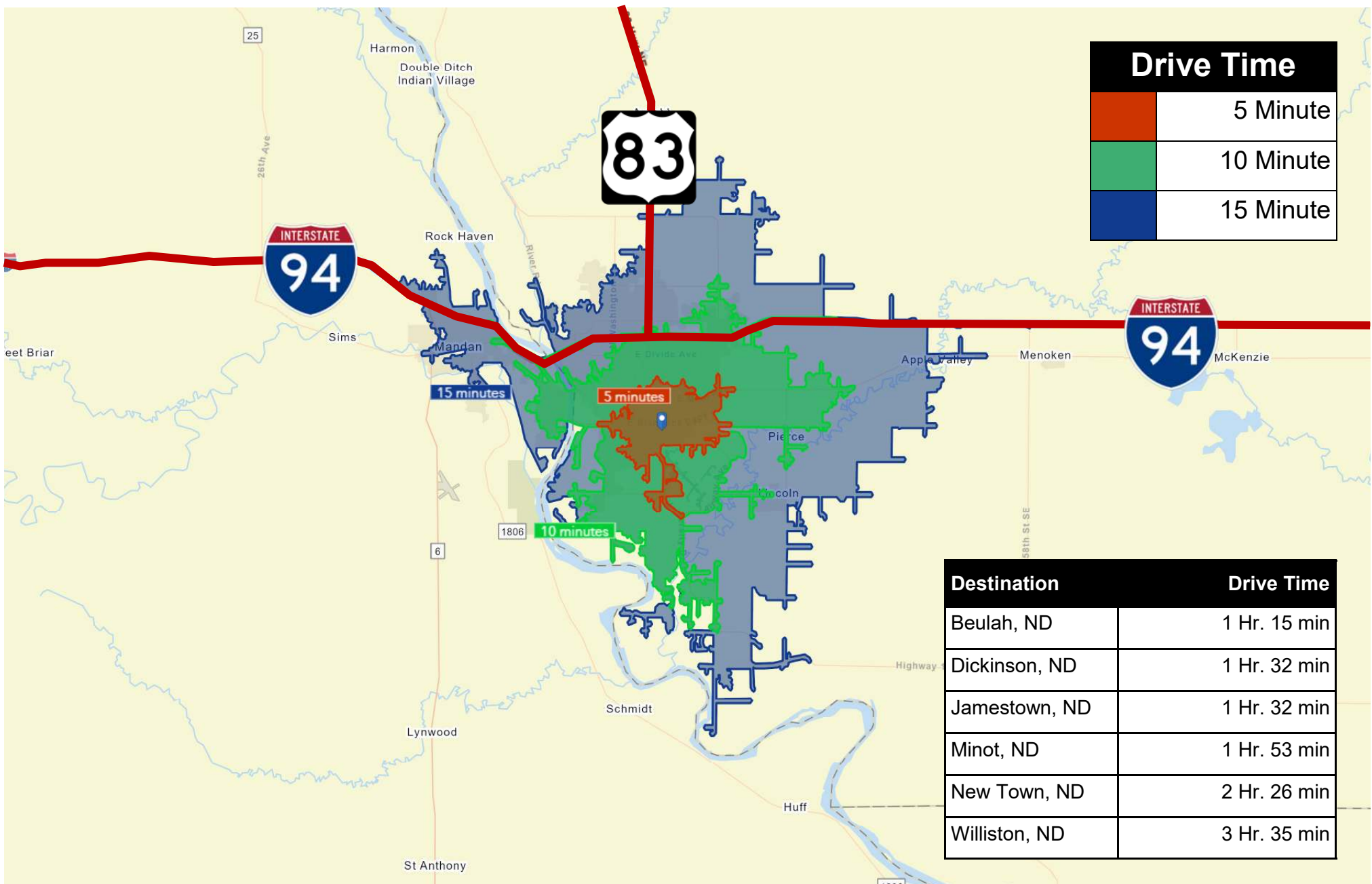
**Airport Rd**

**DANIEL COMPANIES**  
 The Leader in Commercial Real Estate

Taylor Daniel | Vice President  
 Commercial Realtor®  
[Taylor@DanielCompanies.com](mailto:Taylor@DanielCompanies.com)

Bill Daniel | President  
 CCIM, Broker  
[Bill@DanielCompanies.com](mailto:Bill@DanielCompanies.com)

[DanielCompanies.com](http://DanielCompanies.com)



Drive Time	
<span style="display:inline-block; width:20px; height:20px; background-color:orange;"></span>	5 Minute
<span style="display:inline-block; width:20px; height:20px; background-color:green;"></span>	10 Minute
<span style="display:inline-block; width:20px; height:20px; background-color:blue;"></span>	15 Minute

Destination	Drive Time
Beulah, ND	1 Hr. 15 min
Dickinson, ND	1 Hr. 32 min
Jamestown, ND	1 Hr. 32 min
Minot, ND	1 Hr. 53 min
New Town, ND	2 Hr. 26 min
Williston, ND	3 Hr. 35 min



**DANIEL COMPANIES**  
The Leader in Commercial Real Estate

**Taylor Daniel | Vice President**  
Commercial Realtor®  
[Taylor@DanielCompanies.com](mailto:Taylor@DanielCompanies.com)

**Bill Daniel | President**  
CCIM, Broker  
[Bill@DanielCompanies.com](mailto:Bill@DanielCompanies.com)

[DanielCompanies.com](http://DanielCompanies.com)

## Bismarck—Mandan, ND

Bismarck-Mandan, the capital city of North Dakota with a MSA that surpasses 125,000 is a vibrant metro area with jobs, retail, and residential growth to prove it. In Livability.com's Best Places to Live 2016, Bismarck not only ranked in the top 100 - it was rated #7 out of 2,100 cities. We have made Forbes list of "Best Small Places for Business and Careers", Milken Institute's "Best Small Cities, as well as CNN Money's list of top 100 places to live.

Bismarck-Mandan is economically diverse, fast growing and dynamic. Centrally located in North America and just south of North Dakota's "Energy Corridor," this area is in the midst of robust economic growth, giving residents amazing opportunity's, with new business prospects emerging daily.

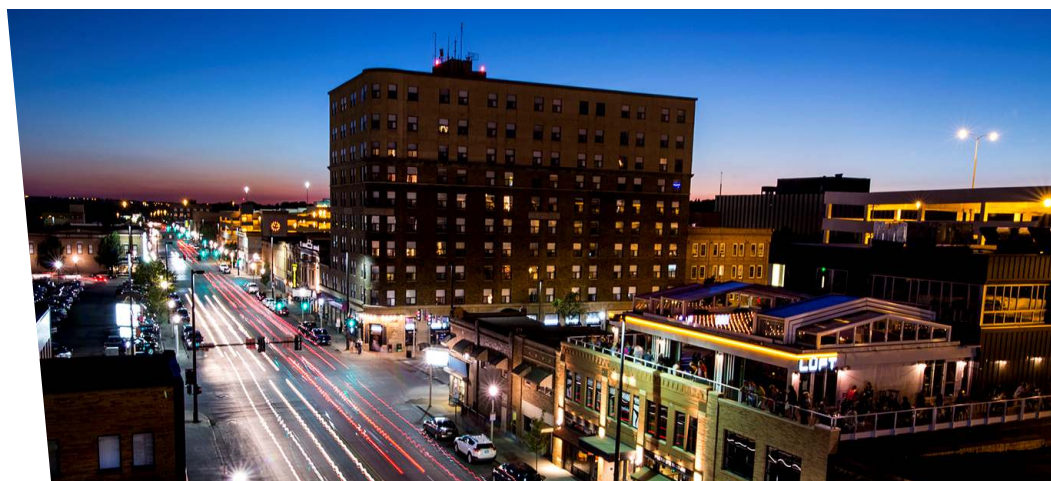
With innovation and inspiration embedded into the soil, the residents of Bismarck-Mandan work with those same ideals. We support a vibrant energy industry, two major medical facilities, a host of technical service companies and many other innovative businesses both large and small.

Bismarck-Mandan offers unlimited opportunities to participate in outdoor activities, a variety of professional sporting events and cultural events. Whether you prefer music, dancing, hunting, hiking, theater, art, or bull riding, Bismarck-Mandan has it all.

Business climate is thriving in Bismarck—Mandan. Wallet hub ranks North Dakota in the Top 10 states to start a business. The state consistently ranks at the top for economic growth:

- #1 Highest in Growth in Small Businesses
- #1 in Industry Variety
- #1 Most Accessible Financing
- #1 Startups per Capita

The community was named in the Top 30 safest cities in America by WalletHub in 2017. Year after year Bismarck has been named a Playful City USA by the KaBBOM! Playful City USA program. With modest home prices, affordable property taxes, high-performing schools, manicured parks and active recreation, Bismarck-Mandan is a great place to put down your roots.





# DANIEL COMPANIES

The Leader in Commercial Real Estate



**Bill Daniel, CCIM | President  
Commercial Broker**

701.220.2455

[Bill@DanielCompanies.com](mailto:Bill@DanielCompanies.com)



**Taylor Daniel | Vice President  
Commercial Realtor®**

701.391.4262

[Taylor@DanielCompanies.com](mailto:Taylor@DanielCompanies.com)

Serving commercial real estate clients with unmatched market knowledge, experience and a well-deserved reputation for integrity. They know the Bismarck-Mandan commercial real estate market better than anyone.

**Powerful Team. Powerful Process. Powerful Results.**