

# Grand Pacific Center

400 E Broadway Ave Suite 101 - Bismarck, ND

2,602 sf @ \$18.00 psf



**Taylor Daniel | Vice President**  
Commercial Realtor®  
[Taylor@DanielCompanies.com](mailto:Taylor@DanielCompanies.com)

**Bill Daniel | President**  
CCIM, Broker  
[Bill@DanielCompanies.com](mailto:Bill@DanielCompanies.com)

[DanielCompanies.com](http://DanielCompanies.com)

# Executive Summary for Lease

<b>Address:</b>	400 E Broadway Ave Suite 101 - Bismarck, ND
<b>Property Name:</b>	Grand Pacific Center
<b>Date Available:</b>	January 1st, 2021
<b>Lease Term:</b>	Minimum 3 Years
<b>Lease Rate:</b>	\$18.00 psf / \$3,903 mo.
<b>Approximate SF:</b>	2,602 sf
<b>Parking:</b>	Street and ramp parking
<b>Tenant Responsibilities:</b>	Parking, Internet, and Phone

Broker does not guarantee the information describing this property. Interested parties are advised to independently verify the information through personal inspectors or with appropriate professionals.



**400 E Broadway Ave.** has a Walk Score of 89 out of 100. Very Walkable - Most errands can be accomplished on foot.

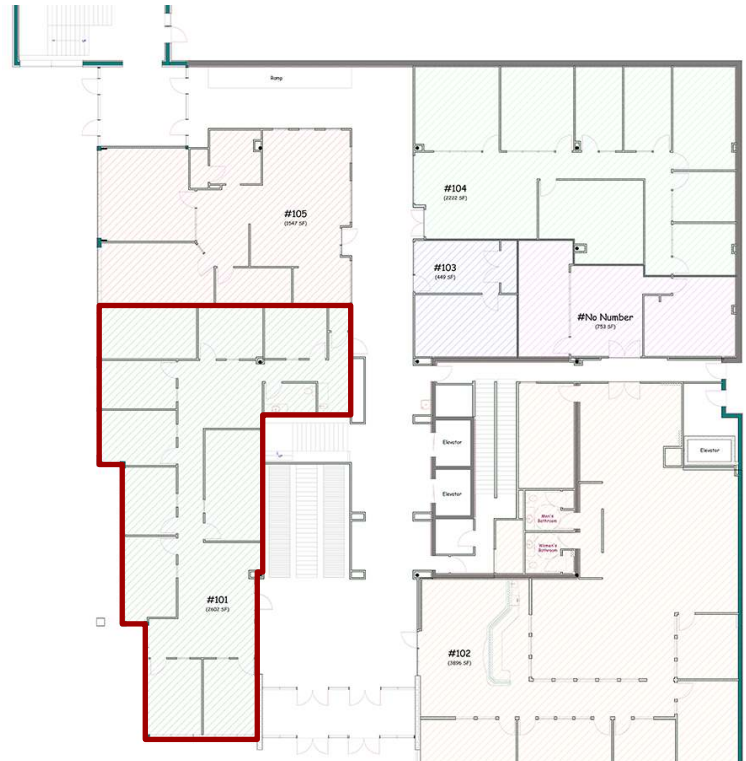
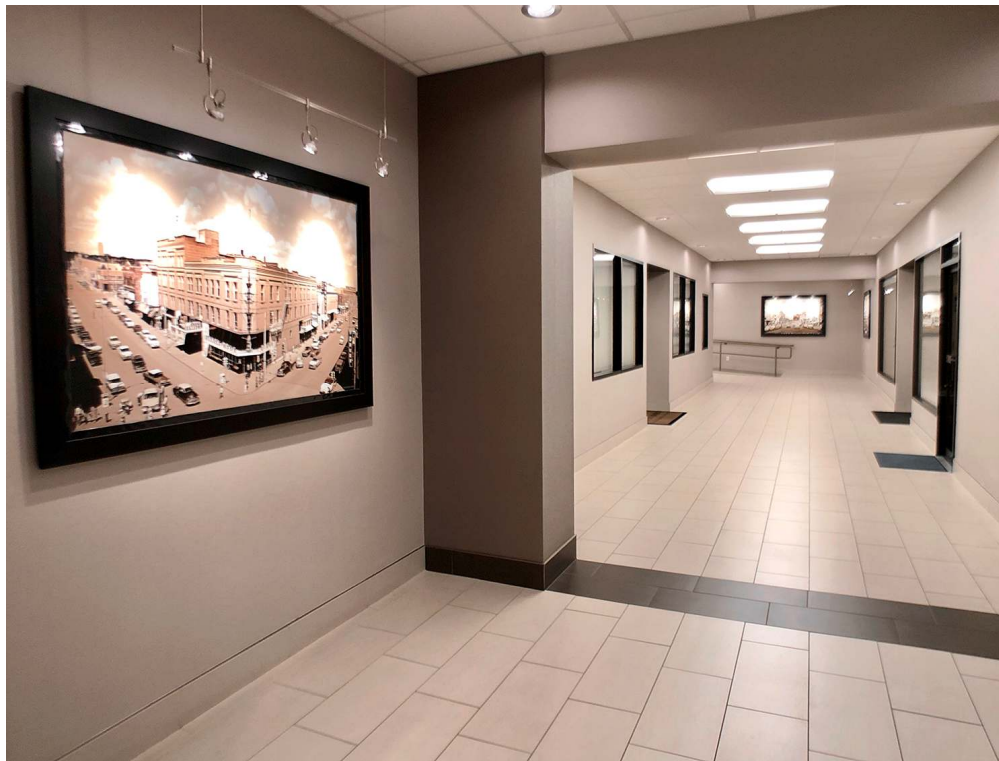
	.5 MILES	1 MILES	3 MILES
<b>2020 POPULATION</b>			
	2,573	13,734	64,107
<b>DAYTIME POPULATION</b>			
	13,222	26,792	77,342
<b>BUSINESSES</b>			
	794	1,432	3,916
<b>EMPLOYEES</b>			
	11,760	23,668	57,794
<b>HOUSEHOLD INCOME</b>			
	\$46,613	\$63,097	\$80,473



**Taylor Daniel | Vice President**  
Commercial Realtor®  
[Taylor@DanielCompanies.com](mailto:Taylor@DanielCompanies.com)

**Bill Daniel | President**  
CCIM, Broker  
[Bill@DanielCompanies.com](mailto:Bill@DanielCompanies.com)

**DanielCompanies.com**





# Join Exciting Downtown Bismarck!





# DANIEL COMPANIES

The Leader in Commercial Real Estate



**Bill Daniel, CCIM | President  
Commercial Broker**

701.220.2455

Bill@DanielCompanies.com



**Taylor Daniel | Vice President  
Commercial Realtor®**

701.391.4262

Taylor@DanielCompanies.com

Serving commercial real estate clients with unmatched market knowledge, experience and a well-deserved reputation for integrity.  
They know the Bismarck-Mandan commercial real estate market better than anyone.

**Powerful Team. Powerful Process. Powerful Results.**