

# Grand Pacific Center

## All Available Spaces

400 E. Broadway Ave.  
Bismarck, ND



**Taylor Daniel | Vice President**  
Commercial Realtor®  
[Taylor@DanielCompanies.com](mailto:Taylor@DanielCompanies.com)

**Bill Daniel | President**  
CCIM, Broker  
[Bill@DanielCompanies.com](mailto:Bill@DanielCompanies.com)

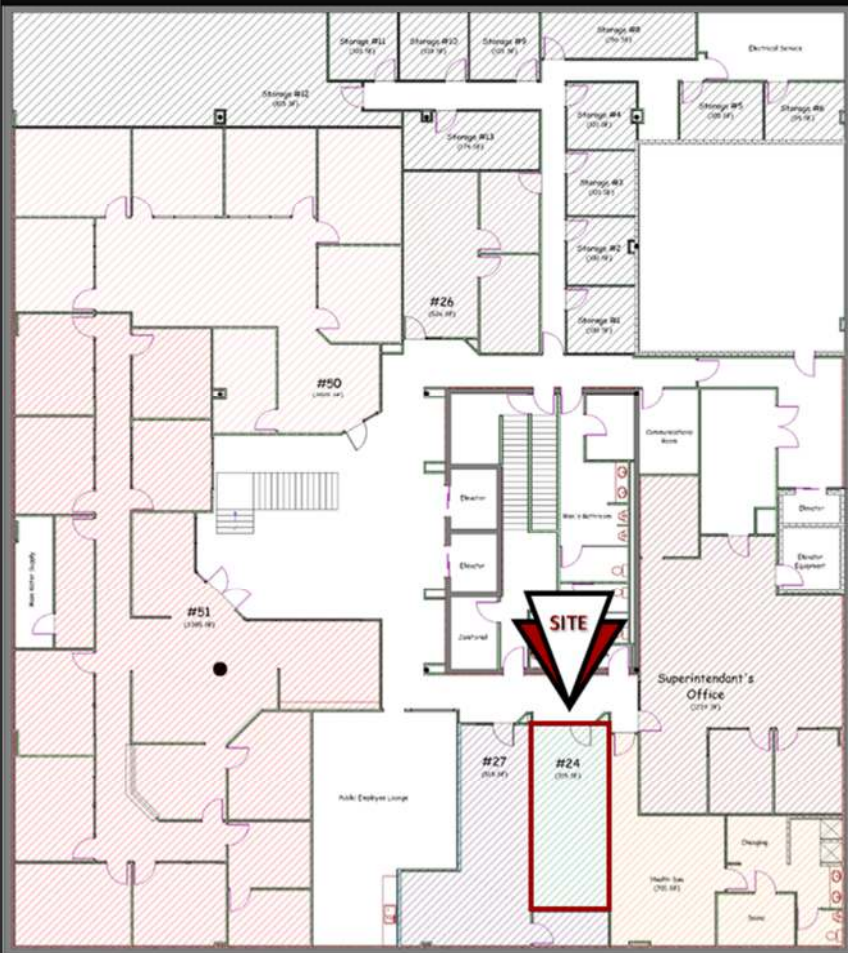
**[DanielCompanies.com](http://DanielCompanies.com)**



# Executive Summary for Lease

<b>Address:</b>	400 E Broadway Ave Suite 24 - Bismarck, ND
<b>Property Name:</b>	Grand Pacific Center - Lower Level
<b>Lease Term:</b>	Minimum 3 Years
<b>Lease Rate:</b>	\$13.00 psf / \$372.00 mo.
<b>Approximate SF:</b>	343 sf
<b>Parking:</b>	Street and city ramp parking
<b>Tenant Responsibilities:</b>	Parking, Internet, and Phone

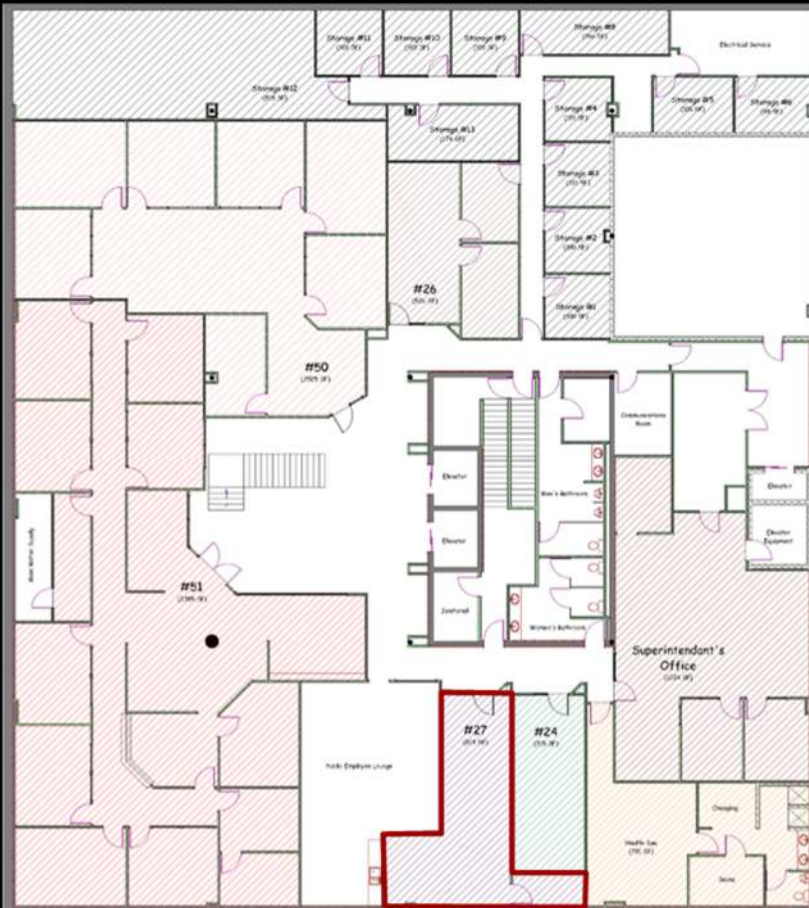
Broker does not guarantee the information describing this property. Interested parties are advised to independently verify the information through personal inspectors or with appropriate professionals.



# Executive Summary for Lease

<b>Address:</b>	400 E Broadway Ave Suite 27 - Bismarck, ND
<b>Property Name:</b>	Grand Pacific Center
<b>Date Available:</b>	Now
<b>Lease Term:</b>	Minimum 3 Years
<b>Lease Rate:</b>	\$13.00 psf / \$394 mo.
<b>Approximate SF:</b>	363 sf
<b>Parking:</b>	Street and city ramp parking
<b>Tenant Responsibilities:</b>	Parking, Internet, and Phone

Broker does not guarantee the information describing this property. Interested parties are advised to independently verify the information through personal inspectors or with appropriate professionals.





## Office Specifics

**\$14.00 psf - Full Service**

- 2,025 sf / \$2,362.50 mo.
- 6 Offices
- Conference Room
- Kitchen / Break Room
- Lobby

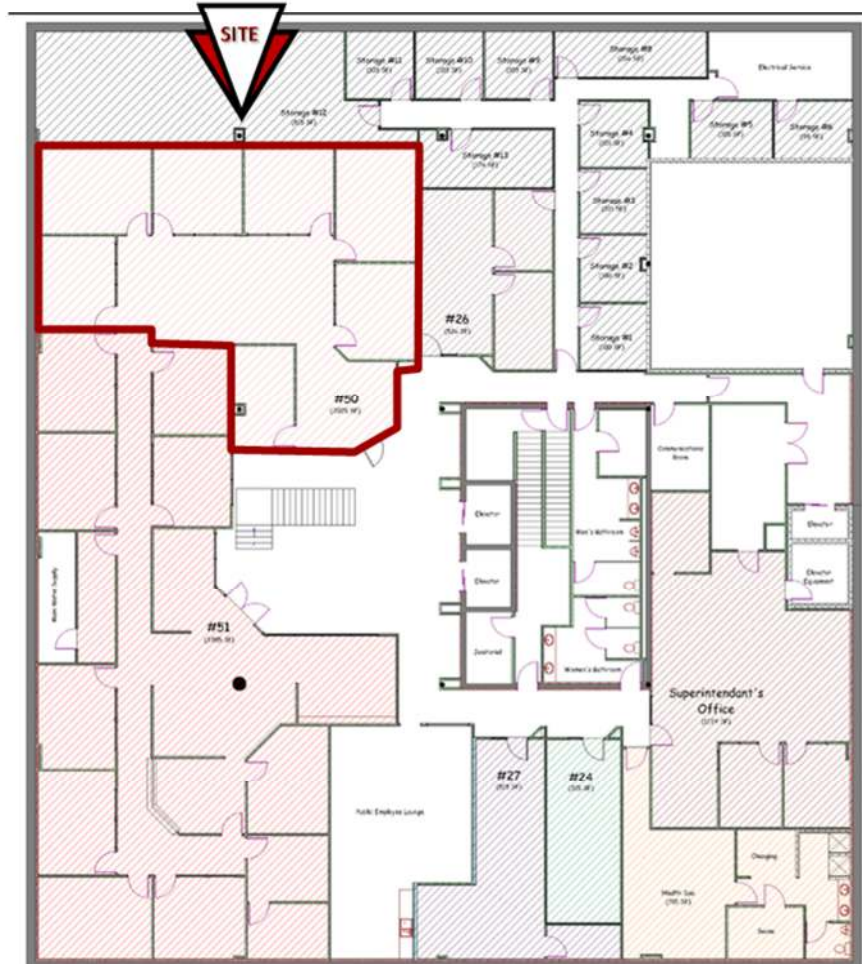
## Property Highlights

- 3% Annual Increase
- Two Elevators
- Building Conference Room and Break Room
- Great Location and view corner of N 4th St and Broadway Ave
- Downtown Landmark Building Newly Renovated Exterior & Interior Lobby
- Walkable to Downtown, restaurants, shops, gyms, banks, and Courthouse

## Executive Summary for Lease

<b>Address:</b>	400 E Broadway Ave Suite 51-A - Bismarck, ND
<b>Property Name:</b>	Grand Pacific Center - Lower Level
<b>Lease Term:</b>	Minimum 3 Years
<b>Lease Rate:</b>	\$14.00 psf / \$2,362.50 mo.
<b>Approximate SF:</b>	2,025 sf
<b>Parking:</b>	Street and city ramp parking
<b>Tenant Responsibilities:</b>	Parking, Internet, and Phone

Broker does not guarantee the information describing this property. Interested parties are advised to independently verify the information through personal inspectors or with appropriate professionals.







**Suite  
51-A**

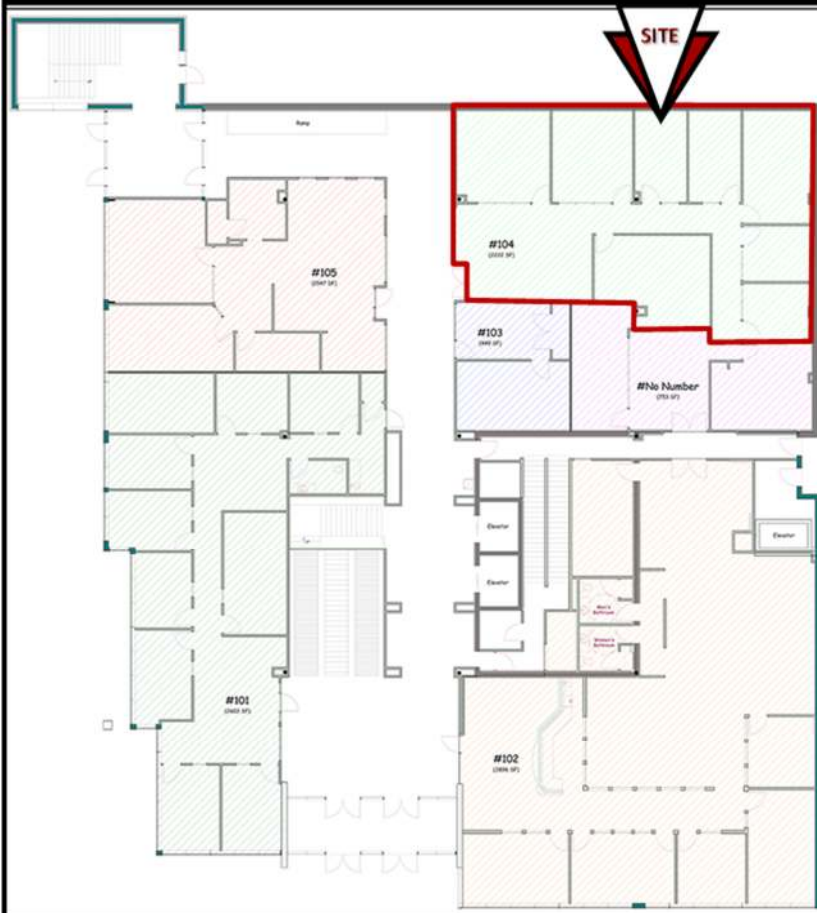




## Executive Summary for Lease

<b>Address:</b>	400 E Broadway Ave Suite 104 - Bismarck, ND
<b>Property Name:</b>	Grand Pacific Center
<b>Date Available:</b>	Now
<b>Lease Term:</b>	Minimum 3 Years
<b>Lease Rate:</b>	\$15.50 psf / \$2,870 mo.
<b>Approximate SF:</b>	2,222 sf
<b>Parking:</b>	Street and city ramp parking
<b>Tenant Responsibilities:</b>	Parking, Internet, and Phone

Broker does not guarantee the information describing this property. Interested parties are advised to independently verify the information through personal inspectors or with appropriate professionals.







**Suite  
104**

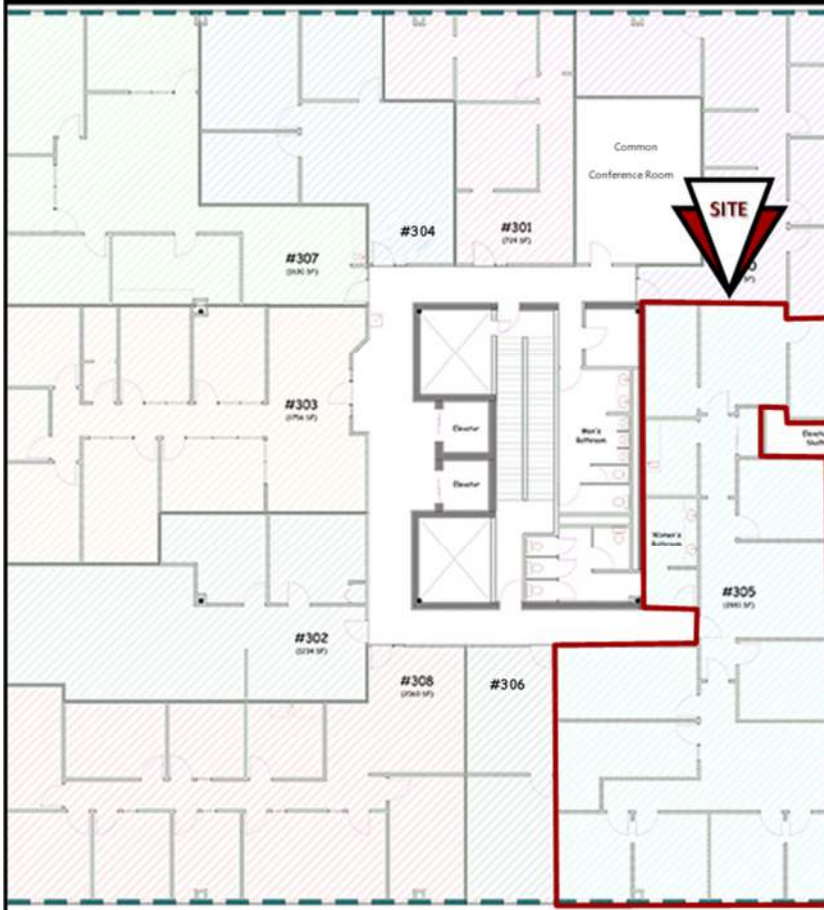




## Executive Summary for Lease

<b>Address:</b>	400 E Broadway Ave Suite 305 - Bismarck, ND
<b>Property Name:</b>	Grand Pacific Center
<b>Lease Term:</b>	Minimum 3 Years
<b>Lease Rate:</b>	\$15.50 psf / \$3,721 mo.
<b>Approximate SF:</b>	2,881 sf
<b>Parking:</b>	Street and city ramp parking
<b>Tenant Responsibilities:</b>	Parking, Internet, and Phone

Broker does not guarantee the information describing this property. Interested parties are advised to independently verify the information through personal inspectors or with appropriate professionals.







**Lower Level Common Break Room**



**3rd Floor Common Conference Room**













# DANIEL COMPANIES

The Leader in Commercial Real Estate



**Bill Daniel, CCIM | President  
Commercial Broker**

701.220.2455

Bill@DanielCompanies.com



**Taylor Daniel | Vice President  
Commercial Realtor®**

701.391.4262

Taylor@DanielCompanies.com

Serving commercial real estate clients with unmatched market knowledge, experience and a well-deserved reputation for integrity.  
They know the Bismarck-Mandan commercial real estate market better than anyone.

**Powerful Team. Powerful Process. Powerful Results.**