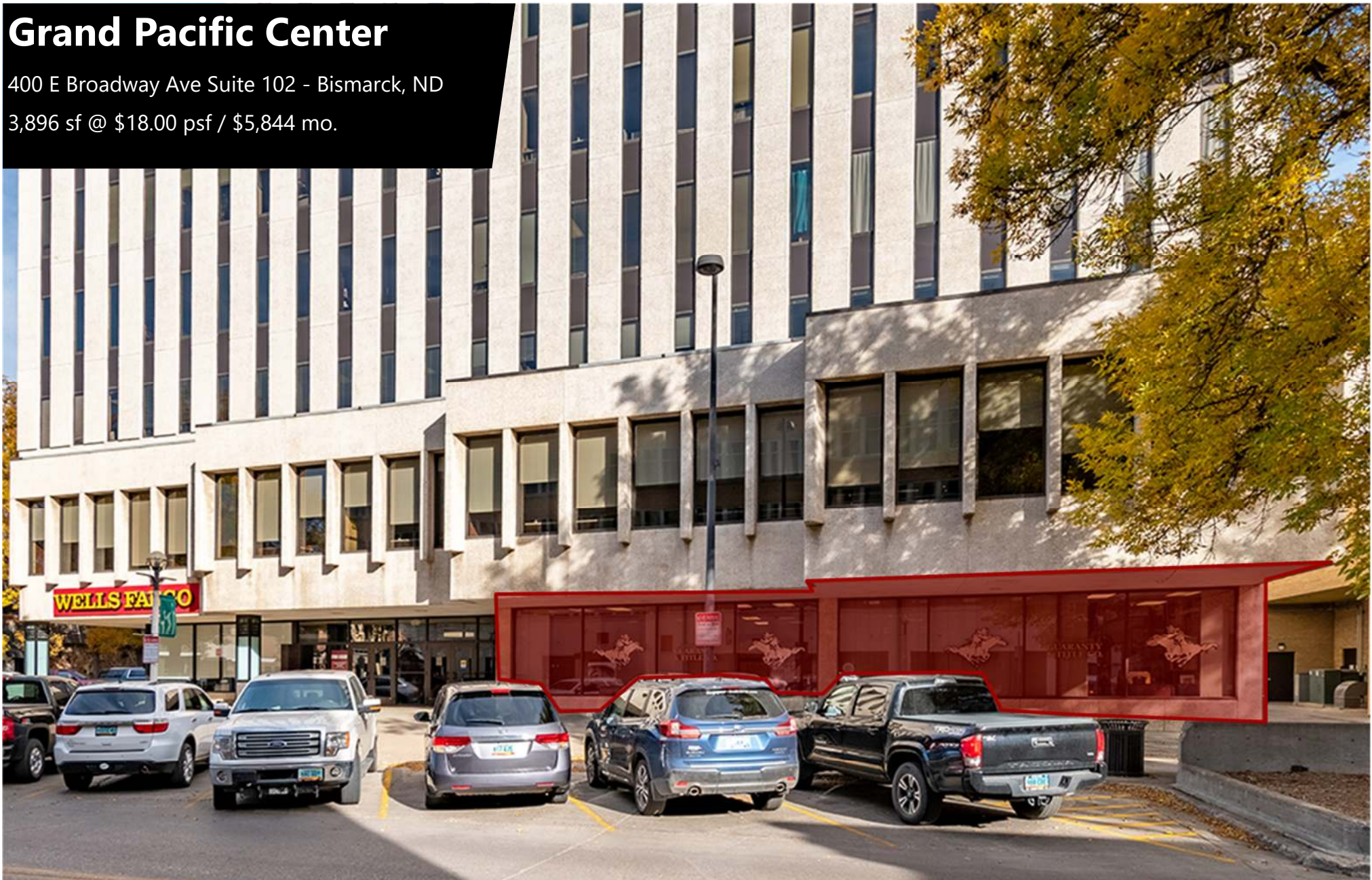


Grand Pacific Center

400 E Broadway Ave Suite 102 - Bismarck, ND

3,896 sf @ \$18.00 psf / \$5,844 mo.



Taylor Daniel | Vice President
Commercial Realtor®
Taylor@DanielCompanies.com

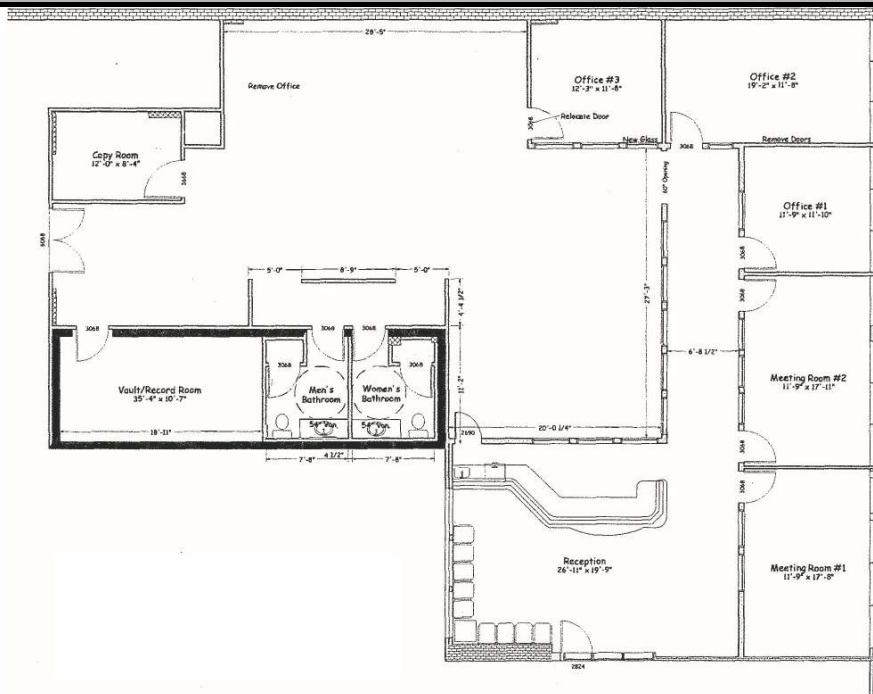
Bill Daniel | President
CCIM, Broker
Bill@DanielCompanies.com

DanielCompanies.com

Executive Summary for Lease

Address:	400 E Broadway Ave Suite 102 - Bismarck, ND
Property Name:	Grand Pacific Center
Date Available:	July / August, 2021
Lease Term:	Minimum 5 Year
Lease Rate:	\$18.00 psf / \$5,844 mo.
Approximate SF:	3,896 sf
Parking:	Street and ramp parking
Tenant Responsibilities:	Parking, Internet, and Phone

Broker does not guarantee the information describing this property. Interested parties are advised to independently verify the information through personal inspectors or with appropriate professionals.



400 E Broadway Ave. has a Walk Score of 89 out of 100. Very Walkable - Most errands can be accomplished on foot.

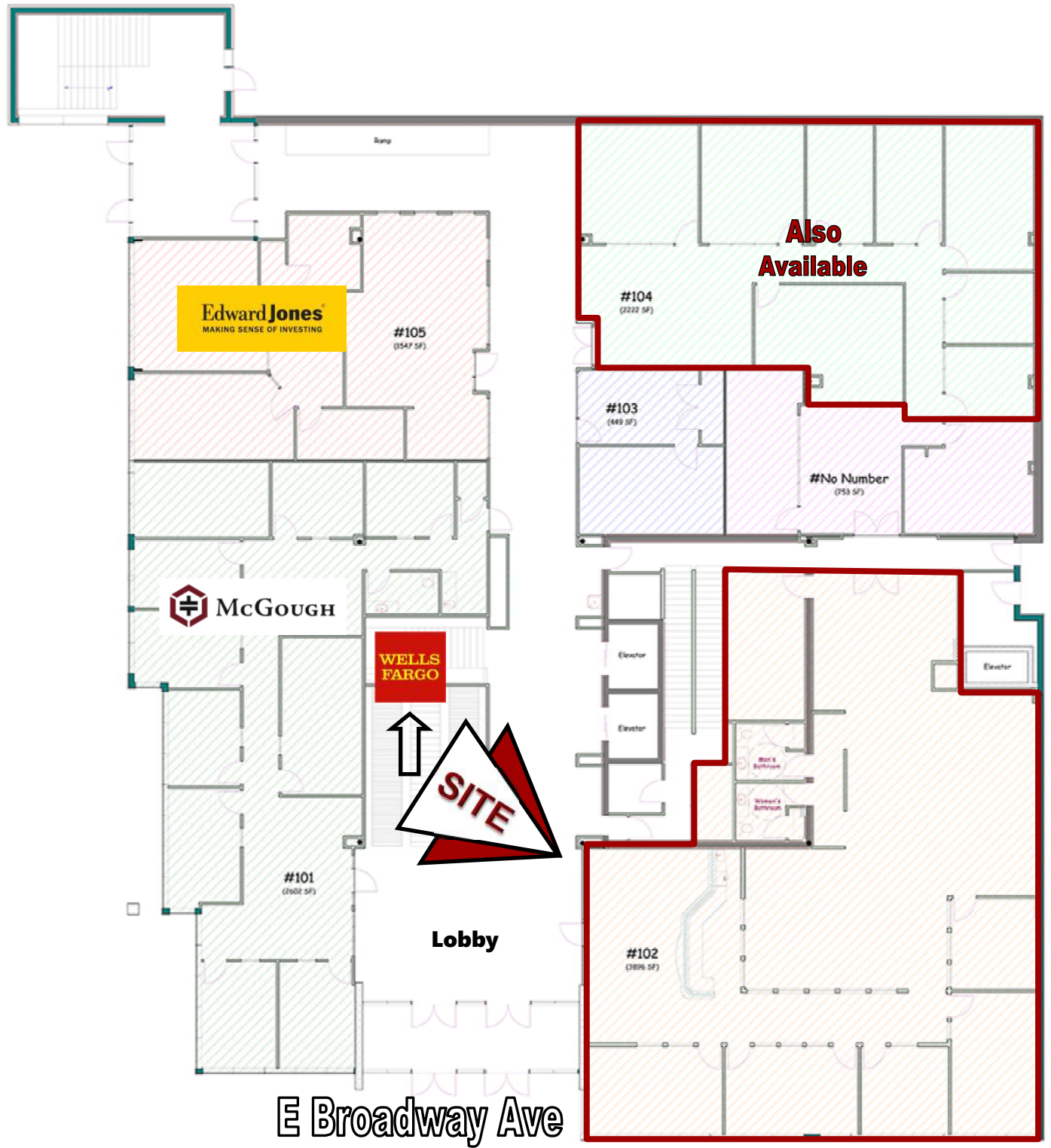
	.5 MILES	1 MILES	3 MILES
2020 POPULATION			
	2,573	13,734	64,107
DAYTIME POPULATION			
	13,222	26,792	77,342
BUSINESSES			
	794	1,432	3,916
EMPLOYEES			
	11,760	23,668	57,794
HOUSEHOLD INCOME			
	\$46,613	\$63,097	\$80,473

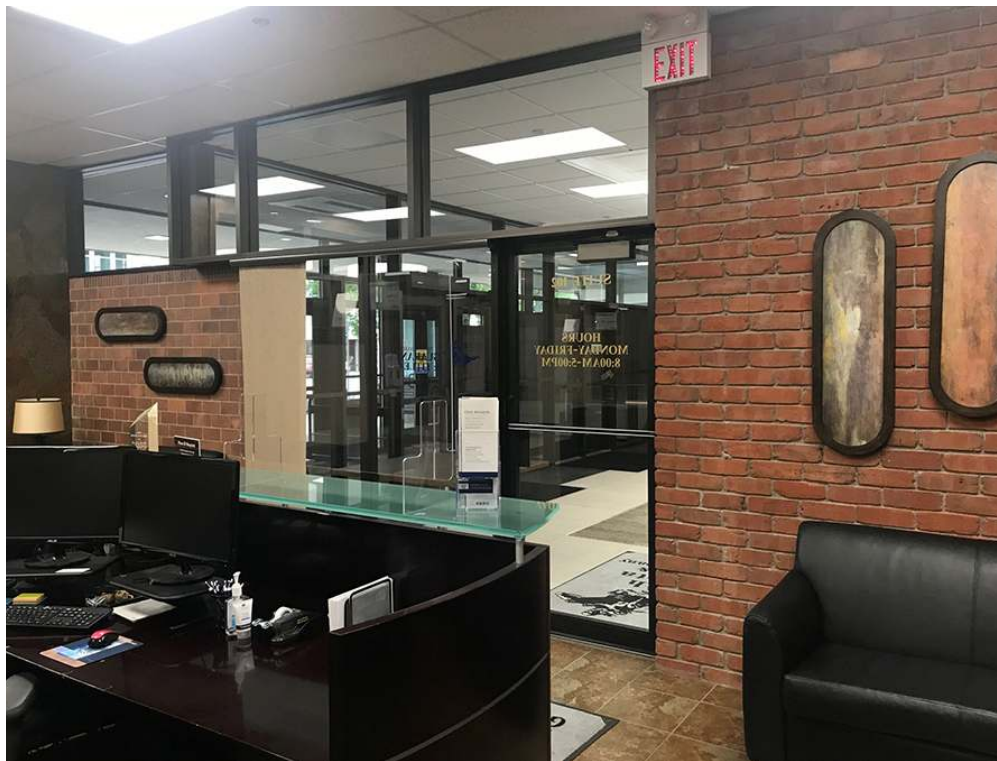


Taylor Daniel | Vice President
Commercial Realtor®
Taylor@DanielCompanies.com

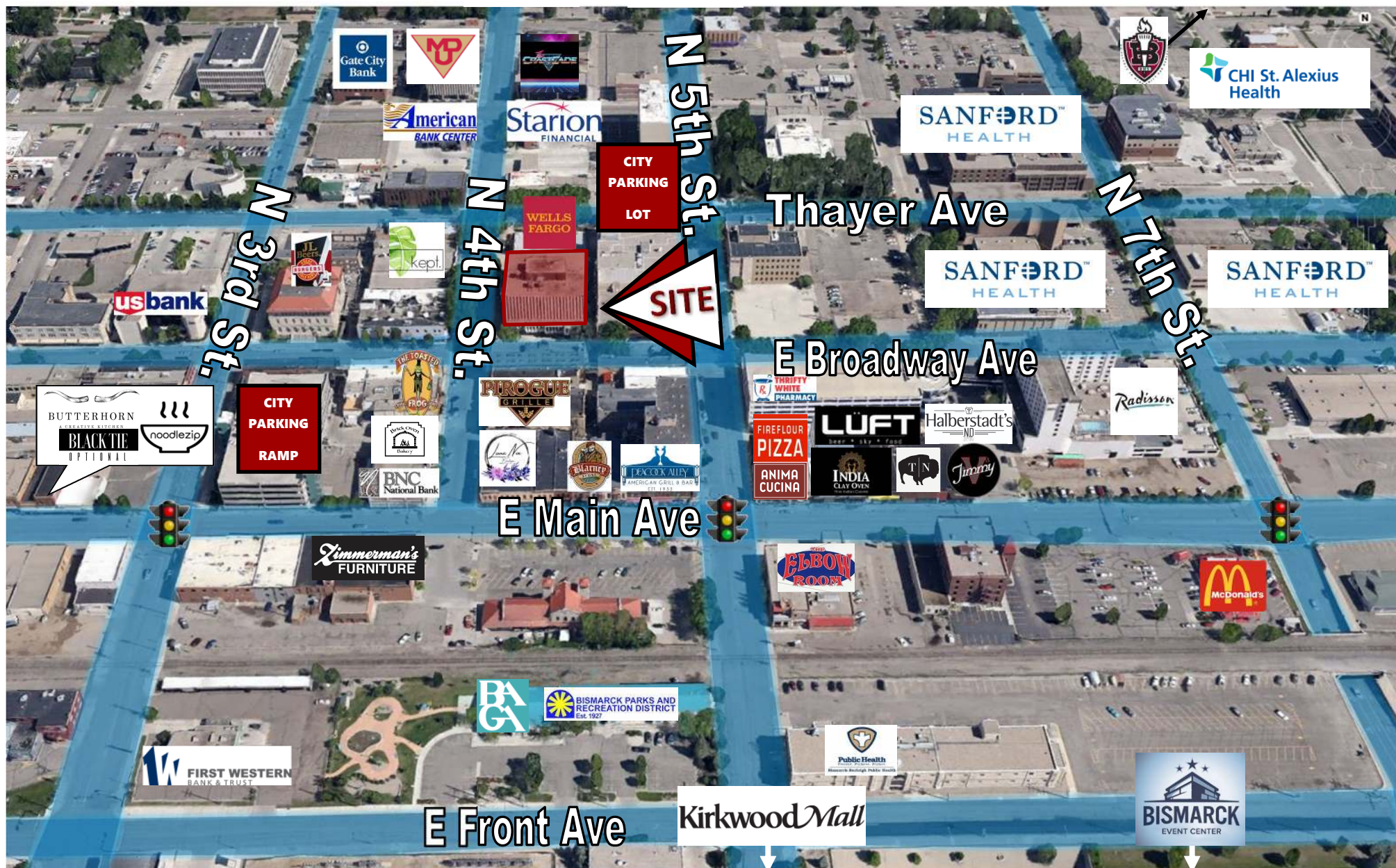
Bill Daniel | President
CCIM, Broker
Bill@DanielCompanies.com

DanielCompanies.com









Join Exciting Downtown Bismarck!





DANIEL COMPANIES

The Leader in Commercial Real Estate



**Bill Daniel, CCIM | President
Commercial Broker**

701.220.2455

Bill@DanielCompanies.com



**Taylor Daniel | Vice President
Commercial Realtor®**

701.391.4262

Taylor@DanielCompanies.com

Serving commercial real estate clients with unmatched market knowledge, experience and a well-deserved reputation for integrity.
They know the Bismarck-Mandan commercial real estate market better than anyone.

Powerful Team. Powerful Process. Powerful Results.