

Awesome Bank Location for Sublease

404 S 3rd Street - Bismarck, ND 58504

3,456 sf building / 15,000 sf @ \$24.00 psf NNN



Bill Daniel | President
CCIM, Broker
Bill@DanielCompanies.com

Taylor Daniel | Vice President
Commercial Realtor®
Taylor@DanielCompanies.com

DanielCompanies.com

Executive Summary for Sublease

Address:	404 S 3rd Street - Bismarck, ND
Date Available:	Now
Lease Rate:	\$24.00 psf NNN
Estimated CAM/NNN:	Tenant Responsiibilty
Lease Term:	5 Year Minimum
Approximate SF:	3,465 sf
Parking:	Front Door and On-Site
Tenant Responsibilities:	Base Rent, Utilities, Taxes, Specials, Insurance, Repairs, Snow Removal / Lawn care, and Maintenance

Broker does not guarantee the information describing this property. Interested parties are advised to independently verify the information through personal inspectors or with appropriate professionals.



DAYTIME POPULATION

1 MILES	3 MILES	5 MILES
22,152	77,356	102,698



AVERAGE HOUSEHOLD INCOME

1 MILES	3 MILES	5 MILES
\$68,083	\$85,143	\$91,640



2023 POPULATION

1 MILES	3 MILES	5 MILES
11,729	62,684	95,090



EMPLOYEES

1 MILES	3 MILES	5 MILES
17,214	49,489	60,031

- **High Traffic Location with EMC Sign**
- **Near Kirkwood Mall, Downtown, and Event Center!**
- **Easy Access, Great Parking and Visibility!**
- **Taxes 2023: \$12,606.77; Specials: \$77.53**
- **Drive UP Window - maybe able to add another lane**
- **Awesome opportunity for Bank, Medical, Financial, Law Firm or Association Headquarters**
- **Broker part owner**



Bill Daniel | President
 CCIM, Broker
Bill@DanielCompanies.com

Taylor Daniel | Vice President
 Commercial Realtor®
Taylor@DanielCompanies.com



Plains
Commerce
Bank

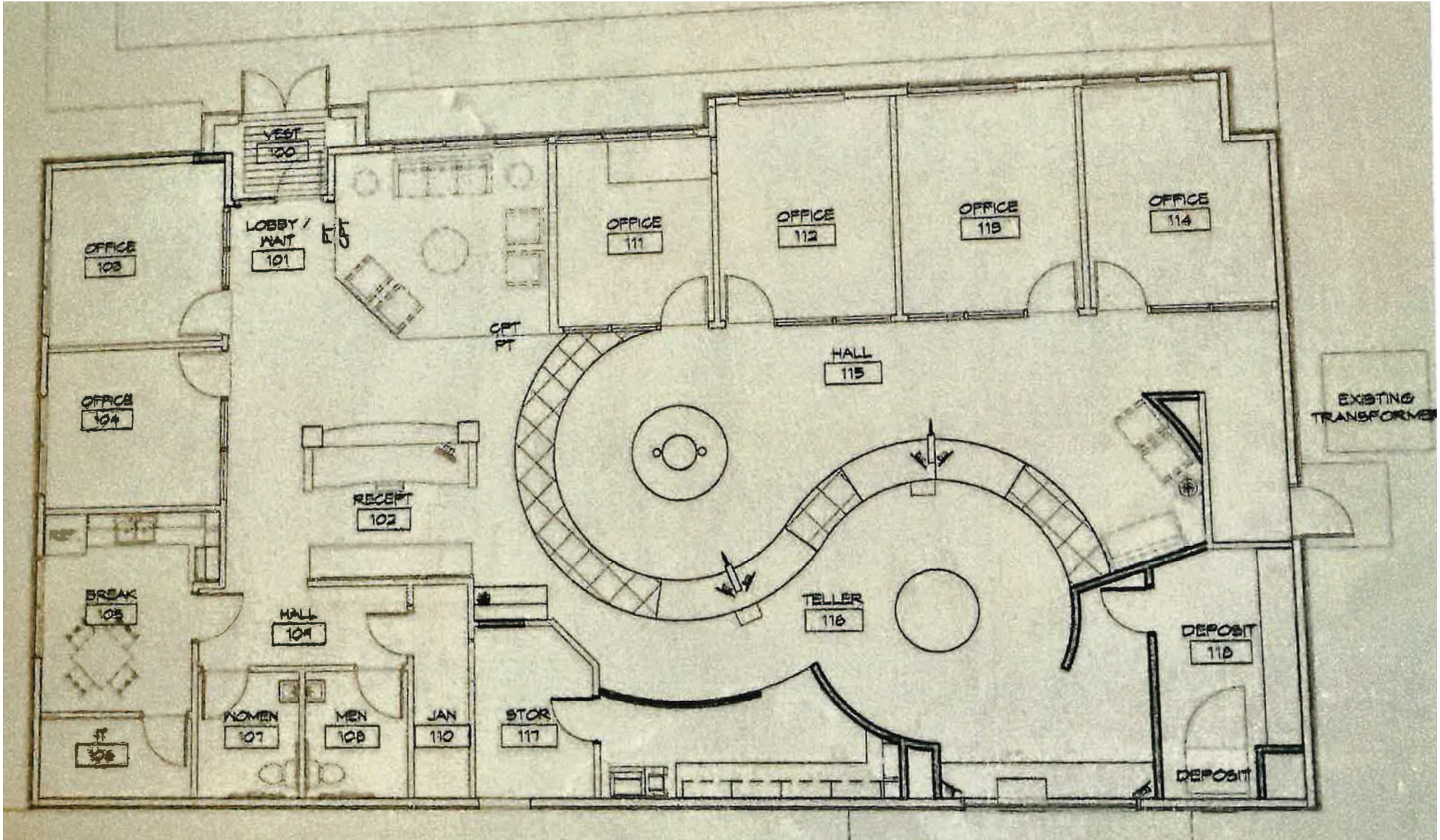
CLOSING SOON

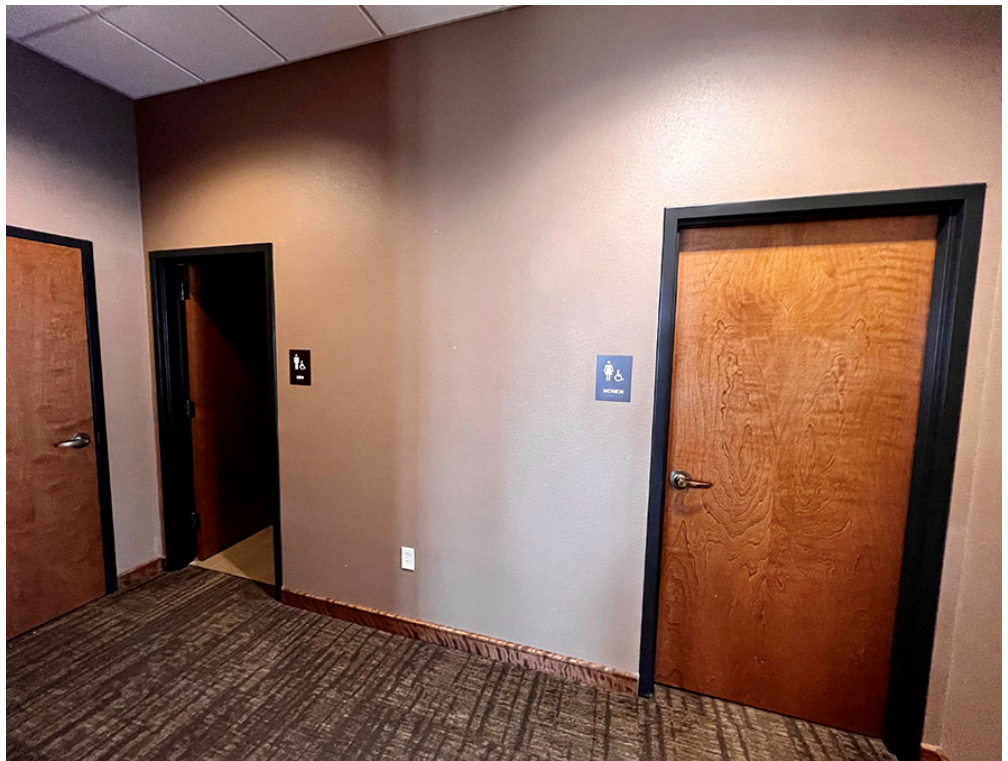




**Quality
Custom
Build Out**







← N

D
O
W
N
T
O
W
N

EXPRESSWAY CENTRE

SOUTHRIDGE CENTRE



FUTURE REDEVELOPMENT SITE

FOR LEASE



DANIEL COMPANIES

The Leader in Commercial Real Estate



**Bill Daniel, CCIM | President
Commercial Broker**

701.220.2455

Bill@DanielCompanies.com



**Taylor Daniel | Vice President
Commercial Realtor®**

701.391.4262

Taylor@DanielCompanies.com

Serving commercial real estate clients with unmatched market knowledge, experience and a well-deserved reputation for integrity. They know the Bismarck-Mandan commercial real estate market better than anyone.

Powerful Team. Powerful Process. Powerful Results.