

Cloverdale Industrial Park

2917 37th St NW

Mandan, ND

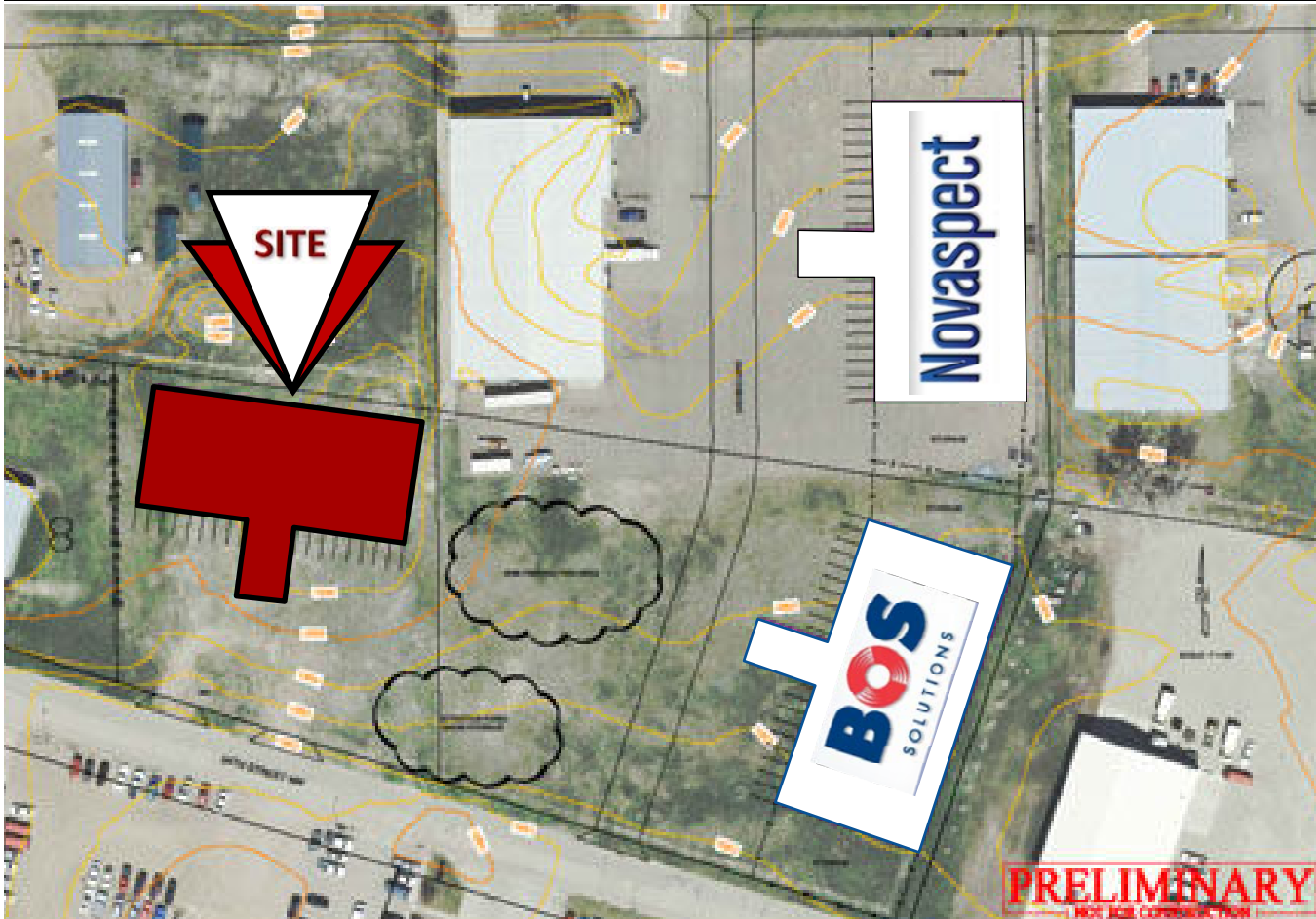


Kyle Holwagner, CCIM, SIOR
701.400.5373
Kyle@DanielCompanies.com

Kristyn Steckler, Senior Client Coordinator
701.527.0138
Kristyn@DanielCompanies.com

DanielCompanies.com

DESTINATION	MILES	DRIVE TIME
BEULAH, ND	72.81 Miles	1 Hour 16 Min.
DICKINSON, ND	93.58 Miles	1 Hour 23 Min.
MINOT, ND	117.10 Miles	1 Hour 59 Min.
NEW TOWN, ND	155.68 Miles	2 Hours 51 Min.
WILLISTON, ND	221.60 Miles	3 Hours 31 Min.



Build to Suit

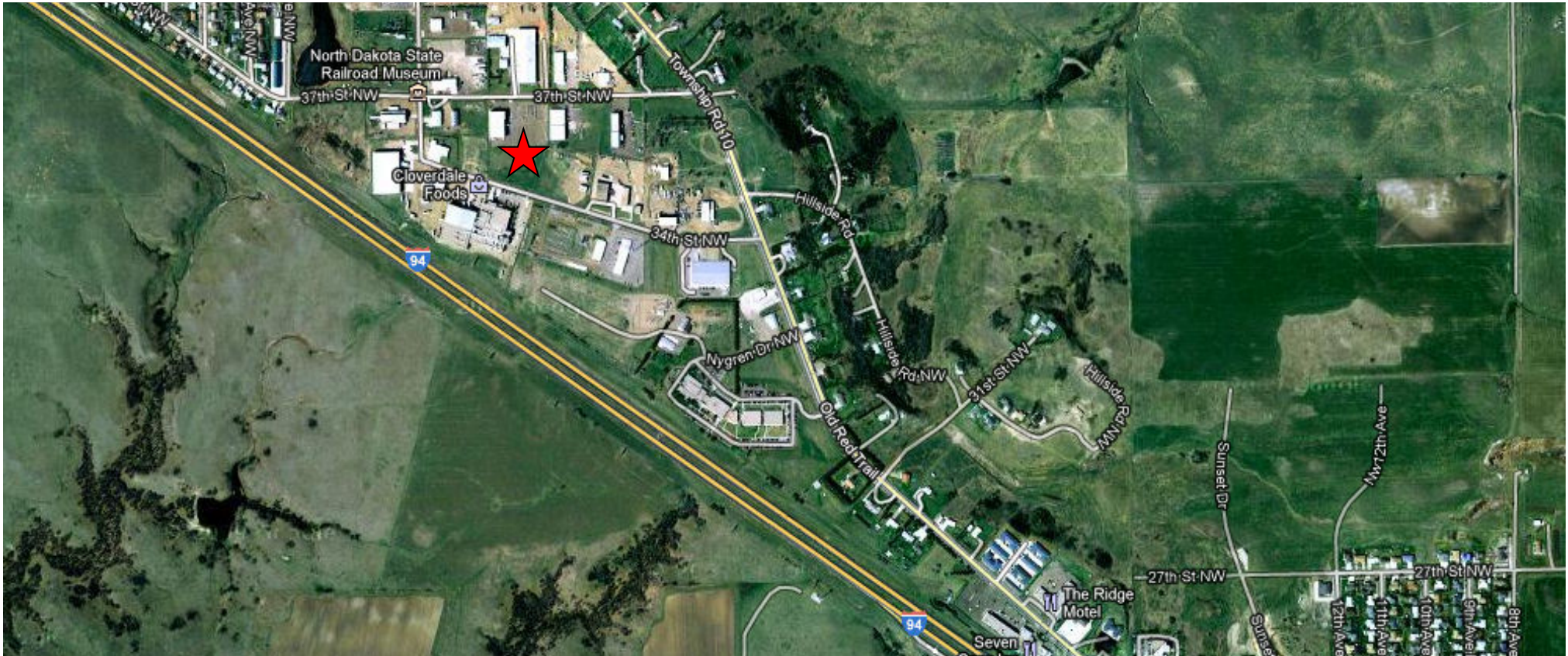
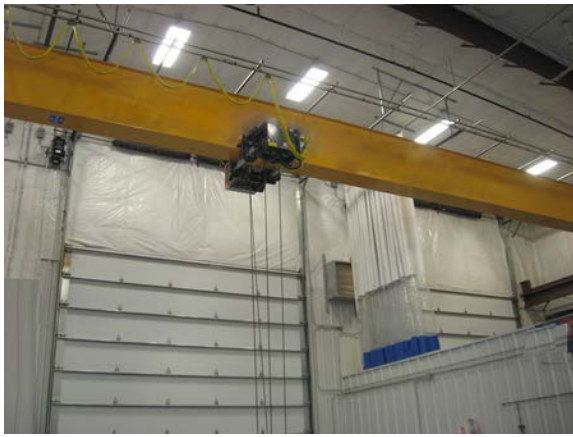
10,000 - 30,000 sf tenants

- 6-8 months construction based on permitting
- 20' sidewalls
- Loading Docks
- Yard Space
- Custom Office Layout
- Easy Truck Access
- Direct access to Old Red Trail and I-94 Interstate
- In City Limits, Zoned Industrial
- City Water
- Utilities: Natural Gas, 3 Phase Power, T1 Capable telephone, City Sanitary Sewer, City Street Lighting



Kyle Holwagner, CCIM, SIOR
701.400.5373
Kyle@DanielCompanies.com

Kristyn Steckler, Senior Client Coordinator
701.527.0138
Kristyn@DanielCompanies.com



Kyle Holwagner, CCIM, SIOR
701.400.5373
Kyle@DanielCompanies.com

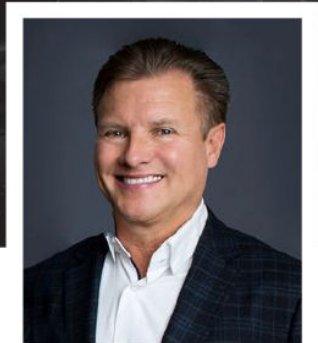
Kristyn Steckler, Senior Client Coordinator
701.527.0138
Kristyn@DanielCompanies.com

DanielCompanies.com



DANIEL COMPANIES

The Leader in Commercial Real Estate



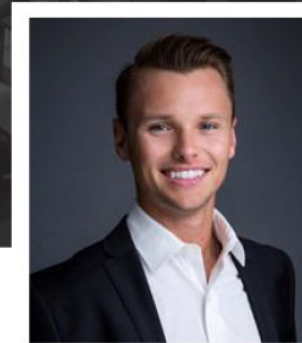
Bill Daniel
CCIM, Broker

701.220.2455
Bill@DanielCompanies.com



Kyle Holwagner
CCIM, SIOR

701.400.5373
Kyle@DanielCompanies.com



Taylor Daniel
Commercial REALTOR®

701.391.4262
Taylor@DanielCompanies.com

Serving commercial real estate clients with unmatched market knowledge, experience and a well-deserved reputation for integrity. They know the Bismarck-Mandan commercial real estate market better than anyone.

Powerful Team. Powerful Process. Powerful Results.